

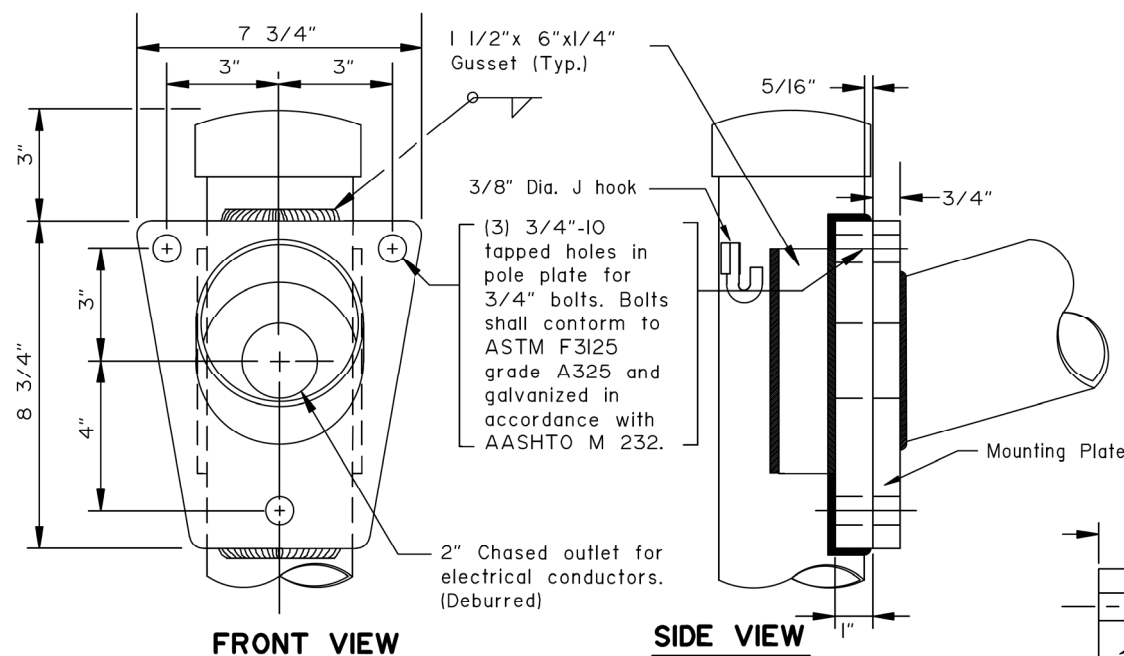
END OF MAST ARM DETAIL

GENERAL NOTES:

- Design and fabricate Lighting Standards according to AASHTO LTS-6-13, 2019 and 2020 Interim Revisions to (2013 Sixth Edition) Standard Specifications for Structural Supports for Highway Signs, Luminaires, and Traffic Signals. Fatigue and temporary loads are not to be considered.

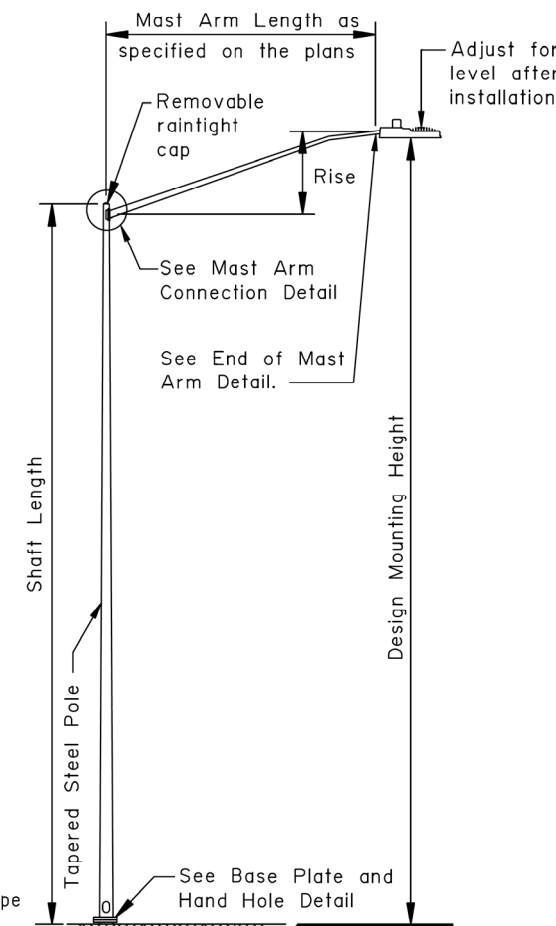
All shafts shall support the maximum arm lengths shown in the MAST ARM DATA table with luminaire. Assume each offset fixture weighs 30 lbs. and has an effective projected area of 1.5 SF. Assume each Cobra weighs 25 lbs. and has an effective projected area of 0.75 square feet. The electrolier total weight shall not exceed 992 lbs.

- Weld size to be determined by manufacturer.
- Mounting height, if specified in the plans, refers to the height of luminaire above the finished roadway surface. Adjust each pole's shaft length to maintain this difference in elevation whenever slope and/or offset varies.
- Minimum outside diameter at the top of pole equals 3-7/8". Pole diameter shall taper uniformly from the top of pole to the base plate, with a minimum taper rate of 0.14" per foot.
- Mast arm rise may vary ±0.5ft from the values listed in the table.
- Locate the handhole at 90 degrees to the mast arm on the side of pole downstream from traffic flow.
- Furnish all poles with a j-hook to support the illumination tap conductors. Furnish all mast arm poles with a removable raintight cap.
- See ASP L-30 for frangible coupling and skirt details and notes.

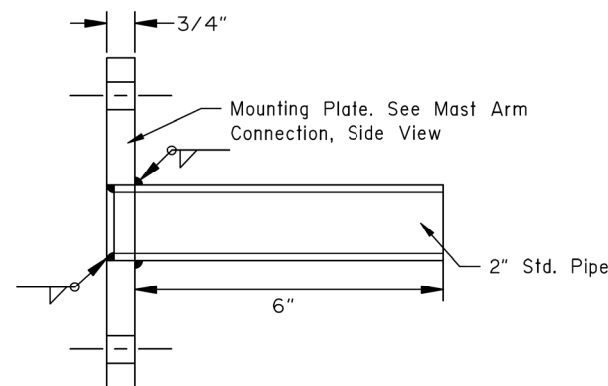


MAST ARM CONNECTION DETAIL

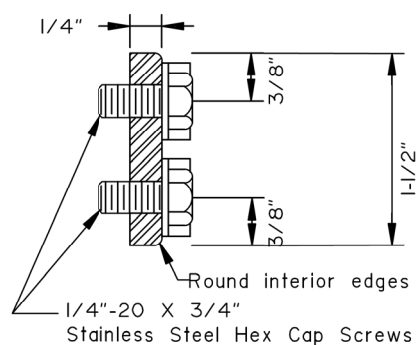
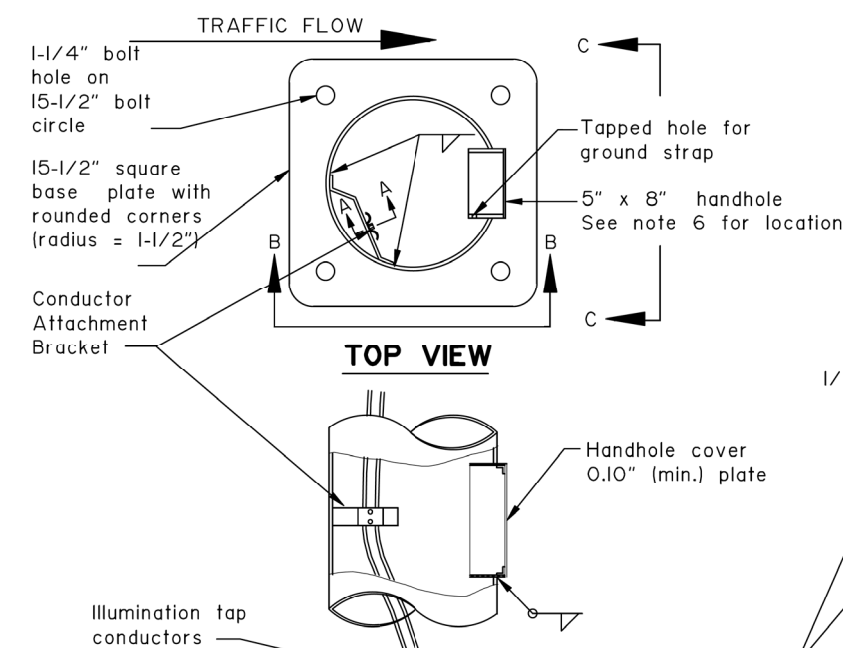
MAST ARM DATA		
ARM LENGTH	ARM RISE	SHAFT LENGTH (MAX)
22'-4"	6'-0"	40'
20'-4"	5'-6"	42'
18'-4"	4'-6"	44'
15'-4"	4'-3"	46'
12'-4"	3'-6"	49'
10'-4"	2'-6"	51'
8'-4"	2'-3"	53'
6'-4"	1'-6"	55'
4'-4"	1'-3"	55'
TENON MOUNT		55'



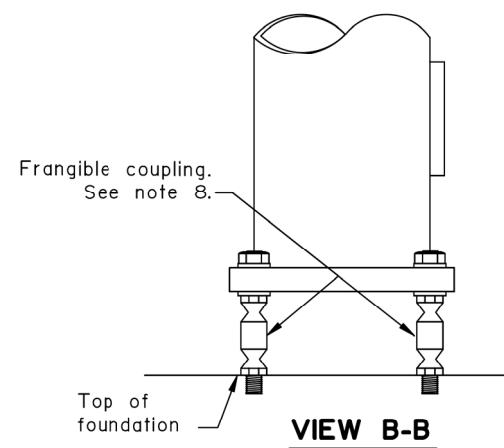
**ELECTROLIER ELEVATION
COBRA HEAD**



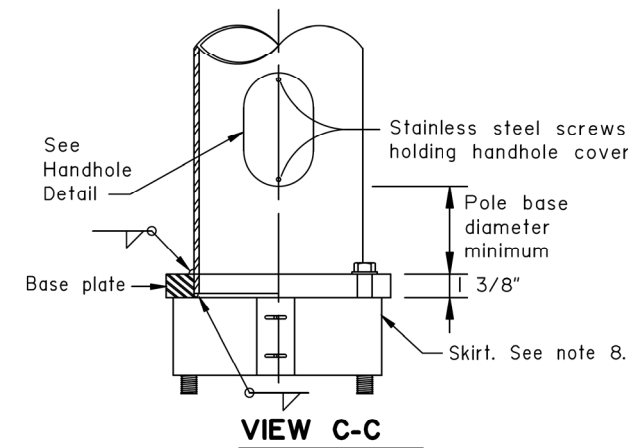
TENON MOUNT DETAIL



SECTION A-A



VIEW B-B



VIEW C-C

State of Alaska DOT&PF
ALASKA STANDARD PLAN
LIGHTING STANDARDS

Adopted as an Alaska Standard Plan by:

Lauren Little, P.E.
Interim Chief Engineer

Adoption Date: 01/29/2024

Last Code and Stds. Review
By: CMW Date: 12/19/2023

Next Code and Standards Review Date: 12/19/2033