



U.S. Department
of Transportation
**Federal Aviation
Administration**

Alaskan Region Airports Division

222 W. 7th Avenue, #14
Anchorage, Alaska 99513-7587
Tel. (907) 271-5438 / Fax (907) 271-2851

November 5, 2019

Jourde Mitchell
ADOT&PF Aviation Design
4111 Aviation Ave
Anchorage, AK 99519-6900

Dear Ms. Mitchell:

Scammon Bay Airport

Scammon Bay, Alaska

**As-Built Airport Layout Plan (26 July 2019)
(Original ALP Airspace #2003-AAL-18-NRA)**

We have completed our review of the Scammon Bay Airport As-Built Airport Layout Plan (ALP) dated July, 2019, and find it acceptable for documenting the existing conditions of the airport.

Please retain this letter in your files for future reference.

Sincerely,

Pat Zettler, P.E., Lead Engineer
Airports Division

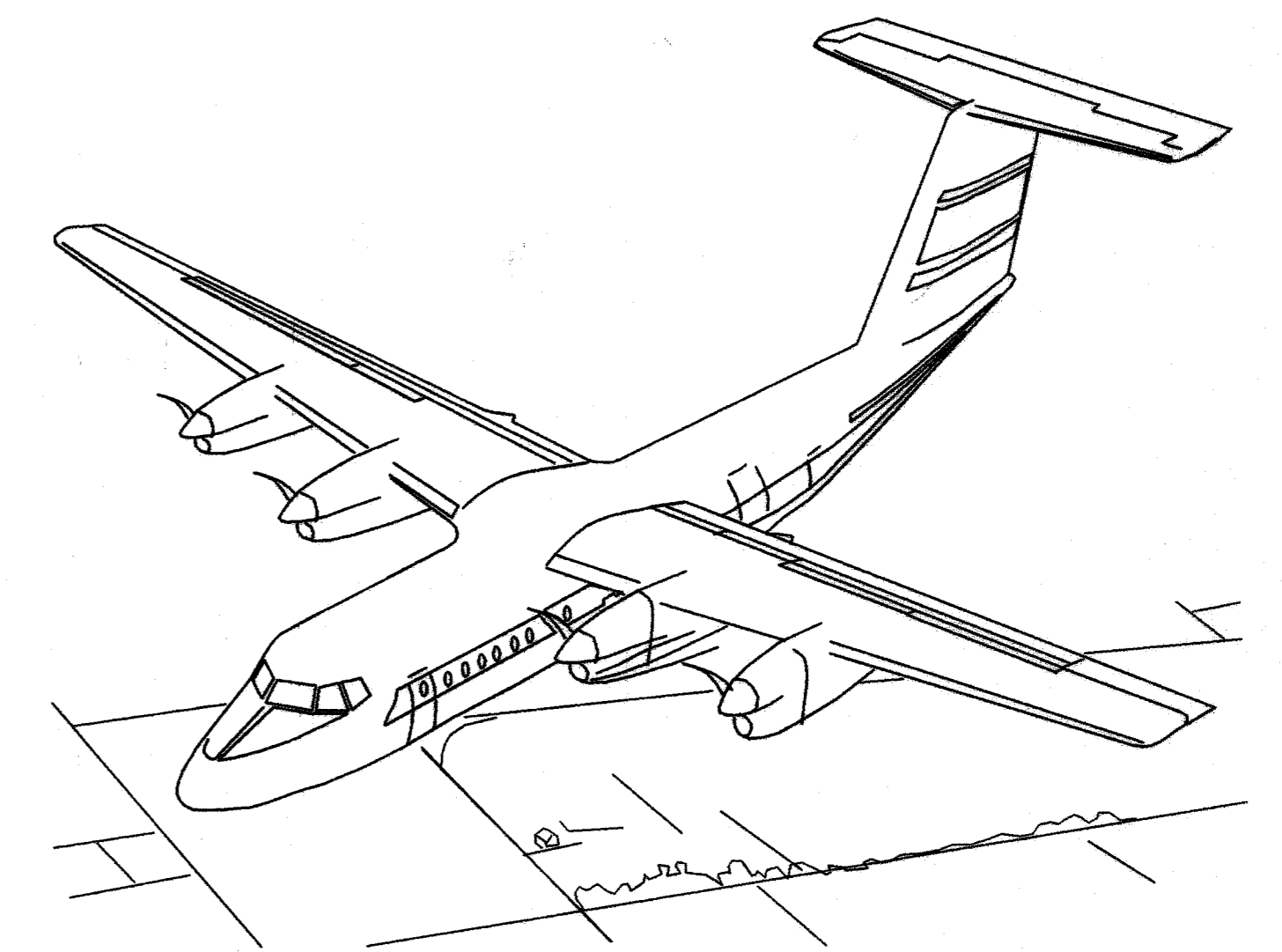
AIRPORT LAYOUT PLAN FOR SCAMMON BAY AIRPORT

2004

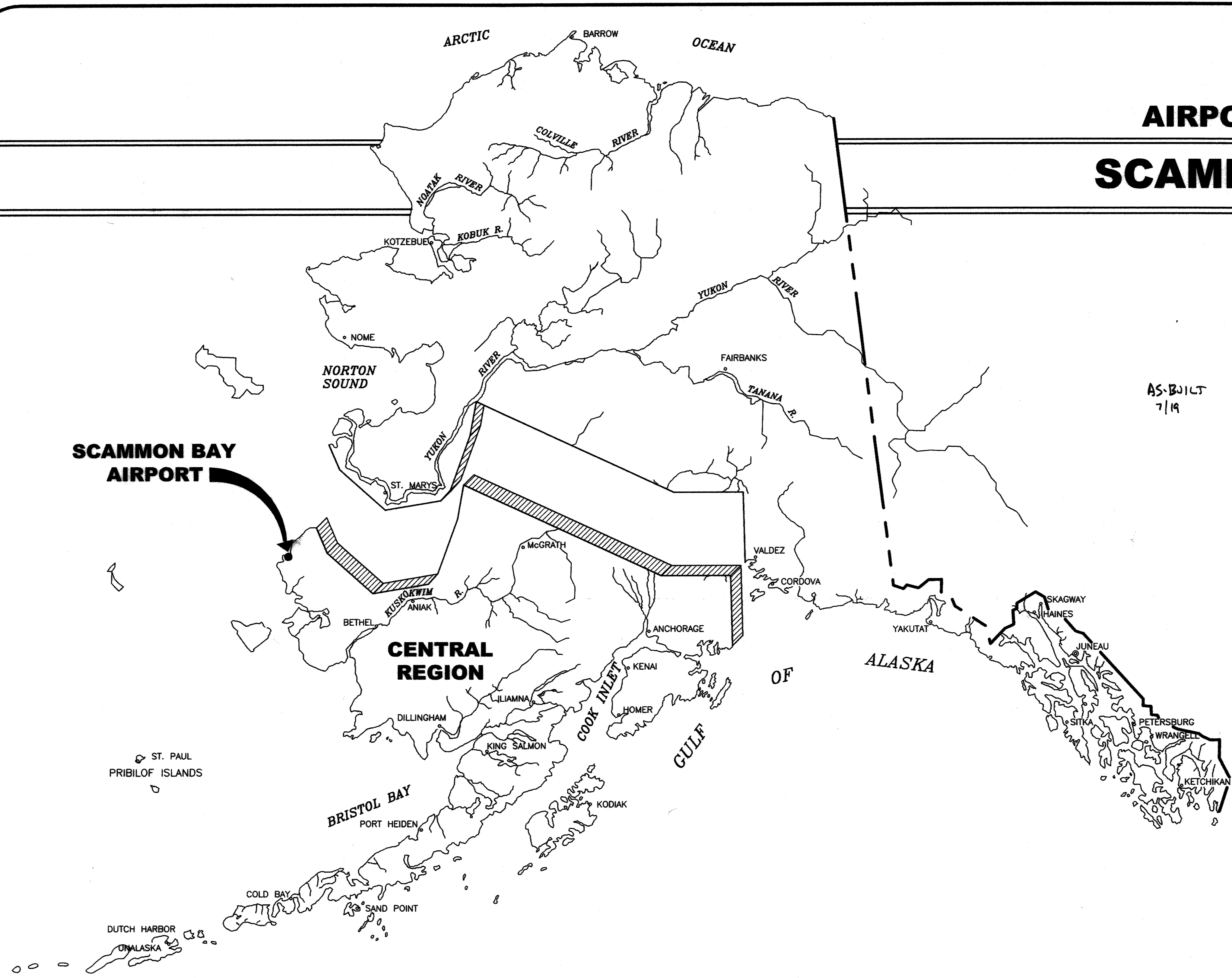
DRAWING INDEX

- 1 - COVER SHEET AND INDEX
- 2 - VICINITY MAP AND DATA TABLES
- 3 - EXISTING LAYOUT PLAN
- 4 - PLAN AND PROFILE
- 5 - INNER PORTION OF THE APPROACH SURFACE
- 6 - AIRPORT AIRSPACE
- 7 - PROPERTY PLAN
- 8 - NARRATIVE REPORT

AS-BUILT
7/19



SCAMMON BAY AIRPORT



Cover Sheet & index 1/8

**SPONSORED BY
STATE OF ALASKA
DEPARTMENT OF TRANSPORTATION
AND PUBLIC FACILITIES
CENTRAL REGION**

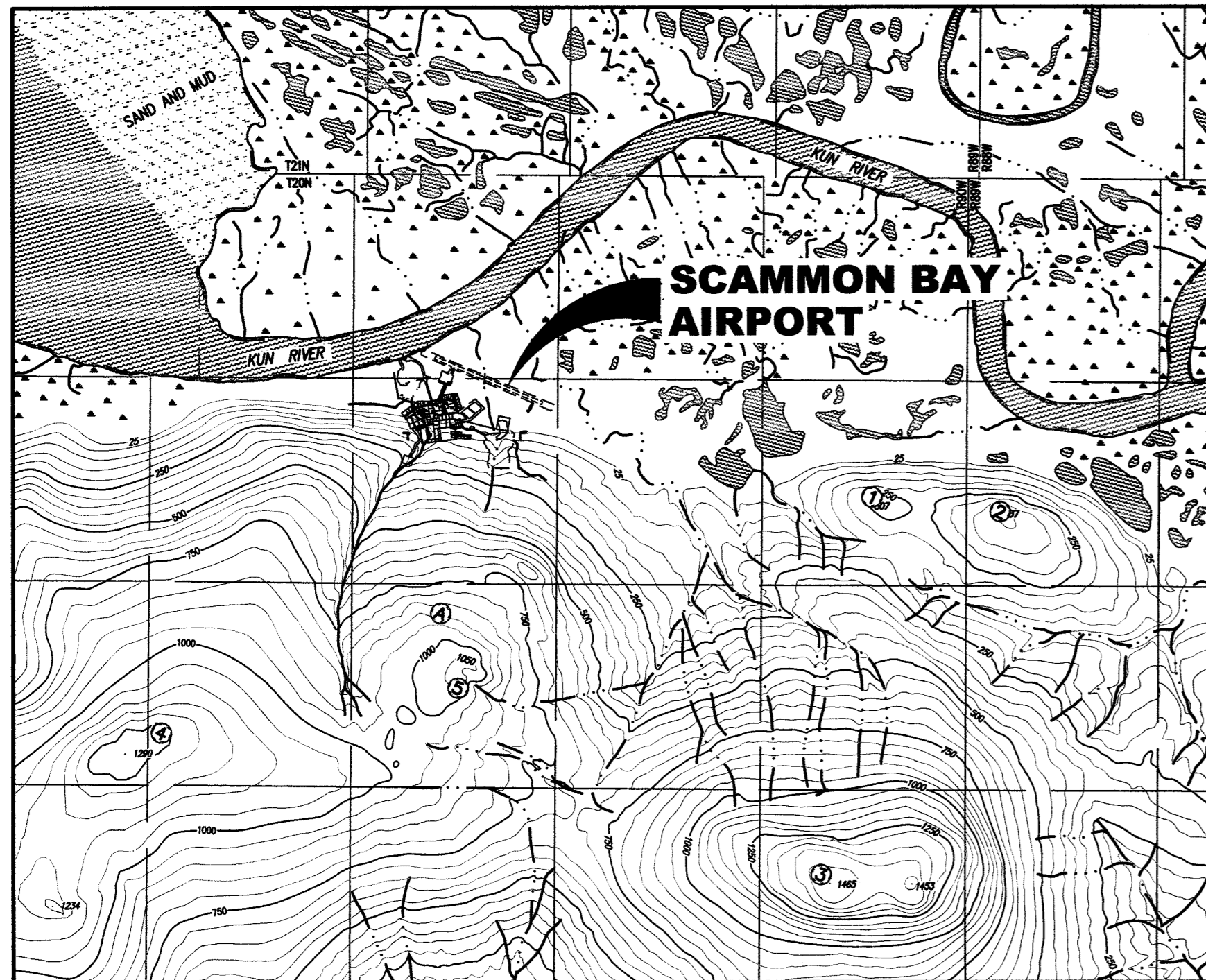
CONCUR *Gordon C. Keith* **DATE** 1/10/04
GORDON C. KEITH, P.E. **DIRECTOR OF CONSTRUCTION AND OPERATIONS**
APPROVED *Robert A. Campbell* **DATE** 1/8/01
ROBERT A. CAMPBELL, P.E. **REGIONAL PRECONSTRUCTION ENGINEER**

AIRPORT LAYOUT PLAN CONDITIONAL APPROVAL
 SUBJECT TO ALP APPROVAL LETTER DATED 2/2/04
 F.A.A. AIRSPACE REVIEW NUMBER:
 03-AAL-18NRA
 By: *J. J. Smith* DATE: 2/2/04
 F.A.A. AIRPORTS DIVISION
 ALASKAN REGION, AAL-601
 AS-BUILT SHTS 2-6 ACCEPTED 11/5/19 *M. J. J. J.* **PAL-621**

**SCAMMON BAY AIRPORT
AIRPORT LAYOUT PLAN**

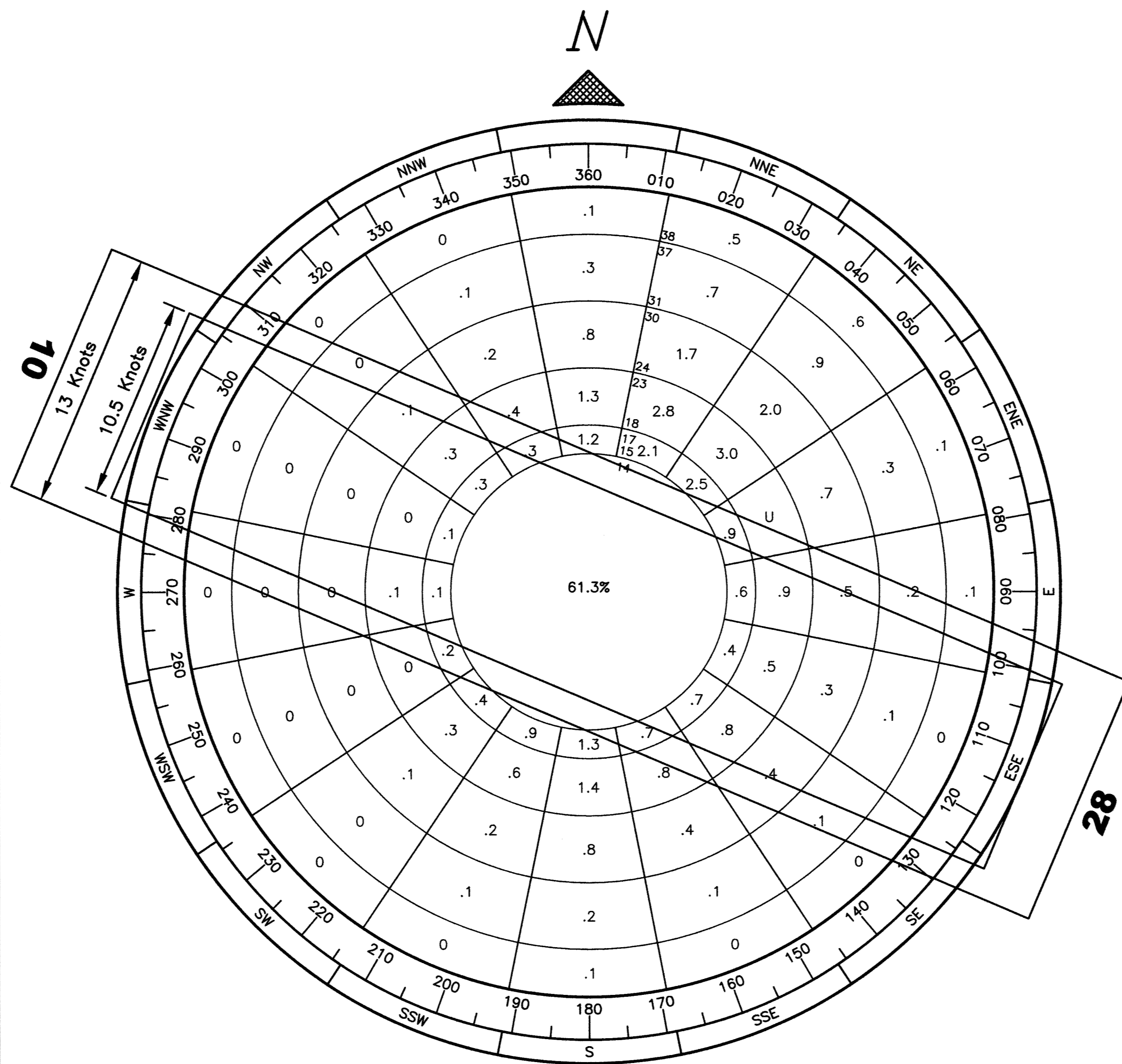
SHEET 1 OF 8

File and Date of Last Revision:
 W:\cad\data\scammonbay\ALP\SCAM_ALP.DWG 1/5/2004 12:59:15 PM AST



VICINITY MAP

T 20, R 89 W, SEC. 3, 10, & 11
SEWARD MERIDIAN
U.S.G.S. HOOPER BAY (D-2), ALASKA



WIND DATA

WIND COVERAGE: SPEED R/W 10/28
10.5 KNOTS 67.60%
13 KNOTS 70.91%

SOURCE: DATA PROCESSING DIVISION ETAC/U.S.A.F.
AIR WEATHER SERVICE/MAC

STATION: CAPE ROMANZOF, ALASKA, A.F.S.

PERIOD: 1953 - 1970

NOTE: IN THE SPRING OF 2002, FAA INSTALLED AN AWOS AT SCAMMON BAY AIRPORT. CURRENTLY IT IS AVAILABLE FOR CALL IN INFORMATION. FAA EXPECTS TO START RECORDING DATA BY JUNE 2004.

NON-STANDARD CONDITIONS			
ITEM	EXISTING	STANDARD	ULTIMATE (B-II)
ULTIMATE R/W WIDTH (WIND COVERAGE)		75'	100'

APPENDIX 2 OBSTRUCTION TABLE				
RUNWAY	OBSTRUCTION	SURFACE ELEVATION	OBSTRUCTION ELEVATION	DISPOSITION

RUNWAY DATA

ITEM	RUNWAY 10/28	
	EXISTING	ULTIMATE
EFFECTIVE GRADE	0.18%	0.18%
% WIND COVERAGE	10.5 KNOTS 67.60%	67.60%
	13 KNOTS 70.91%	70.91%
	16 KNOTS 78.25%	78.25%
INSTRUMENT RUNWAY	NPI	NPI
RUNWAY SURFACE	GRAVEL	GRAVEL
PAVEMENT STRENGTH	N/A	N/A
APPROACH SURFACES	20:1	34:1
VISIBILITY MINIMUM	> 1 mile	1 mile
RUNWAY LIGHTING	MIRL	MIRL
RUNWAY MARKING	NONE	NONE
RUNWAY NAVIGATION AIDS	NONE	PAPI, REIL
RUNWAY TYPE	UTILITY	>UTILITY
AIRCRAFT APPROACH CATEGORY	A	B
AIRCRAFT DESIGN GROUP	II	II
RUNWAY DIMENSION	75' x 3000'	100' x 4000'
RUNWAY SAFETY AREA DIMENSION	150' x 3600'	150' x 4600'
RUNWAY OBJECT FREE AREA DIMENSION	500' x 3600'	500' x 4600'
RUNWAY OBSTACLE FREE ZONE DIMENSION	250' x 3400'	250' x 4400'
RUNWAY PROTECTION ZONE DIMENSIONS	INNER 250' OUTER 450' LENGTH 1000'	500' 700' 1000'
GEODEIC POSITIONS (N.A.D. 83)		
THRESHOLD 10	LAT. 61°50'46.22" N LONG. 165°34'54.18" W	61°50'46.22" N 165°34'54.18" W
THRESHOLD 28	LAT. 61°50'34.47" N LONG. 165°33'56.82" W	61°50'30.55" N 165°33'37.70" W

TAXIWAY DATA

ITEM	EXISTING	ULTIMATE
TAXIWAY WIDTH	35'	35'
TAXIWAY SAFETY AREA WIDTH	80'	80'
TAXIWAY OBJECT FREE AREA	131'	131'

AIRPORT DATA

ITEM	EXISTING	ULTIMATE
AIRPORT ELEVATION (M.S.L.)	22.0'	22.0'
AIRPORT REFERENCE POINT (A.R.P.)	LAT. 61°50'40.35" N LONG. 165°34'25.50" W	61°50'38.39" N 165°34'15.94" W
TAXIWAY LIGHTING	MIRL	MIRL
RAMP LIGHTING	NONE	NONE
MEAN MAX. TEMPERATURE, HOTTEST MONTH (HOOPER BAY)	56°F	56°F
MAGNETIC DECLINATION, YEAR	13°46'E, 2002	
AIRPORT REFERENCE CODE	A-II (S)	B-II
AIRPORT AND TERMINAL NAVIGATION AIDS	NONE	NONE
AIRPORT NAVIGATION AIDS	ROT. BEACON GPS LT. WIND CONE SEG. CIRCLE	ROT. BEACON GPS LT. WIND CONE SEG. CIRCLE

LEGEND

ITEM	EXISTING	ULTIMATE
PROPERTY LINE	---	---
BUILDING RESTRICTION LINE	---	---
AIRPORT REFERENCE POINT (A.R.P.)	⊙	⊙
WIND CONE AND SEGMENTED CIRCLE	⊙	⊙
CONTOURS	---100---	---100---
ROADWAYS	---	---
BUILDINGS	■	■
ROTATING BEACON	⊙	⊙
SHORELINE	~	~
MONUMENT	⊙	⊙
THRESHOLD LIGHTS	⊙	⊙
FENCE	-x-x-x-	-x-x-x-

W:\cad\data\scammonbay\ALP\SCAM_ALP.DWG 1/5/2004 12:59:15 PM AST

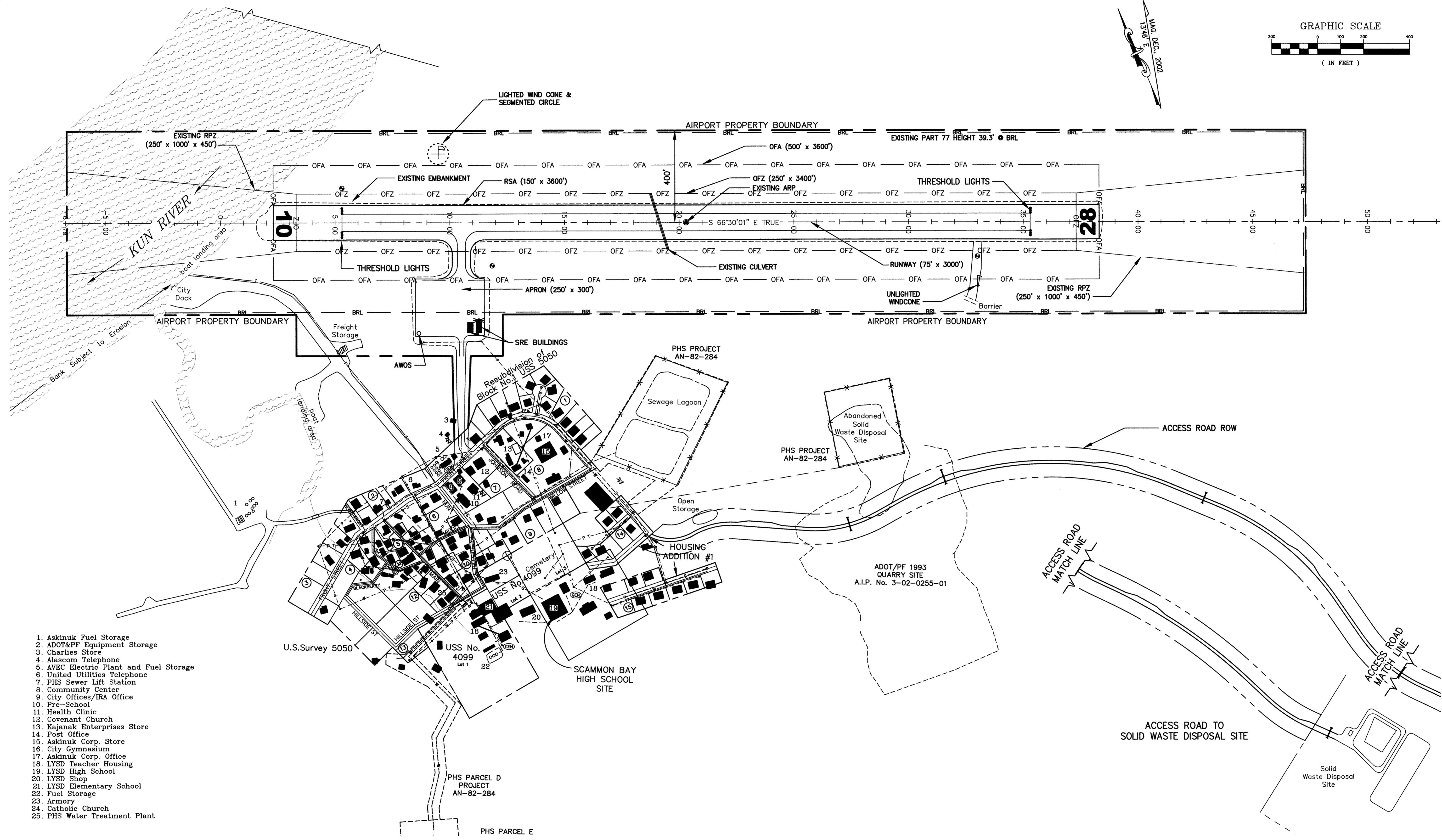
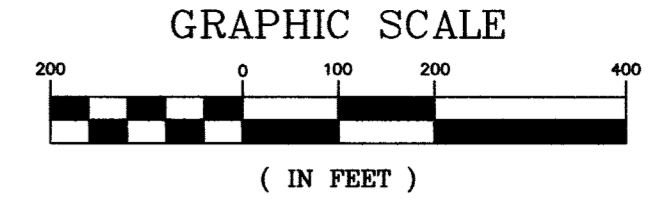
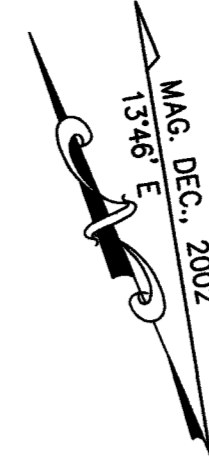
FILE:	AIRPORT LAYOUT PLAN CONDITIONAL APPROVAL SUBJECT TO ALP APPROVAL LETTER DATED
DATE:	7/2019
	ASBUILT TO CURRENT CONDITIONS POST AKSAS 58357
	BY _____ DATE _____ REVISIONS _____
	By: _____ DATE: _____ FAA, AIRPORTS DIVISION ALASKAN REGION, AAL-601
	F.A.A. AIRSPACE REVIEW NUMBER: 03-AAL-18NRA

STATE OF ALASKA DEPARTMENT OF TRANSPORTATION AND PUBLIC FACILITIES CENTRAL REGION	
APPROVED:	DESIGN SECTION CHIEF
STEPHEN M. RYAN, P.E.	
APPROVED:	PROJECT MANAGER
HARVEY M. DOUTHIT, P.E.	

DATE	01/05/04
DESIGN	JMR
DRAWN	MGT
CHECKED	TJS

SCAMMON BAY AIRPORT
AIRPORT LAYOUT PLAN VICINITY MAP AND DATA TABLES

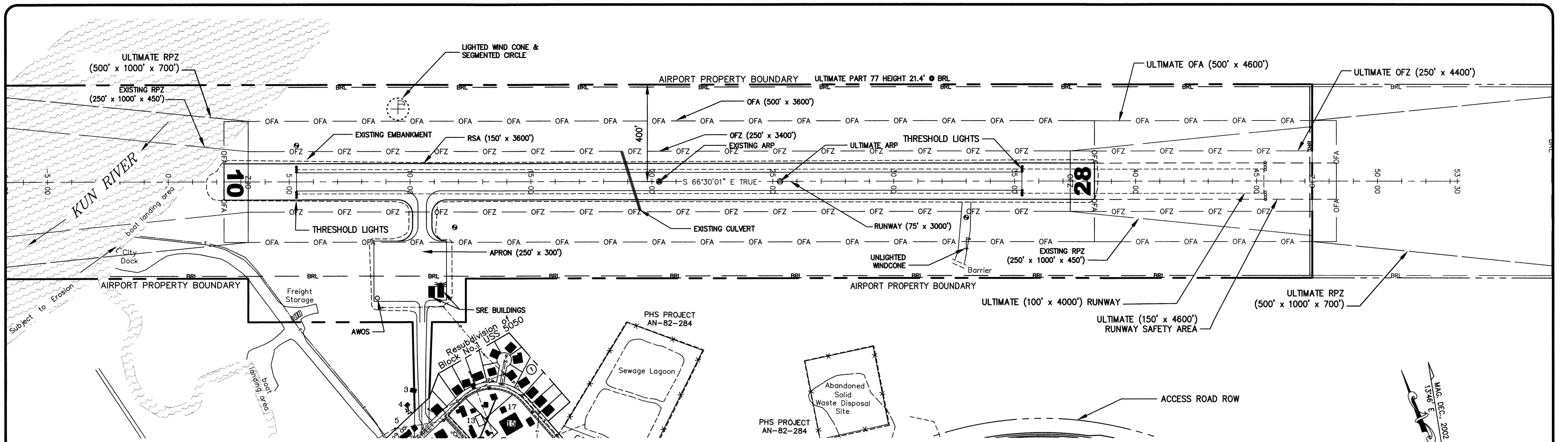
SHEET	2
OF	8



1. Askinuk Fuel Storage
2. ADOT&PF Equipment Storage
3. Charlies Store
4. Alascom Telephone
5. AVEC Electric Plant and Fuel Storage
6. United Utilities Telephone
7. PHS Sewer Lift Station
8. Community Center
9. City Offices/IRA Office
10. Pre-School
11. Health Clinic
12. Covenant Church
13. Kejanak Enterprises Store
14. Post Office
15. Askinuk Corp. Store
16. City Gymnasium
17. Askinuk Corp. Office
18. LYSD Teacher Housing
19. LYSD High School
20. LYSD Shop
21. LYSD Elementary School
22. Fuel Storage
23. Armory
24. Catholic Church
25. PHS Water Treatment Plant

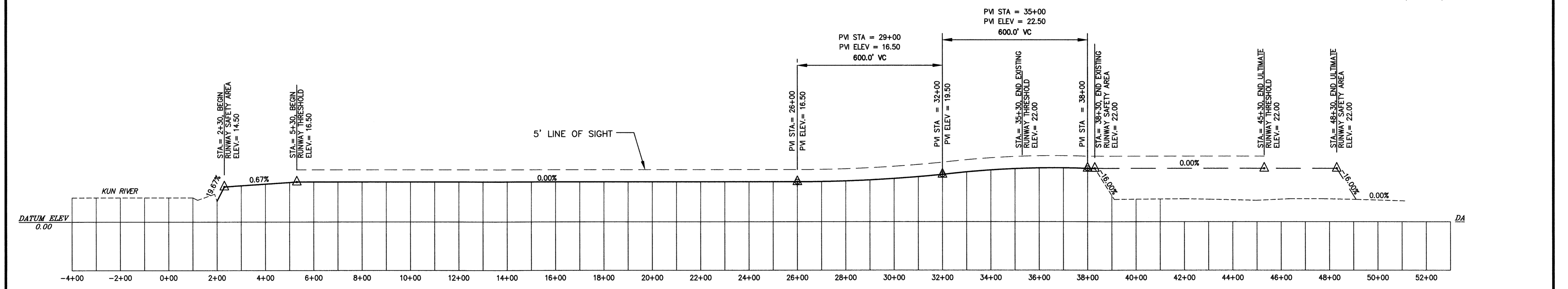
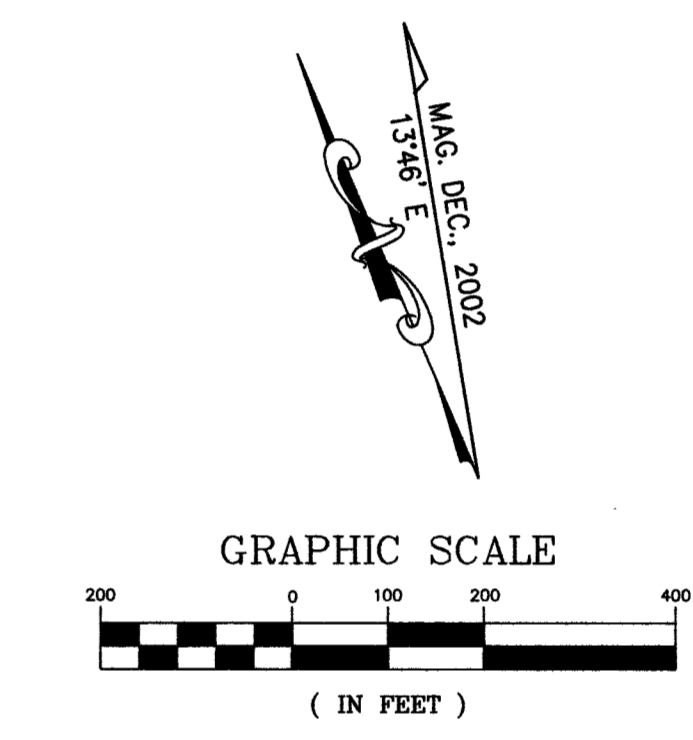
W:\cad\data\scammonbay\ALP\SCAM_ALP.DWG 1/5/2004 12:59:15 PM AST

FILE: DATE:	AIRPORT LAYOUT PLAN CONDITIONAL APPROVAL SUBJECT TO ALP APPROVAL LETTER DATED _____	7/2019 ASBUILT TO CURRENT CONDITIONS POST AKSAS 58357	STATE OF ALASKA DEPARTMENT OF TRANSPORTATION AND PUBLIC FACILITIES CENTRAL REGION	DATE <u>01/05/04</u> DESIGN <u>JMR</u> DRAWN <u>MGT</u> CHECKED <u>TJS</u>	SCAMMON BAY AIRPORT AIRPORT LAYOUT PLAN EXISTING LAYOUT PLAN	SHEET 3 OF 8
	F.A.A. AIRSPACE REVIEW NUMBER: 03-AAL-18NRA	BY _____ DATE _____ REVISIONS _____	APPROVED: STEPHEN M. RYAN, P.E. DESIGN SECTION CHIEF APPROVED: HARVEY M. DOUTHIT, P.E. PROJECT MANAGER			



PLAN

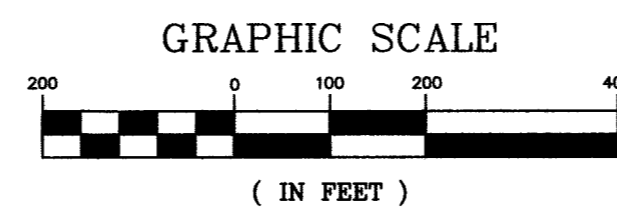
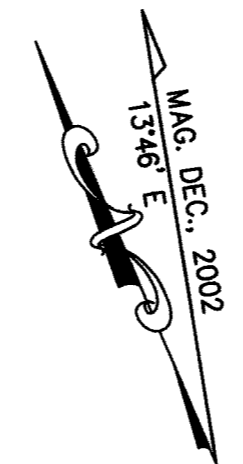
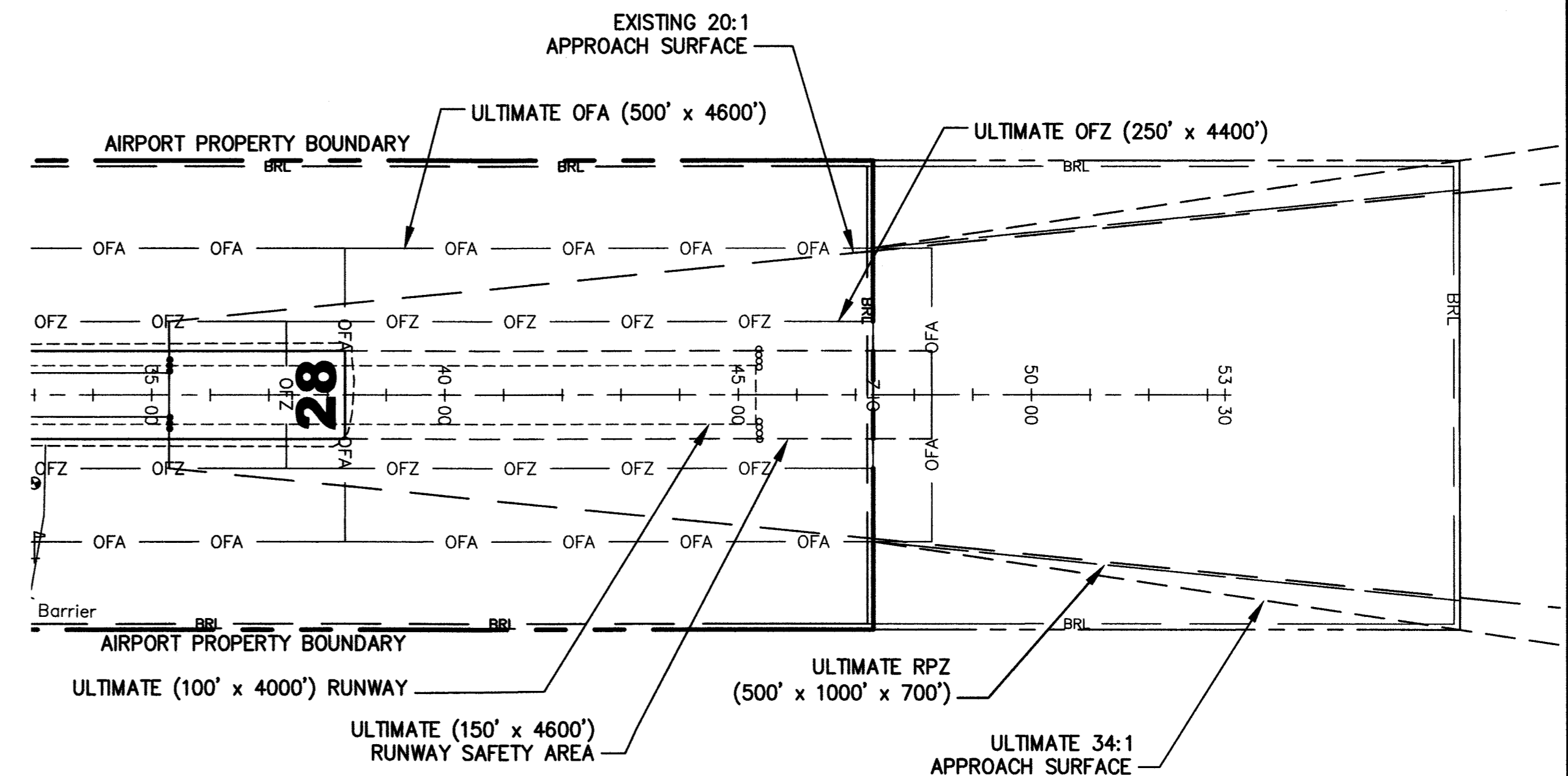
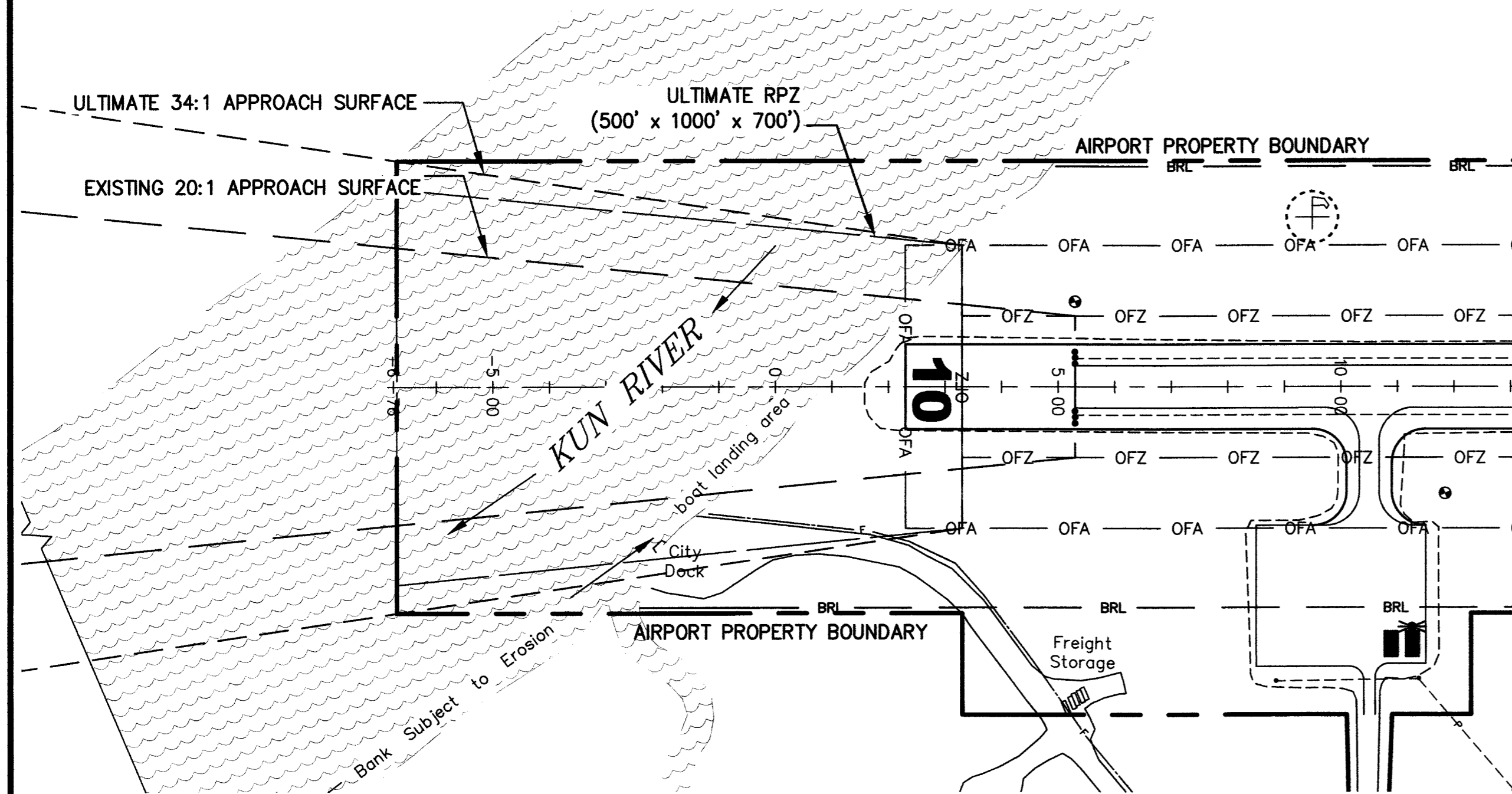
NOTE: NO OFZ OBJECT PENETRATIONS.



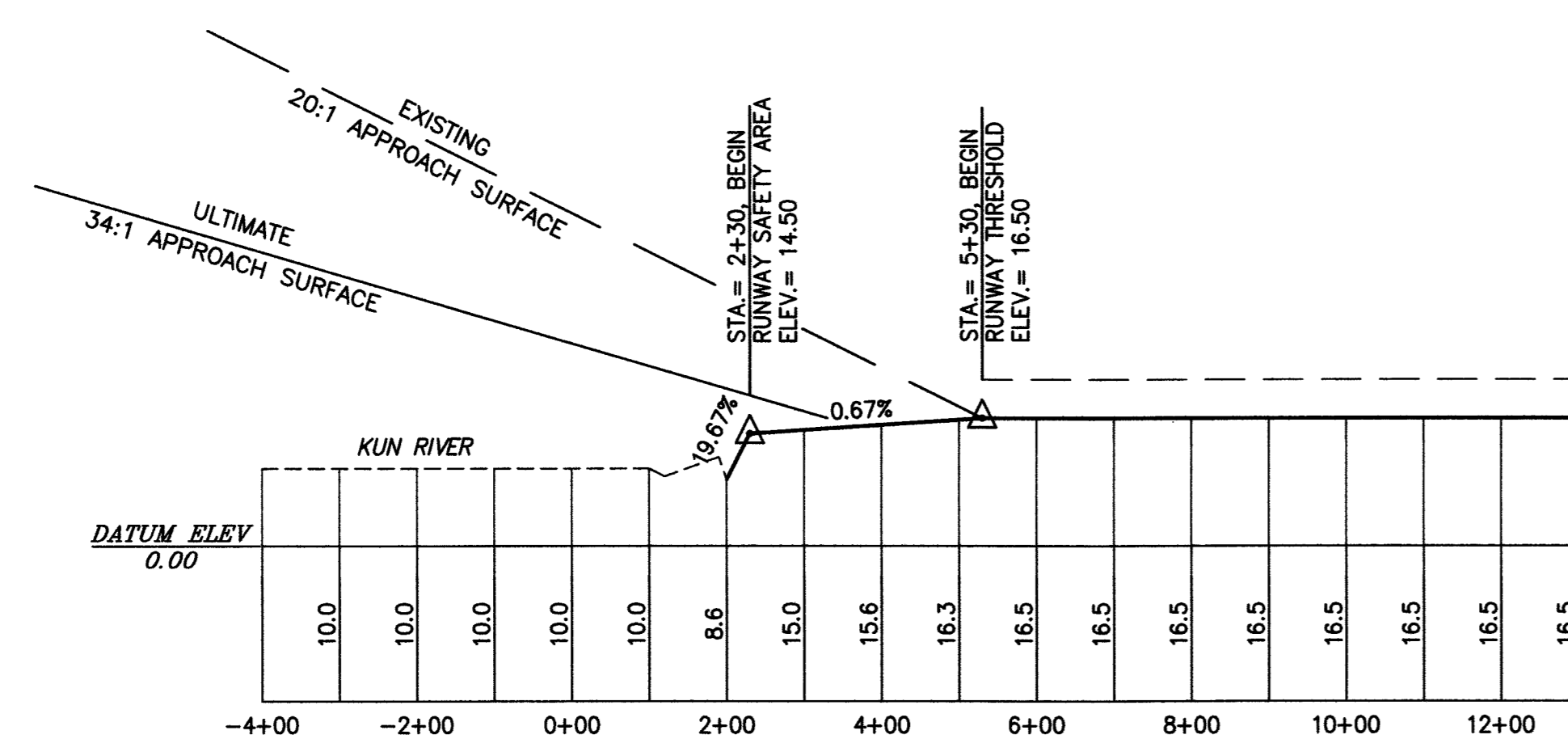
PROFILE

W:\cad\data\scammonbay\ALP\SCAM_ALP.DWG 1/5/2004 12:59:15 PM AST

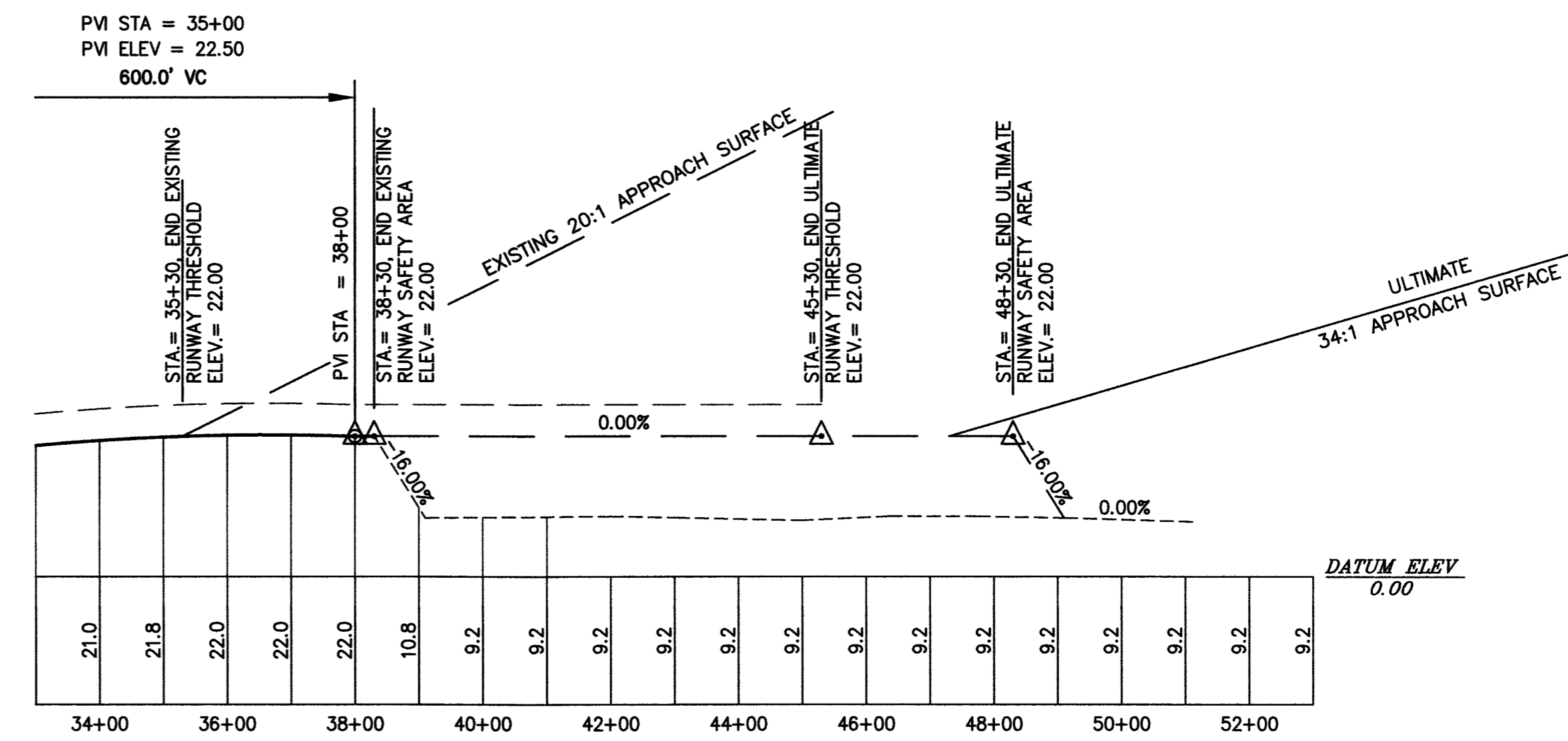
FILE: DATE:	AIRPORT LAYOUT PLAN CONDITIONAL APPROVAL SUBJECT TO ALP APPROVAL LETTER DATED	7/2019 ASBUILT TO CURRENT CONDITIONS POST AKSAS 58357	STATE OF ALASKA DEPARTMENT OF TRANSPORTATION AND PUBLIC FACILITIES CENTRAL REGION	DATE <u>01/05/04</u> DESIGN <u>JMR</u> DRAWN <u>MGT</u> CHECKED <u>TJS</u>	SCAMMON BAY AIRPORT AIRPORT LAYOUT PLAN RUNWAY PLAN AND PROFILE	SHEET 4 OF 8
	BY: _____ DATE: _____ F.A.A. AIRPORTS DIVISION ALASKAN REGION, AAL-601 F.A.A. AIRSPACE REVIEW NUMBER: 03-AAL-18NRA	BY: _____ DATE: _____ REVISIONS: _____	APPROVED: STEPHEN M. RYAN, P.E. DESIGN SECTION CHIEF APPROVED: HARVEY M. DOUTHIT, P.E. PROJECT MANAGER			



RUNWAY 10



RUNWAY 28



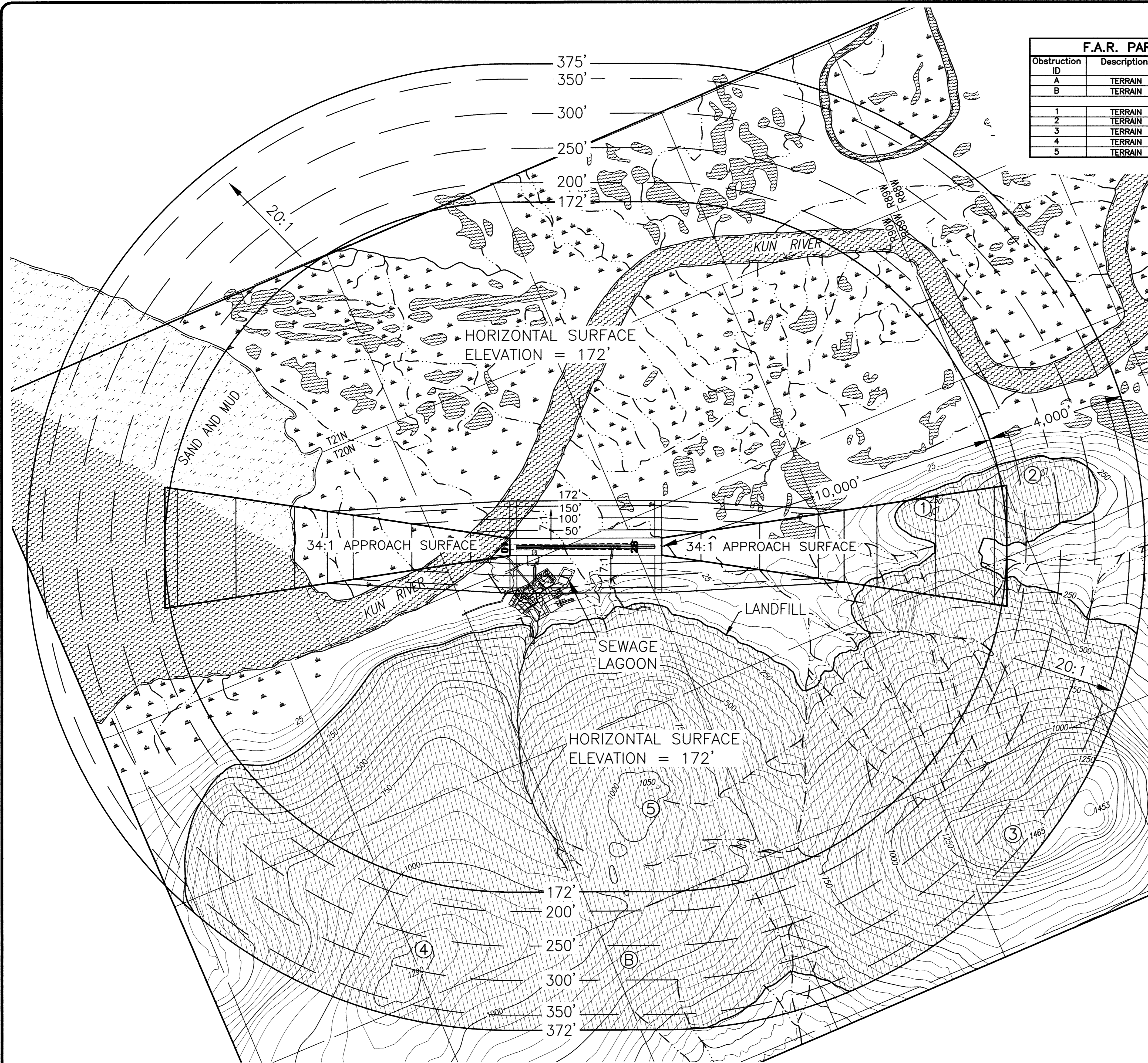
NOTES:

1. NO THRESHOLD SITING SURFACE OBJECT PENETRATIONS - SEE NARRATIVE SHT. 8
2. OBSTRUCTION CLEARANCE SLOPE RW 10 > 50:1, RW 28 26:1 - SEE SHEET 6

W:\cad\data\scammonbay\ALP\SCAM_ALP.DWG 1/5/2004 12:59:15 PM AST

AIRPORT LAYOUT PLAN CONDITIONAL APPROVAL SUBJECT TO ALP APPROVAL LETTER DATED _____ By: _____ DATE: _____ FAA, AIRPORTS DIVISION ALASKAN REGION, AAL-801 F.A.A. AIRSPACE REVIEW NUMBER: 03-AAL-18NRA	7/2019 ASBULT TO CURRENT CONDITIONS POST AKSAS 58357	STATE OF ALASKA DEPARTMENT OF TRANSPORTATION AND PUBLIC FACILITIES CENTRAL REGION	DATE <u>01/05/04</u> DESIGN <u>JMR</u> DRAWN <u>MGT</u> CHECKED <u>TJS</u>	SCAMMON BAY AIRPORT AIRPORT LAYOUT PLAN INNER PORTION OF THE APPROACH SURFACE	SHEET 5 OF 8
	BY DATE REVISIONS		APPROVED: STEPHEN M. RYAN, P.E. DESIGN SECTION CHIEF APPROVED: HARVEY M. DOUTHIT, P.E. PROJECT MANAGER		

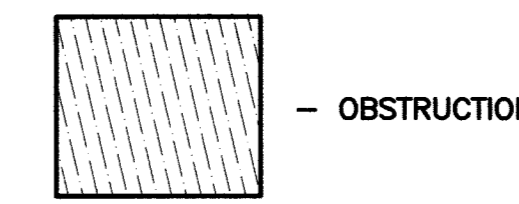
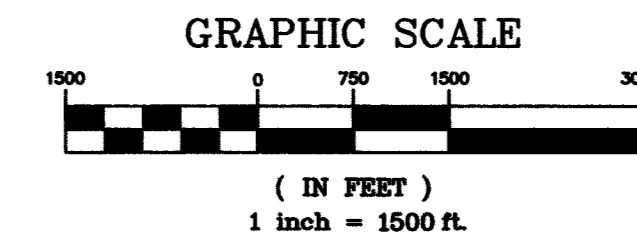
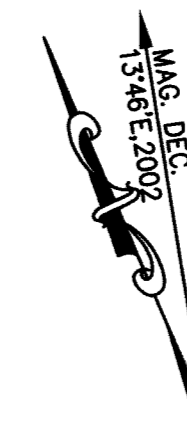
Date Plotted: 07/05/04
 Plot Ratio and Layout: 1"=1, layout=
 File: W:\oad\data\acrommonby\ALP\SCAM_ALP.DWG - 1/5/2004 - 12:59:15 PM AST
 Designed By: BH
 Checked By: TJS
 Drawn By: MGT



F.A.R. PART 77 IMAGINARY SURFACE OBSTRUCTION TABLE							
Obstruction ID	Description	Obstruction Elevation	Surface Penetrated	Part 77 Surface Elevation	Max. Amount of Penetration	Disposition	Stage
A	TERRAIN	172'-1050'	HORIZONTAL	172'	880'	NONE	N/A
B	TERRAIN	172'-1465'	CONICAL	172' - 372'	1135'	NONE	N/A
1	TERRAIN	307'	HORIZONTAL	172'	135'	NONE	N/A
2	TERRAIN	437'	CONICAL	172' - 372'	215'	NONE	N/A
3	TERRAIN	1465'	CONICAL	172' - 372'	1135'	NONE	N/A
4	TERRAIN	1290'	CONICAL	172' - 372'	990'	NONE	N/A
5	TERRAIN	1050'	HORIZONTAL	172'	880'	NONE	N/A

NOTES:

- OBSTRUCTION ELEVATIONS ARE ESTIMATED FROM USGS MAPPING.
- ULTIMATE AIRPORT ELEVATION IS 22.0'
- USGS QUADRANGLE MAPS HOOPER BAY D-2 ALONG WITH YEAR 1997 PHOTO-BASED MAPPING WERE USED FOR THE BASE MAP.



F.A.A. AIRSPACE REVIEW NUMBER:
 03-AAL-18NRA
 AIRPORT LAYOUT PLAN CONDITIONAL APPROVAL
 SUBJECT TO ALP APPROVAL LETTER DATED _____

By: _____ DATE: _____
 FAA, AIRPORTS DIVISION
 ALASKAN REGION, AAL-601

DATE	DESIGN	DRAWN	CHECKED	BY	DATE	REVISIONS
01/05/04	JMR	MGT	TJS			
7/2019						

DATE 01/05/04
 DESIGN JMR
 DRAWN MGT
 CHECKED TJS

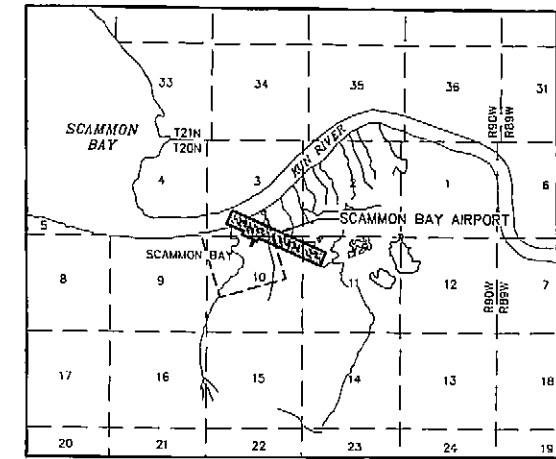
STATE OF ALASKA
 DEPARTMENT OF TRANSPORTATION
 AND PUBLIC FACILITIES
 CENTRAL REGION
 PROJECT MANAGER
 DESIGN SECTION CHIEF
 APPROVED: STEPHEN M. RYAN, P.E.
 APPROVED: HARVEY M. DOUGHTY, P.E.

AIRPORT
 AIRPORT LAYOUT PLAN
 AIRPORT AIRSPACE

SHEET
 6 OF 8

PARCEL	AREA	GRANTOR / GRANTEE	INTEREST	Book / Page	DATE ACQUIRED	A.D.A. No.
1	87 Ac. +/-	Callisto Corp / SOA DOT/PF Askinuk Corp. / SOA DOT/PF	QCD, Subsurface Estate Warranty Deed, Surface Estate	55 / 382 55 / 387	3/13/1991 12/19/1990	
2	0.55 Ac. +/-	Callisto Corp / SOA DOT/PF Askinuk Corp. / SOA DOT/PF	QCD, Subsurface Estate Warranty Deed, Surface Estate	55 / 382 55 / 387	3/13/1991 12/19/1990	
3	15.3 Ac. +/-	SOA DNR / SOA DOT/PF	Avigation & Hazard Esmt	55 / 30	2/26/1991	
4	18.4 Ac. +/-	Callisto Corp / SOA DOT/PF Askinuk Corp. / SOA DOT/PF	Subsurface Estate Surface Estate		To Be Acquired	

SOA DOT/PF = State of Alaska Dept. of Transportation and Public Facilities
SOA DNR = State of Alaska Dept. of Natural Resources

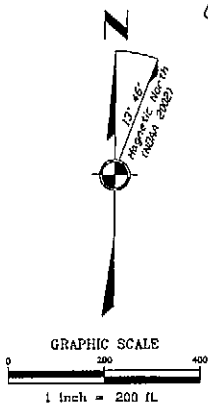
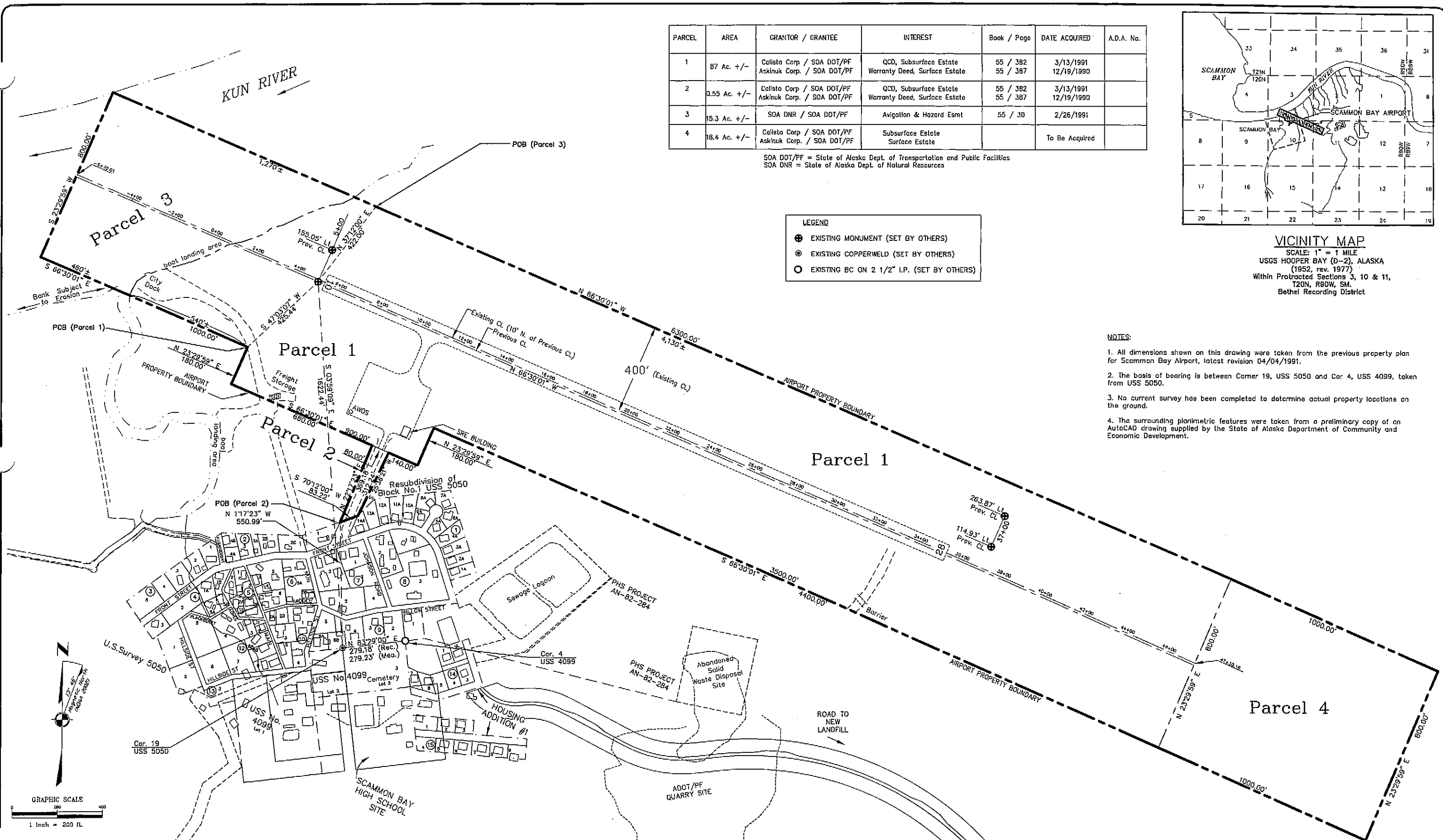


VICINITY MAP
SCALE: 1" = 1 MILE
USGS HOOPER BAY (D-2), ALASKA
(1952, rev. 1977)
Within Protracted Sections 3, 10 & 11,
T20N, R80W, SM,
Bethel Recording District

- LEGEND**
- ⊕ EXISTING MONUMENT (SET BY OTHERS)
 - ⊙ EXISTING COPPERWELD (SET BY OTHERS)
 - EXISTING BC ON 2 1/2" I.P. (SET BY OTHERS)

NOTES:

- All dimensions shown on this drawing were taken from the previous property plan for Scammon Bay Airport, latest revision 04/04/1991.
- The basis of bearing is between Corner 19, USS 5050 and Cor 4, USS 4099, taken from USS 5050.
- No current survey has been completed to determine actual property locations on the ground.
- The surrounding planimetric features were taken from a preliminary copy of an AutoCAD drawing supplied by the State of Alaska Department of Community and Economic Development.



\\acad\data\scammonbay\row\prop_plandwg 1/5/2004 1:09:14 PM AST

THIS PLAN SUPERSEDES PREVIOUS PLAN DATED 1/25/90, REV. 4/04/1991

AIRPORT LAYOUT PLAN CONDITIONAL APPROVAL SUBJECT TO ALP APPROVAL LETTER DATED 2/2/04 BY: <i>[Signature]</i> DATE: 2/2/04 FAA AIRPORTS DIVISION ALASKAN REGION, AAL-601 F.A.A. AIRSPACE REVIEW NUMBER: 88-AAL-18NRA	STATE OF ALASKA DEPARTMENT OF TRANSPORTATION AND PUBLIC FACILITIES CENTRAL REGION APPROVED: <i>[Signature]</i> DESIGN SECTION CHIEF APPROVED: <i>[Signature]</i> PROJECT MANAGER	DATE 02/05/03 DESIGN _____ DRAWN PLH CHECKED _____	SCAMMON BAY AIRPORT AIRPORT PROPERTY PLAN	SHEET 7 OF 8
				BY DATE REVISIONS

**SCAMMON BAY AIRPORT
NARRATIVE REPORT**

A. Purpose

This narrative report is included with the Airport Layout Plan (ALP) for Scammon Bay in accordance with Federal Aviation Administration (FAA) Airport Design Advisory Circular (AC) 150/5300-13, Change 6, Appendix 7. The rationale for improvements to the Scammon Bay is outlined in this narrative report.

B. Introduction

This Airport Layout Plan supersedes the Scammon Bay ALP approved by the FAA on February 8, 1991.

Scammon Bay is located on the south bank of the Kun River, one mile from the Bering Sea. It lies to the North of the 2,500-foot Askinuk Mountains on the Yukon-Kuskokwim Delta. It lies approximately 61° 50' N Latitude, 165° 35' W Longitude (Sec. 10, T020N, R090W, Seward Meridian). The community is incorporated as a second class city with a mayor-council form of government.

The 2001 U.S. census documents a population of 465 persons at Scammon Bay.

Population History:	1940 88
	1950 103
	1960 226
	1970 166
	1980 250
	1990 343
	2000 465

Scammon Bay is a Yup'ik Eskimo community that relies on fishing and subsistence activities. Most residents travel to the Black River each summer for fish camp, 50 miles to the north. Employment is focused on commercial fishing. Fire fighting for BLM, construction projects and handicrafts also provide seasonal income. Subsistence activities provide fish, beluga whale, walrus, seal, birds and berries.

C. Airport Usage and Forecasts

The Alaska Aviation System Plan (AASP) has designated this airport as a Community Class Airport, which is defined as the primary access to a small rural community of at least 25 permanent year-round residents without reliable alternate year round access.

Since there is no tower at the Scammon Bay Airport, estimates of aircraft are based on the fleet of current users and current schedules and the Airport Master Record (FAA Form 5010). The FAA Form 5010 reports the following data for annual operations:

Air Taxi	1,000
GA Local	0
GA Itinerant	300
Military	0
Total	1,300

The FAA reports 2,500 enplanements at Scammon Bay for 2001.

A survey conducted by the current operators report the following data for annual operations:

Air Taxi 3216
Charters 265

The current operators report 10,275 enplanements at Scammon Bay for 2001.

See Table 1 for operators and aircraft using the Scammon Bay airport at this time.

Currently, Tanana Air operates a daily flight five days a week to Scammon Bay. Bell Air, Larry's Flying Service, and Flight Alaska, operate daily flights six days a week to Scammon Bay. Arctic Transportation Service and Arctic Circle Air operate daily flights three days a week to Scammon Bay. Era Aviation operates two daily flights six days a week to Scammon Bay. Hageland Air and Grant Air operate two daily flights six days a week and one daily flight one day a week. All Air Services deliver mail to Scammon Bay, except Yukon Aviation and Craig Air. Grant Air holds the medical contract. All Air Services fly to and from Bethel. Penn Air, Northern Air Cargo, and Evergreen International do not currently conduct any operations at the Scammon Bay airport nor do any of these operators plan to in the future. There are no aircraft based at Scammon Bay.

See Table 2, for the forecast of future operations according to the survey conducted by the current operators. The projected future aircraft operations are based on current conditions for 5, 10, and 20 years into the future. These estimates are based on population forecasts, forecasts of current activity levels along with phone surveys of the carriers. The growth used for the Scammon Bay Airport is estimated at 3% a year (1.03ⁿ where n equals the number of years). These parameters were considered to be a better predictor of the future activity than combining traditional forecasting parameters of the future operations with future aircraft.

D. Staged Development

Near-Term Development (0-5 years)

A grant was issued in 2003 to construct a one bay snow removal equipment building, its estimated cost is \$650,000.

Mid-Term Development (6-10 years)

There is no mid-term development plan for Scammon Bay Airport.

Long-Term Development (11-20 years)

To increase the existing runway dimensions to 100 feet by 4,000 feet. It is estimated to cost \$2,300,000 million in 2002 dollars.

E. Design Rationale

1. Airport Reference Code (ARC)

The existing Airport Reference Code is A-II. There are a category A-I, A-II, and B-I aircraft operating on a regular basis at this facility and occasional use by B-II aircraft. There is occasional use by aircraft above A-II, but does not justify a higher ARC.

The most demanding aircraft to use the airport on a regular basis is the Piper Navajo. The Piper Navajo, a category B group I aircraft having an approach speed of 100 knots, wingspan of 40.7 feet, and a maximum take off weight of 6200 lbs. The Yukon Kuskokwim Transportation Plan assumes that the future demands of the community will require the use of a Dash 8, which is a category A group III aircraft.

2. Wind Coverage

Currently, there is no wind data available for Scammon Bay. The wind data collected at Cape Romanzof, located 50 miles southwest from Scammon Bay, was used to perform wind coverage analysis. The existing runway 10-28 alignment provides 70.91% coverage for 13-knot crosswind component and 67.60% coverage for 10.5-knot crosswind component.

In 2001 FAA installed an AWOS at the Scammon Bay Airport. Currently, the system is operational for call up, but is not recording. FAA intends to start recording data by June 2004.

The crosswind runway will not be analyzed until wind data for Scammon Bay is available.

3. Runway and Taxiway

The existing runway length is 3,000 feet. The existing runway and taxiway width is designed to accommodate Group II aircraft.

The 2002 Yukon-Kuskokwim Delta Transportation Plan recommends that the Scammon Bay airport runway dimensions be increased to 4,000 feet by 100 feet in the long-term development plans.

4. Apron

The existing Apron is 250 feet by 300 feet and is setback 250 feet from the runway. The apron design meets the recommended standards. Currently the apron contains an AWOS and one snow removal building with a rotating beacon. There will be a second snow removal building constructed next to the existing building in 2003. Currently aircraft tie-downs are not available.

F. Property Status

The existing Scammon Bay Airport is operated by DOT & PF and is located on approximately 117 acres of land. A property plan has been included as part of this ALP.

G. Hazards to Navigation

The sewage lagoon in Scammon Bay is approximately 580 feet away from the runway. The solid waste disposal site is approximately 3,900 feet away from the existing runway & 3,200 feet from the ultimate runway. Both of sites are less than the recommended 5,000 feet. Correspondence with DEC shows there are no plans to relocate the sewage lagoon. A letter of non-objection was received by DEC for the solid waste disposal site from FAA on November 17, 1997. A wildlife hazard assessment will be requested prior to increasing runway dimensions.

H. Appendix 2 Obstructions

According to the information DOT & PF has there are no threshold siting surface object penetrations for runway 10/28. The Scammon Bay Airport meets the requirements for straight in night operations, although no surveys were performed to verify this.

Appendix 2 section e of paragraph 5 of the Airport Design AC is for approach end of runways expected to support instrument straight-in night operations. Requirements are that no object should penetrate a surface that starts 200 feet out from the threshold and slopes upward from the starting point at a slope of 20(horizontal) to 1(vertical). Additionally the surface extends laterally 400 feet on either side of the centerline.

I. Community Involvement

A copy of the Airport Layout Plan was sent to the community on February 10, 2003 for their review, comments were received November 2, 2003.

J. Modifications to Standards

The runway length is 3,000 feet. The recommended standard length for a community class runway is 3,300 feet.

K. Encroachments in Part 77 Surfaces

There are terrain obstructions on the south & west of the airport. The terrain penetrates the horizontal and conical surfaces to a maximum height of 1135 feet. The obstructions will not be removed.

L. Future Land Development

Property will be acquired on the east end of the runway for the 1,000-foot runway expansion.

OPERATOR	AIRCRAFT	DESIGN GROUP
Bell Air	Piper Cherokee	A-I
Alaska Central Express	Cessna 207	A-I
	Beech Airliner 1900	B-II
Tanana Air	Piper Saratoga	A-I
Craig Air	Cessna 172	A-I
	Cessna 182	A-I
	Cessna 207	A-I
Yukon Aviation	Cessna 172	A-I
	Cessna 207	A-I
Grant Air	Piper Navajo	B-I
	Cessna 208	A-II
	Beech King Air	B-II
Larry's Flying Service	Cessna 207	A-I
	Cessna 172	B-II
	Piper Saratoga	A-I
	Piper Navajo	B-I
Arctic Transportation Service	Cessna 207	A-I
	Cessna 402	B-II
	Casa 212	A-II
Arctic Circle Air	Cessna 206	A-I
	Cessna 207	A-I
	Cessna 208	A-II
	SC-7 Short Sky Van	A-II
Flight Alaska	Cessna 207	A-I
	Piper Navajo	B-I
	Casa 212	A-II
Village Aviation	Cessna 206	A-I
	Cessna 207	A-I
Hageland Aviation	Cessna Grand Caravan	A-II
	Cessna F-406	B-II
Era Aviation	DHC-6 Twin Otter	A-II

ITEM	Forecast of Future Operations			
	Present	0 - 5 yrs	6 - 10 yrs	11 - 20 yrs
Total Annual Operations	3480	4034	4676	6285
Annual Enplanements	10275	11911	13608	18557
Annual Scheduled Operations	3215	3727	4320	5806
Annual Non-Scheduled Operations	265	307	356	478

W:\data\scammonbay\ALP\SCAM_ALP.DWG 1/5/2004 12:59:15 PM AST

AIRPORT LAYOUT PLAN CONDITIONAL APPROVAL SUBJECT TO ALP APPROVAL LETTER DATED <u>2/2/04</u> By: <u>[Signature]</u> DATE: <u>2/2/04</u> FAA AIRPORTS DIVISION ALASKAN REGION, AAL-801 F.A.A. AIRSPACE REVIEW NUMBER: 03-AAL-18NRA	BY _____ DATE _____ REVISIONS _____	STATE OF ALASKA DEPARTMENT OF TRANSPORTATION AND PUBLIC FACILITIES CENTRAL REGION APPROVED: <u>[Signature]</u> DESIGN SECTION CHIEF STEPHEN M. RYAN, PE APPROVED: <u>[Signature]</u> PROJECT MANAGER HARVEY M. DOUTHIT, PE	DATE <u>01/05/04</u> DESIGN <u>JMR</u> DRAWN <u>MGT</u> CHECKED <u>TJS</u>	SCAMMON BAY AIRPORT AIRPORT LAYOUT PLAN NARRATIVE REPORT	SHEET 8 OF 8
	FILE: _____ DATE: _____				