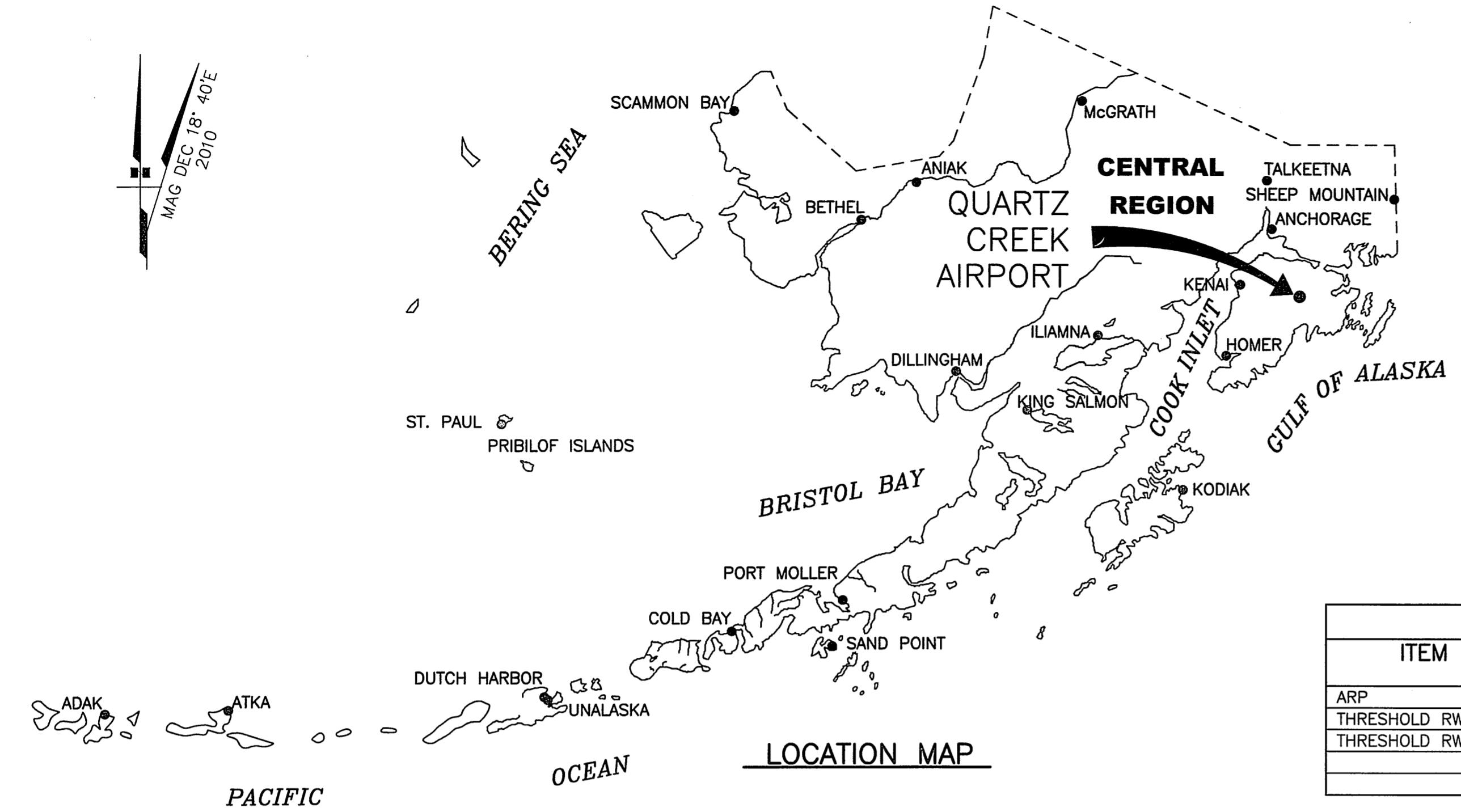


FILE No.:  
 Date Plotted: 6/15/2011, 9:18 AM  
 Layout Name: DATA(1)  
 File Name: P:\Projects\DS942270\QuartzCreek\ALP\ALP-QUARTZ.dwg  
 Designed By: nlewellyn  
 Drawn By: baquin  
 Checked By: bhanson



LEGEND		
ITEM	EXISTING	ULTIMATE
AIRPORT REFERENCE POINT (ARP)		
ANTENNA		
BLUFF		
BUILDINGS		
BUILDING RESTRICTION LINE (BRL)		
FENCE		
PAPI		
PROPERTY LINE		
REIL		
ROADWAYS		
ROTATING BEACON		
SHORELINE		
SURVEY MONUMENT		
THRESHOLD MARKERS/LIGHTS		
TOPOGRAPHIC CONTOURS		
TREE (LARGE SINGLE)		
TREELINE		
VASI		
WIND CONE		
WIND CONE AND SEGMENTED CIRCLE		

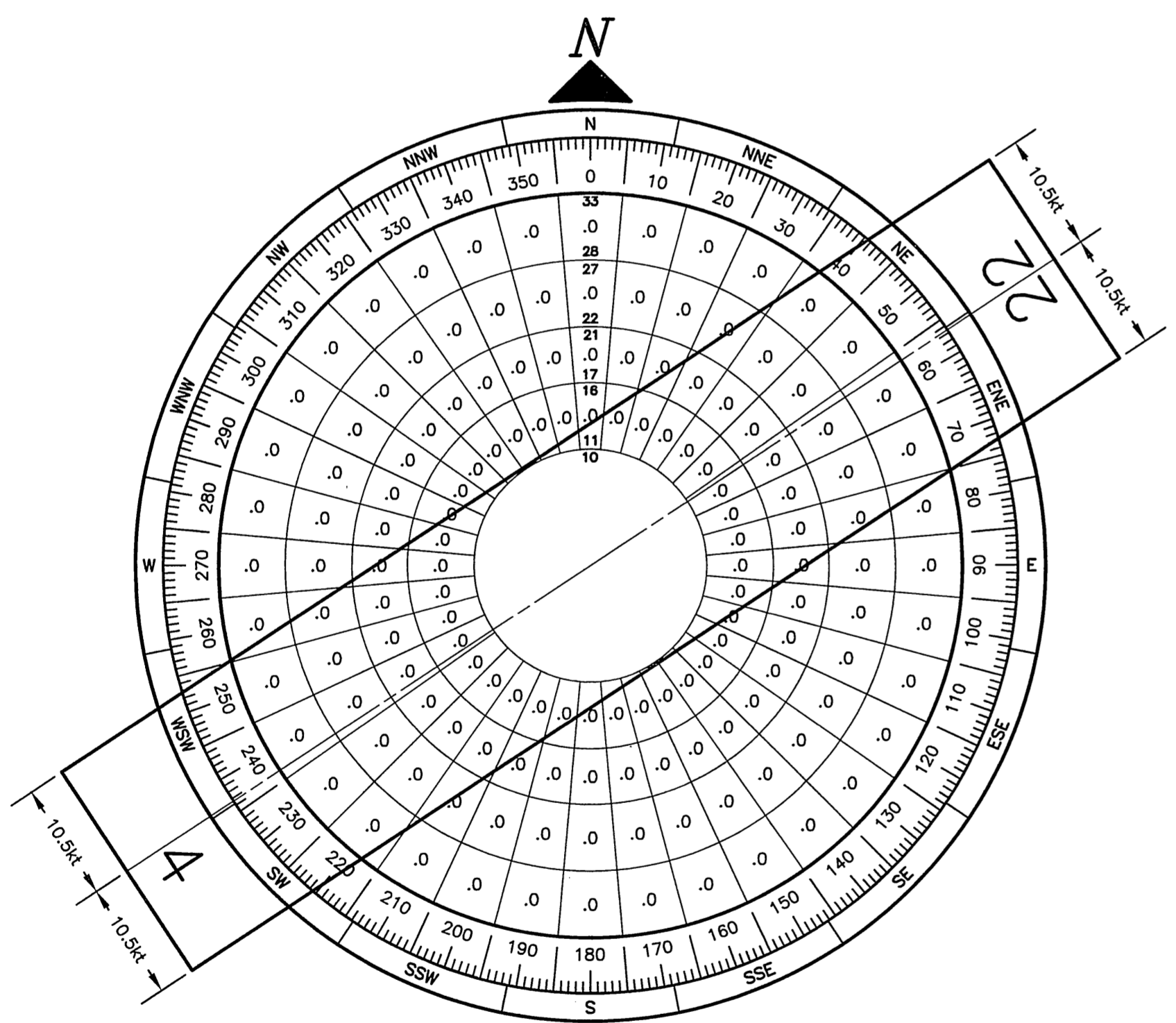
GEOGRAPHIC COORDINATES TABLE				
ITEM	EXISTING LATITUDE	EXISTING LONGITUDE	ULTIMATE LATITUDE	ULTIMATE LONGITUDE
ARP	60°29'03"N	149°43'22"W		
THRESHOLD RW 4	60°28'57.39"N	149°43'40.76"W		
THRESHOLD RW 22	60°29'09.31"N	149°43'04.12"W		

AIRPORT DATA		
ITEM	EXISTING	ULTIMATE
ICAO IDENTIFIER	NONE	
NATIONAL AIRPORT IDENTIFIER	JLA	
FAA SITE NUMBER	50121.5*A	
AIRPORT ELEVATION NAVD88	466.0'	
AIRPORT REFERENCE CODE	A-1	
MEAN MAX. TEMPERATURE, HOTTEST MONTH	68°F, JULY	
AIRPORT AND TERMINAL NAVIGATION AIDS	NONE	SAME AS EXISTING
TAXIWAY LIGHTING/MARKING	NONE	
OBSTRUCTION SURVEY SOURCE & TYPE	NONE	
MAGNETIC DECLINATION, YEAR, RATE OF CHANGE	18°40'E, 2010, -0°17'(W) / YEAR	

RUNWAY 4/22 DATA				
ITEM	EXISTING	NEAR-TERM	ULTIMATE	
RUNWAY TYPE UTILITY OR OTHER THAN UTILITY	UTILITY			
FAR PART 77 APPROACH CATEGORY (V, NPI, P)	V / V			
APPROACH SURFACES	20:1 / 20:1			
VISIBILITY MINIMUM	1 SM			
RUNWAY SURFACE	GRAVEL			
PAVEMENT STRENGTH SW,DW,DTW,DDTW x1000lbs	N/A			
AIRCRAFT APPROACH CATEGORY	A			
AIRPLANE DESIGN GROUP	I			
MEAN GEODETIC BEARING	N56°38'04.16"E			
EFFECTIVE GRADE	0.45%			
TOUCHDOWN ELEVATION NAVD88 (ESTIMATED)	466' / 466'			
RUNWAY DIMENSIONS	60' x 2200'			
RUNWAY SAFETY AREA (RSA) DIMENSIONS	120' x 2680'			
LENGTH BEYOND R/W END	240' / 240'			
RUNWAY PROTECTION ZONE (RPZ) DIMENSIONS	250' x 450' x 1000'			
RUNWAY OBJECT FREE AREA (OFA) DIMENSIONS	250' x 2680'			
LENGTH BEYOND R/W END OR STOPWAY	240' / 240'			
RUNWAY OBSTACLE FREE ZONE (OFZ) DIMENSIONS	250' x 2600'			
RUNWAY LIGHTING	NONE			
RUNWAY MARKING TYPE	NONE			
RUNWAY VISUAL APPROACH AIDS	NONE			

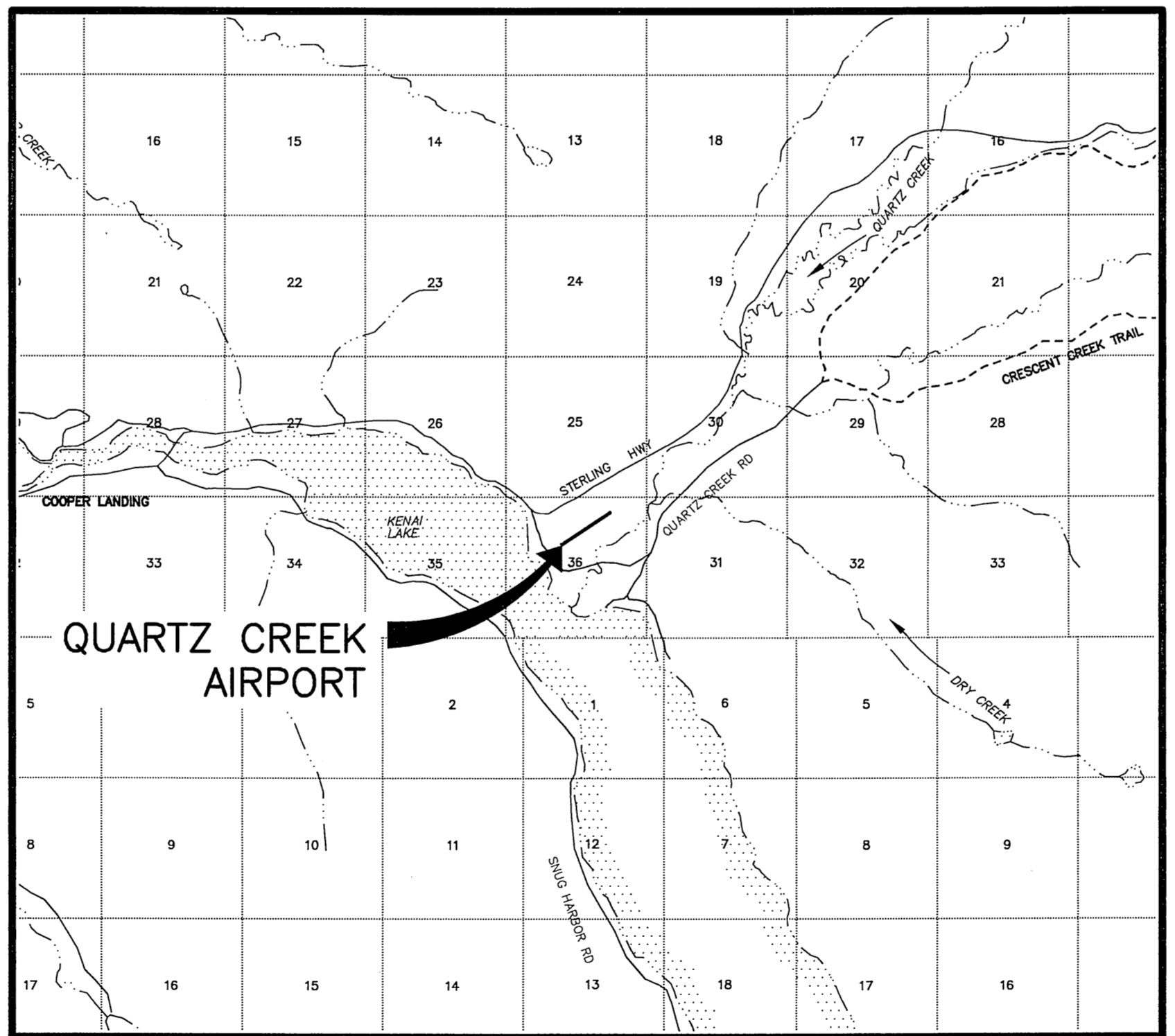
**NOTES**

- NO PRIOR ALP EXISTS FOR THE QUARTZ CREEK AIRPORT.
- THE INFORMATION SHOWN HEREON IS BASED ON A FIELD SURVEY PERFORMED BY DOWL HKM ON JUNE 29, 2010.
- THE HORIZONTAL DATUM IS NAD83 (CORS96) (EPOCH:2003.0000) AS DETERMINED BY STATIC GPS OBSERVATIONS USING LEICA DUAL FREQUENCY GPS RECEIVERS AND PROCESSED USING THE NGS OPUS UTILITY. CONTROL CORS STATIONS USED FOR THE POSITION SOLUTION WERE AB15, KEN5 AND TLKA.
- ELEVATIONS ARE NAV88 ORTHOMETRIC HEIGHTS AS DETERMINED BY GPS OBSERVATIONS AND A HIGH RESOLUTION MODEL, GEOID-99.
- THRESHOLD COORDINATES WERE DETERMINED USING A STATIC GPS NETWORK.



WIND DATA TABLE				
RUNWAY	10.5 kt	13 kt	16 kt	20 kt
4/22				

NOTE: WIND DATA NOT AVAILABLE.  
 SOURCE: NONE  
 PERIOD: NONE



**VICINITY MAP**  
 WITHIN PROTRACTED SECTION 36  
 T5N, R3W, SEWARD MERIDIAN, ALASKA.  
 U.S.G.S. SEWARD (B-7,B-8,C-7,C-8)

DRAWING INDEX	
SHT #	TITLE
1	DATA
2	EXISTING LAYOUT
3	AIRPORT AIRSPACE, 14 CFR, PART 77

BY: DATE: REVISION:	APPROVED: DATE: 7/5/11
	K. KIM RICE, P.E. PRECONSTRUCTION ENGINEER
	RECOMMENDED: DATE: 7/5/2011
	HARVEY M. DOUTY, P.E. DESIGN SECTION CHIEF

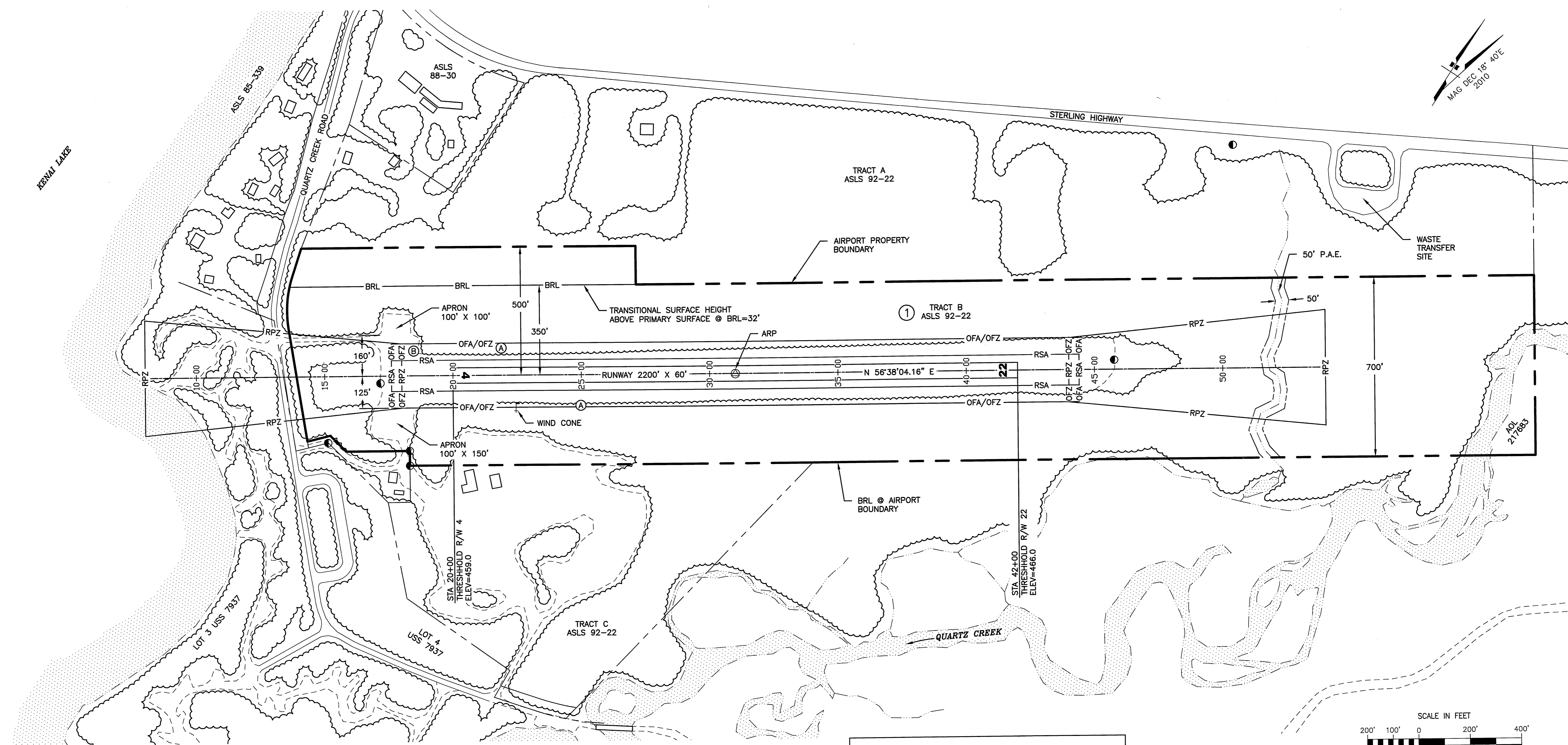
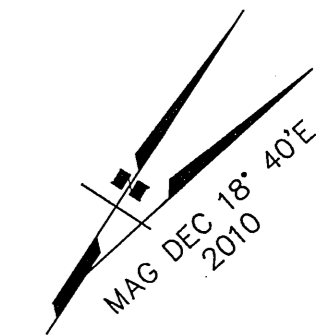
  

STATE OF ALASKA DEPARTMENT OF TRANSPORTATION AND PUBLIC FACILITIES CENTRAL REGION	DATE: 6/15/2011
QUARTZ CREEK AIRPORT QUARTZ CREEK, ALASKA AIRPORT LAYOUT PLAN	SHEET: 1 OF 3
DATA	

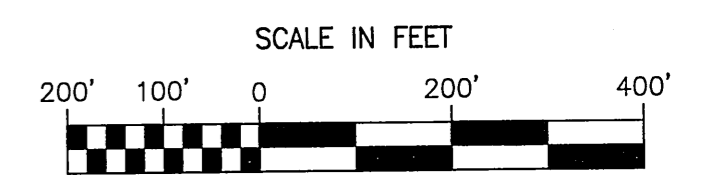
FILE NO.:

Designed By: J. Llewellyn  
 Drawn By: B. Quinn  
 Checked By: B. Quinn

Date Plotted: 6/15/2011, 9:18 AM  
 Layout Name: LAYOUT(2)  
 File Name: P:\Projects\059422\CC QuartzCreek\ALP\ALP-QUARTZ.dwg



● MONUMENT LOCATED DURING JUNE 29, 2010 SITE VISIT.



PROPERTY STATUS							
ID #	INTEREST	GRANTOR	GRANTEE	PARCEL SIZE	DATE ACQUIRED	RECORDED DOC NO.	ACQUIRED AIP NO.
①	I.L.M.A	STATE OF ALASKA, DNR	STATE OF ALASKA, DOT/PF	81.413± ac	08-26-94	UNRECORDED	

BUILDING DATA TABLE				
ID #	DESCRIPTION	STATION/OFFSET	TOP ELEV (NAVD88)	OBSTRUCT MARKING

OFZ PENETRATIONS		
ID #	DESCRIPTION	DISPOSITION
Ⓐ*	GROUND/BRUSH	REMOVE
Ⓑ	GROUND (BERM)	REMOVE

\*ALMOST ENTIRE LENGTH, BOTH SIDES OF RUNWAY.

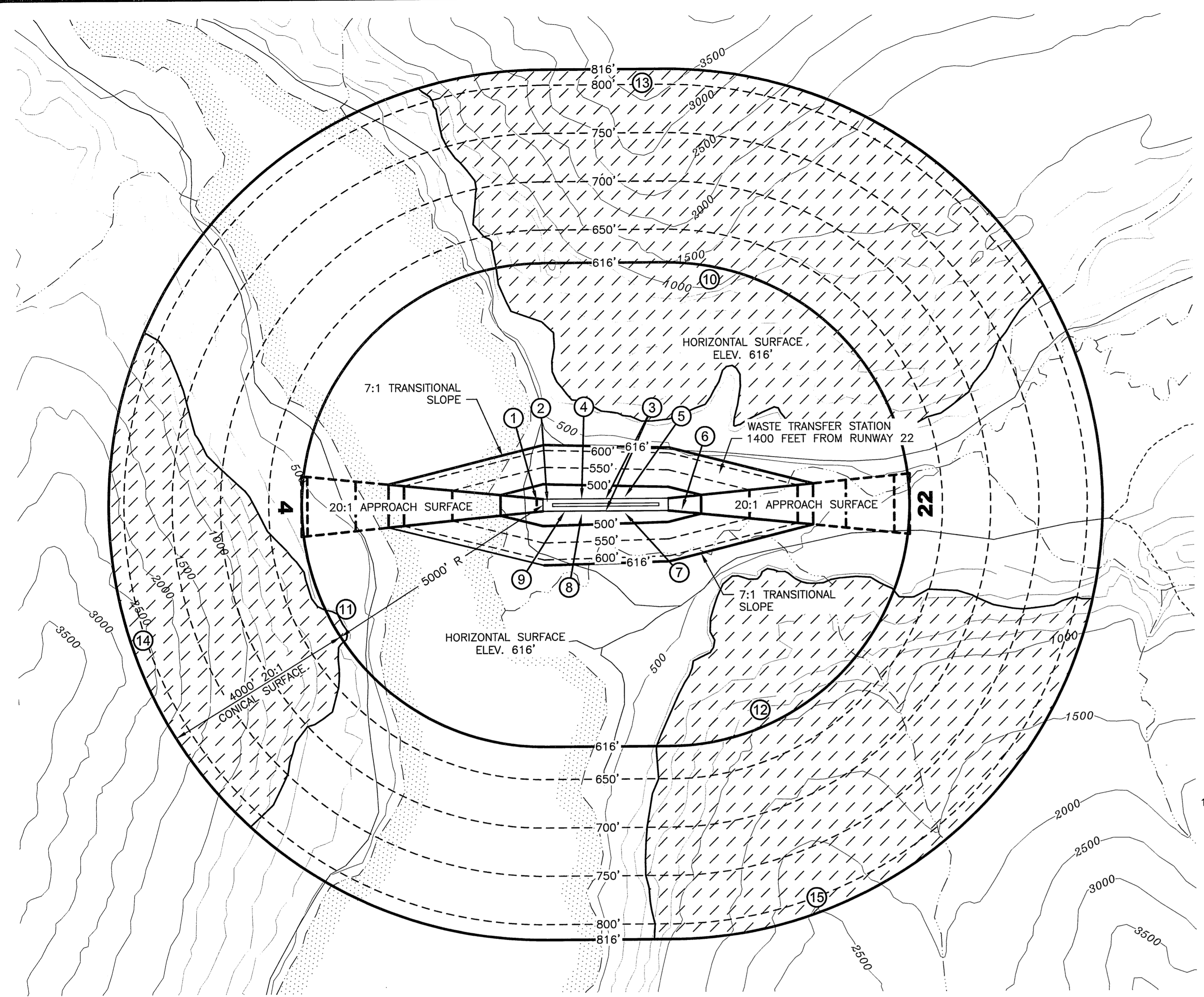
NOTES  
 1. TOPOGRAPHIC CONTOURS ARE NOT AVAILABLE FOR QUARTZ CREEK AIRPORT.

BY	DATE	REVISION

**QUARTZ CREEK AIRPORT**  
 QUARTZ CREEK, ALASKA  
 AIRPORT LAYOUT PLAN  
 EXISTING LAYOUT

DATE: 6/15/2011  
 SHEET: 2 OF 3

Date Plotted: 6/15/2011, 9:18 AM  
 Project Name: P:\Projects\05942216\QuartzCreek\ALP\ALP-QUARTZ.dwg  
 File Name:  
 Designed By: nilewellin  
 Drawn By: boquin  
 Checked By: blanson



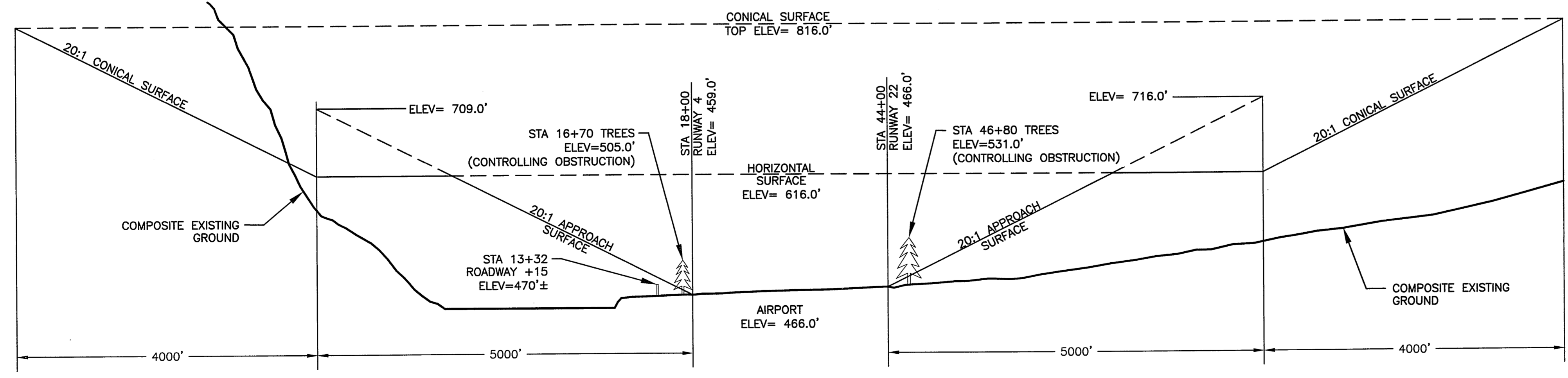
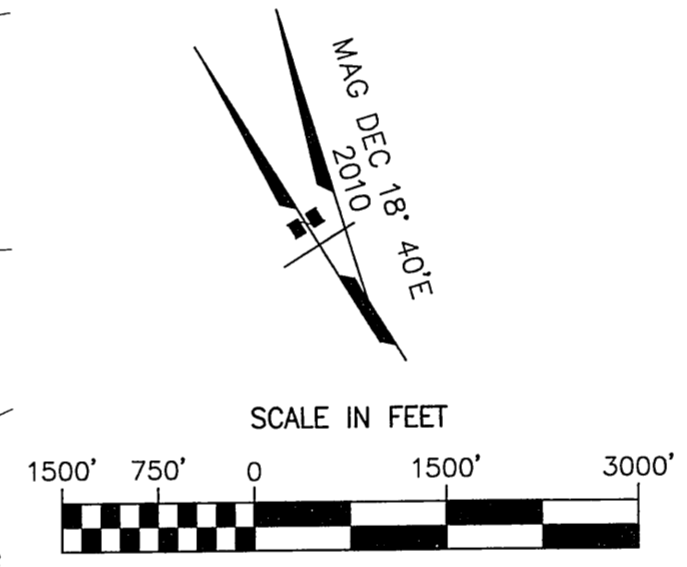
**RUNWAY 4/22**

PART 77 SURFACE OBSTRUCTIONS TABLE								
ID #	DESCRIPTION	STATION/OFFSET	ELEVATION	SURFACE PENETRATED	SURFACE ELEVATION	AMOUNT PENETRATION	DISPOSITION	STAGE TO CORRECT
1	TREES**	16+70/96L	505	APPROACH R/W/4	466	40	REMOVE	FUTURE
2	GROUND	18+90/70L	465 TO 469	PRIMARY	459	6 TO 10	REMOVE	FUTURE
3	GROUND/BRUSH	*/80	462 TO 481	PRIMARY	459 TO 466	3 TO 15	REMOVE	FUTURE
4	TREE**	26+00/133L	526	TRANSITIONAL	463	63	REMOVE	FUTURE
5	TREE**	35+00/165L	525	TRANSITIONAL	470	55	REMOVE	FUTURE
6	TREES**	46+80/108R	531	APPROACH R/W 22	480	51	REMOVE	FUTURE
7	TREE**	35+00/177R	528	TRANSITIONAL	471	57	REMOVE	FUTURE
8	TREE**	26+00/197R	520	TRANSITIONAL	472	48	REMOVE	FUTURE
9	WINDCONE	22+45/140R	479	TRANSITIONAL	462	17	REMAIN	
10***	TERRAIN	45+00/4850R	616	HORIZONTAL	1250	634	REMAIN	
11***	TERRAIN	-24+43/2400R	616	HORIZONTAL	625	9	REMAIN	
12***	TERRAIN	63+00/4325R	616	HORIZONTAL	990	374	REMAIN	
13***	TERRAIN	40+00/8850R	800	CONICAL	3500	2700	REMAIN	
14***	TERRAIN	-65+00/2800R	800	CONICAL	2500	1700	REMAIN	
15***	TERRAIN	74+15/8260R	816	CONICAL	2500	1684	REMAIN	

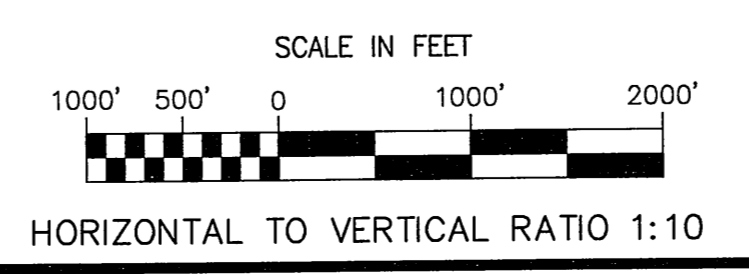
\* BOTH SIDES, ALMOST ENTIRE LENGTH OF PRIMARY SURFACE.  
 \*\* HIGHEST MEASURED FEATURE IN VEGETATED AREA; REFER TO BRUSHLINE EXTENTS ON LAYOUT.

**NOTES**

- AIRPORT ELEVATION IS 466.0'.
- PRIMARY SURFACE WIDTH IS 250'.
- TOPO CONTOURS ARE SHOWN IN FEET. BASEMAP DATA FROM USGS SEWARD (B-8).
- A RANGEFINDER WITH BUILT-IN INCLINOMETER WAS USED TO IDENTIFY OBSTRUCTIONS CLOSE TO THE RUNWAY IN THE PRIMARY AND TRANSITIONAL SURFACES.
- APPROACH SURFACES ARE 20:1, BEGINNING 200' BEYOND THE THRESHOLDS.
- THE RUNWAY 4 CONTROLLING OBSTRUCTION IS A GROUP OF TREES AT STATION 16+70, 96' LT OF RUNWAY CENTERLINE. THE OBSTRUCTION CLEARANCE SLOPE IS ESTABLISHED AS 7:1, PER FAA AC 150-5200-35, SECTION 4, DATA ELEMENT NUMBER 57.
- THE RUNWAY 4 APPROACH END SITING SURFACES DO NOT MEET ANY THRESHOLD SITING CRITERIA BECAUSE OF TREES PENETRATIONS AS DEFINED IN FAA AC 150/5300-13, CHG 15, APPENDIX 2, TABLE A2-1.
- THE RUNWAY 22 CONTROLLING OBSTRUCTION IS A GROUP OF TREES AT STATION 46+80, 108' RT OF RUNWAY CENTERLINE. THE OBSTRUCTION CLEARANCE SLOPE IS ESTABLISHED AS 7:1, PER FAA AC 150-5200-35, SECTION 4, DATA ELEMENT NUMBER 57.
- THE RUNWAY 22 APPROACH END SITING SURFACES DO NOT MEET ANY THRESHOLD SITING CRITERIA BECAUSE OF TREE PENETRATIONS AS DEFINED IN FAA AC 150/5300-13, CHG 15, APPENDIX 2, TABLE A2-1.
- THERE ARE NO KNOWN ORDINANCES SPECIFYING HEIGHT RESTRICTIONS IN COOPER LANDING, THE UNINCORPORATED COMMUNITY ASSOCIATED WITH THE QUARTZ CREEK AIRPORT.
- THE WASTE TRANSFER SITE IS LOCATED 1400' FROM RUNWAY 22. THERE IS NO SEWAGE DISPOSAL SITE OR WASTEWATER LAGOON IN COOPER LANDING.



**RUNWAY PROFILE**



<b>QUARTZ CREEK AIRPORT</b> QUARTZ CREEK, ALASKA AIRPORT LAYOUT PLAN		DATE: 6/15/2011
AIRPORT AIRSPACE 14 CFR, PART 77		SHEET: 3 OF 3
BY	DATE	REVISION