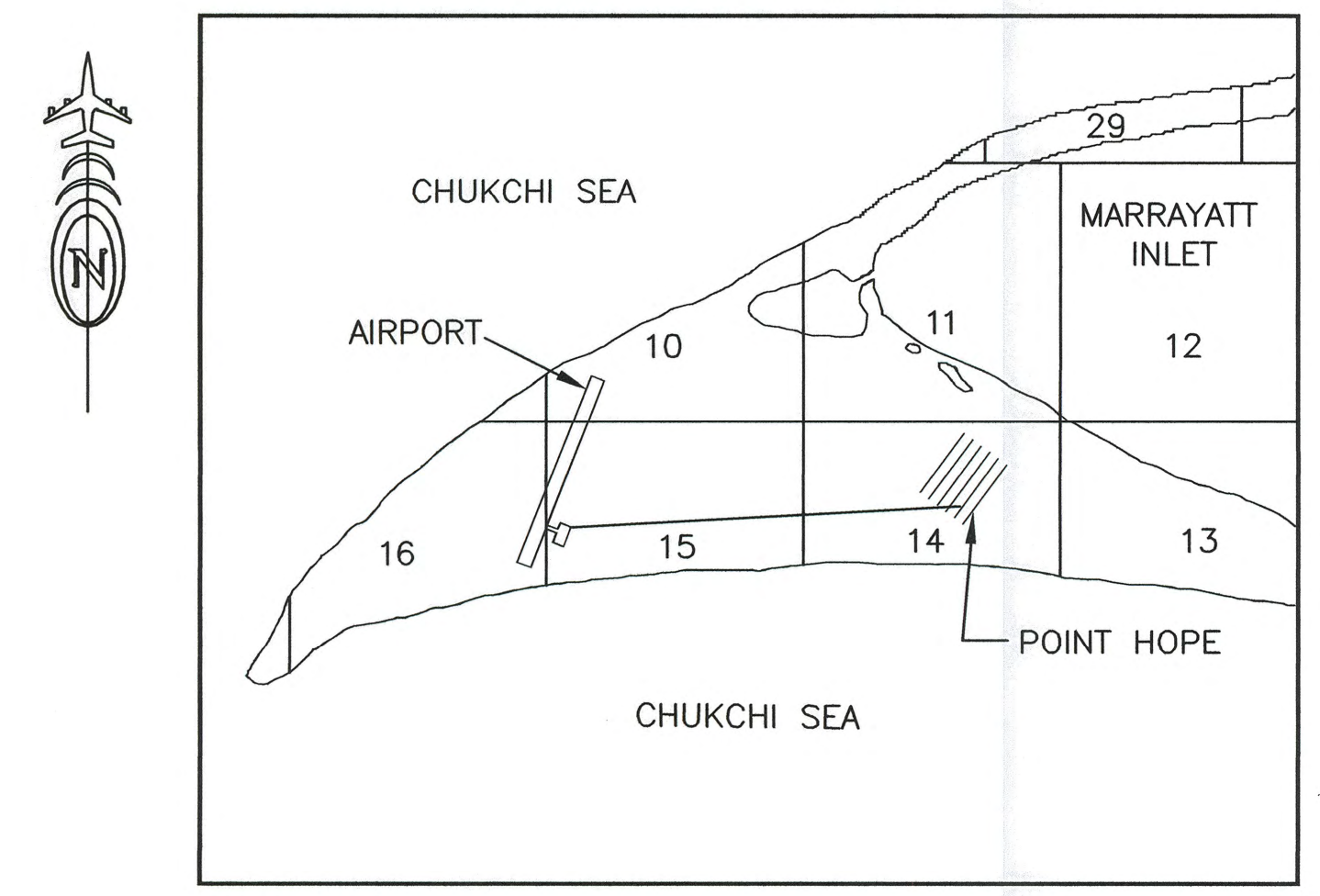
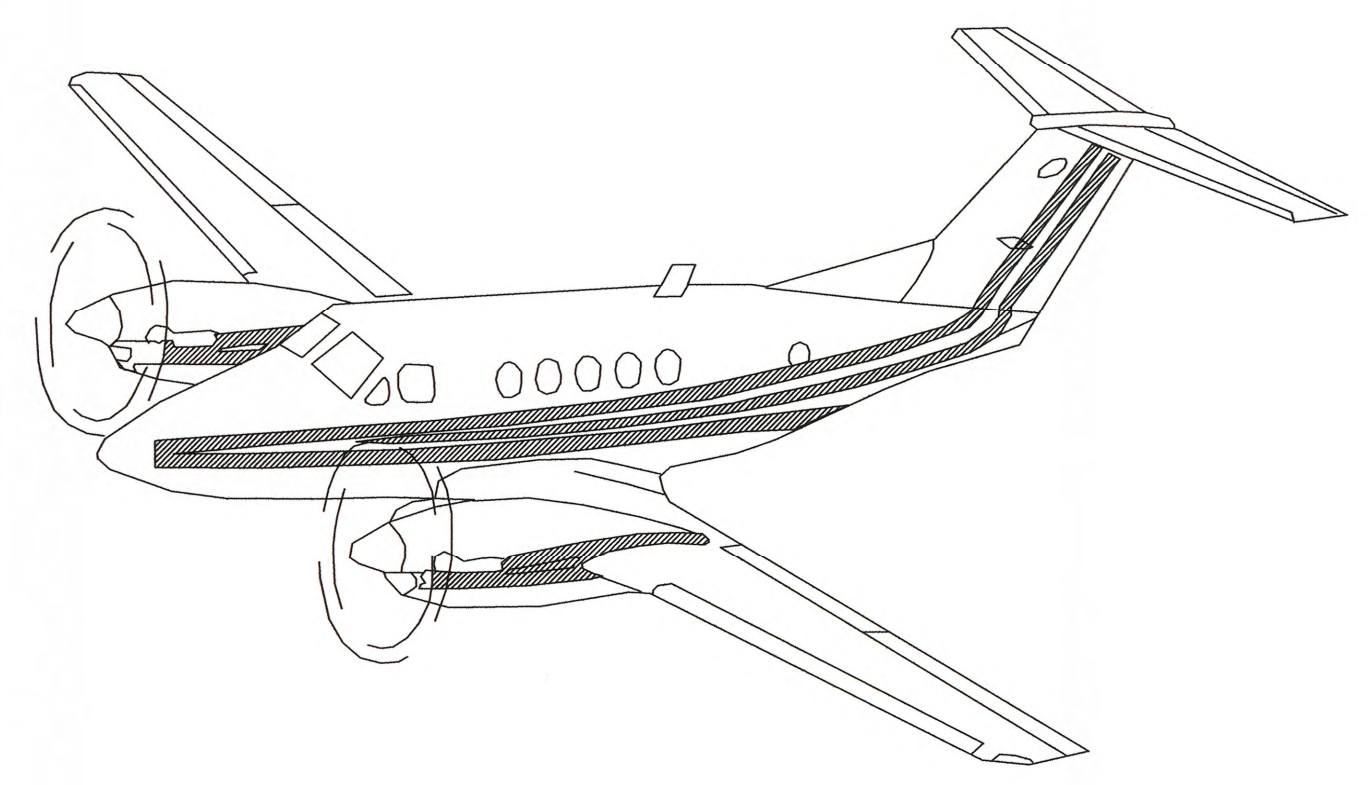


POINT HOPE AIRPORT AIRPORT LAYOUT PLAN POINT HOPE, ALASKA



VICINITY MAP
PROTRACTED T34N, SEC. 10, 15, & 16
R35W KATEEL RIVER MERIDIAN,
ALASKA USGS PT. HOPE (B-3)

LEGEND		
	EXISTING	ULTIMATE
PROPERTY LINE	---	---
BUILDING RESTRICTION LINE (B.R.L.)	---BRL---	---BRL---
THRESHOLD LIGHTS	***	ooo
WIND CONE & SEGMENTED CIRCLE	(Symbol)	(Symbol)
ROADWAYS	==	==
AIRPORT REFERENCE POINT	(Symbol)	(Symbol)
PAPI	(Symbol)	(Symbol)
REIL	(Symbol)	(Symbol)
ANTENNA/TOWERS	(Symbol)	(Symbol)
VASI	(Symbol)	(Symbol)
AWOS	(Symbol)	(Symbol)
AIRPORT BEACON	(Symbol)	(Symbol)
EASEMENT LINE	---	---
	SHORELINE/WATERLINE	(Symbol)
	LUMINAIRE	(Symbol)
	SURVEY MONUMENT	(Symbol)
	POWER LINE	(Symbol)
	TELEPHONE LINE	(Symbol)
	EXISTING BUILDING	(Symbol)

SHEET INDEX		
SHEET NO.	DESCRIPTION	REVISION DATE
1	COVER SHEET	
2	AIRPORT DATA	
3	EXISTING AIRPORT LAYOUT PLAN	
4	ULTIMATE AIRPORT LAYOUT PLAN	
5	EXISTING INNER APPROACH - RUNWAY 01	
6	EXISTING INNER APPROACH - RUNWAY 19	
7	ULTIMATE INNER APPROACH - RUNWAY 03	
8	ULTIMATE INNER APPROACH - RUNWAY 21	
9	AIRPORT AIRSPACE, 14 CFR, PART 77	
10	AIRPORT LAND USE	
11-12	ALP PROPERTY MAP	

DESIGN TCK
DRAWN TCK
CHECKED JGL

STATE OF ALASKA
DEPARTMENT OF TRANSPORTATION AND PUBLIC FACILITIES
NORTHERN REGION-AVIATION

APPROVED: *Albert M.L. Beck* DATE 9/14/18
ALBERT M.L. BECK, P.E. PROJECT DELIVERY LEAD

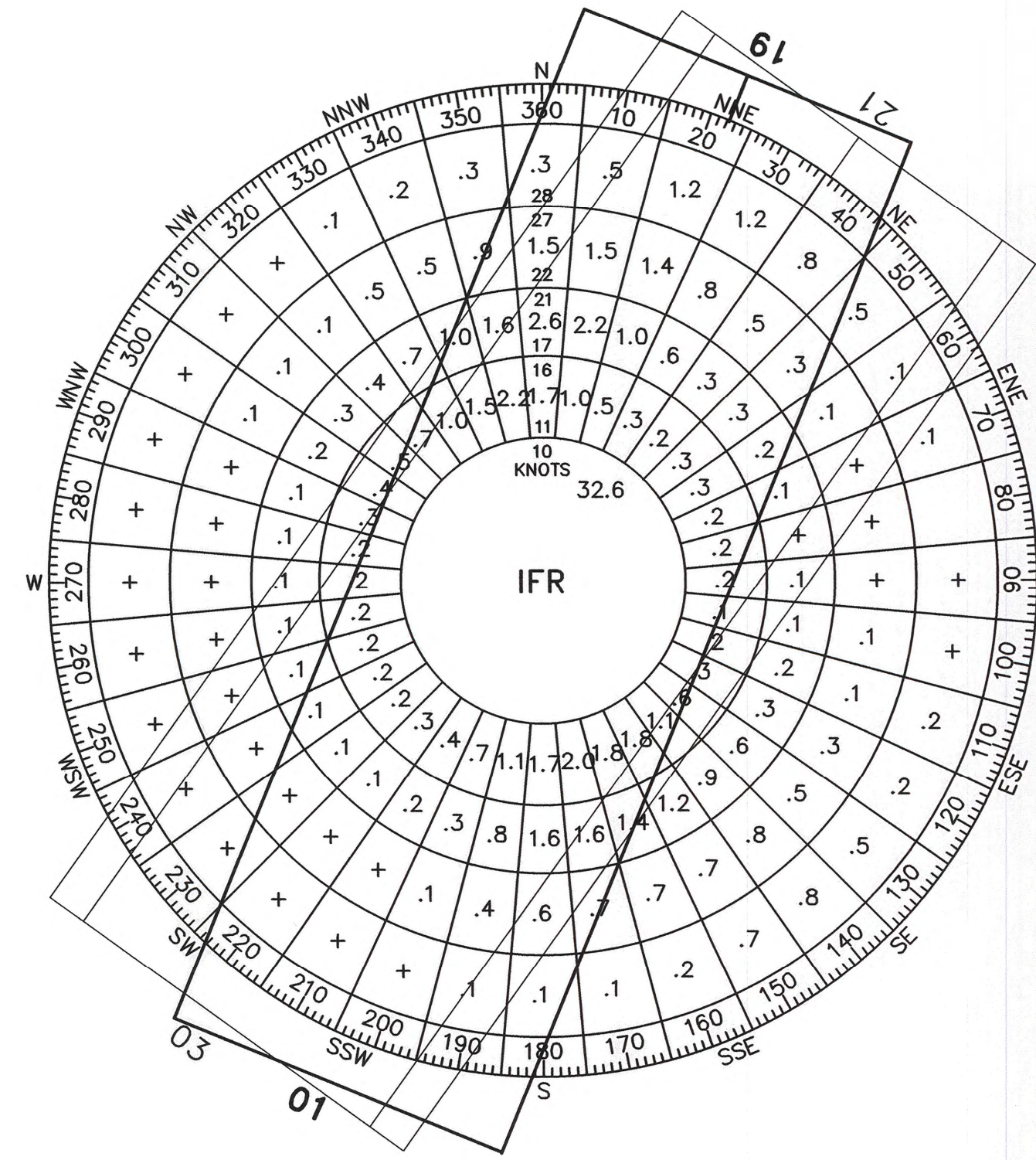
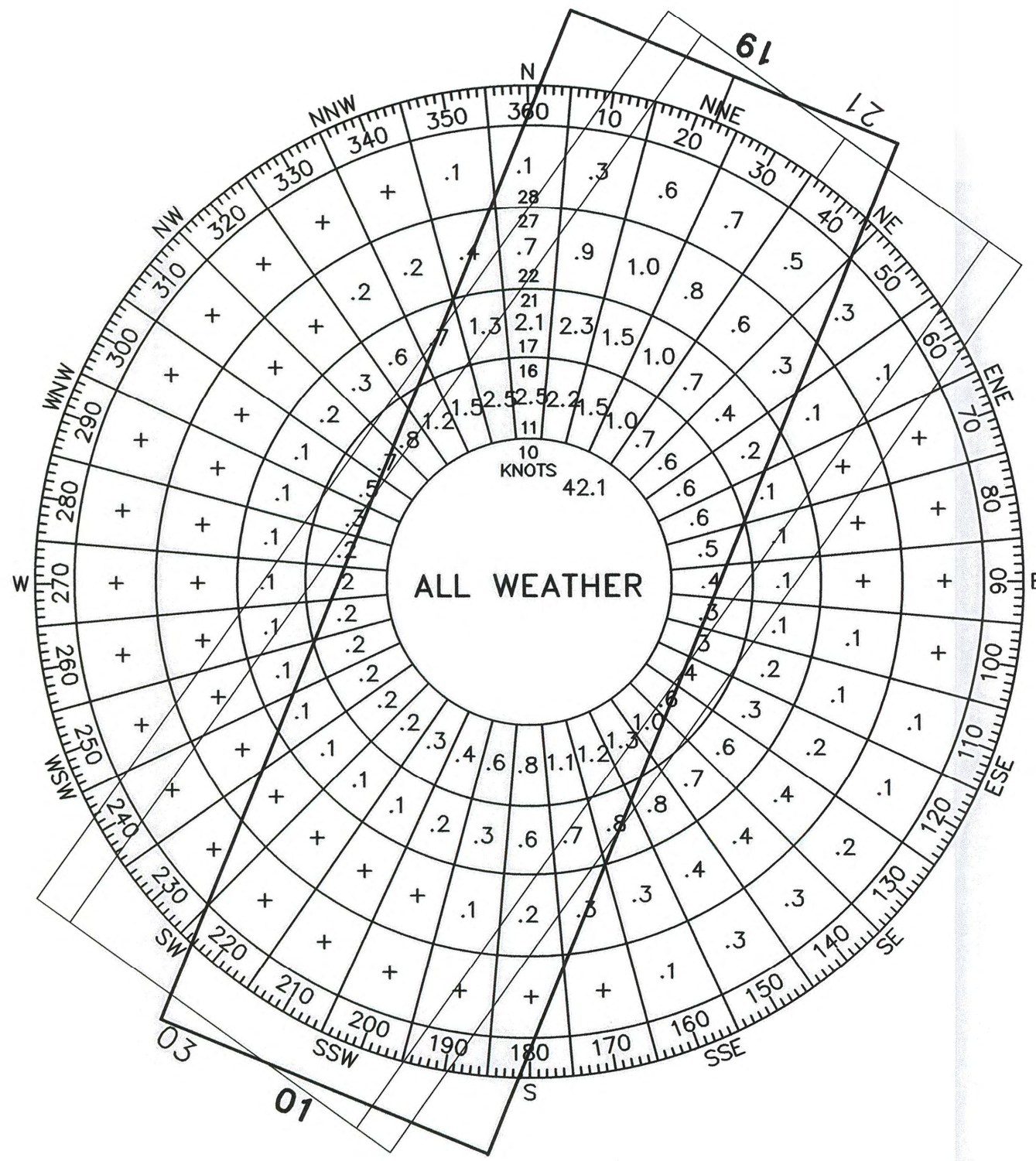
AIRPORT LAYOUT PLAN CONDITIONAL APPROVAL SUBJECT TO
ALP APPROVAL LETTER DATED 9/24/2018
FAA AIRSPACE REVIEW NUMBER: 2017-AAL-248-NRA

Kathleen C. Moss DATE 9/24/2018
FAA, AIRPORTS DIVISION ALASKAN REGION, AAL-612

BY	DATE	REVISIONS

POINT HOPE AIRPORT
POINT HOPE, ALASKA
COVER SHEET

SHEET 1 OF 12



WIND DATA		
RUNWAY	EXISTING 01/19	ULTIMATE 03/21
CROSSWIND COMPONENT	13 KNOTS	13 KNOTS
ALL WEATHER WIND COVERAGE	86.38%	82.17%
IFR WIND COVERAGE	81.37%	73.53%

SOURCE: NCDC ISH/ISD
STATION NAME: POINT HOPE AIRPORT
PERIOD: 2007 - 2016

MODIFICATION TO STANDARDS				
DESCRIPTION	STANDARD	EXISTING	ULTIMATE	APPROVAL DATE
NONE REQUIRED				

NON-STANDARD CONDITIONS			
ITEM	STANDARD	EXISTING	ULTIMATE
LANDFILL SEPARATION	10000'	1550'	1550'
RPZ	1000' x 500' x 700'	1700' x 500' x 1010'	1700' x 1000' x 1510'
RUNWAY SAFETY AREA WIDTH	150'	120'	150'
RUNWAY SAFETY AREA LENGTH BEYOND RW ENDS	300'	200'/20'	300'

TAXIWAY DATA TABLE		
ITEM	EXISTING	ULTIMATE
TAXIWAY DESIGN GROUP (TDG)	TDG-3	TDG-2
TAXIWAY WIDTH	75'	35'
TAXIWAY SAFETY AREA (TSA) WIDTH	95'	79'
TAXIWAY OBJECT FREE AREA (TOFA) WIDTH	162'	131'
TAXIWAY MARKING	CENTERLINE	CENTERLINE
TAXIWAY LIGHTING	MITL	MITL

GEOGRAPHIC COORDINATES (NAD 83) & ELEVATION (NAVD 88)						
ITEM	EXISTING LATITUDE	EXISTING LONGITUDE	EXISTING ELEVATION	ULTIMATE LATITUDE	ULTIMATE LONGITUDE	ULTIMATE ELEVATION
AIRPORT REFERENCE POINT	68°20'55.58"N	166°47'57.34"W	N/A	68°20'53.26"N	166°47'56.86"W	N/A
THRESHOLD RW 01	68°20'37.41"N	166°48'17.50"W	18.3'	N/A	N/A	N/A
THRESHOLD RW 19	68°21'13.75"N	166°47'37.18"W	18.3'	N/A	N/A	N/A
THRESHOLD RW 03	N/A	N/A	N/A	68°20'37.28"N	166°48'27.93"W	19.45'
THRESHOLD RW 21	N/A	N/A	N/A	68°21'09.25"N	166°47'25.78"W	19.45'

AIRPORT DATA TABLE		
ITEM	EXISTING	ULTIMATE
ICAO IDENTIFIER	PAP0	PAP0
NATIONAL AIRPORT IDENTIFIER	PHO	PHO
FAA SITE NUMBER	50601.*A	50601.*A
AIRPORT REFERENCE CODE (ARC)	B-II	B-II
NPIAS SERVICE LEVEL (P, CS, R, GA)	CS	CS
AASP CLASSIFICATION	COMMUNITY OFF-ROAD	COMMUNITY OFF-ROAD
MEAN MAX TEMP, HOTTEST MONTH	58°F, JULY	58°F, JULY
OBSTRUCTION SURVEY SOURCE & TYPE	FAA WAAS	FAA WAAS & GROUND SURVEY
AIRPORT ELEVATION (NAVD88)	18.7'	20.7'
AIRPORT AND TERMINAL NAVIGATION AIDS	AIRPORT BEACON, NDB, GPS	AIRPORT BEACON, NDB, GPS
MISCELLANEOUS FACILITIES	LIGHTED WIND CONE, SEGMENTED CIRCLE, AWOS-3P	LIGHTED WIND CONE, SEGMENTED CIRCLE, AWOS-3P
MAGNETIC DECLINATION, YEAR, RATE OF CHANGE	8°42'E, 2020, 0°31' W/YEAR	8°42'E, 2020, 0°31' W/YEAR

MAGNETIC DECLINATION SOURCE: NOAA NATIONAL GEOPHYSICAL DATA CENTER
OBSTRUCTION SURVEY SOURCE: FAA AGIS, WHPACIFIC, 12/01/2011

RUNWAY DATA TABLE		
ITEM	EXISTING	ULTIMATE
RUNWAY IDENTIFICATION	01/19	03/21
TRUE MEAN BEARING	N 22.28° E	N 35.68° E
RUNWAY DESIGN CODE (RDC)	B-II-5000	B-II-4000
APPROACH REFERENCE CODE (APRC)	B/II/5000	B/II/4000
DEPARTURE REFERENCE CODE (DPRC)	B/II	B/II
CRITICAL AIRCRAFT	BEECH 1900	BEECH 1900
RUNWAY SURFACE	ASPHALT, GROOVED	ASPHALT, GROOVED
PAVEMENT STRENGTH (SW, DW; x1000 LBS.)	120, 150	120, 150
PAVEMENT STRENGTH BY PCN	98/F/A/X/T	98/F/A/X/T
EFFECTIVE GRADIENT	0.01%*	0.03%*
RUNWAY DIMENSIONS	75' x 3992'	75' x 4000'
RUNWAY SAFETY AREA (RSA) DIMENSIONS	120' x 4212'	150' x 4600'
RSA LENGTH BEYOND RW ENDS	200' / 20'	300' / 300'
RUNWAY LIGHTING	MIRL	MIRL
RUNWAY PROTECTION ZONE (RPZ) APPROACH	1700' x 500' x 1010'	1700' x 1000' x 1510'
RUNWAY PROTECTION ZONE (RPZ) DEPARTURE	1000' x 500' x 700'	1000' x 500' x 700'
RUNWAY MARKING TYPE (P, NP, NONE)	NP	NP
RUNWAY OBJECT FREE AREA (ROFA)	500' x 4212'	500' x 4600'
ROFA LENGTH BEYOND RW ENDS	200' / 20'	300'
RUNWAY OBSTACLE FREE ZONE (ROFZ)	400' x 4392'	400' x 4400'
FAR PART 77 APPROACH SLOPE	34:1	34:1
APPROACH TYPE	NON-PRECISION	NON-PRECISION
THRESHOLD SITTING SURFACE (TSS)	20:1, NO TSS PENETRATIONS	20:1, NO TSS PENETRATIONS
DEPARTURE SURFACE SLOPE	YES, 40:1	YES, 40:1
14 CFR PART 77 APPROACH CATEGORY	OTHER THAN UTILITY	OTHER THAN UTILITY
VISIBILITY MINIMUMS	N.L.T. 1 S.M.	N.L.T. 3/4 S.M.
TYPE OF AERONAUTICAL SURVEY REQUIRED	VERTICALLY GUIDED	VERTICALLY GUIDED
VISUAL AND INSTRUMENT NAVAIDS	VASI, NDB, RNAV(GPS), LPV	PAPI, NDB, RNAV(GPS), LPV, REL
MAXIMUM ELEVATION (NAVD 88)	18.7'	20.7'
TOUCHDOWN ZONE ELEVATION	18.7' / 18.7'	20.7' / 20.7'
VERTICAL AND HORIZONTAL DATUM	NAVD88 / NAD83	NAVD88 / NAD83

*MEETS LINE OF SIGHT REQUIREMENTS

DESIGN TCK
DRAWN TCK
CHECKED JGL

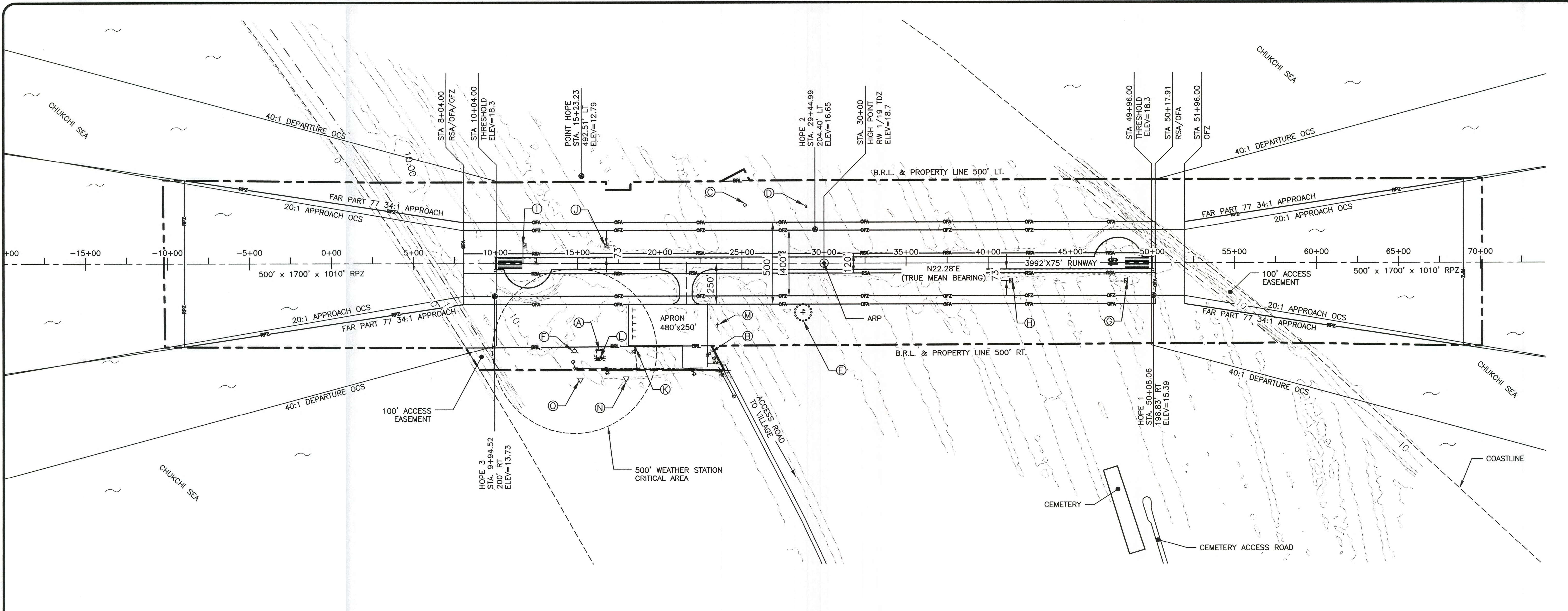
STATE OF ALASKA
DEPARTMENT OF TRANSPORTATION AND PUBLIC FACILITIES
NORTHERN REGION-AVIATION
APPROVED: *Albert M.L. Beck* DATE 9/14/18
ALBERT M.L. BECK, P.E. PROJECT DELIVERY LEAD

BY	DATE	REVISIONS	FAA

BY	DATE	REVISIONS	FAA

POINT HOPE AIRPORT
POINT HOPE, ALASKA
AIRPORT DATA

SHEET
2 OF
12

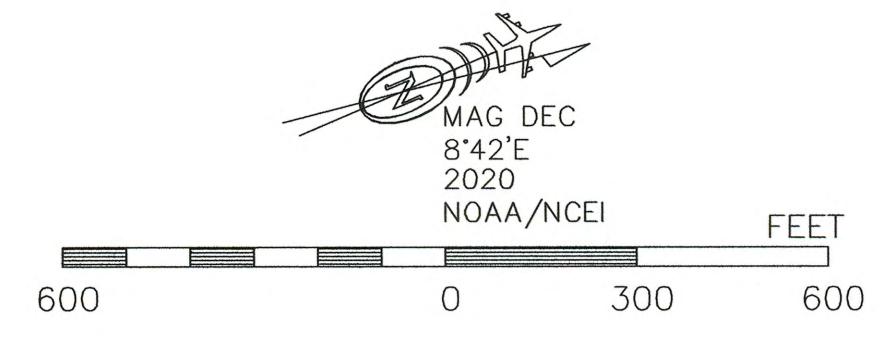


BUILDING/FACILITIES

BLD/FAC	DESCRIPTION	STATION/OFFSET	TOP ELEV. (MSL)
(A)	SREB	STA. 16+36.71/529' RT	42.3'
(B)	ELECTRIC EQUIPMENT BLDG	STA. 23+05.37/545' RT	25.1'
(C)	ABANDONED HOUSE	STA. 25+17.96/344' LT	26.5'
(D)	ABANDONED HOUSE	STA. 28+91.76/335' LT	24.5'
(E)	LIGHTED WIND CONE & SEGMENTED CIRCLE	STA. 28+71.17/302' RT	35.5'
(F)	WEATHER STATION	STA. 14+81.96/532' RT	49.6'
(G)	VASI RW 19 (DOWNWIND)	STA. 48+48.36/110' RT	21.2'
(H)	VASI RW 19 (UPWIND)	STA. 41+50.28/110' RT	21.3'
(I)	VASI RW 01 (DOWNWIND)	STA. 11+67.44/110' LT	20.2'
(J)	VASI RW 01 (UPWIND)	STA. 16+65.22/110' LT	20.4'
(K)	EMERGENCY FUEL TANK	STA. 18+52.07/507' RT	20.3'
(L)	AIRPORT BEACON	STA. 16+35/580' RT	APPROX. 45'
(M)	PROTECTED GRAVE SITE	STA. 23+52.29/363' RT	16.3'
(N)	NDB TOWER (NORTH)	STA. 17+94.38/690' RT	73.9'
(O)	NDB TOWER (SOUTH)	STA. 15+16.10/698' RT	74.3'

NOTES:

1. THE GEODETIC COORDINATES WERE CALCULATED FROM SURVEY CONTROL TIES TO TRI STATION "POINT HOPE."
2. RUNWAY LOW POINT LOCATED AT RW 19 THRESHOLD.
3. EXISTING RUNWAY TO BE OBLITERATED AFTER ULTIMATE CONSTRUCTION.
4. AIRSPACE OBSTRUCTION SURVEY, SOURCE: FAA AGIS WHPACIFIC, 12/01/2011.
5. FAR PART 77 APPROACH SURFACE = 200x500x3500x10000 @ 34:1 (OTHER THAN UTILITY RW WITH NPI APPROACH N.L.T. 1 S.M.)
6. TSS RUNWAY TYPE 4 = 200x400x3800x10000 @ 20:1



DESIGN TCK
DRAWN TCK
CHECKED JGL

STATE OF ALASKA
DEPARTMENT OF TRANSPORTATION AND PUBLIC FACILITIES
NORTHERN REGION-AVIATION

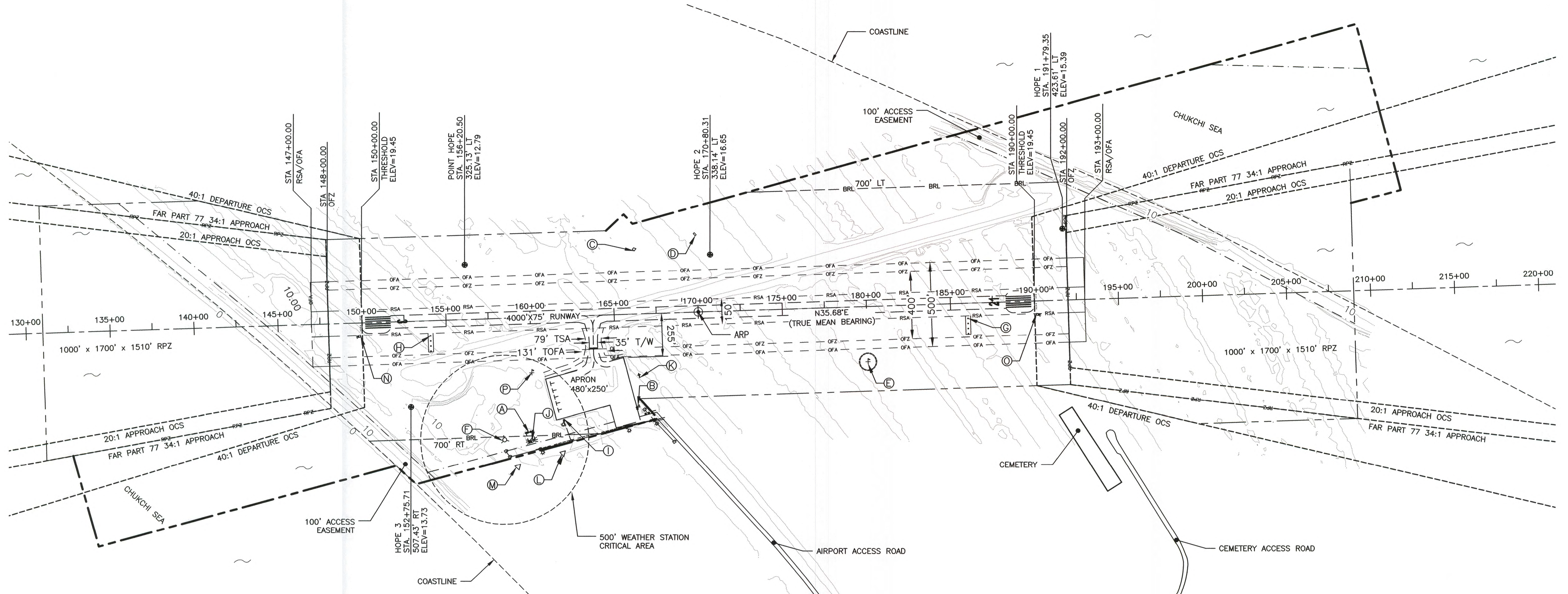
APPROVED: *Albert M.L. Beck* DATE 9/14/18
ALBERT M.L. BECK, P.E. PROJECT DELIVERY LEAD

BY	DATE	REVISIONS	FAA

BY	DATE	REVISIONS	FAA

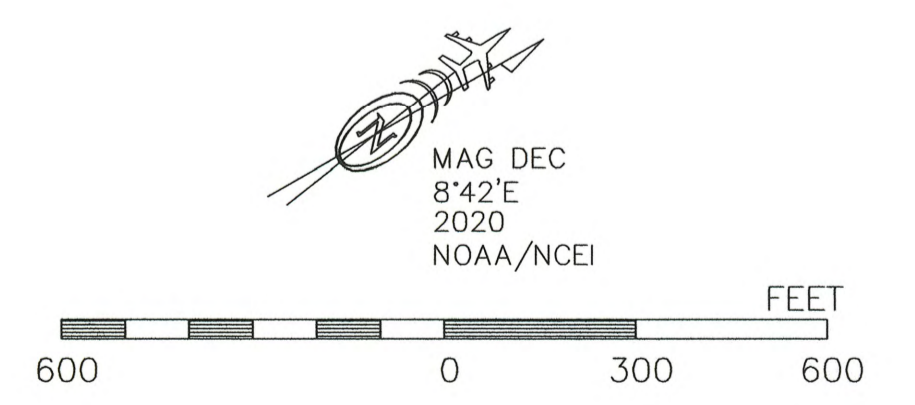
POINT HOPE AIRPORT
POINT HOPE, ALASKA
EXISTING AIRPORT LAYOUT PLAN

SHEET 3 OF 12



BUILDING/FACILITIES			
BLD/FAC	DESCRIPTION	STATION/OFFSET	TOP ELEV. (MSL)
(A)	SREB	STA. 159+95.03/675' RT	42.3'
(B)	ELECTRIC EQUIPMENT BLDG	STA. 166+33.36/538' RT	25.1'
(C)	ABANDONED HOUSE	STA. 166+30.32/374' LT	26.5'
(D)	ABANDONED HOUSE	STA. 169+95.96/452' LT	24.5'
(E)	LIGHTED WIND CONE & SEGMENTED CIRCLE	STA. 180+00/327' RT	35.5'
(F)	WEATHER STATION	STA. 158+26.37/718' RT	49.6'
(G)	PAPI RW 21	STA. 186+02/90' RT	19.8'
(H)	PAPI RW 03	STA. 154+06/90' RT	19.4'
(I)	EMERGENCY FUEL TANK	STA. 161+83.94/607' RT	20.3'
(J)	AIRPORT BEACON	STA. 159+88/729' RT	APPROX. 45'
(K)	PROTECTED GRAVE SITE	STA. 166+35.40/351' RT	16.3'
(L)	NDB TOWER (NORTH)	STA. 161+84.81/795' RT	73.9'
(M)	NDB TOWER (SOUTH)	STA. 159+15.76/866' RT	74.3'
(N)	REIL RW 03	STA. 149+90/77.5' RT/LT	21.1'
(O)	REIL RW 21	STA. 190+10/77.5' RT/LT	21.1'
(P)	LIGHTED WIND CONE	STA. 160+00/327' RT	35.5'

- NOTES:**
- THE GEODETIC COORDINATES WERE CALCULATED FROM SURVEY CONTROL TIES TO TRI STATION "POINT HOPE."
 - AIRSPACE OBSTRUCTION SURVEY, SOURCE: FAA AGIS WHPACIFIC, 12/01/2011.
 - FAR PART 77 APPROACH SURFACE = 200x1000x4000x10000 @ 34:1 (OTHER THAN UTILITY RW WITH NPI APPROACH N.L.T. 3/4 S.M.)
 - TSS RUNWAY TYPE 6 = 200x800x3800x10000 @ 20:1



DESIGN TCK
 DRAWN TCK
 CHECKED JGL

STATE OF ALASKA
 DEPARTMENT OF TRANSPORTATION AND PUBLIC FACILITIES
 NORTHERN REGION-AVIATION

APPROVED: *Albert M.L. Beck*
 ALBERT M.L. BECK, P.E.

DATE: 7/14/18
 PROJECT DELIVERY LEAD

BY	DATE	REVISIONS	FAA

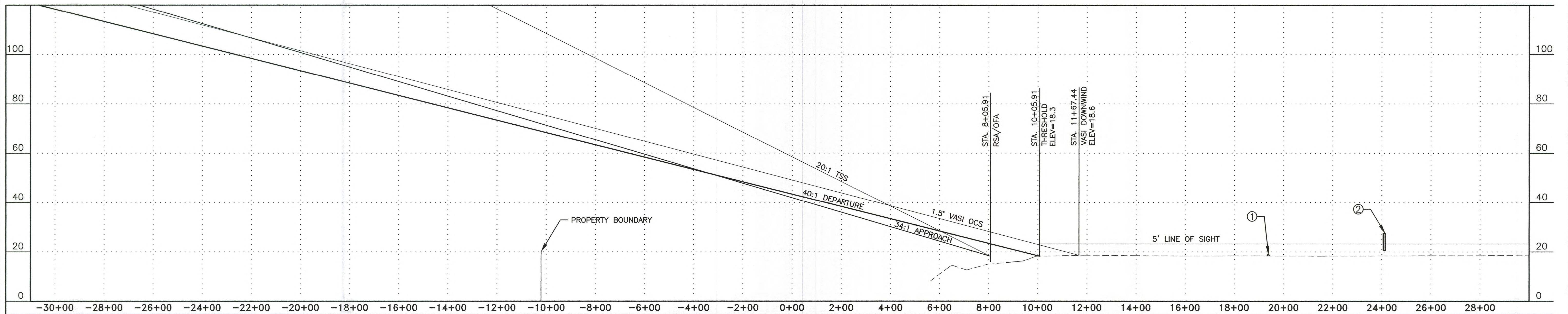
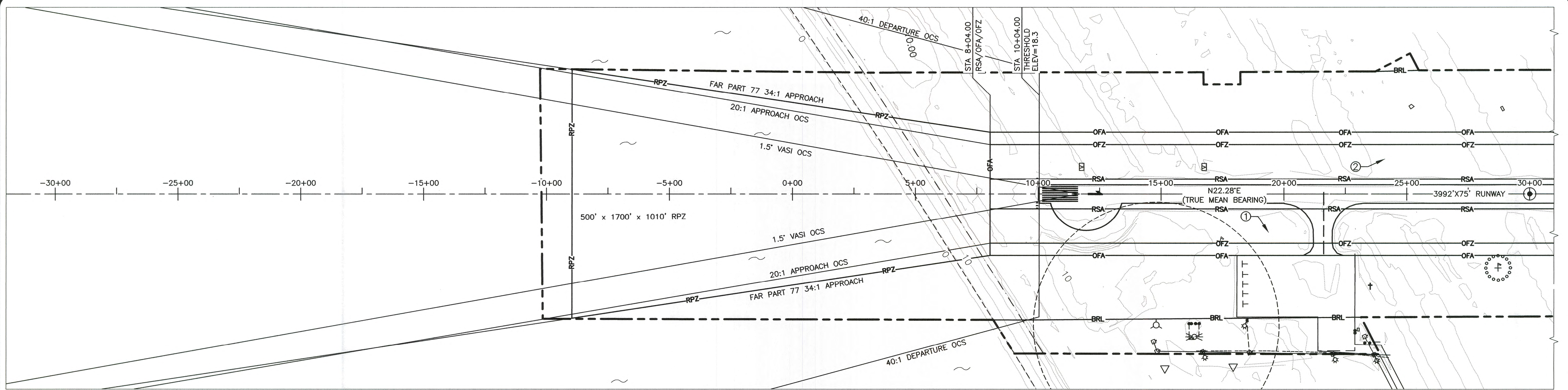
BY	DATE	REVISIONS	FAA

POINT HOPE AIRPORT
 POINT HOPE, ALASKA
 ULTIMATE AIRPORT LAYOUT PLAN

SHEET
 4 OF
 12

7/23/2018 9:29 AM

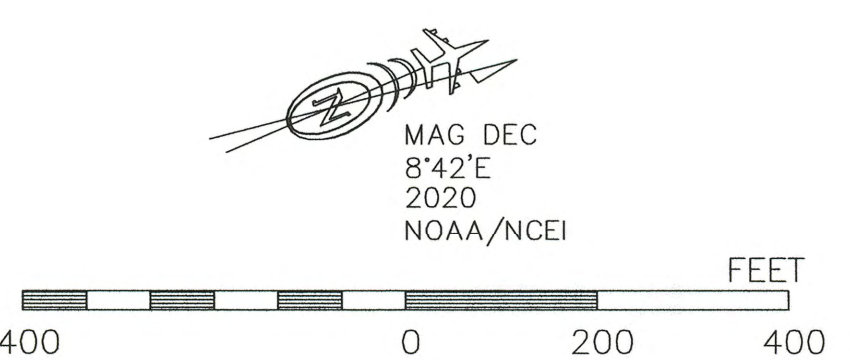
U:\2047060600\drawing-dip-2014\c\sheets\2047060600_pho_dip_sheet_01-10_2014-EXISTING INNER APPROACH - RUNWAY 01



PART 77 SURFACE OBSTRUCTION TABLE (INNER PORTION RW 01)								
ID #	DESCRIPTION	STATION/OFFSET	ELEV. (FT)	SURFACE PENETRATED	SURFACE ELEVATION	AMOUNT PENETRATED	DISPOSITION	STAGE TO CORRECT
①	NATURAL HIGH POINT	19+37.4/155.23R	18.95	PRIMARY	18.70	0.25	REMOVE	ULTIMATE
②	BOAT STAND	24+10.22/140.81L	26.68	PRIMARY	18.70	7.98	REMOVE	ULTIMATE

40:1 DEPARTURE SURFACE PENETRATIONS (RW 19)								
ID #	DESCRIPTION	STATION/OFFSET	ELEV.	SURFACE PENETRATED	SURFACE ELEVATION	AMOUNT PENETRATED	DISPOSITION	STAGE TO CORRECT
	NONE							

20:1 THRESHOLD SITING SURFACE PENETRATIONS (RW 01)								
ID #	DESCRIPTION	STATION/OFFSET	ELEV.	SURFACE PENETRATED	SURFACE ELEVATION	AMOUNT PENETRATED	DISPOSITION	STAGE TO CORRECT
	NONE							



DESIGN TCK
 DRAWN TCK
 CHECKED JGL

STATE OF ALASKA
 DEPARTMENT OF TRANSPORTATION AND PUBLIC FACILITIES
 NORTHERN REGION-AVIATION

APPROVED: Albert M.L. Beck DATE 9/14/18
 ALBERT M.L. BECK, P.E. PROJECT DELIVERY LEAD

BY	DATE	REVISIONS	FAA

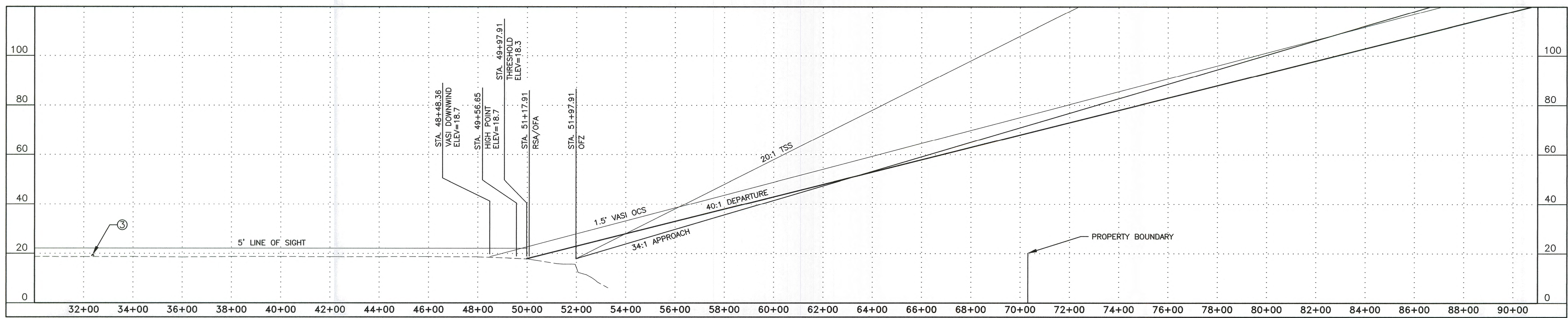
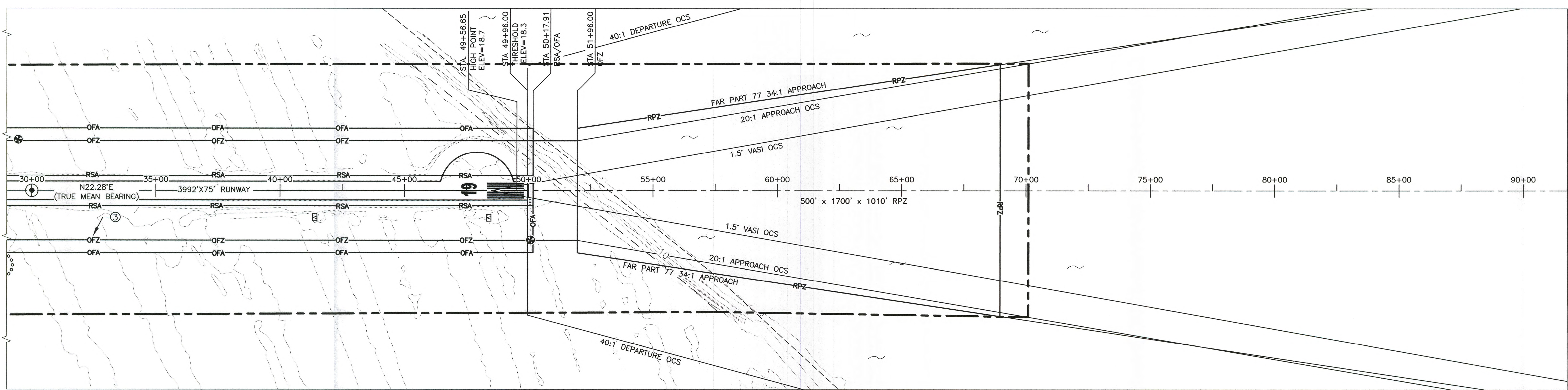
BY	DATE	REVISIONS	FAA

POINT HOPE AIRPORT
 POINT HOPE, ALASKA
 EXISTING INNER APPROACH - RUNWAY 01

SHEET
 5 OF 12

7/23/2018 9:29 AM

U:\2047060600\drawing-clip-2014\c\sheets\2047060600_pho_clip_sheet_01-10_2014-EXISTING INNER APPROACH - RUNWAY 19



PART 77 SURFACE OBSTRUCTION TABLE (INNER PORTION RW 19)

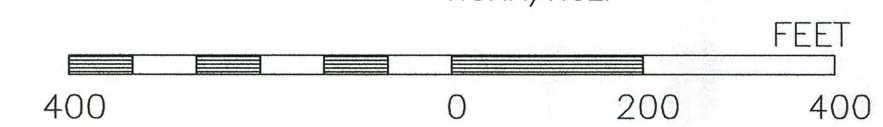
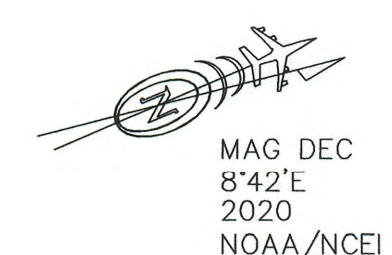
ID #	DESCRIPTION	STATION/OFFSET	ELEV.	SURFACE PENETRATED	SURFACE ELEVATION	AMOUNT PENETRATED	DISPOSITION	STAGE TO CORRECT
③	VEGETATION	32+47.9/182.52R	19.68	PRIMARY	18.70	0.98	REMOVE	ULTIMATE

20:1 THRESHOLD SITING SURFACE PENETRATIONS (RW 19)

ID #	DESCRIPTION	STATION/OFFSET	ELEV.	SURFACE PENETRATED	SURFACE ELEVATION	AMOUNT PENETRATED	DISPOSITION	STAGE TO CORRECT
	NONE							

40:1 DEPARTURE SURFACE PENETRATIONS (RW 01)

ID #	DESCRIPTION	STATION/OFFSET	ELEV.	SURFACE PENETRATED	SURFACE ELEVATION	AMOUNT PENETRATED	DISPOSITION	STAGE TO CORRECT
	NONE							



DESIGN TCK
 DRAWN TCK
 CHECKED JGL

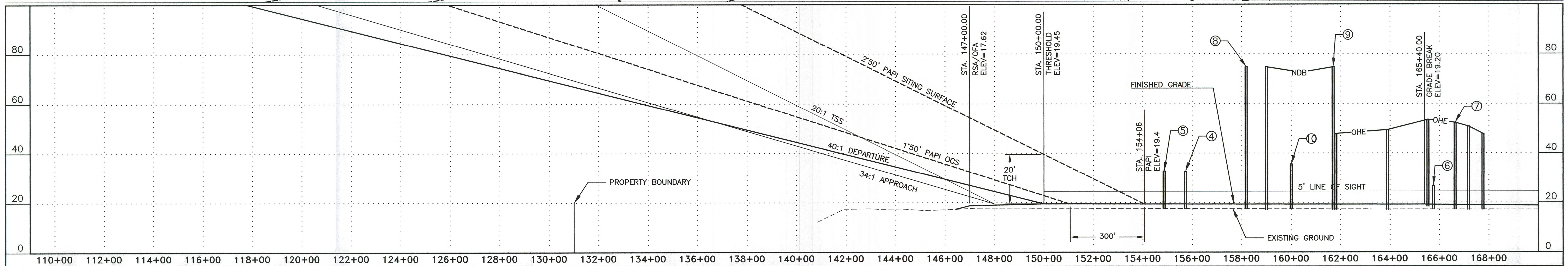
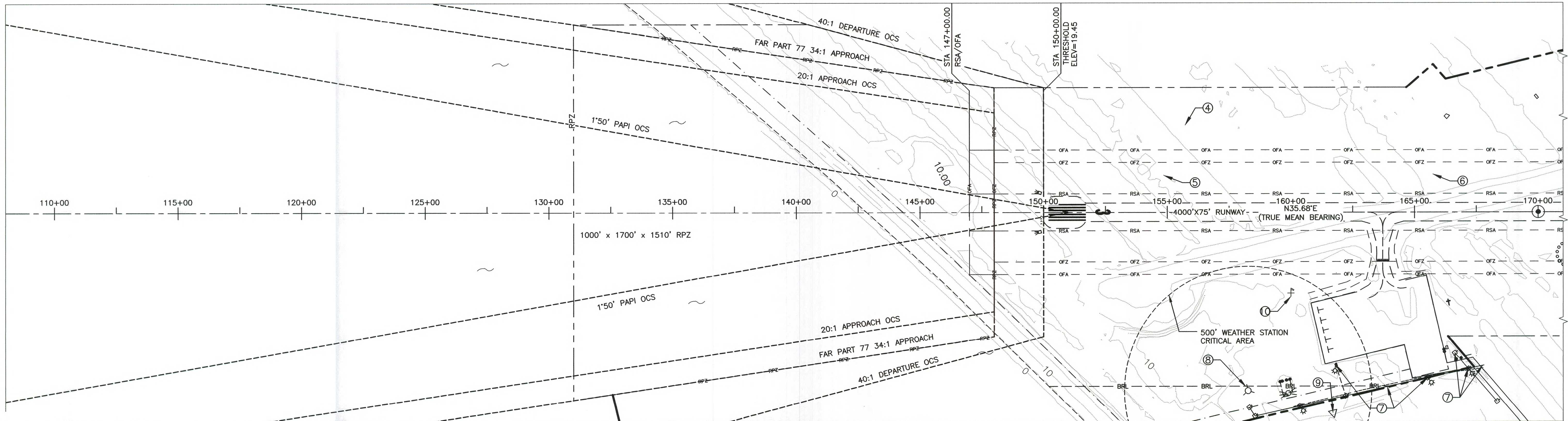
STATE OF ALASKA
 DEPARTMENT OF TRANSPORTATION AND PUBLIC FACILITIES
 NORTHERN REGION-AVIATION
 APPROVED: *Albert M.L. Beck*
 ALBERT M.L. BECK, P.E.
 DATE: 9/14/18
 PROJECT DELIVERY LEAD

BY	DATE	REVISIONS	FAA

BY	DATE	REVISIONS	FAA

POINT HOPE AIRPORT
 POINT HOPE, ALASKA
 EXISTING INNER APPROACH - RUNWAY 19

SHEET 6 OF 12



PART 77 SURFACE OBSTRUCTION TABLE (INNER PORTION RW 03)

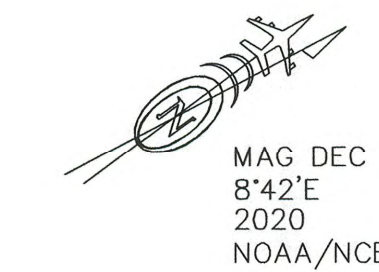
ID #	DESCRIPTION	STATION/ OFFSET	ELEV.	SURFACE PENETRATED	SURFACE ELEVATION	AMOUNT PENETRATED	DISPOSITION	STAGE TO CORRECT
④	VERTICAL STRUCTURE	155+72.41/350.80L	32.6	PRIMARY	19.4	13.2	REMOVE	ULTIMATE
⑤	VERTICAL STRUCTURE	154+86.01/148.76L	32.7	PRIMARY	19.4	13.3	REMOVE	ULTIMATE
⑥	BOAT STAND	165+74.45/152.28L	26.7	PRIMARY	19.3	7.4	REMOVE	ULTIMATE
⑦	UTILITY POLES & OVERHEAD ELECTRIC	MULTIPLE	52.3	TRANSITIONAL	28.7	23.6	TO REMAIN	N/A
⑧	WEATHER STATION ANTENNA	158+17.71/702.00R	51.6	TRANSITIONAL	48.2	3.4	EXIST. OBST. LIGHTING	N/A
⑨	NDB TOWERS	161+70.2/809.1R	74.7	TRANSITIONAL	63.4	11.3	EXIST. OBST. LIGHTING	N/A
⑩	LIGHTED WIND CONE	160+00/327R	35.5	PRIMARY	19.3	16.2	OBST. LIGHTING	ULTIMATE

20:1 THRESHOLD SITING SURFACE PENETRATIONS (RW 03)

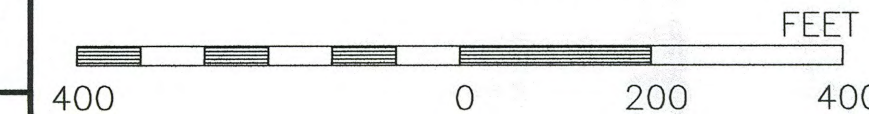
ID #	DESCRIPTION	STATION/ OFFSET	ELEV.	SURFACE PENETRATED	SURFACE ELEVATION	AMOUNT PENETRATED	DISPOSITION	STAGE TO CORRECT
	NONE							

40:1 DEPARTURE SURFACE PENETRATIONS (RW 21)

ID #	DESCRIPTION	STATION/ OFFSET	ELEV.	SURFACE PENETRATED	SURFACE ELEVATION	AMOUNT PENETRATED	DISPOSITION	STAGE TO CORRECT
	NONE							



MAG DEC 842'E 2020 NOAA/NCEI



DESIGN ICK
DRAWN ICK
CHECKED JGL

STATE OF ALASKA
DEPARTMENT OF TRANSPORTATION AND PUBLIC FACILITIES
NORTHERN REGION-AVIATION
APPROVED: *Albert M.L. Beck* DATE 9/14/18
ALBERT M.L. BECK, P.E. PROJECT DELIVERY LEAD

BY	DATE	REVISIONS	FAA

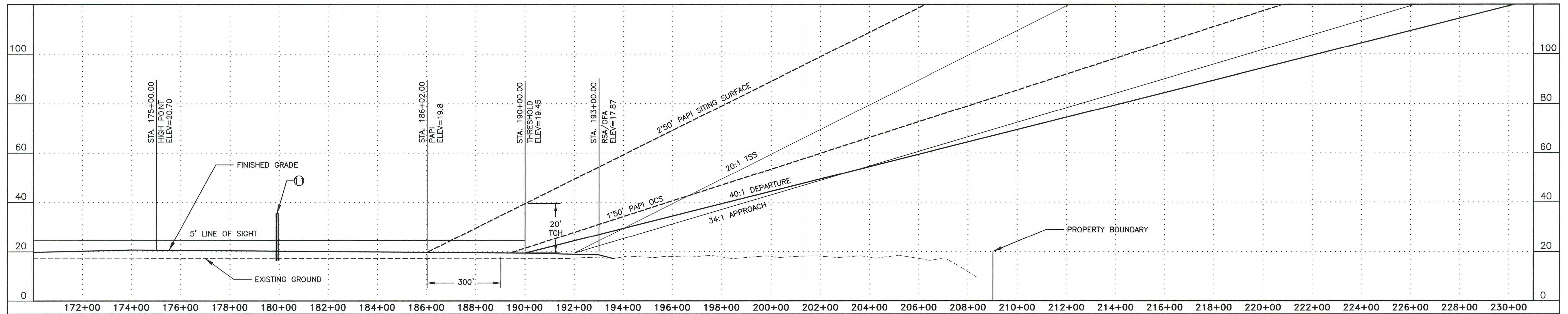
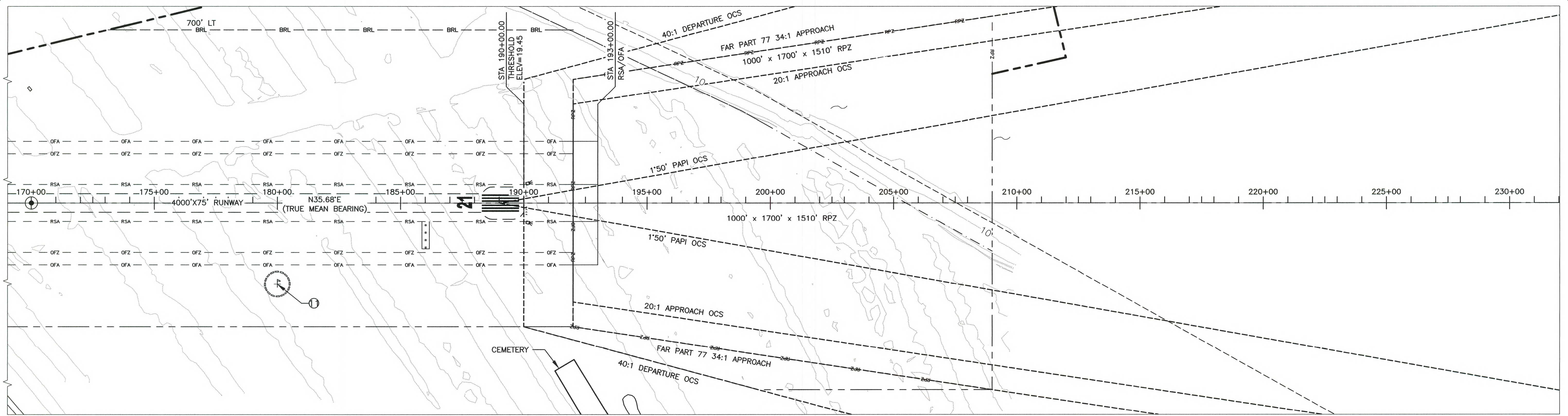
BY	DATE	REVISIONS	FAA

POINT HOPE AIRPORT
POINT HOPE, ALASKA
ULTIMATE INNER APPROACH - RUNWAY 03

SHEET 7 OF 12

7/23/2018 9:29 AM

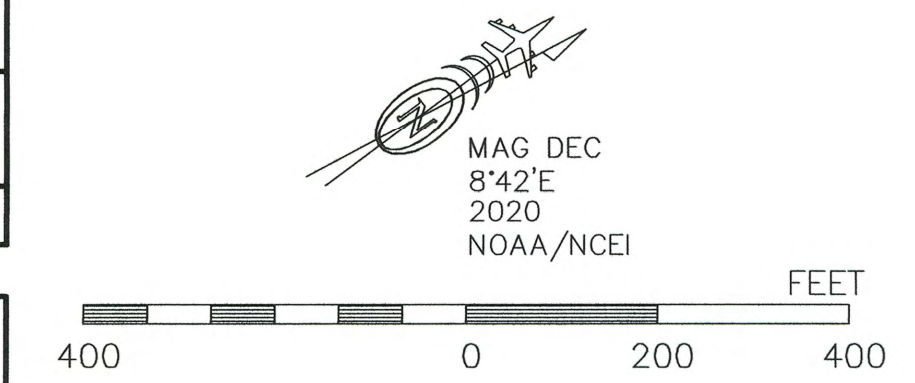
U:\2047060600\drawing-elp-2014\c\sheets\2047060600_pho_dlp_sheet_01-10_2014-ULTIMATE INNER APPROACH - RUNWAY 21



PART 77 SURFACE OBSTRUCTION TABLE (INNER PORTION RW 21)								
ID#	DESCRIPTION	STATION/OFFSET	ELEV.	SURFACE PENETRATED	SURFACE ELEVATION	AMOUNT PENETRATED	DISPOSITION	STAGE TO CORRECT
①	LIGHTED WIND CONE & SEGMENTED CIRCLE	180+00/327R	35.5	PRIMARY	19.3	16.2	OBST. LIGHTING	ULTIMATE

20:1 THRESHOLD SITING SURFACE PENETRATIONS (RW 21)								
ID #	DESCRIPTION	STATION/OFFSET	ELEV.	SURFACE PENETRATED	SURFACE ELEVATION	AMOUNT PENETRATED	DISPOSITION	STAGE TO CORRECT
	NONE							

40:1 DEPARTURE SURFACE PENETRATIONS (RW 03)								
ID #	DESCRIPTION	STATION/OFFSET	ELEV.	SURFACE PENETRATED	SURFACE ELEVATION	AMOUNT PENETRATED	DISPOSITION	STAGE TO CORRECT
	NONE							



DESIGN TCK
DRAWN TCK
CHECKED JGL

STATE OF ALASKA
DEPARTMENT OF TRANSPORTATION AND PUBLIC FACILITIES
NORTHERN REGION-AVIATION
APPROVED: *Albert M.L. Beck* DATE 9/14/18
ALBERT M.L. BECK, P.E. PROJECT DELIVERY LEAD

BY	DATE	REVISIONS	FAA

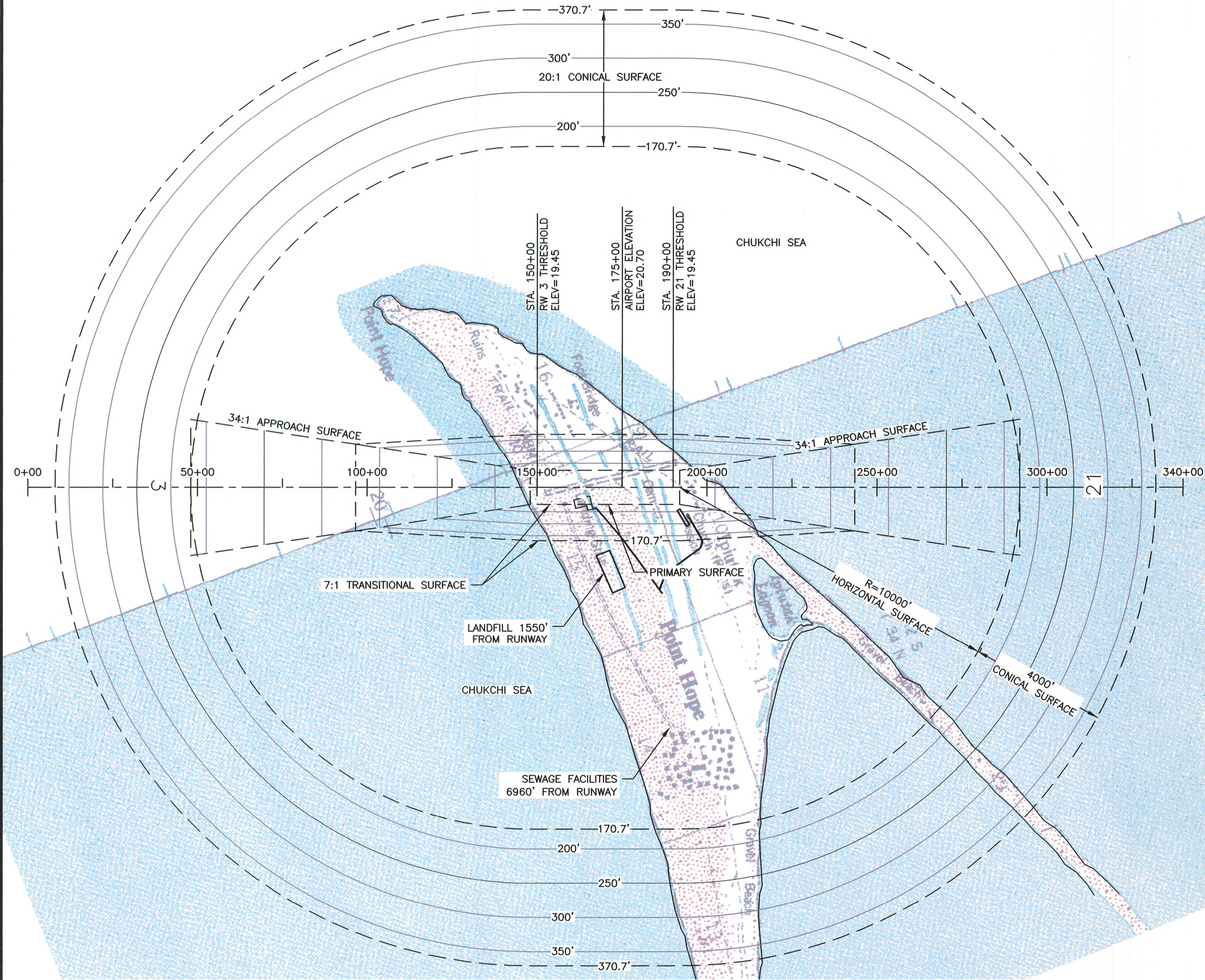
BY	DATE	REVISIONS	FAA

POINT HOPE AIRPORT
POINT HOPE, ALASKA
ULTIMATE INNER APPROACH - RUNWAY 21

SHEET 8 OF 12

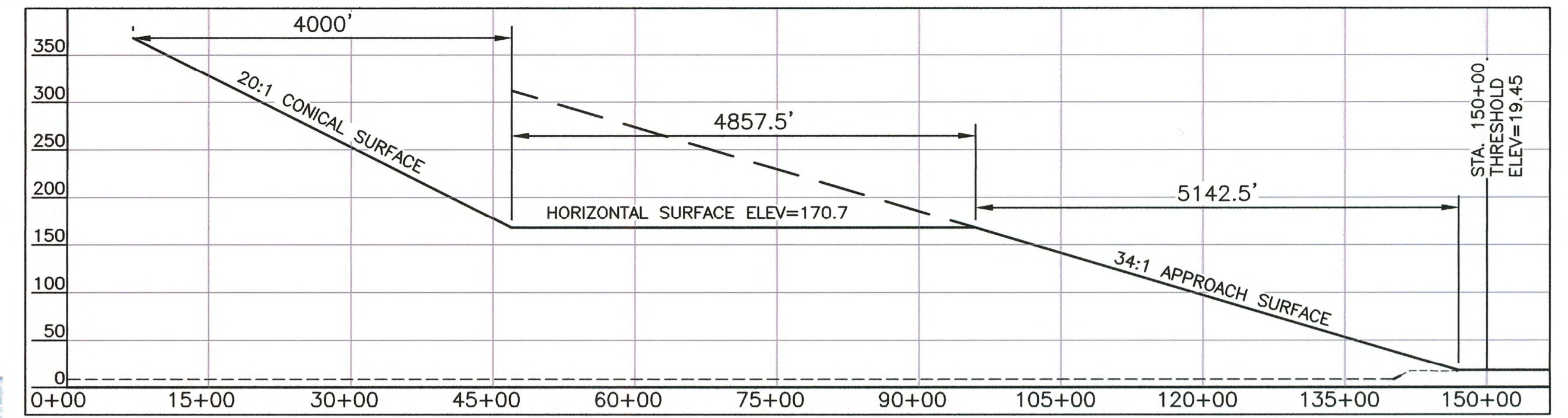
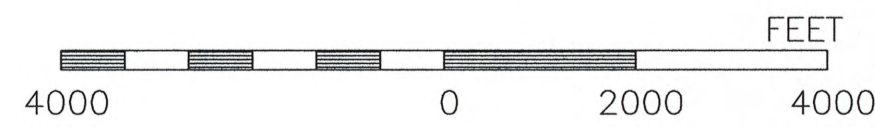
7/23/2018 9:29 AM

U:\2047060600\drawing-dlp-2014\c\sheets\2047060600_pho_dlp_sheet_01-10_2014-AIRPORT AIRSPACE 14 CFR PART 77

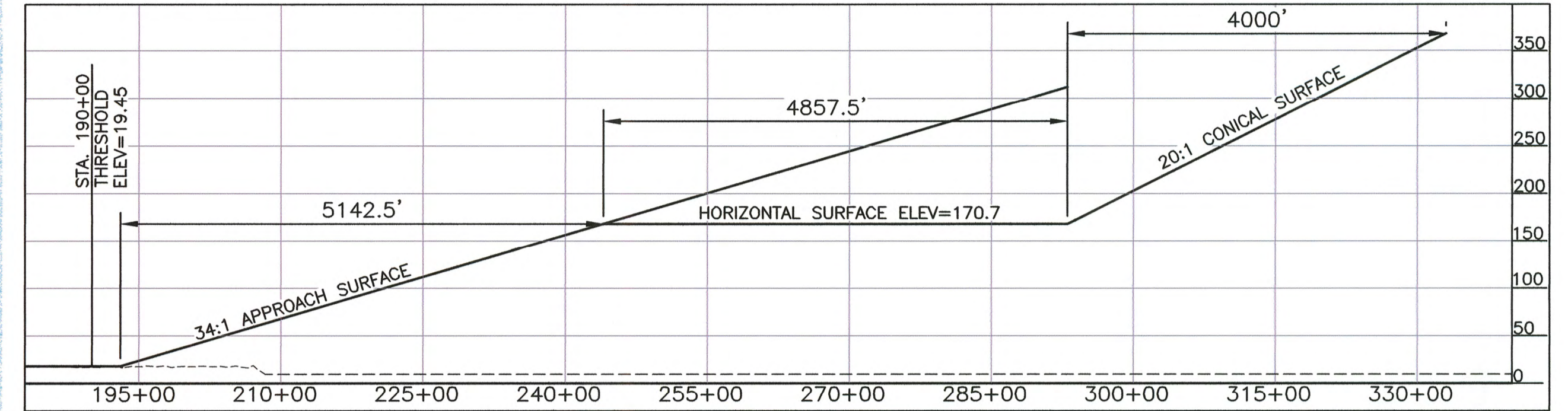


MAP SOURCE: U.S. GEOLOGICAL SURVEY

AIRSPACE PLAN



AIRSPACE PROFILE RWY 03



AIRSPACE PROFILE RWY 21

ULTIMATE RUNWAY F.A.R. PART 77 DIMENSIONS OTHER THAN UTILITY, NPA N.L.T. 3/4 S.M.

DESCRIPTION	DIMENSION
ESTABLISHED AIRPORT ELEVATION	20.7'
RUNWAY THRESHOLD ELEVATION	RW03: 19.45' / RW21: 19.45'
PRIMARY SURFACE	1000' X 4400'
HORIZONTAL SURFACE ELEVATION	170.7'
HORIZONTAL SURFACE RADIUS	10000'
APPROACH SURFACE	500' X 4000' X 10000'
APPROACH SURFACE SLOPE	34:1
CONICAL SURFACE WIDTH	4000' @ 20:1
TRANSITIONAL SURFACE SLOPE	7:1

NON-STANDARD CONDITIONS

ITEM	STANDARD	EXISTING	ULTIMATE
LANDFILL SEPARATION	10000	1550	1550

PART 77 SURFACE OBSTRUCTION TABLE (OUTER PORTION)

ID #	DESCRIPTION	STATION/ OFFSET	ELEV.	SURFACE PENETRATED	SURFACE ELEVATION	AMOUNT PENETRATED	DISPOSITION	STAGE TO CORRECT
	NONE							

NOTES:

1. THERE ARE NO KNOWN HEIGHT ZONING RESTRICTIONS AT POINT HOPE.

DESIGN TCK
DRAWN TCK
CHECKED JGL

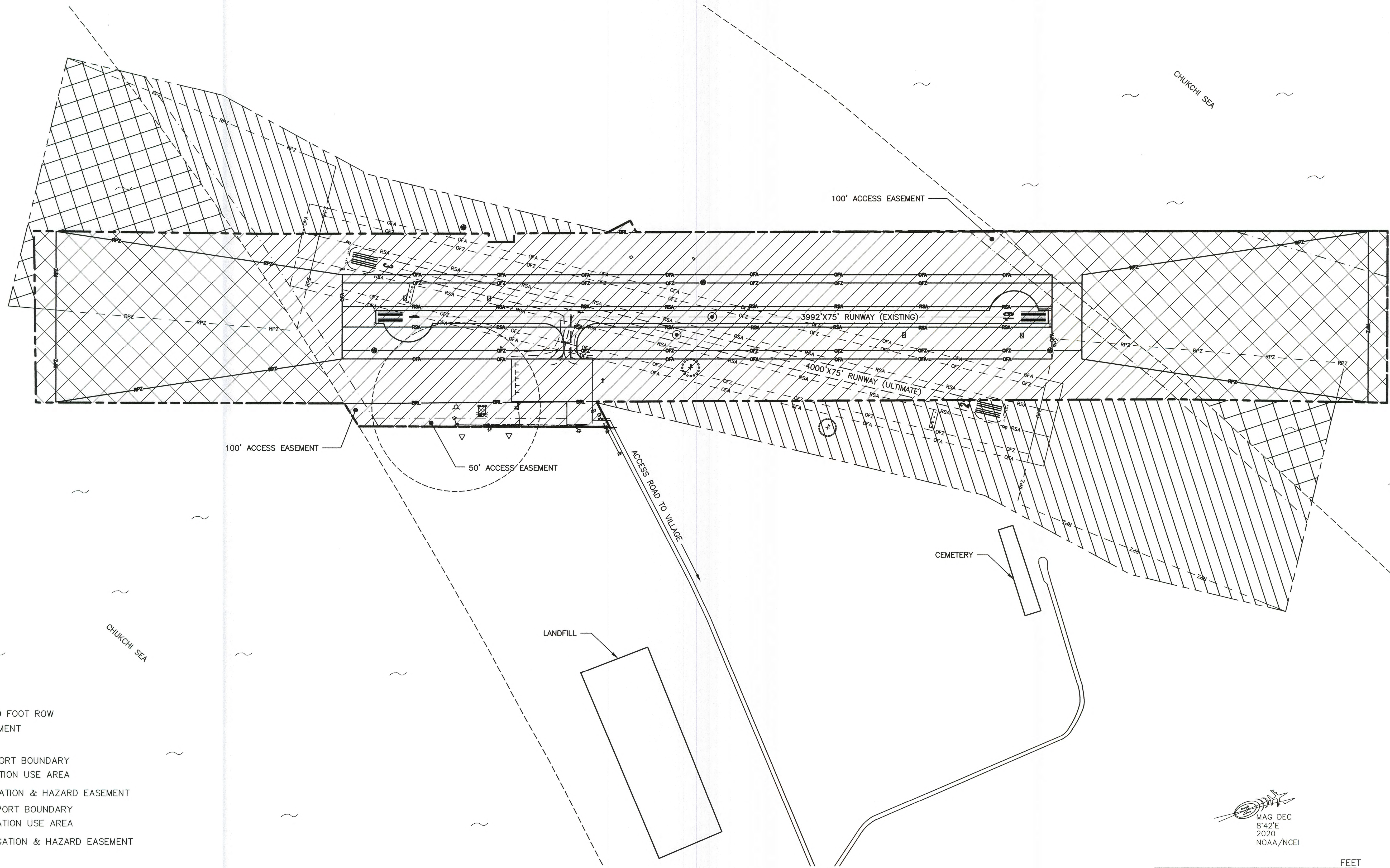
STATE OF ALASKA
DEPARTMENT OF TRANSPORTATION AND PUBLIC FACILITIES
NORTHERN REGION-AVIATION
APPROVED: *Albert M.L. Beck*
ALBERT M.L. BECK, P.E.
DATE: 9/14/18
PROJECT DELIVERY LEAD

BY	DATE	REVISIONS	FAA

BY	DATE	REVISIONS	FAA

POINT HOPE AIRPORT
POINT HOPE, ALASKA
AIRPORT AIRSPACE, 14 CFR, PART 77

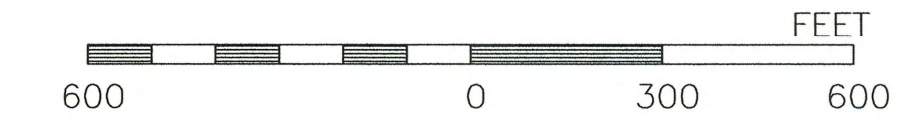
SHEET
9 OF
12



LEGEND

- ROAD WITH 50 FOOT ROW
- ACCESS EASEMENT
- BUILDING
- EXISTING AIRPORT BOUNDARY
- EXISTING AVIATION USE AREA
- EXISTING AVIGATION & HAZARD EASEMENT
- ULTIMATE AIRPORT BOUNDARY
- ULTIMATE AVIATION USE AREA
- ULTIMATE AVIGATION & HAZARD EASEMENT

MAG DEC
8°42'E
2020
NOAA/NCEI



DESIGN TCK
DRAWN TCK
CHECKED JGL

STATE OF ALASKA
DEPARTMENT OF TRANSPORTATION AND PUBLIC FACILITIES
NORTHERN REGION-AVIATION

APPROVED: *Albert M.L. Beck*
ALBERT M.L. BECK, P.E.
DATE 9/14/18
PROJECT DELIVERY LEAD

BY	DATE	REVISIONS	FAA

BY	DATE	REVISIONS	FAA

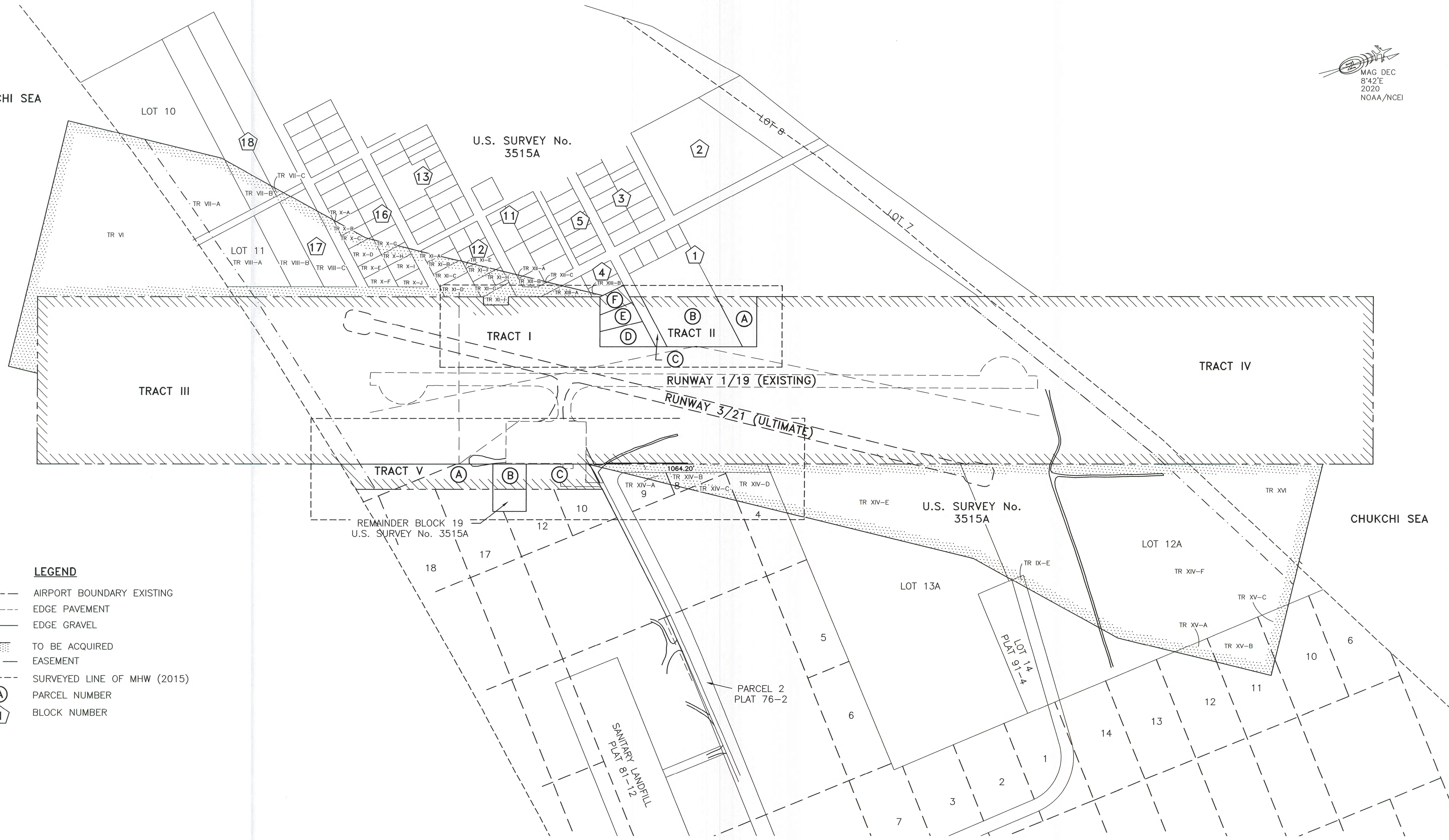
POINT HOPE AIRPORT
POINT HOPE, ALASKA
AIRPORT LAND USE

SHEET
10 OF
12

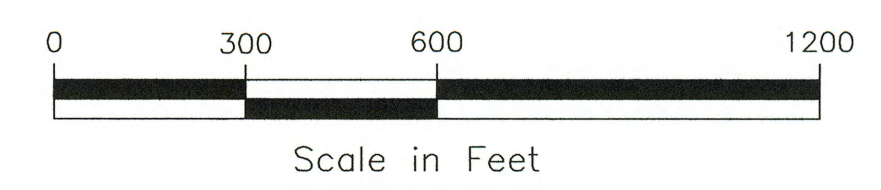


CHUKCHI SEA

CHUKCHI SEA



- LEGEND**
- AIRPORT BOUNDARY EXISTING
 - - - EDGE PAVEMENT
 - EDGE GRAVEL
 - ▨ TO BE ACQUIRED EASEMENT
 - - - SURVEYED LINE OF MHW (2015)
 - (A) PARCEL NUMBER
 - (1) BLOCK NUMBER



DESIGN	TCK
DRAWN	TCK
CHECKED	JGL

STATE OF ALASKA
DEPARTMENT OF TRANSPORTATION AND PUBLIC FACILITIES
NORTHERN REGION-AVIATION

APPROVED: *Albert M.L. Beck* DATE *9/14/18*
ALBERT M.L. BECK, P.E. DESIGN GROUP CHIEF

BY	DATE	REVISIONS	FAA

BY	DATE	REVISIONS	FAA

POINT HOPE AIRPORT
POINT HOPE, ALASKA
ALP PROPERTY MAP

SHEET
11 OF
12

PROPERTY STATUS BLOCK

Table with 9 columns: TRACT, PARCEL, ACRES, GRANTOR, INTEREST, CONVEYANCE DOC, ACQ DATE, FAA GRANT #, RD INFO. Rows include various parcels with grantors like USA, TIGARA CORPORATION, SOA-DNR, and TIKIGAQ CORPORATION.

PROPERTY STATUS BLOCK

Table with 9 columns: TRACT, PARCEL, ACRES, GRANTOR, INTEREST, CONVEYANCE DOC, ACQ DATE, FAA GRANT #, RD INFO. Rows include parcels XI through XVI with grantors like TIKIGAQ CORPORATION and DNR.

NOTES:

- 1. TIKIGAQ CORPORATION IS SUCCESSOR TO TIGARA CORPORATION EFFECTIVE 1997.
2. (ASRC) ARCTIC SLOPE REGIONAL CORPORATION
3. (SOA-DNR) STATE OF ALASKA, DEPARTMENT OF NATURAL RESOURCES.
AREAS HAVE BEEN UPDATED TO REFLECT CURRETN SURVEY DATA.
A) INFORMATION HEREON IS BASED ON A FIELD SURVEY CONDUCTED BY McCLINTOCK LAND ASSOCIATES, INC., FROM AUGUST 11 THROUGH AUGUST 24, 2015.
B) THE NATURAL MEANDERS OF THE LINE OF MEAN HIGH WATER OF THE CHUKCHI SEA FORM A PORTION OF THE TRUE BOUNDARY OF THESE PARCELS.
C) MEANDERS SHOWN WERE DETERMINED AT TIME OF SURVEY DURING AUGUST OF 2015.

DESIGN TCK
DRAWN TCK
CHECKED JGL

STATE OF ALASKA
DEPARTMENT OF TRANSPORTATION AND PUBLIC FACILITIES
NORTHERN REGION-AVIATION
APPROVED: [Signature] DATE 9/24/18
ALBERT M.L. BECK, P.E. DESIGN GROUP CHIEF

Table with 3 columns: BY, DATE, REVISIONS, FAA

Table with 3 columns: BY, DATE, REVISIONS, FAA

POINT HOPE AIRPORT
POINT HOPE, ALASKA
ALP PROPERTY MAP