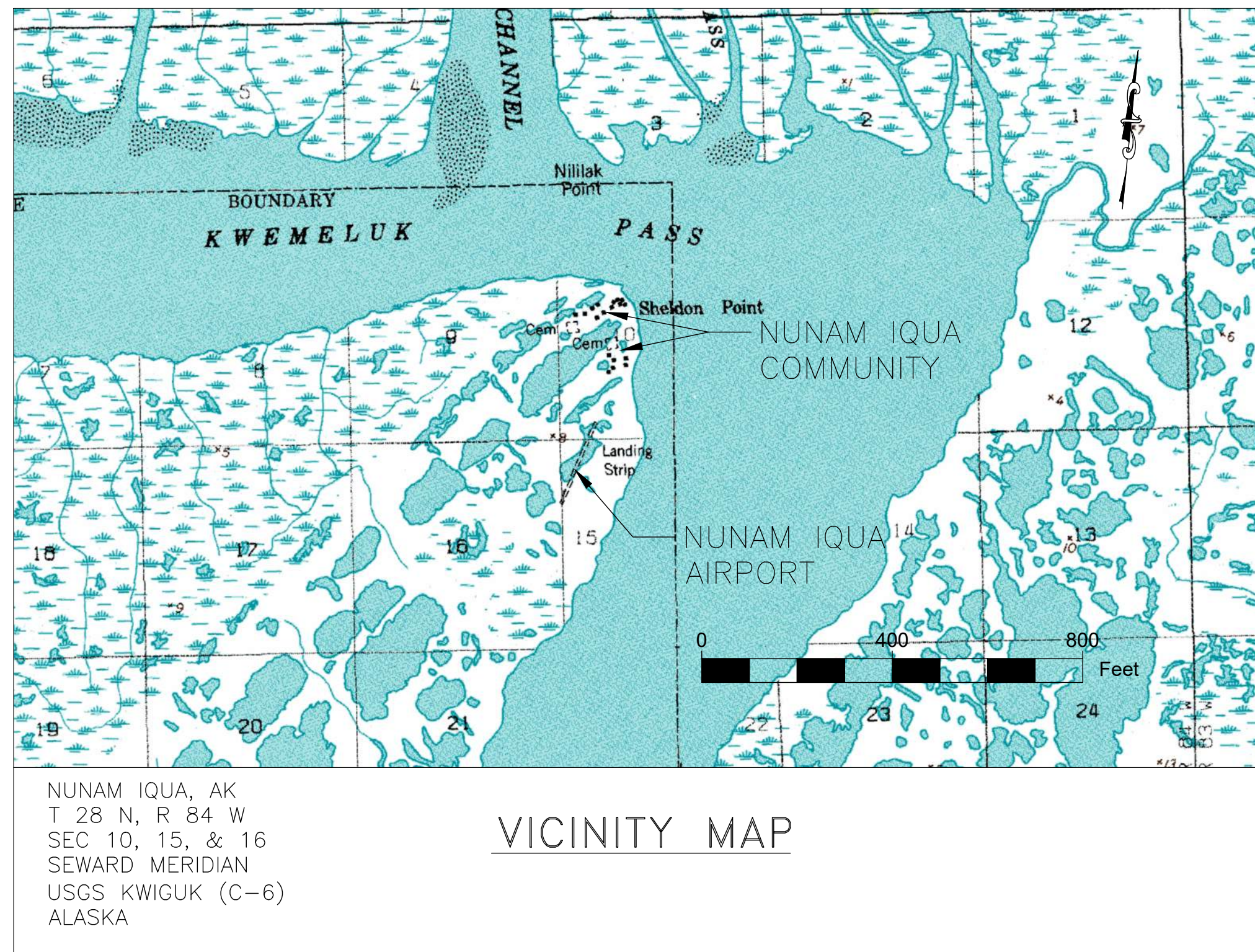


NUNAM IQUA AIRPORT AIRPORT LAYOUT PLAN NUNAM IQUA, ALASKA



LEGEND		
ITEM	EXISTING	ULTIMATE
BUILDING RESTRICTION LINE (BRL)		SAME
RUNWAY SAFETY AREA (RSA)		
RUNWAY OBSTACLE FREE ZONE (ROFZ)		
RUNWAY OBJECT FREE AREA (ROFA)		
RUNWAY PROTECTION ZONE (RPZ)		
PROPERTY LINE		
RUNWAY LIGHT		SAME
AIRPORT REFERENCE POINT (ARP)		
THRESHOLD LIGHTS		
UNLIGHTED WIND CONE		SAME
LIGHTED WIND CONE & SEGMENTED CIRCLE		SAME
ROTATING BEACON		SAME
SURVEY MONUMENT		SAME
ROADWAYS AND BOARDWALKS		
BUILDING (ON-AIRPORT)		
BUILDING (OFF-AIRPORT)		SAME
EXISTING OVERHEAD POWER LINE		SAME

SHEET INDEX	
SHEET NO.	DESCRIPTION
1	COVER
2	AIRPORT DATA
3	EXISTING AIRPORT LAYOUT PLAN
4	ULTIMATE AIRPORT LAYOUT PLAN
5	TERMINAL AREA
6	INNER APPROACH SURFACE
7	AIRPORT AIRSPACE PLAN - (FAR PART 77)
8	AIRSPACE COMPOSITE APPROACH PROFILE
9	AIRPORT LAND USE
10	PROPERTY MAP

DESIGN MJM
DRAWN EPT
CHECKED REH

STATE OF ALASKA
DEPARTMENT OF TRANSPORTATION AND PUBLIC FACILITIES
NORTHERN REGION-AVIATION

APPROVED: Albert Beck DATE 1/17/2023
ALBERT M.L. BECK, P.E. PROJECT DELIVERY LEAD

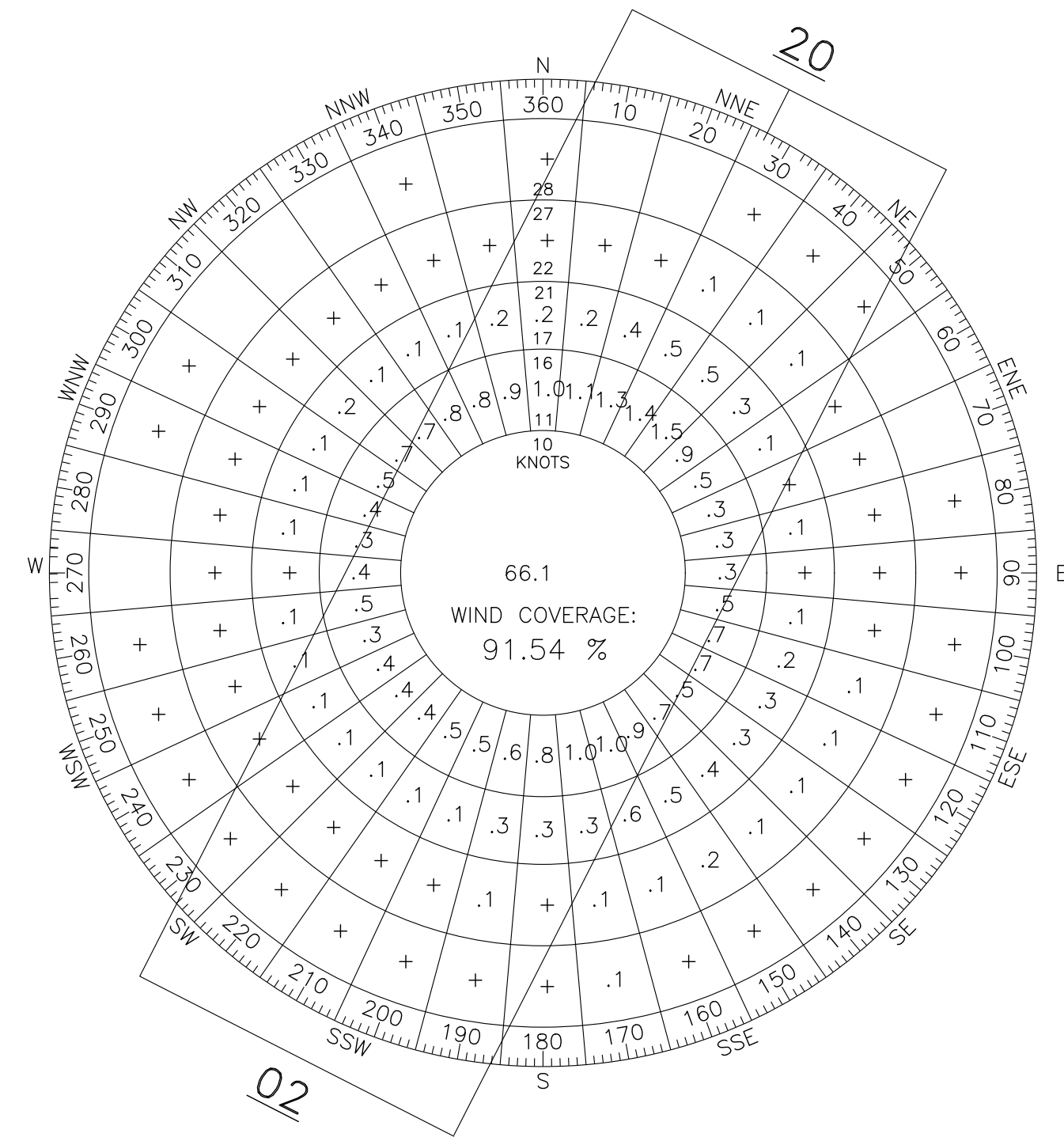
AIRPORT LAYOUT PLAN CONDITIONAL APPROVAL SUBJECT TO
ALP APPROVAL LETTER DATED 2/9/2023
FAA AIRSPACE REVIEW NUMBER: 2023-AAL-28-NRA

DATE 2/9/2023
FAA, AIRPORTS DIVISION ALASKAN REGION

BY	DATE	REVISIONS

NUNAM IQUA AIRPORT
NUNAM IQUA, ALASKA
COVER

SHEET
1 OF
10



WIND COVERAGE

ALL WEATHER CONDITIONS

RUNWAY 02-20

10.5 KNOTS 85.94%

13.0 KNOTS 91.54%

16.0 KNOTS 96.29%

SOURCE:
NOAA'S INTEGRATED SURFACE DATABASE FOR EMMONAK
LOCATED APPROXIMATELY 18 NAUTICAL MILES TO THE
NORTHEAST. WIND DATA PERIOD IS FROM 2011-2020.

NONSTANDARD CONDITIONS

ITEM	STANDARD	EXISTING	ULTIMATE
LANDFILL	> 5000'	1400'	SAME
SEWAGE LAGOON	> 5000'	1300'	SAME
RUNWAY WIDTH	75'	60'	75'
RSA WIDTH	150'	120'	150'
RSA LENGTH BEYOND RUNWAY ENDS	300'	240'	300'
FUEL TANK IN ROFA	> 250' FROM CL	249' FROM CL	RELOCATED
BOARDWALKS IN RPZ	NONE IN RPZ	IN RPZ FROM 180' TO 460' BEYOND RW 20 END	REMOVED
PARKING APRON IN ROFA	> 250' FROM CL	127' FROM CL	RELOCATED

MODIFICATION TO STANDARDS

DESCRIPTION	STANDARD	EXISTING	ULTIMATE	AIRSPACE #	APPROVAL DATE
NONE					

PACS & SACS*

PID	DESIGNATION	LATITUDE	LONGITUDE	ELLIPSOID HEIGHT	NORTHING	EASTING	ELEVATION
SXP B	SACS	62°31'24.36959" N	164°50'28.00029" W	35.508	3116109.988	1836187.569	11.428
SXP C	SACS	62°31'00.98963" N	164°50'59.02602 W	34.475	3113709.703	1834774.094	10.384
SXP D	PACS	62°31'16.52643" N	164°50'42.83152" W	35.472	3115301.041	1835505.912	11.390

GEOGRAPHIC COORDINATES (NAD83) & ELEVATIONS (NAVD88)

ITEM	EXISTING LATITUDE	EXISTING LONGITUDE	EXISTING ELEVATION	ULTIMATE LATITUDE	ULTIMATE LONGITUDE	ULTIMATE ELEVATION
AIRPORT REFERENCE POINT	62°31'13.50" N	164°50'51.52" W	-	62°31'12.40" N	164°50'52.72" W	-
THRESHOLD RW 02	62°31'00.23" N	164°51'05.95" W	15.97	62°30'57.16" N	164°51'09.28" W	17.30
THRESHOLD RW 20	62°31'26.77" N	164°50'37.10" W	16.33	62°31'27.07" N	164°50'36.76" W	17.40

NOTES

1. SURVEY FIELD WORK COMPLETED JULY AND DECEMBER 2019 BY LOUNSBURY, INCORPORATED. AERIAL PHOTOGRAPHY AND MAPPING INFORMATION WAS COLLECTED AUGUST 2019 BY KODIAK MAPPING, INCORPORATED.

2. THE COORDINATE SYSTEM USED FOR THIS ALP IS NAD83 (2011) ALASKA STATE PLANE ZONE 8 IN U.S. SURVEY FEET. THE VERTICAL DATUM IS NAVD88 USING GEOID 12B.

*AT THE CURRENT DATE, THE PACS AND SACS VALUES LISTED ABOVE WERE APPROVED BY THE NGS AS PART OF PROJECT SXP-247833 BUT DATA SHEETS ARE NOT YET AVAILABLE.

AIRPORT DATA

ITEM	EXISTING	ULTIMATE
ICAO IDENTIFIER	SXP	SXP
NATIONAL AIRPORT IDENTIFIER	50648.71*A	SAME
FAA SITE NUMBER	50698.71*A	50698.71*A
AIRPORT REFERENCE CODE (ARC)	A-II-SMALL	A-II SMALL
NPIAS SERVICE LEVEL (P, CS, R, GA)	GA	CS
AIRPORT ELEVATION (NAVD88)	17.58'	18.15'
MEAN MAX. TEMPERATURE, HOTTEST MONTH (JULY)	61°	61°
OBSTRUCTION SURVEY SOURCE & TYPE	LOUNSBURY & ASSOCIATES JULY 2019/VERTICALLY GUIDED AIRSPACE ANALYSIS SURVEY	SAME
MAGNETIC DECLINATION, YEAR, RATE OF CHANGE	9°37'E/2019/21'W	PER YEAR
AIRPORT AND TERMINAL NAVIGATION AIDS	ROTATING BEACON, WIND CONE	SAME

RUNWAY 02-20 DATA

ITEM	EXISTING	ULTIMATE
FAR PART 77 APPROACH CATEGORY (UTILITY, OTHER THAN UTILITY)	UTILITY	SAME
FAR PART 77 APPROACH TYPE (V, C, NPA, PA)	V	NPA
RUNWAY DESIGN CODE (RDC)	A-II-VIS	A-II-4000
CRITICAL AIRCRAFT	A-II FLEET MIX (CESSNA 208 CARAVAN, CASA 212)	SAME
FAR PART 77 APPROACH SLOPE	20:1	SAME
VISIBILITY MIN	VISUAL	≥ 3/4 MILE
RUNWAY SURFACE	GRAVEL	GRAVEL
TRUE MEAN BEARING	N26°40'41"E	SAME
EFFECTIVE GRADE	0.0%	0.3%
RUNWAY TOUCHDOWN ZONE ELEVATIONS (NAVD88)	17.58'	18.15'
RUNWAY DIMENSIONS	60' X 3016'	75' X 3300'
RUNWAY SAFETY AREA (RSA) DIMENSIONS	120' X 3496'	150' X 3900'
RSA LENGTH BEYOND RW ENDS	240'	300'
RUNWAY PROTECTION ZONE (RPZ) DIMENSIONS	1000'X250'X450'	1700'X1000'X1510'
RUNWAY OBJECT FREE AREA (ROFA) DIMENSIONS	500'X3616'	500'X3900'
ROFA LENGTH BEYOND RW ENDS	300'	300'
RUNWAY OBSTACLE FREE ZONE (ROFZ) DIMENSIONS	250'X3416'	250'X3700'
RUNWAY LIGHTING TYPE	MIRL	MIRL
RUNWAY MARKING TYPE (P, NP, NONE)	NONE	NONE
RUNWAY VISUAL APPROACH AIDS	ROTATING BEACON, SEG. CIR, WINDCONE	SEGMENTED CIRCLE, WINDCONE, ROTATING BEACON, PAPI, AWOS

TAXIWAY DATA

ITEM	EXISTING	ULTIMATE
TAXIWAY DESIGN GROUP	2A	2A
TAXIWAY DIMENSIONS	50 X 170'	35' X 250'
TAXIWAY SHOULDER WIDTH	10'	15'
TAXIWAY SAFETY AREA (TSA) WIDTH	80'	79'
TAXIWAY OBJECT FREE AREA (TOFA) WIDTH	124'	124'
TAXIWAY LIGHTING	MITL	MITL
TAXIWAY MARKING	NONE	NONE

DESIGN MJM
DRAWN EPT
CHECKED REH

STATE OF ALASKA
DEPARTMENT OF TRANSPORTATION AND PUBLIC FACILITIES
NORTHERN REGION-AVIATION

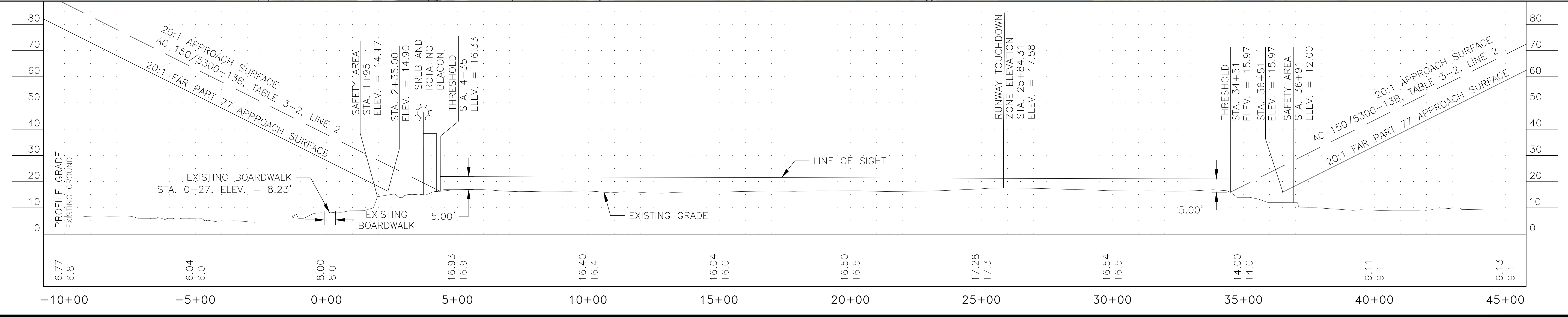
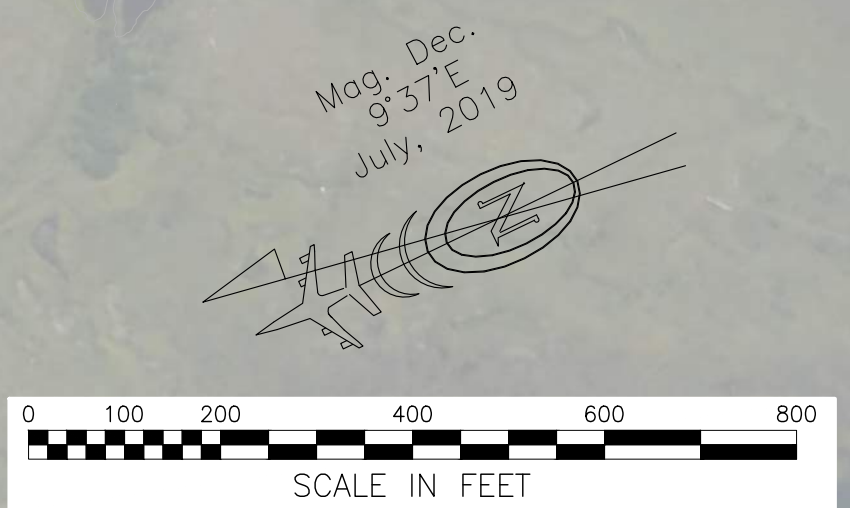
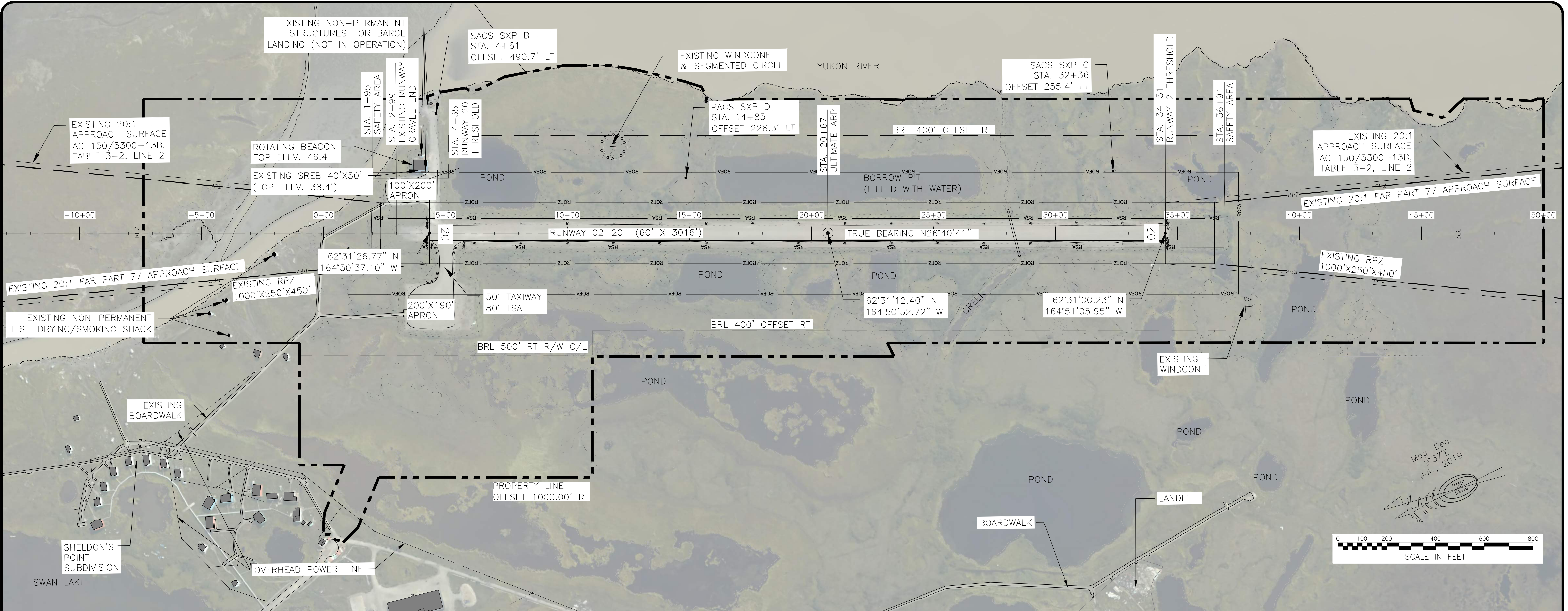
APPROVED: *Albert Beck* DATE 1/17/2023
ALBERT M.L. BECK, P.E. PROJECT DELIVERY LEAD

BY	DATE	REVISIONS	FAA

BY	DATE	REVISIONS	FAA

NUNAM IQUA AIRPORT
NUNAM IQUA, ALASKA
AIRPORT DATA

T:\AKDOT\173039 - 2018 Aeronautical Surveys and ALPs\05 CADD\Nunam Iqua\CAD\2020 ALP_Nunam Iqua_SXP\03_04_EXISTING & ULTIMATE AIRPORT LAYOUT 3-3-3 Existing P&P 1/3/2023 1:37 PM



DESIGN MJM
 DRAWN EPT
 CHECKED REH

STATE OF ALASKA
 DEPARTMENT OF TRANSPORTATION AND PUBLIC FACILITIES
 NORTHERN REGION-AVIATION

APPROVED: *Albert Beck* DATE: 1/17/2023
 ALBERT M.L. BECK, P.E. PROJECT DELIVERY LEAD

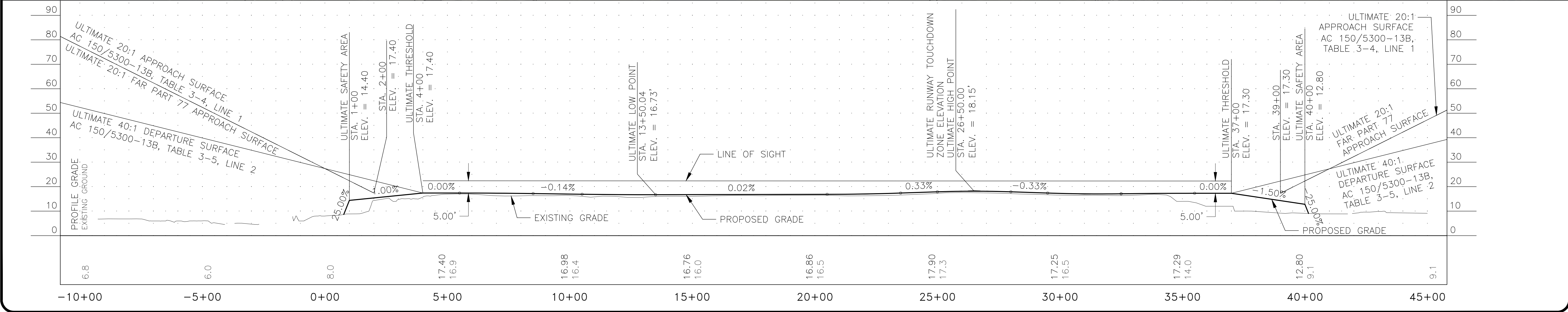
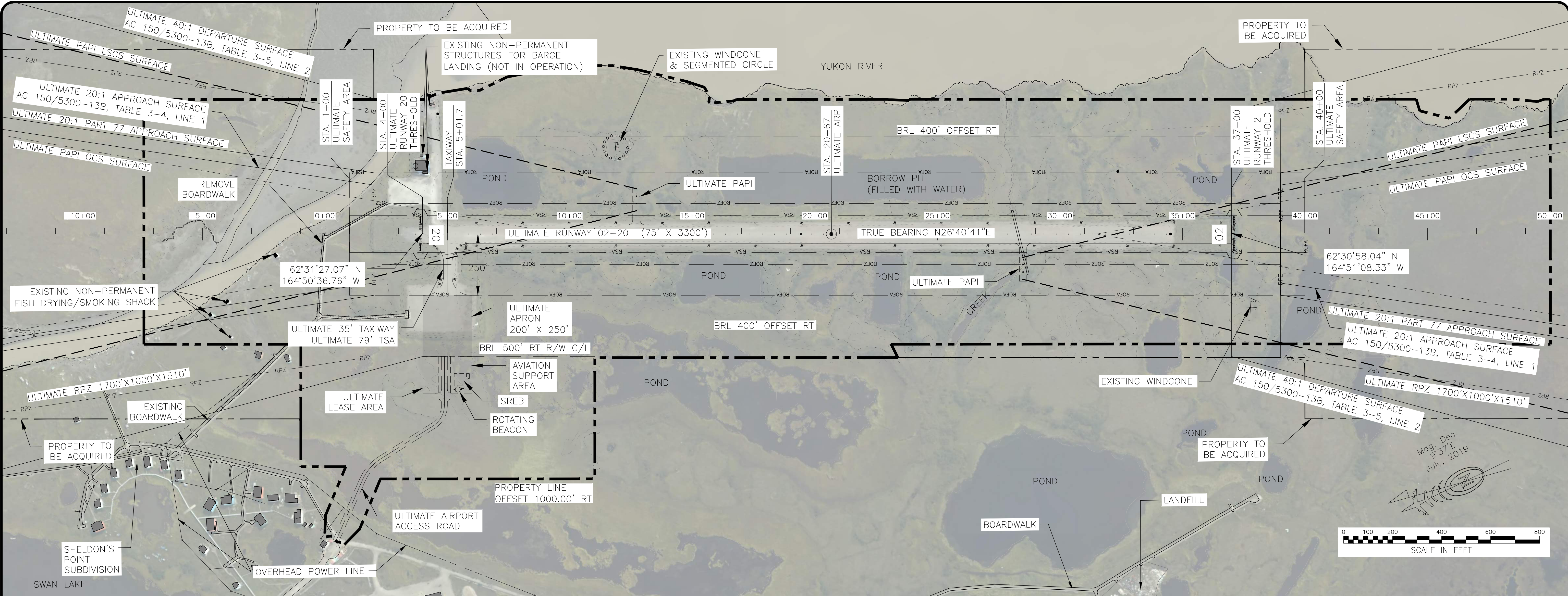
BY	DATE	NO.	REVISIONS	FAA

BY	DATE	NO.	REVISIONS	FAA

NUNAM IQUA AIRPORT
 NUNAM IQUA, ALASKA
 EXISTING PLAN AND PROFILE

SHEET
 3 OF 10

T:\AKDOT\173039 - 2018 Aeronautical Surveys and ALPs\05 CADD\Nunam Iqua\CAD\2020 ALP_Nunam Iqua_SXP\03_04_EXISTING & ULTIMATE AIRPORT LAYOUT 3-3-4 Ultimate P&P 1/3/2023 1:37 PM



DESIGN MJM
 DRAWN EPT
 CHECKED REH

STATE OF ALASKA
 DEPARTMENT OF TRANSPORTATION AND PUBLIC FACILITIES
 NORTHERN REGION-AVIATION

APPROVED: *Albert Beck* DATE 1/17/2023
 ALBERT M.L. BECK, P.E. PROJECT DELIVERY LEAD

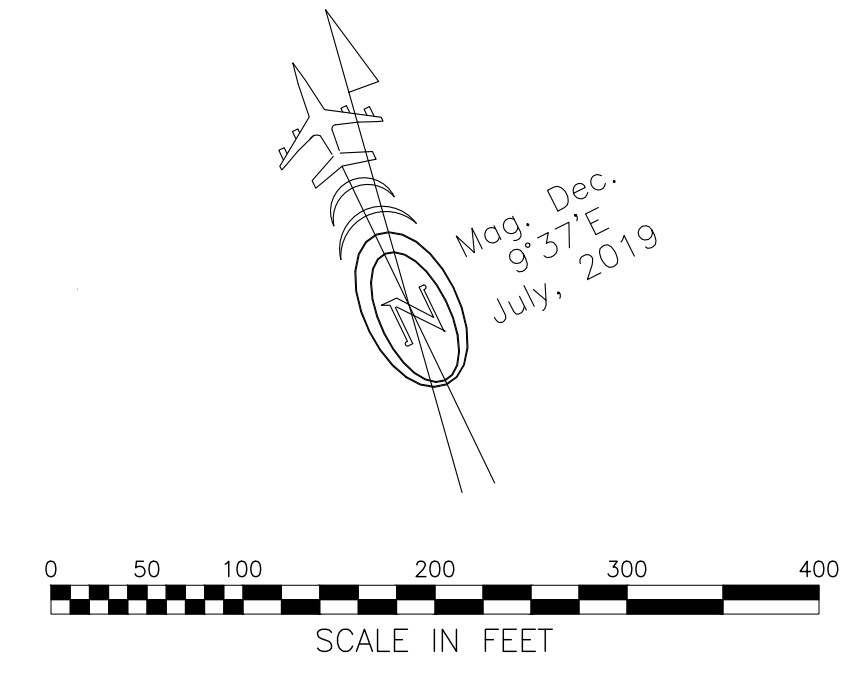
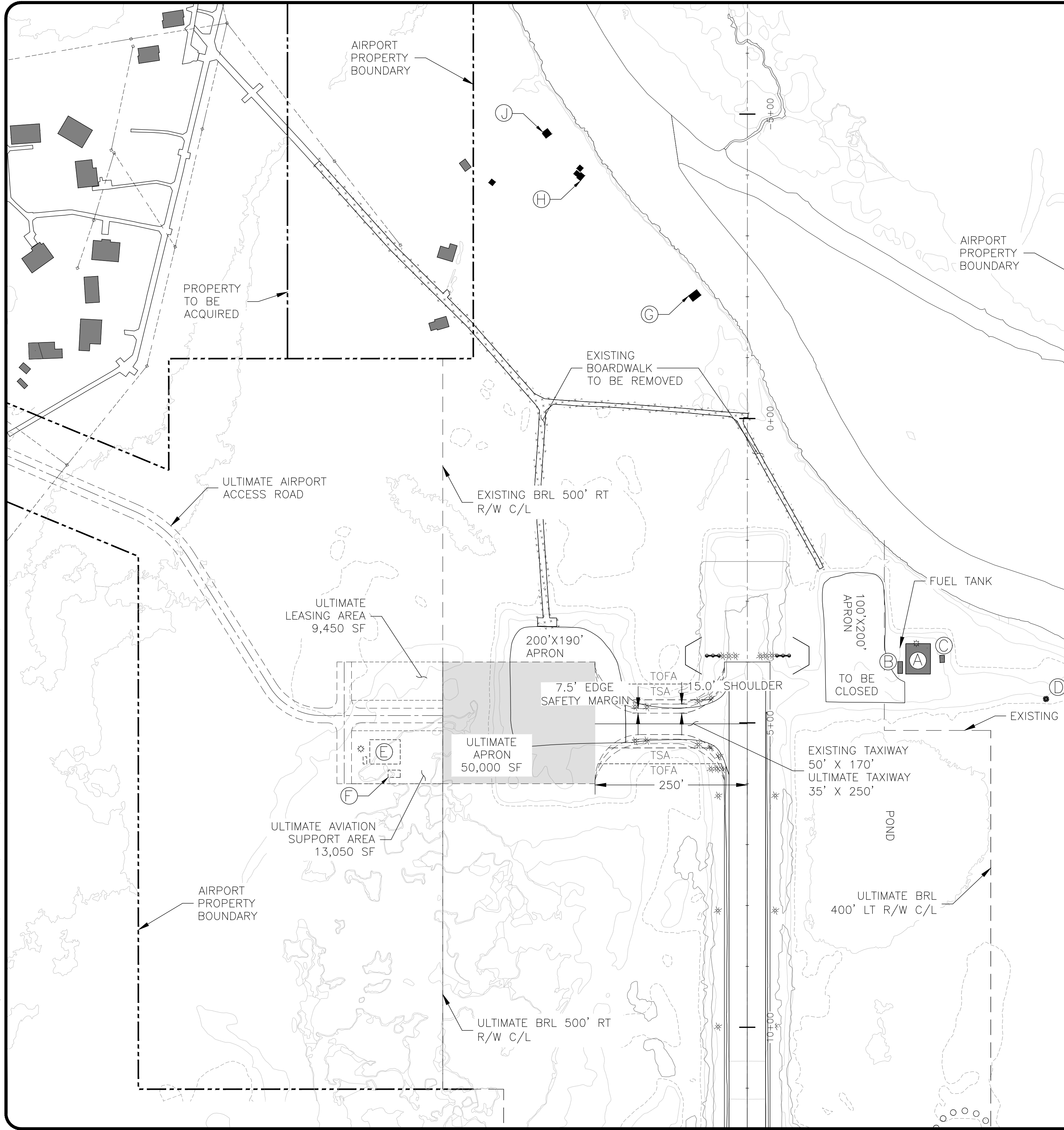
BY	DATE	NO.	REVISIONS	FAA

BY	DATE	NO.	REVISIONS	FAA

NUNAM IQUA AIRPORT
 NUNAM IQUA, ALASKA
 ULTIMATE PLAN AND PROFILE

SHEET
 4 OF 10

T:\AKDOT\173039 - 2018 Aeronautical Surveys and ALPs\05 CADD\Nunam Iqua\CAD\2020 ALP_Nunam Iqua_SXP\05_TERMINAL AREA-5-TERMINAL AREA 1/3/2023 1:34 PM



BUILDING DATA TABLE						
#	STRUCTURE NAME	STATION / OFFSET	TOP ELEV.	OBSTRUCTION MARKING (Y/N)		REMARKS
				EXISTING	ULTIMATE	
A	SREB & ROTATING BEACON	3+70 / 277.8' LT	46.45'	N	N	TO BE REMOVED
B	NON-PERMANENT BARGE LANDING STRUCTURE	4+09 / 251.1' LT	23.44'	N	N	TO BE REMOVED
C	NON-PERMANENT BARGE LANDING STRUCTURE	3+95 / 320.3' LT	23.15'	N	N	TO BE REMOVED
D	NON-PERMANENT BARGE LANDING STRUCTURE	4+36 / 530.6' LT	21.18'	N	N	NO OBSTRUCTION
E	ULTIMATE SREB & ROTATING BEACON	5+68 / 570.0' RT	50.00'	N	N	NO OBSTRUCTION
F	FUTURE BUILDING	5+90 / 570.0' RT	35.00'	N	N	NO OBSTRUCTION
G	NON-PERMANENT FISH DRYING/SMOKING SHACK	-2+03 / 76.1 RT	17.79'	N	N	TO BE REMOVED
H	NON-PERMANENT FISH DRYING/SMOKING SHACK	-3+99 / 267.0 RT	15.84'	N	N	TO BE REMOVED
J	NON-PERMANENT FISH DRYING/SMOKING SHACK	-4+67 / 321.4 RT	19.67'	N	N	TO BE REMOVED

DESIGN MJM
 DRAWN EPT
 CHECKED REH

STATE OF ALASKA
 DEPARTMENT OF TRANSPORTATION AND PUBLIC FACILITIES
 NORTHERN REGION-AVIATION

APPROVED: *Albert Beck* DATE **1/17/2023**
 ALBERT M.L. BECK, P.E. PROJECT DELIVERY LEAD

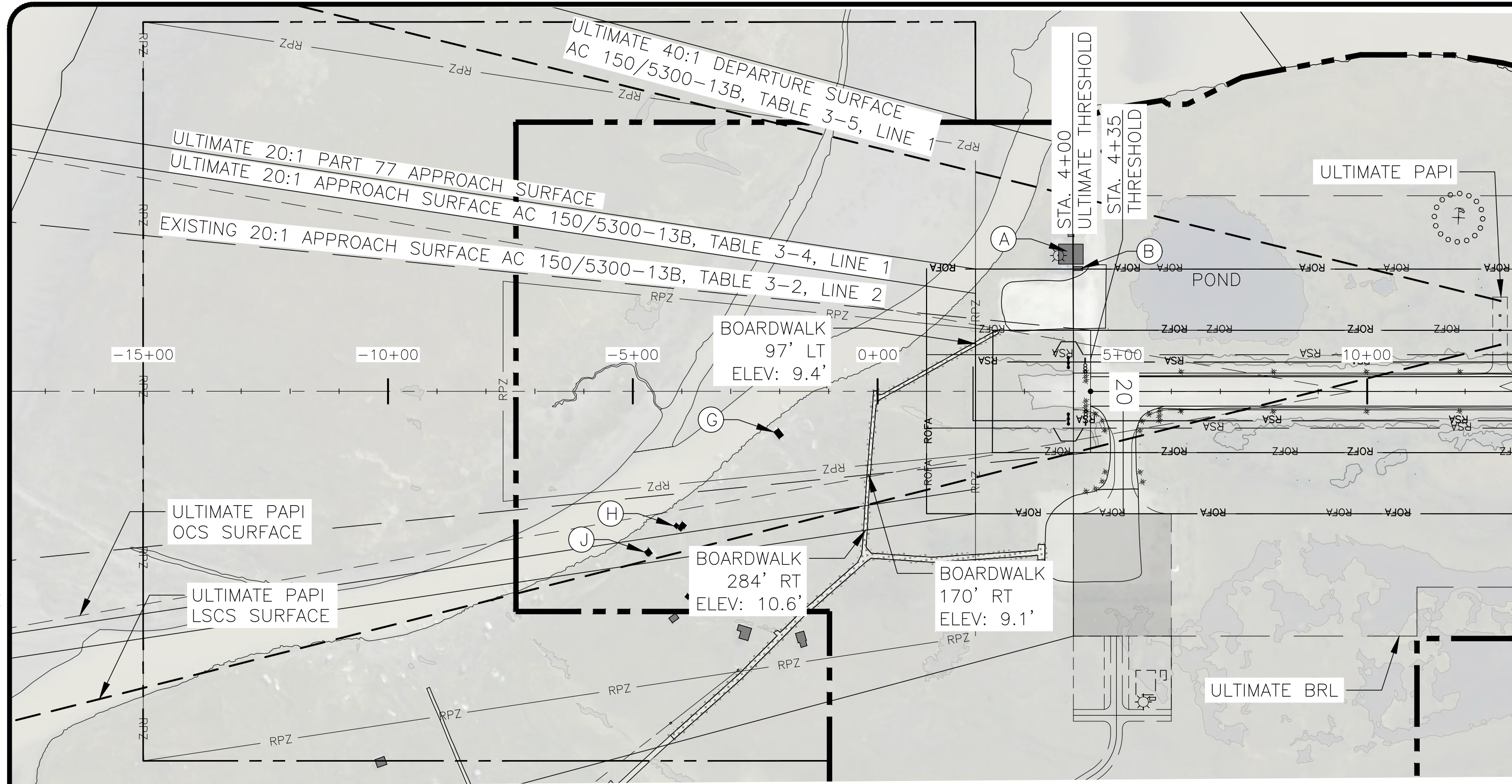
BY	DATE	NO.	REVISIONS	FAA

BY	DATE	NO.	REVISIONS	FAA

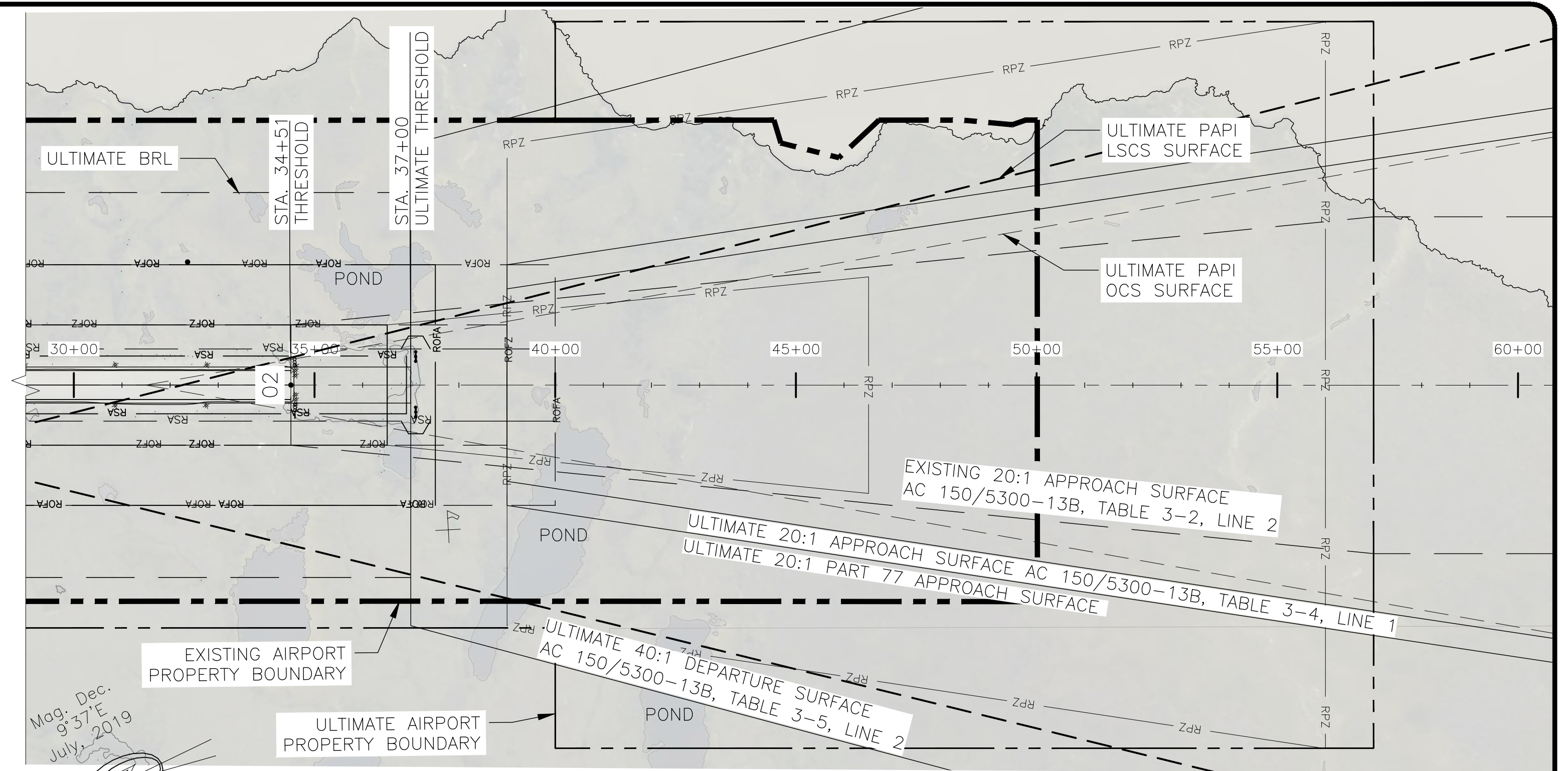
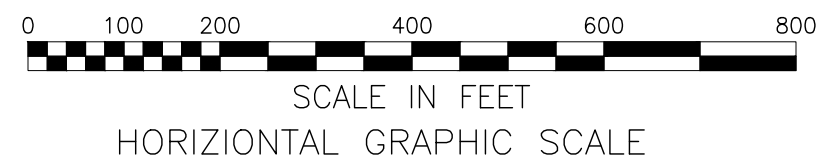
NUNAM IQUA AIRPORT
 NUNAM IQUA, ALASKA
 TERMINAL AREA

SHEET
5 OF
 10

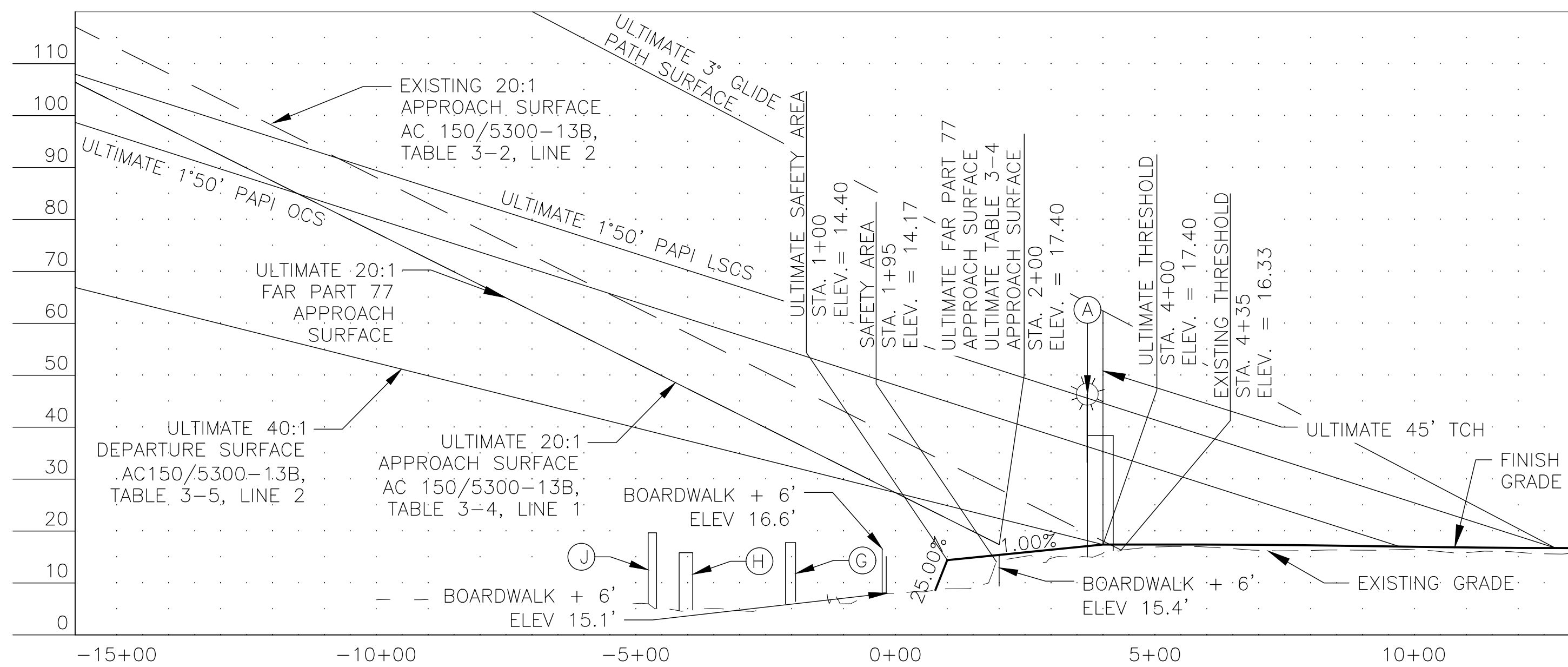
8/25/2022 12:17 PM T:\AKDOT\173039 - 2018 Aeronautical Surveys and ALPs\05 CADD\Nunam Iqua_SXP\06_INNER_APPROACH-06 Inner Approach



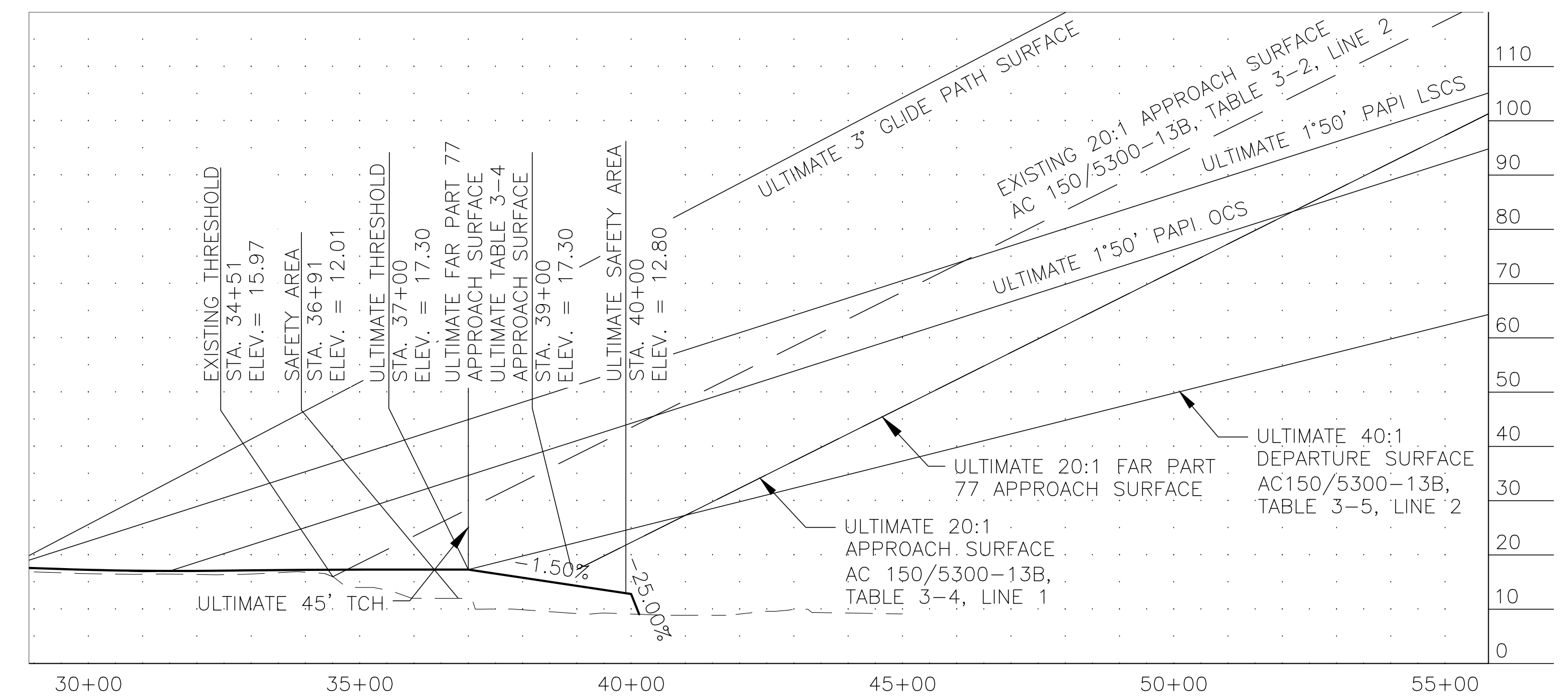
RUNWAY 20 INNER APPROACH PLAN



RUNWAY 02 INNER APPROACH PLAN



RUNWAY 20 INNER APPROACH PROFILE



RUNWAY 02 INNER APPROACH PROFILE

FAR PART 77 SURFACE OBSTRUCTION TABLE

#	STRUCTURE NAME	STATION / OFFSET	TOP ELEV.	SURFACE PENETRATED	SURFACE ELEV	SURFACE PENETRATION	REMARKS
(A)	SREB	3+70 / 278' LT	46.45	TRANSITIONAL	21.40	25.05	REMOVE
(B)	MISC. STRUCTURE	3+56 / 250' LT	33.20	PRIMARY	17.40	15.80	REMOVE

NOTES:

1. THERE ARE NO OBSTRUCTIONS FOR THE ULTIMATE RUNWAY 20 INNER APPROACH.
2. THERE ARE NO OBSTRUCTIONS FOR THE EXISTING OR ULTIMATE RUNWAY 02 INNER APPROACH.
3. SEE BUILDING TABLE ON TERMINAL PLAN, SHEET 5, FOR STRUCTURE IDENTIFICATION.

DESIGN MJM
DRAWN EPT
CHECKED REH

STATE OF ALASKA
DEPARTMENT OF TRANSPORTATION AND PUBLIC FACILITIES
NORTHERN REGION-AVIATION

APPROVED: *Albert Beck* DATE 1/17/2023
ALBERT M.L. BECK, P.E. DESIGN GROUP CHIEF

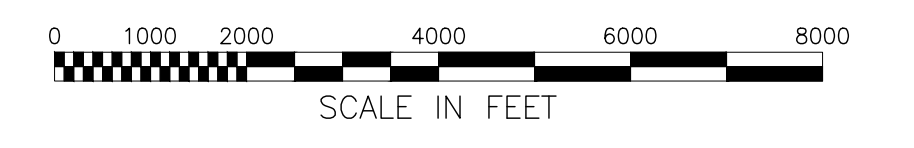
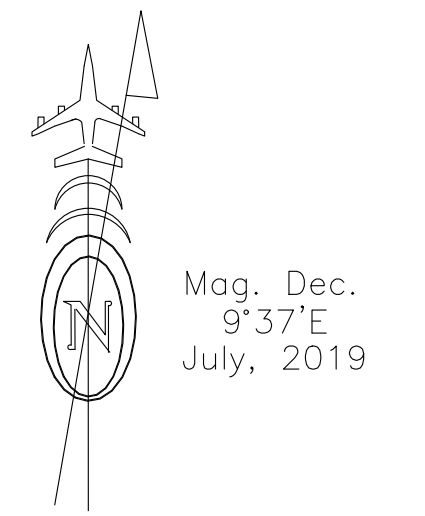
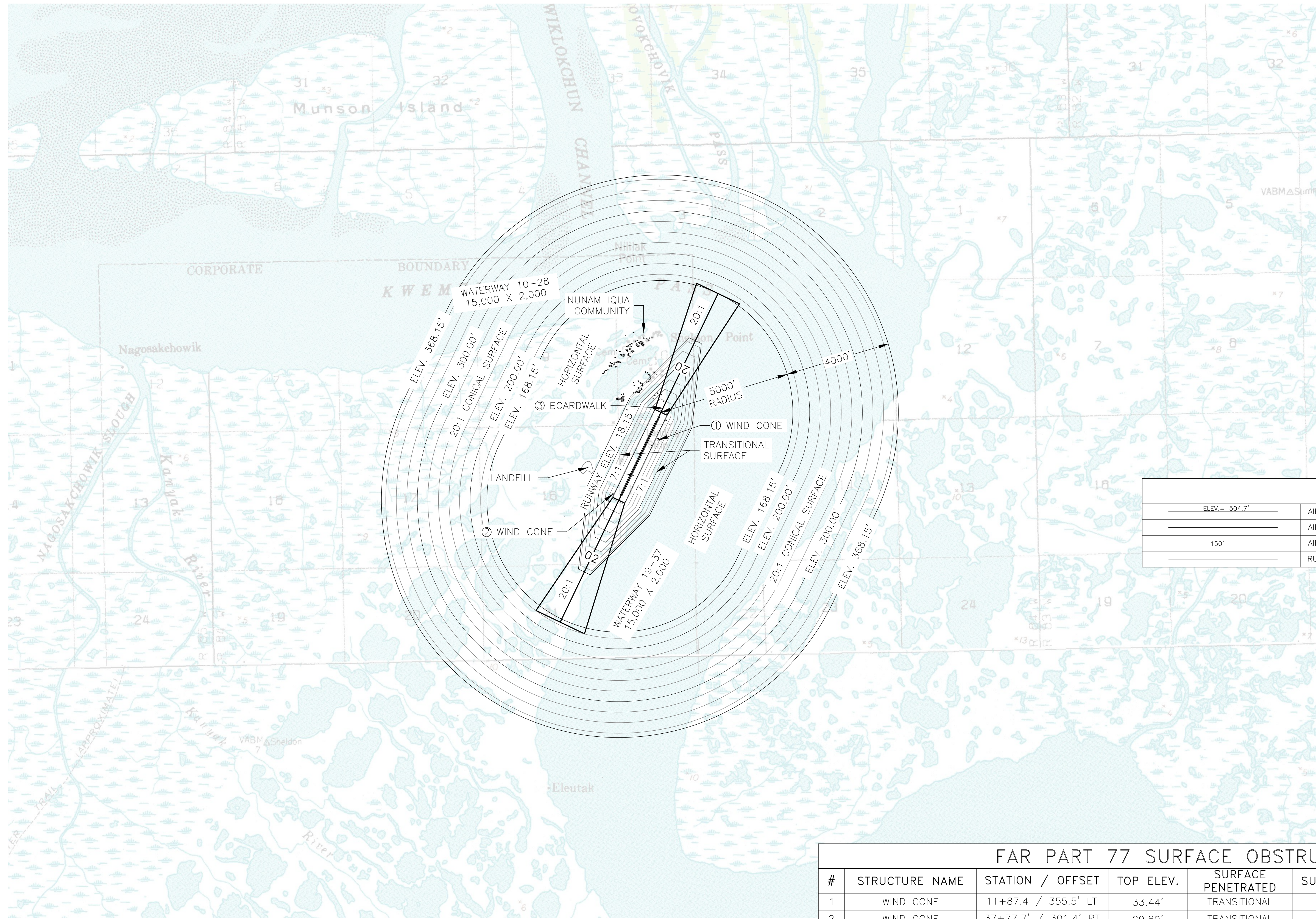
BY	DATE	NO.	REVISIONS	FAA

BY	DATE	NO.	REVISIONS	FAA

NUNAM IQUA AIRPORT
NUNAM IQUA, ALASKA
INNER APPROACH

SHEET
6
OF
10

T:\AKDOT\173039 - 2018 Aeronautical Surveys and ALPs\05 CADD\Nunam Iqua_SXP\07-08_AIRSPACE PART 77-7 Airspace Part 77 8/16/2022 5:16 PM



- NOTES:**
- SEE SHEET 6 FOR INNER APPROACH OBSTRUCTION POINTS.
 - SEE SHEET 8 FOR SURFACE OBSTRUCTION DATA.

LEGEND	
	AIRSPACE ELEVATION (SURFACE DIVIDERS)
	AIRSPACE SURFACE DIVIDERS (NON CONTROLLING)
	AIRSPACE ELEVATION (50' INCREMENTS)
	RUNWAY CENTERLINE (EXTENDED)

#	STRUCTURE NAME	STATION / OFFSET	TOP ELEV.	SURFACE PENETRATED	SURFACE ELEV	SURFACE PENETRATION	REMARKS
1	WIND CONE	11+87.4 / 355.5' LT	33.44'	TRANSITIONAL	32.40'	1.04'	TO REMAIN
2	WIND CONE	37+77.7' / 301.4' RT	29.89'	TRANSITIONAL	24.74'	5.15'	TO REMAIN
3	BOARDWALK	0+27.0' / 0.0'	8.23'	PRIMARY	17.40'	NONE	REMOVE

AIRSPACE PLAN

DESIGN MJM
DRAWN EPT
CHECKED REH

STATE OF ALASKA
DEPARTMENT OF TRANSPORTATION AND PUBLIC FACILITIES
NORTHERN REGION-AVIATION

APPROVED: *Albert Beck* DATE 1/17/2023
ALBERT M.L. BECK, P.E. PROJECT DELIVERY LEAD

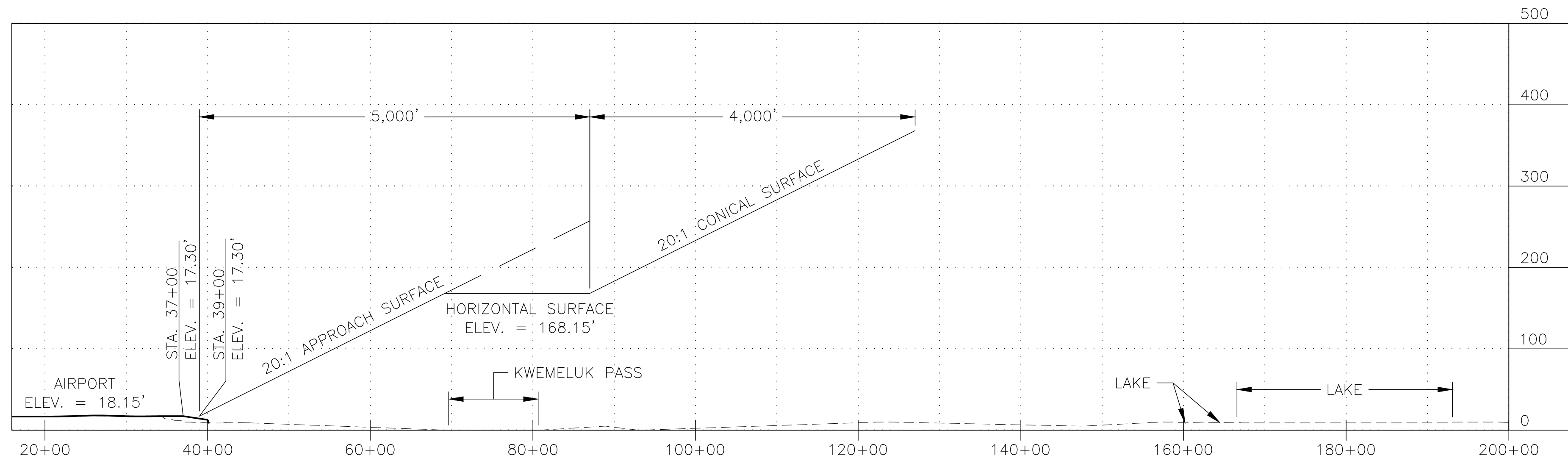
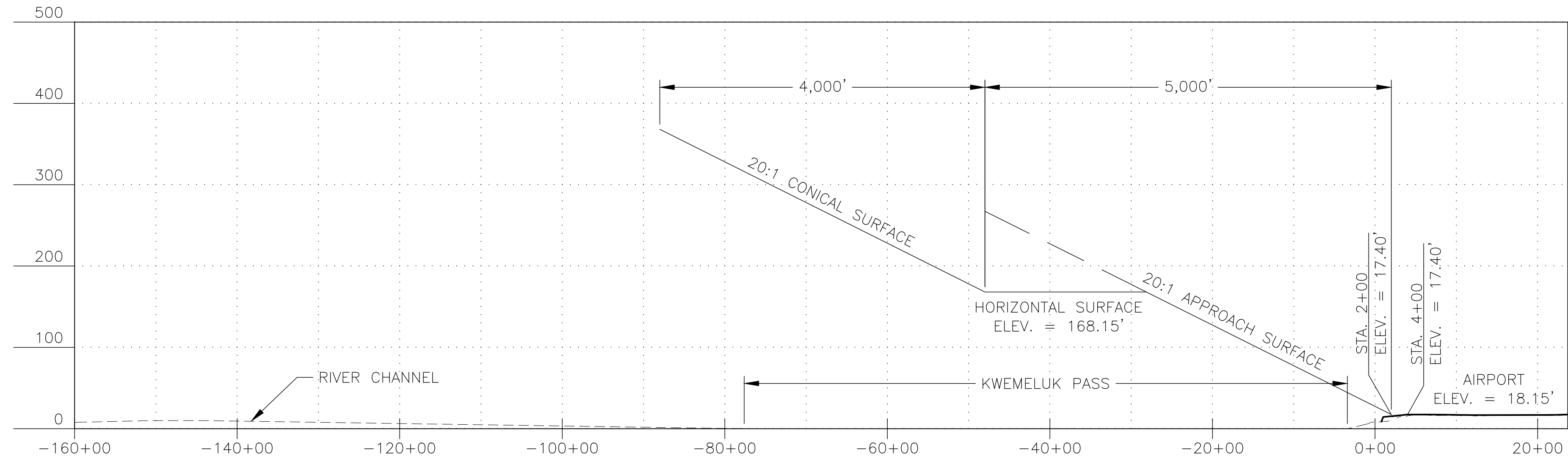
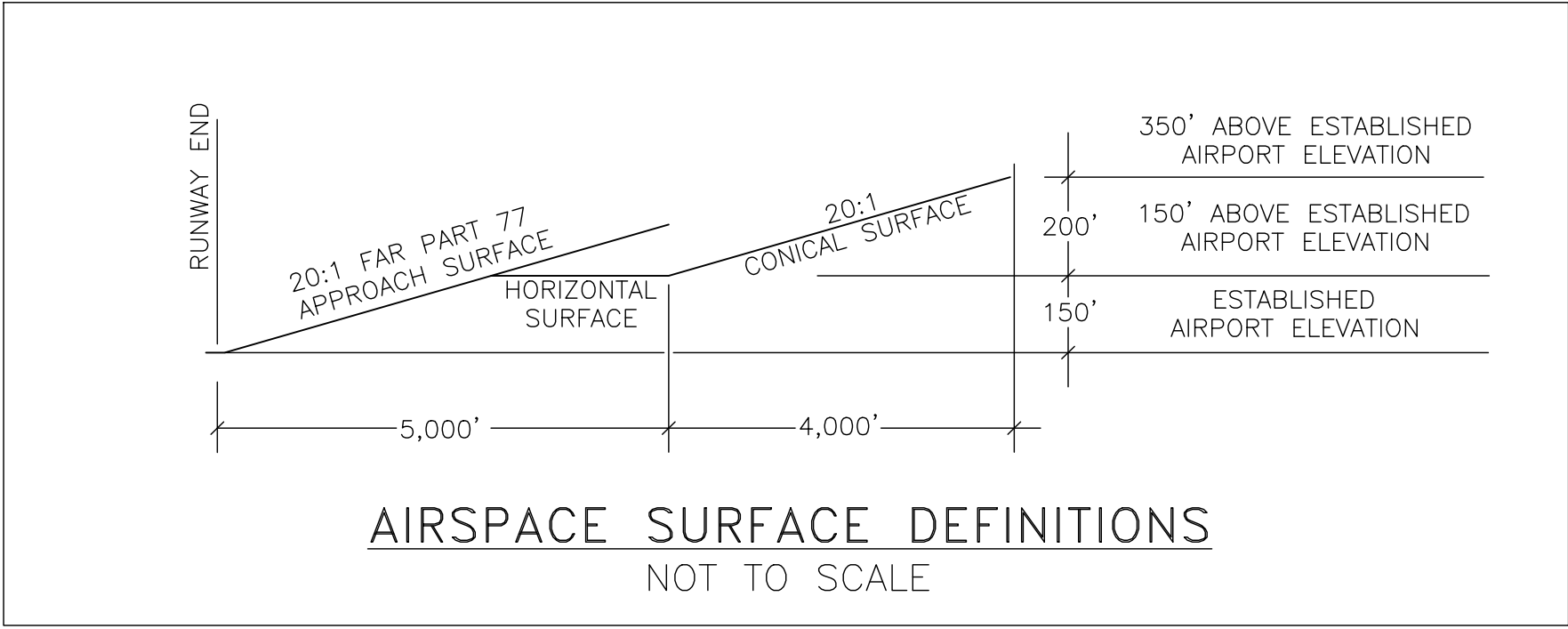
BY	DATE	NO.	REVISIONS	FAA

BY	DATE	NO.	REVISIONS	FAA

NUNAM IQUA AIRPORT
NUNAM IQUA, ALASKA
AIRPORT AIRSPACE (FAR PART 77) PLAN

SHEET
7 OF
10

T:\AKDOT\173039 - 2018 Aeronautical Surveys and ALPs\05 CADD\Nunam Iqua\CAD\2020 ALP_Nunam Iqua_SXP\07-08_AIRSPACE PART 77-8 Airspace Part 77 - PROFILE 8/16/2022 5:16 PM



DESIGN MJM
 DRAWN EPT
 CHECKED REH

STATE OF ALASKA
 DEPARTMENT OF TRANSPORTATION AND PUBLIC FACILITIES
 NORTHERN REGION-AVIATION

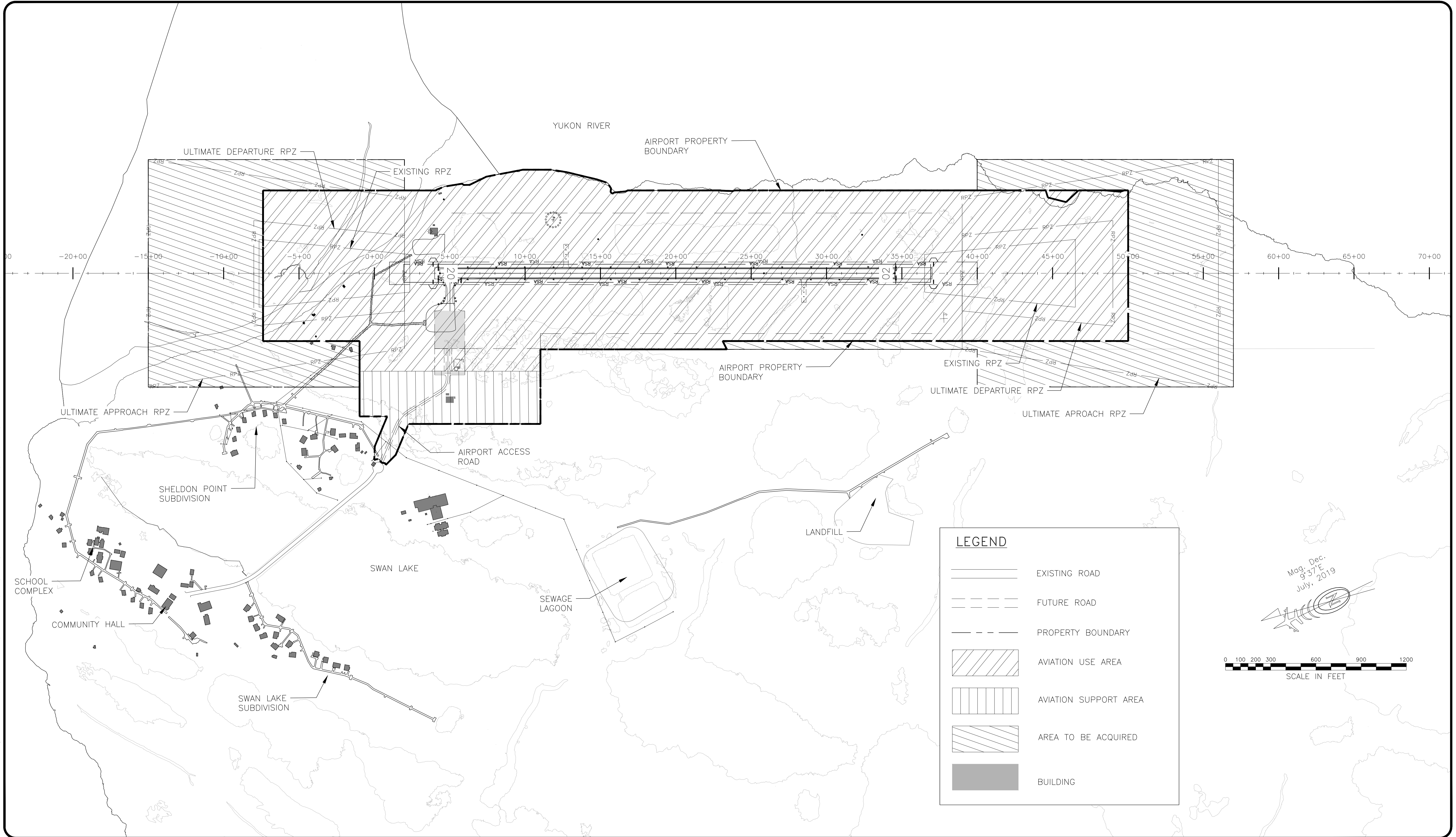
APPROVED: *Albert Beck* DATE 1/17/2023
 ALBERT M.L. BECK, P.E. PROJECT DELIVERY LEAD

BY	DATE	NO.	REVISIONS	FAA

BY	DATE	NO.	REVISIONS	FAA

NUNAM IQUA AIRPORT
 NUNAM IQUA, ALASKA
 AIRPORT COMPOSITE APPROACH PROFILES

SHEET 8 OF 10



LEGEND

- EXISTING ROAD
- FUTURE ROAD
- PROPERTY BOUNDARY
- AVIATION USE AREA
- AVIATION SUPPORT AREA
- AREA TO BE ACQUIRED
- BUILDING

Mag. Dec. 9°37'E
July, 2019

0 100 200 300 600 900 1200
SCALE IN FEET

DESIGN	MJM
DRAWN	EPT
CHECKED	REH

STATE OF ALASKA
DEPARTMENT OF TRANSPORTATION AND PUBLIC FACILITIES
NORTHERN REGION-AVIATION

APPROVED: *Albert Beck* DATE 1/17/2023
ALBERT M.L. BECK, P.E. PROJECT DELIVERY LEAD

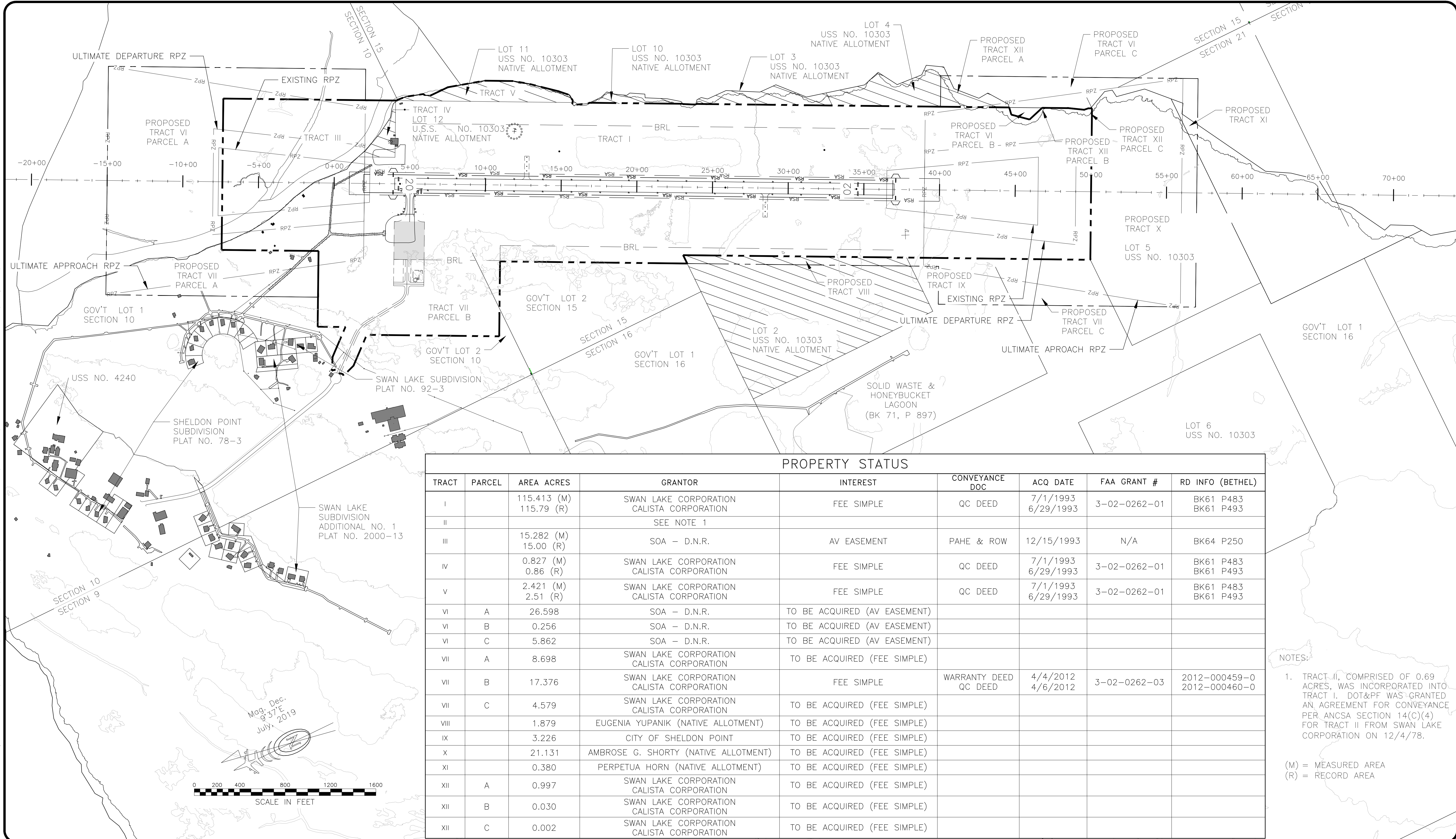
BY	DATE	NO.	REVISIONS	FAA

BY	DATE	NO.	REVISIONS	FAA

NUNAM IQUA AIRPORT
NUNAM IQUA, ALASKA
AIRPORT LAND USE

SHEET
9 OF 10

T:\AKDOT\173039 - 2018 Aeronautical Surveys and ALPs\05 CADD\Nunam Iqua\CAD\Nunam Iqua_SXP\10_PROPERTY MAP-10_Property Map 1/7/2023 1:36 PM



PROPERTY STATUS								
TRACT	PARCEL	AREA ACRES	GRANTOR	INTEREST	CONVEYANCE DOC	ACQ DATE	FAA GRANT #	RD INFO (BETHEL)
I		115.413 (M) 115.79 (R)	SWAN LAKE CORPORATION CALISTA CORPORATION	FEE SIMPLE	QC DEED	7/1/1993 6/29/1993	3-02-0262-01	BK61 P483 BK61 P493
II			SEE NOTE 1					
III		15.282 (M) 15.00 (R)	SOA - D.N.R.	AV EASEMENT	PAHE & ROW	12/15/1993	N/A	BK64 P250
IV		0.827 (M) 0.86 (R)	SWAN LAKE CORPORATION CALISTA CORPORATION	FEE SIMPLE	QC DEED	7/1/1993 6/29/1993	3-02-0262-01	BK61 P483 BK61 P493
V		2.421 (M) 2.51 (R)	SWAN LAKE CORPORATION CALISTA CORPORATION	FEE SIMPLE	QC DEED	7/1/1993 6/29/1993	3-02-0262-01	BK61 P483 BK61 P493
VI	A	26.598	SOA - D.N.R.	TO BE ACQUIRED (AV EASEMENT)				
VI	B	0.256	SOA - D.N.R.	TO BE ACQUIRED (AV EASEMENT)				
VI	C	5.862	SOA - D.N.R.	TO BE ACQUIRED (AV EASEMENT)				
VII	A	8.698	SWAN LAKE CORPORATION CALISTA CORPORATION	TO BE ACQUIRED (FEE SIMPLE)				
VII	B	17.376	SWAN LAKE CORPORATION CALISTA CORPORATION	FEE SIMPLE	WARRANTY DEED QC DEED	4/4/2012 4/6/2012	3-02-0262-03	2012-000459-0 2012-000460-0
VII	C	4.579	SWAN LAKE CORPORATION CALISTA CORPORATION	TO BE ACQUIRED (FEE SIMPLE)				
VIII		1.879	EUGENIA YUPANIK (NATIVE ALLOTMENT)	TO BE ACQUIRED (FEE SIMPLE)				
IX		3.226	CITY OF SHELDON POINT	TO BE ACQUIRED (FEE SIMPLE)				
X		21.131	AMBROSE G. SHORTY (NATIVE ALLOTMENT)	TO BE ACQUIRED (FEE SIMPLE)				
XI		0.380	PERPETUA HORN (NATIVE ALLOTMENT)	TO BE ACQUIRED (FEE SIMPLE)				
XII	A	0.997	SWAN LAKE CORPORATION CALISTA CORPORATION	TO BE ACQUIRED (FEE SIMPLE)				
XII	B	0.030	SWAN LAKE CORPORATION CALISTA CORPORATION	TO BE ACQUIRED (FEE SIMPLE)				
XII	C	0.002	SWAN LAKE CORPORATION CALISTA CORPORATION	TO BE ACQUIRED (FEE SIMPLE)				

NOTES:
 1. TRACT II, COMPRISED OF 0.69 ACRES, WAS INCORPORATED INTO TRACT I. DOT&PF WAS GRANTED AN AGREEMENT FOR CONVEYANCE PER ANCSA SECTION 14(C)(4) FOR TRACT II FROM SWAN LAKE CORPORATION ON 12/4/78.
 (M) = MEASURED AREA
 (R) = RECORD AREA

DESIGN MJM
 DRAWN EPT
 CHECKED REH

STATE OF ALASKA
 DEPARTMENT OF TRANSPORTATION AND PUBLIC FACILITIES
 NORTHERN REGION-AVIATION
 APPROVED: *Albert Beck* DATE 1/17/2023
 ALBERT M.L. BECK, P.E. PROJECT DELIVERY LEAD

BY	DATE	NO.	REVISIONS	FAA

BY	DATE	NO.	REVISIONS	FAA

NUNAM IQUA AIRPORT
 NUNAM IQUA, ALASKA
 PROPERTY MAP

SHEET
 10 OF 10