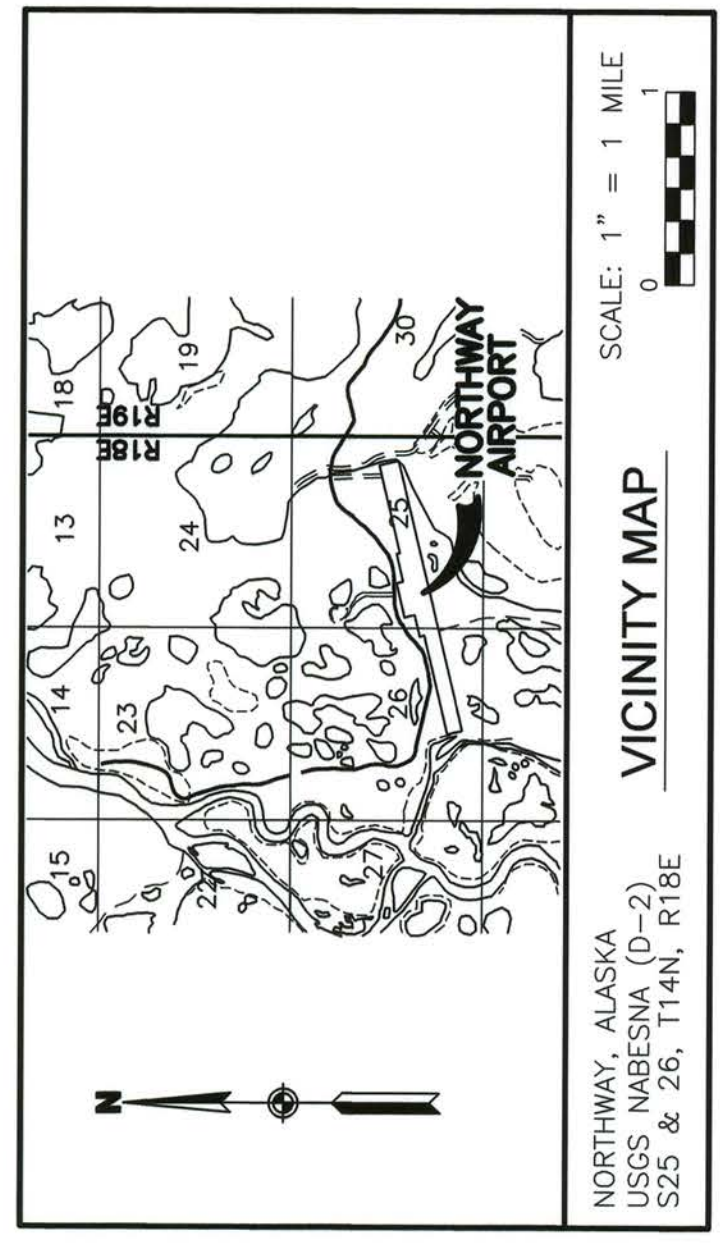
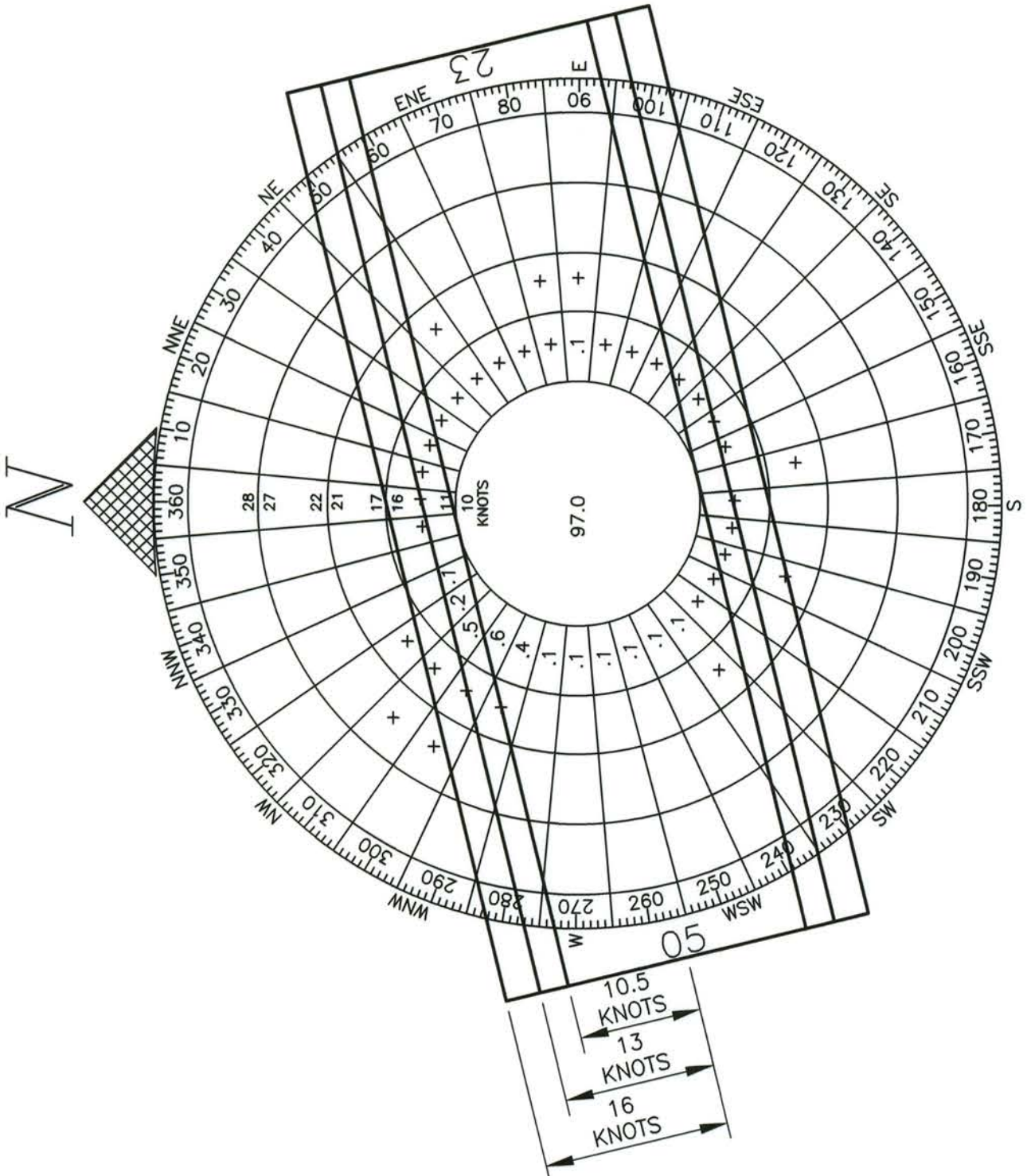


LOCATION MAP



VICINITY MAP



WIND DATA			
RUNWAY	10.5 kt	13 kt	16 kt
5-23	98.99%	99.66%	99.96%

STATION NAME: NORTHWAY
 SOURCE: WESTERN REGION CLIMATE CENTER
 PERIOD: 1/1998 TO 12/2003
 MEASURED IN MILES PER HOUR

SHEET INDEX

SHEET NO.	TITLE
1	AIRPORT DATA
2	AIRPORT LAYOUT PLAN
3	TERMINAL PLAN
4	INNER PORTION OF APPROACH SURFACE
5	AIRPORT AIRSPACE (FAR PART 77)
6	AIRPORT PROPERTY MAP

GEOGRAPHIC COORDINATES (NAD 83) & ELEVATIONS (NAVD 88)

ITEM	EXISTING LATITUDE	EXISTING LONGITUDE	EXISTING ELEVATION	ULTIMATE LATITUDE	ULTIMATE LONGITUDE	ULTIMATE ELEVATION
AIRPORT REFERENCE POINT	62°57'40.22"N	141°55'41.08"W	N/A	SAME	SAME	SAME
RUNWAY 5 END	62°57'34.19"N	141°56'34.60"W	1720.10'	SAME	SAME	SAME
RUNWAY 23 END	62°57'46.26"N	141°54'47.56"W	1718.67'	SAME	SAME	SAME

PACS & SACS

PID	DESIGNATION	LATITUDE	LONGITUDE	NORTHING	EASTING	ELEVATION	DESCRIPTION
DN7594	ORT A 2	62°57'41.71"N	141°55'55.33"W	3274583.13	1651729.48	1712.75	PACS
DN7595	ORT B	62°57'38.53"N	141°56'27.85"W	3274239.11	1650225.81	1717.52	SACS
DN7596	ORT C	62°57'47.07"N	141°55'20.35"W	3275109.41	1653345.89	1712.58	SACS

NOTES

- THIS ALP DRAWING SET IS UPDATED BASED ON AN AIRPORT OBSTRUCTION CHART SURVEY (AOC) COMPLETED BY USKH INC. IN JULY 2011 IN ACCORDANCE WITH FAA AC 150/5300-18B. THIS ALP WAS UPDATED IN ACCORDANCE WITH FAA AC 150/5300-13A AND 150/5070-6B IN JUNE 2013.
- VERTICAL DATUM IS NAVD 1988 USING GEOID12A AND REFERENCING PACS "ORT A 2"
- HORIZONTAL DATUM IS NAD83 (2007). DRAWING COORDINATES ARE ALASKA STATE PLANE ZONE 2, U.S. SURVEY FEET, UNLESS NOTED OTHERWISE.
- THIS DRAWING IS A COMPILATION OF SELECTED MAPPING DATA. IT IS NOT A COMPLETE SURVEY.

AIRPORT DATA

ITEM	EXISTING	ULTIMATE
ICAO IDENTIFIER	PAOR	SAME
NATIONAL AIRPORT IDENTIFIER	ORT	SAME
FAA SITE NUMBER	50544.*A	SAME
AIRPORT REFERENCE CODE (ARC)	B-III	SAME
AIRPORT ELEVATION (NAVD88)	1720.10	SAME
MEAN MAX. TEMPERATURE, HOTTEST MONTH	69°F / JULY	SAME
OBSTRUCTION SURVEY SOURCE & TYPE	AOC (SEE NOTES)	SAME
MAGNETIC DECLINATION, YEAR, RATE OF CHANGE	22°10'29"E, 2010 0°23'W / YEAR	SAME
AIRPORT AND TERMINAL NAVIGATION AIDS	GPS, VOR, DME, NDB, ROTATING BEACON, SEG. CIRCLE, ASOS	SAME

RUNWAY 5-23 DATA

ITEM	EXISTING	ULTIMATE
FAR PART 77 APPROACH CATEGORY (UTILITY, OTHER THAN UTILITY)	OTHER THAN UTILITY	SAME
FAR PART 77 APPROACH TYPE (V, NPA, PA)	NPA	SAME
RUNWAY DESIGN CODE (RDC)	B-III-5000	SAME
RUNWAY REFERENCE CODE (RRC)	B-III-5000	SAME
DESIGN AIRCRAFT	DC-6	SAME
FAR PART 77 APPROACH SLOPE	34:1	SAME
APPROACH TSS SLOPE	20:1	SAME
VISIBILITY MINIMUM	≥1 SM	SAME
RUNWAY SURFACE	ASPHALT	SAME
PAVEMENT STRENGTH (SW,DW,DTW x1000lbs)	75, 200, 300	SAME
TRUE MEAN BEARING	N 76°05'32" E	SAME
MAXIMUM ELEVATION ABOVE MSL	N/A	SAME
EFFECTIVE GRADE	0.028%	SAME
RUNWAY TOUCHDOWN ZONE ELEVATIONS (NAVD 88)	RW 5: 1720.10 RW 23: 1718.83	SAME
RUNWAY DIMENSIONS	100' x 5100'	SAME
RUNWAY SAFETY AREA (RSA) DIMENSIONS	300' x 6300'	SAME
RSA LENGTH BEYOND RW ENDS	600'	SAME
RUNWAY PROTECTION ZONE (RPZ) DIMENSIONS	1000'x500'x700'	SAME
RUNWAY OBJECT FREE AREA (ROFA) DIMENSIONS	800' x 6300'	SAME
ROFA LENGTH BEYOND RW ENDS	600'	SAME
RUNWAY OBSTACLE FREE ZONE (ROFZ) DIMENSIONS	400' x 5500'	SAME
RUNWAY LIGHTING TYPE	MIRL	SAME
RUNWAY MARKING TYPE (P, NP, NONE)	NP	SAME
RUNWAY VISUAL APPROACH AIDS	PAPI, REIL	SAME
RUNWAY LANDING AIDS	VOR, RNAV/GPS, DME	SAME

TAXIWAY DATA

ITEM	EXISTING	ULTIMATE
TAXIWAY DESIGN GROUP	3	SAME
TAXIWAY / TAXILANE WIDTH	50' / 50'	SAME
TAXIWAY SHOULDER WIDTH	10'	SAME
SEPARATION FROM PARALLEL RUNWAY	320'	SAME
TAXIWAY / TAXILANE SAFETY AREA (TSA) WIDTH	118' / 118'	SAME
TAXIWAY / TAXILANE OBJECT FREE AREA (TOFA) WIDTH	186' / 162'	SAME
TAXIWAY LIGHTING	MTL	SAME
TAXIWAY MARKING (P, NP, NONE)	NP	SAME

NON-STANDARD CONDITIONS

ITEM	STANDARD	EXISTING	ULTIMATE
BLAST PAD LENGTH	200'	150'	SAME
BLAST PAD WIDTH	140'	150'	SAME
TAXIWAY SHOULDER WIDTH	20'	10'	SAME
SEWAGE LAGOON	10,000'	3,500'	SAME
LANDFILL	10,000'	2,500'	SAME

STATE OF ALASKA
 DEPARTMENT OF TRANSPORTATION AND PUBLIC FACILITIES
 NORTHERN REGION

DESIGN _LLC
 DRAWN _TKK
 CHECKED _JGL

BY DATE 6/26/15 AS-BUILT REVISIONS

APPROVED
 ALBERT M.L. BECK, P.E.

DESIGN GROUP CHIEF

DATE 6/26/15

DATE 6/26/15

DATE 6/26/15

As-Built -
 AIRPORT LAYOUT PLAN CONDITIONAL APPROVAL SUBJECT TO
 ALP APPROVAL LETTER DATED 6/26/15
 FAA-APRPAGE REVIEW NUMBER
 P.J. Zylstra
 FAA, AIRPORTS DIVISION ALASKAN REGION, AAL-601

APPROVAL LETTER DATED 6/26/15

DATE 6/26/15

DATE 6/26/15

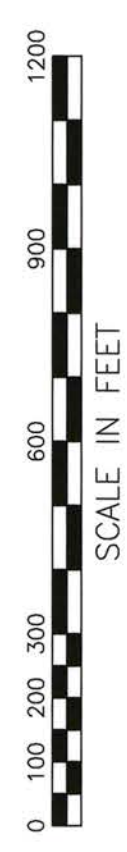
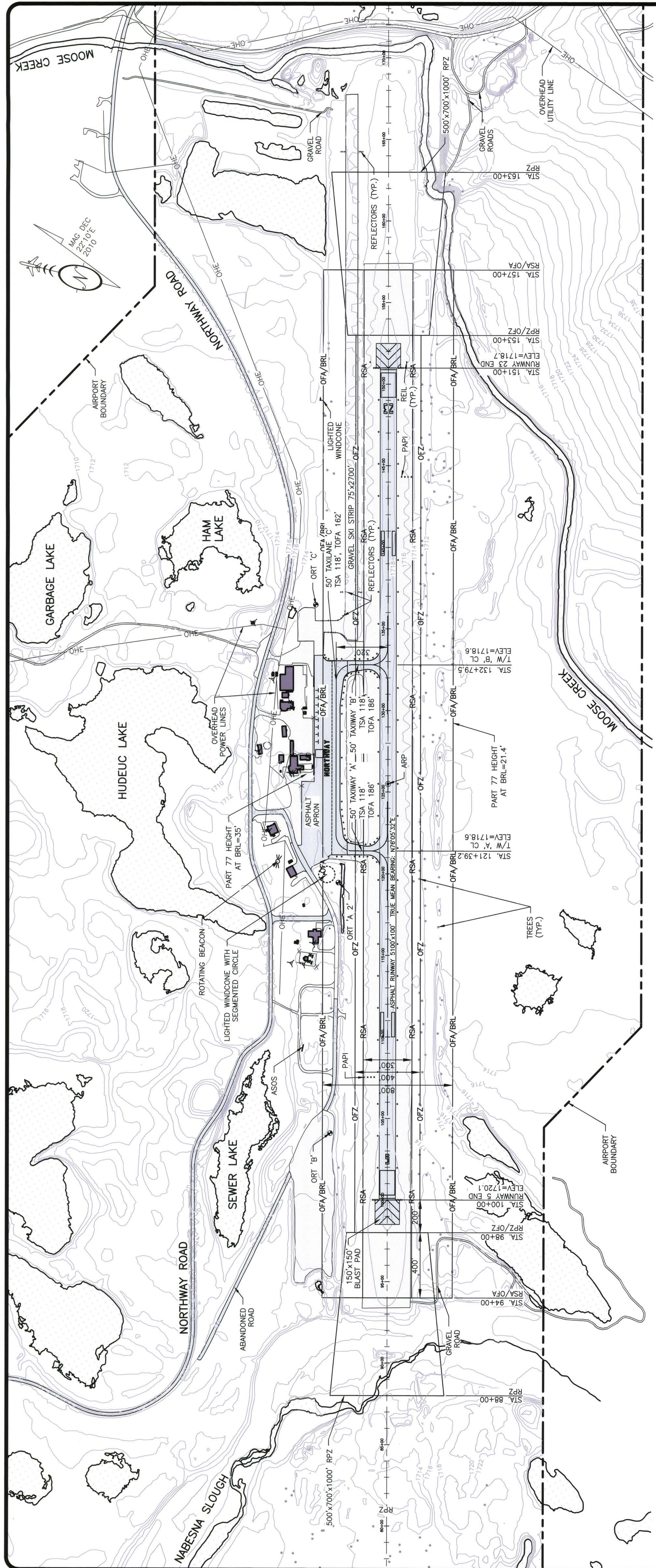
DATE 6/26/15

DATE 6/26/15

DATE 6/26/15

NORTHWAY AIRPORT
 NORTHWAY, ALASKA
 AIRPORT DATA

SHEET 1 OF 6



SCALE IN FEET

NOTES:

- MULTIPLE SMALL TREES PENETRATE THE OBSTACLE FREE ZONE (OFZ) ON THE SOUTH SIDE OF THE RUNWAY.

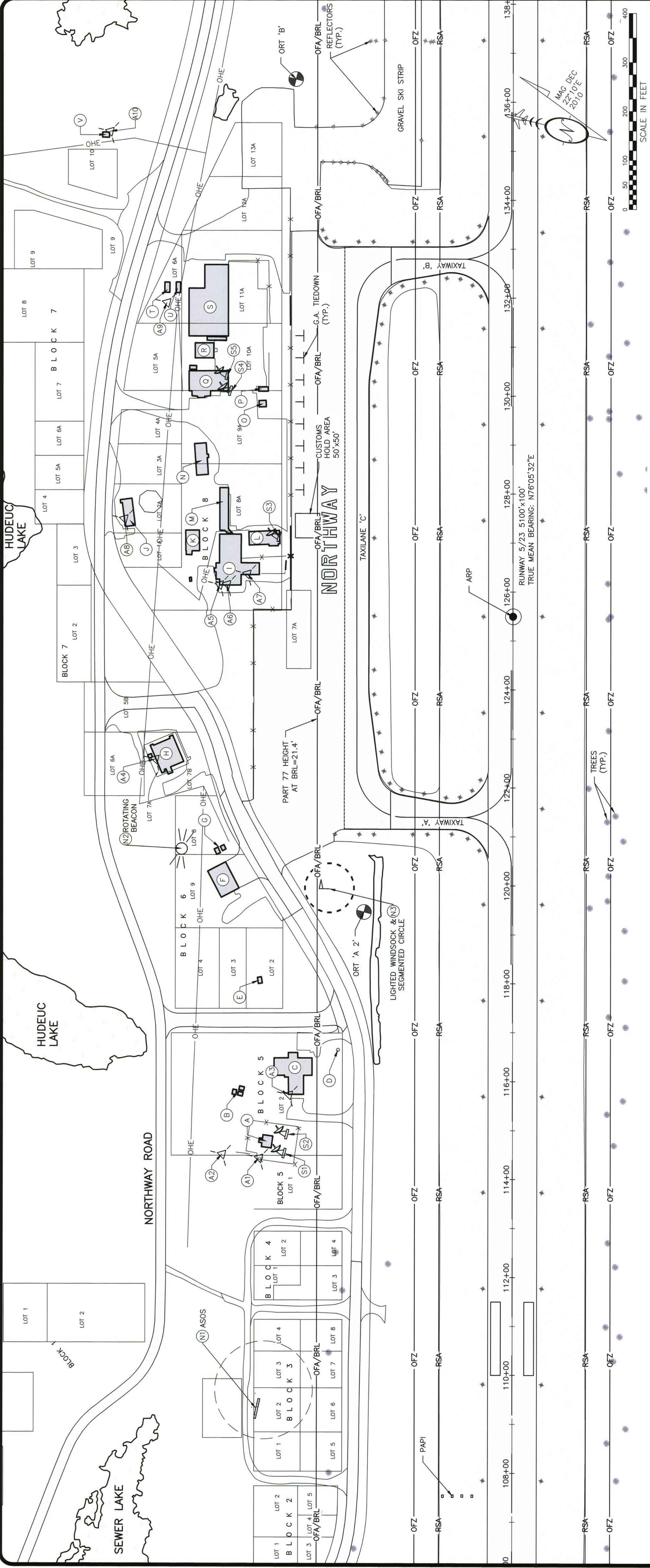
DESIGN	LLC
DRAWN	TCK
CHECKED	JGL

BY	DATE	AS-BUILT	REVISIONS
2	6/26/15		

STATE OF ALASKA
 DEPARTMENT OF TRANSPORTATION AND PUBLIC FACILITIES
 NORTHERN REGION
 APPROVED: *Albert M. Beck* DATE: *6/18/15*
 ALBERT M.L. BECK, P.E. DESIGN GROUP CHIEF

AIRPORT LAYOUT PLAN CONDITIONAL APPROVAL SUBJECT TO
 ALP APPROVAL LETTER DATED _____
 FAA AIRSPACE REVIEW NUMBER: _____
 DATE: _____
 FAA, AIRPORTS DIVISION ALASKAN REGION, AAL-601

NORTHWAY AIRPORT
 NORTHWAY, ALASKA
 AIRPORT LAYOUT PLAN
 SHEET 2 OF 6



BUILDINGS/FACILITIES

BLD/FAC	DESCRIPTION	STATION/OFFSET	TOP ELEV.	OBST. MARKING	DISPOSITION
(A)	COMMUNICATIONS BUILDING	114+80/500'LT	1728.43	NONE	N/A
(B)	MISC. STRUCTURE	115+80/560'LT	1722.41	NONE	N/A
(C)	FLIGHT SERVICE STATION	116+30/450'LT	1743.51	YES	NO ARS OBST
(D)	FLAGPOLE	116+65/355'LT	1745.97	NONE	REMOVE/LIGHT
(E)	CONC. BUILDING	118+10/520'LT	1726.25	NONE	N/A
(F)	SREB	120+10/590'LT	1736.16	NONE	N/A
(G)	ELECTRICAL EQUIP. ENCLOSURES	120+70/590'LT	1723.89	NONE	N/A
(H)	NORTHWAY FIRE STATION	122+70/710'LT	1742.75	NONE	N/A
(I)	NORTHWAY LODGE	126+60/580'LT	1734.88	NONE	N/A
(J)	POST OFFICE TRAILER	127+60/790'LT	1731.98	NONE	N/A
(K)	LAUNDRY	127+00/650'LT	1726.55	NONE	N/A
(L)	HOUSE TRAILER	127+10/510'LT	1733.59	NONE	N/A
(M)	MOTEL ROOMS	127+70/590'LT	1723.25	NONE	N/A
(N)	TRAILER	128+70/640'LT	1729.61	NONE	N/A

BUILDINGS/FACILITIES

BLD/FAC	DESCRIPTION	STATION/OFFSET	TOP ELEV.	OBST. MARKING	DISPOSITION
(O)	SHED	129+80/510'LT	1721.99	NONE	N/A
(P)	SHED	130+10/510'LT	1722.15	NONE	N/A
(Q)	U.S. CUSTOMS	130+30/620'LT	1727.65	NONE	N/A
(R)	HOUSE	131+00/630'LT	1733.80	NONE	N/A
(S)	MAINTENANCE HANGAR	132+00/620'LT	1736.21	NONE	N/A
(T)	SHED	132+20/710'LT	1722.51	NONE	N/A
(U)	SHED	132+20/680'LT	1722.78	NONE	N/A
(V)	MISC. STRUCTURE	135+30/830'LT	1728.15	NONE	N/A

NAVAIDS

BLD/FAC	DESCRIPTION	STATION/OFFSET	TOP ELEV.	OBST. MARKING	DISPOSITION
(N1)	ASOS	109+30/520'LT	1749.06	NONE	N/A
(N2)	ROTATING BEACON	120+75/675'LT	1751.39	NONE	N/A
(N3)	LIGHTED WINDSOCK	119+95/375'LT	1736.42	NONE	N/A

SATELLITE DISHES/ANTENNAS

BLD/FAC	DESCRIPTION	STATION/OFFSET	TOP ELEV.	OBST. MARKING	DISPOSITION
(S1)	SATELLITE DISH	114+50/465'LT	1733.68	NONE	N/A
(S2)	SATELLITE DISH	114+90/460'LT	1733.89	NONE	N/A
(S3)	SATELLITE DISH	127+10/480'LT	1738.55	NONE	N/A
(S4)	SATELLITE DISH	130+10/575'LT	1737.55	NONE	N/A
(S5)	SATELLITE DISH	130+40/580'LT	1736.83	NONE	N/A
(A1)	ANTENNA	114+45/520'LT	1752.56	NONE	N/A
(A2)	ANTENNA	114+50/595'LT	1760.25	NONE	N/A
(A3)	ANTENNA	115+70/460'LT	1740.03	NONE	N/A
(A4)	ANTENNA	122+80/730'LT	1762.48	NONE	N/A
(A5)	ANTENNA	126+15/600'LT	1731.35	NONE	N/A
(A6)	ANTENNA	126+15/585'LT	1731.83	NONE	N/A
(A7)	ANTENNA	126+35/540'LT	1728.79	NONE	N/A
(A8)	ANTENNA	127+50/795'LT	1734.38	NONE	N/A
(A9)	ANTENNA	131+90/710'LT	1765.51	NONE	N/A
(A10)	ANTENNA	135+40/825'LT	1774.00	NONE	N/A

DESIGN: LLC
DRAWN: TCK
CHECKED: JGL

BY: 6/26/15 AS-BUILT
DATE: 6/26/15
REVISIONS:

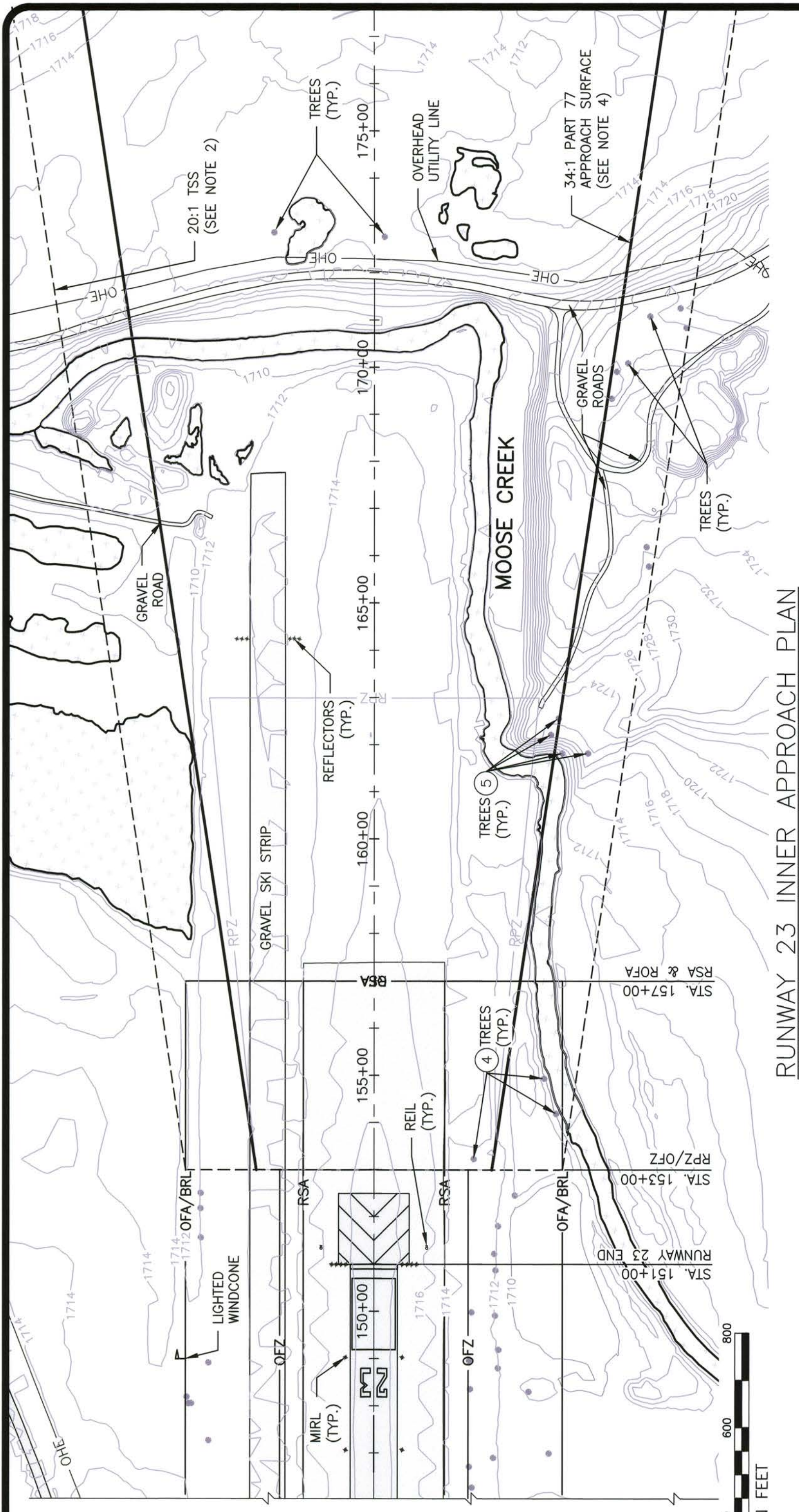
APPROVED: Albert M.L. Beck, P.E.
DESIGN GROUP CHIEF
ALBERT M.L. BECK, P.E.

STATE OF ALASKA
DEPARTMENT OF TRANSPORTATION AND PUBLIC FACILITIES
NORTHERN REGION

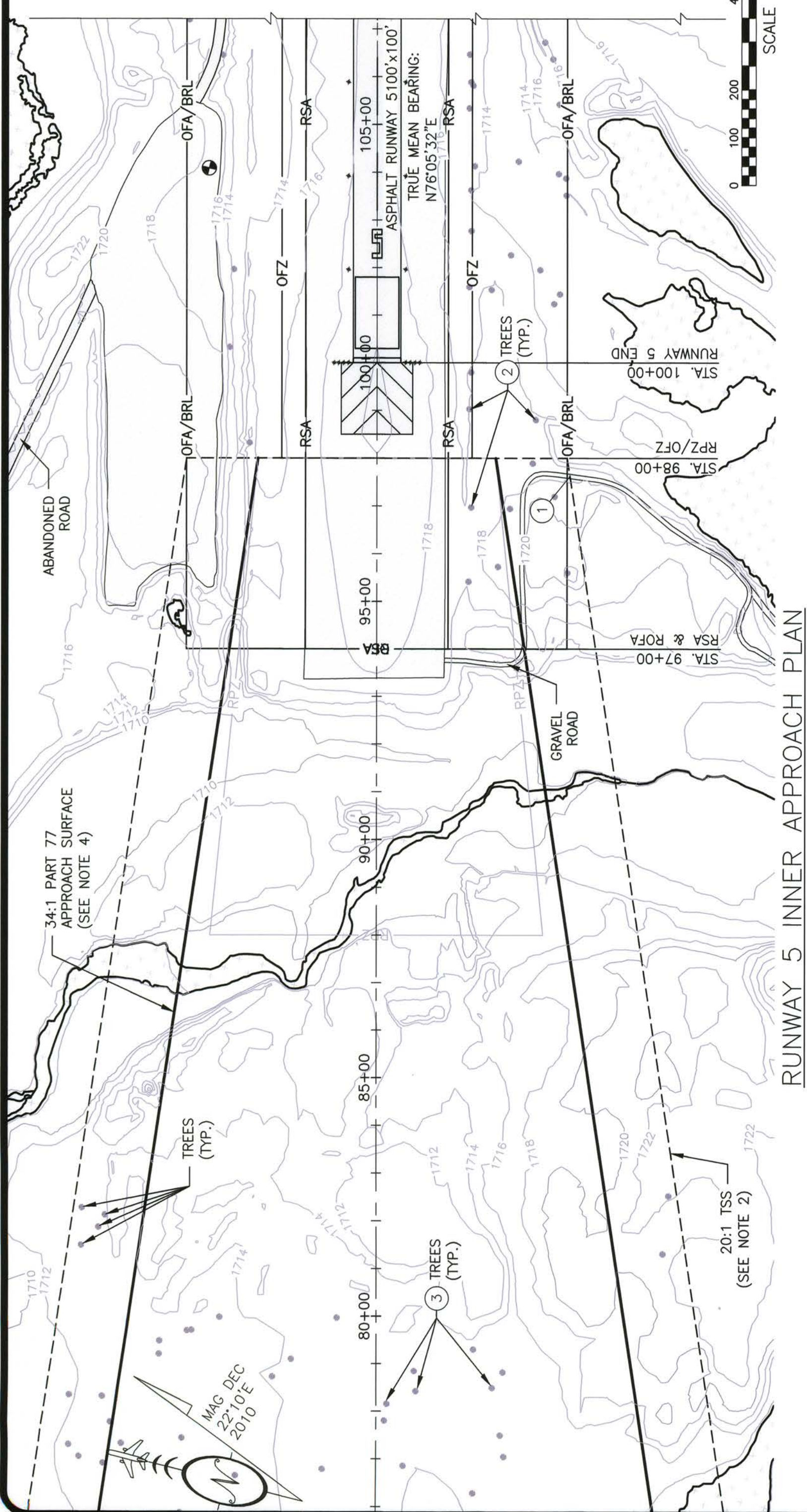
AIRPORT LAYOUT PLAN CONDITIONAL APPROVAL SUBJECT TO
ALP APPROVAL LETTER DATED: _____
FAA AIRSPACE REVIEW NUMBER: _____
DATE: 6/18/15
FAA, AIRPORTS DIVISION ALASKAN REGION, AAL-601

NORTHWAY AIRPORT
NORTHWAY, ALASKA
TERMINAL AREA PLAN

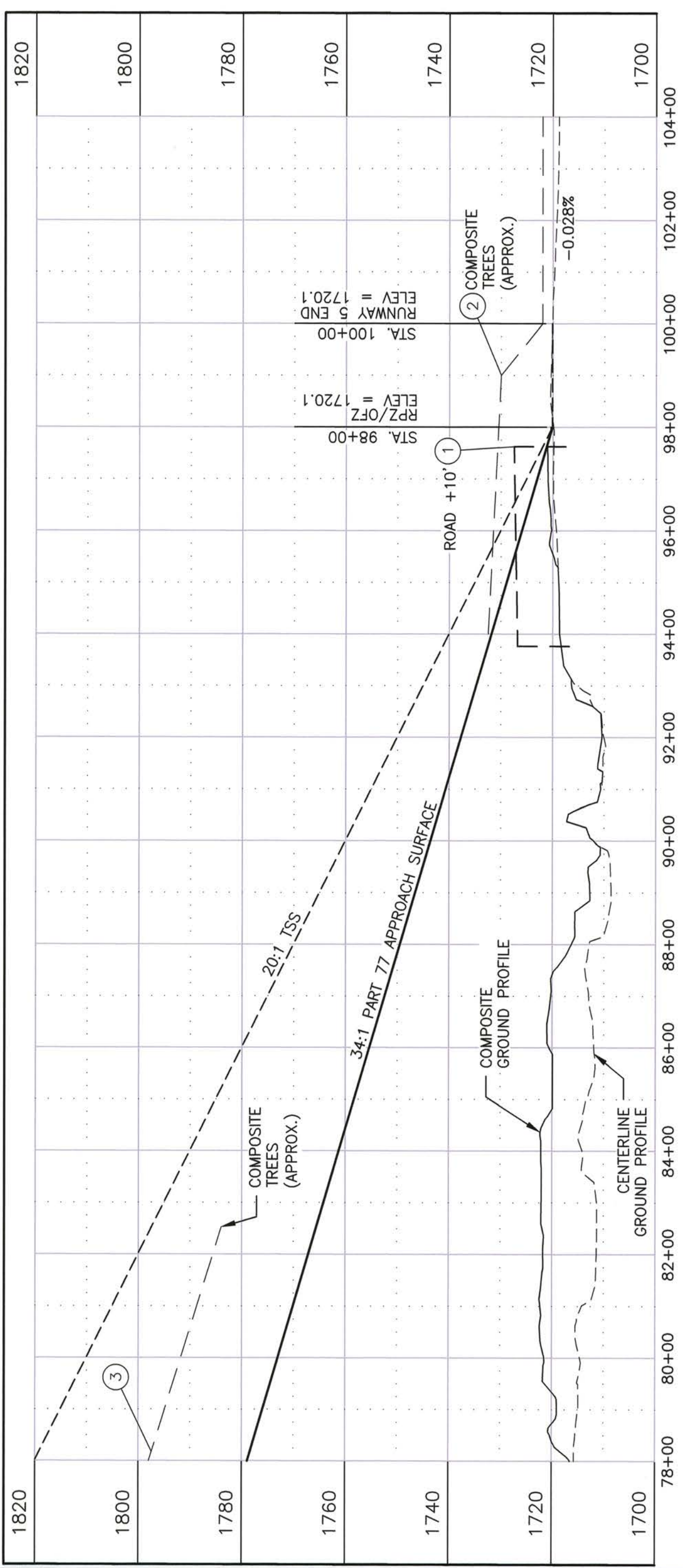
SHEET **3** OF **6**



RUNWAY 5 INNER APPROACH PLAN



RUNWAY 23 INNER APPROACH PLAN



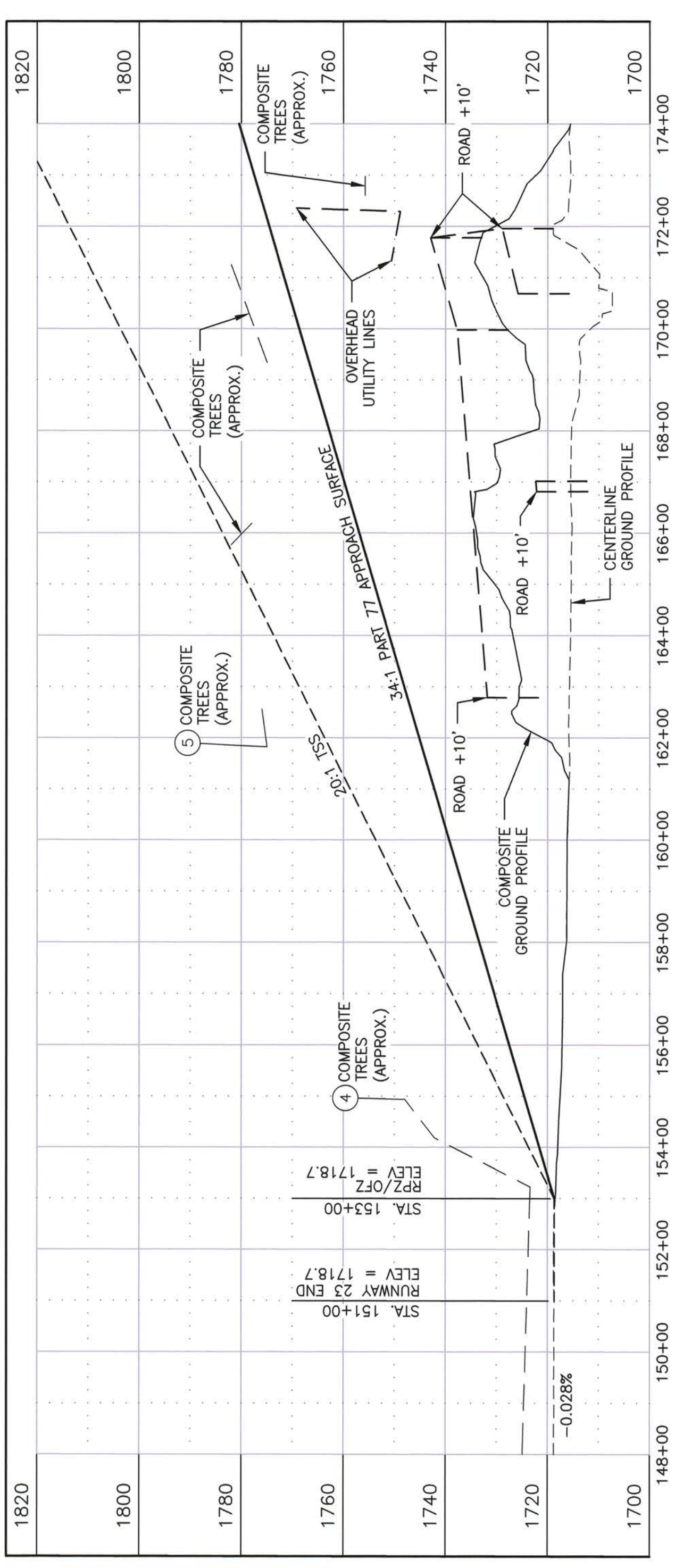
RUNWAY 5 INNER APPROACH PROFILE

OBSTRUCTION TABLE (INNER PORTION R/W 5)

ID #	DESCRIPTION	STATION/OFFSET	SURFACE ELEV.	SURFACE PENETRATED	SURFACE PENETRATION	DISPOSITION
①	ROAD +10'	97+62/405' RT	1727.5	TSS	5.5'	CLOSE/RELOCATE
①	ROAD +10'	97+62/405' RT	1727.5	PART 77	6.3'	CLOSE/RELOCATE
②	TREES	98+80/330' RT	1729.9	TSS	9.8'	REMOVE
②	TREES	98+80/330' RT	1729.9	PART 77	9.8'	REMOVE
③	TREES	78+16/22' RT	1797.3	PART 77	19.1'	REMOVE

GENERAL NOTES:

- APPROACH END OF RUNWAYS EXPECTED TO SUPPORT INSTRUMENT NIGHT OPERATIONS, SERVING GREATER THAN APPROACH CATEGORY B AIRCRAFT (TYPE 5, TABLE 3-2, AC 150/5300-13A)
- TSS DIMENSIONS = 800'x3800'x10000'
- TSS SLOPE EXTENDS 10,000' AT 20:1
- PART 77 APPROACH SURFACE DIMENSIONS = 500'x3500'x10000'
- PART 77 APPROACH SURFACE SLOPE EXTENDS 10,000' AT 34:1
- PART 77 ROAD OBSTRUCTION HEIGHTS ARE INCLUDED (10' FOR PRIVATE ROAD & 15' FOR PUBLIC ROAD)
- R/W 5 HAS OBSTACLE FREE ZONE PENETRATIONS & THRESHOLD SITING SURFACE PENETRATIONS
- R/W 23 HAS NO OBSTACLE FREE ZONE PENETRATIONS, BUT HAS THRESHOLD SITING SURFACE PENETRATIONS
- R/W 5/23 DOES NOT HAVE PUBLISHED DEPARTURE PROCEDURES



RUNWAY 23 INNER APPROACH PROFILE

OBSTRUCTION TABLE (INNER PORTION R/W 5)

ID #	DESCRIPTION	STATION/OFFSET	ELEV.	SURFACE ELEV.	SURFACE PENETRATED	SURFACE PENETRATION	DISPOSITION
④	TREES	155+00/360' RT	1748.0	1728.3	TSS	19.7'	REMOVE
④	TREES	155+00/360' RT	1748.0	1724.4	PART 77	23.6'	REMOVE
⑤	TREES	161+80/455' RT	1775.2	1762.8	TSS	12.4'	REMOVE
⑤	TREES	161+80/455' RT	1775.2	1744.6	PART 77	30.6'	REMOVE

DESIGN LLC
 DRAWN TCK
 CHECKED JGL

BY BJ DATE 6/26/15 AS-BUILT
 REVISIONS

APPROVED Albert M. Beck DATE 6/18/15 DESIGN GROUP CHIEF
 ALBERT M.L. BECK, P.E.

STATE OF ALASKA
 DEPARTMENT OF TRANSPORTATION AND PUBLIC FACILITIES
 NORTHERN REGION

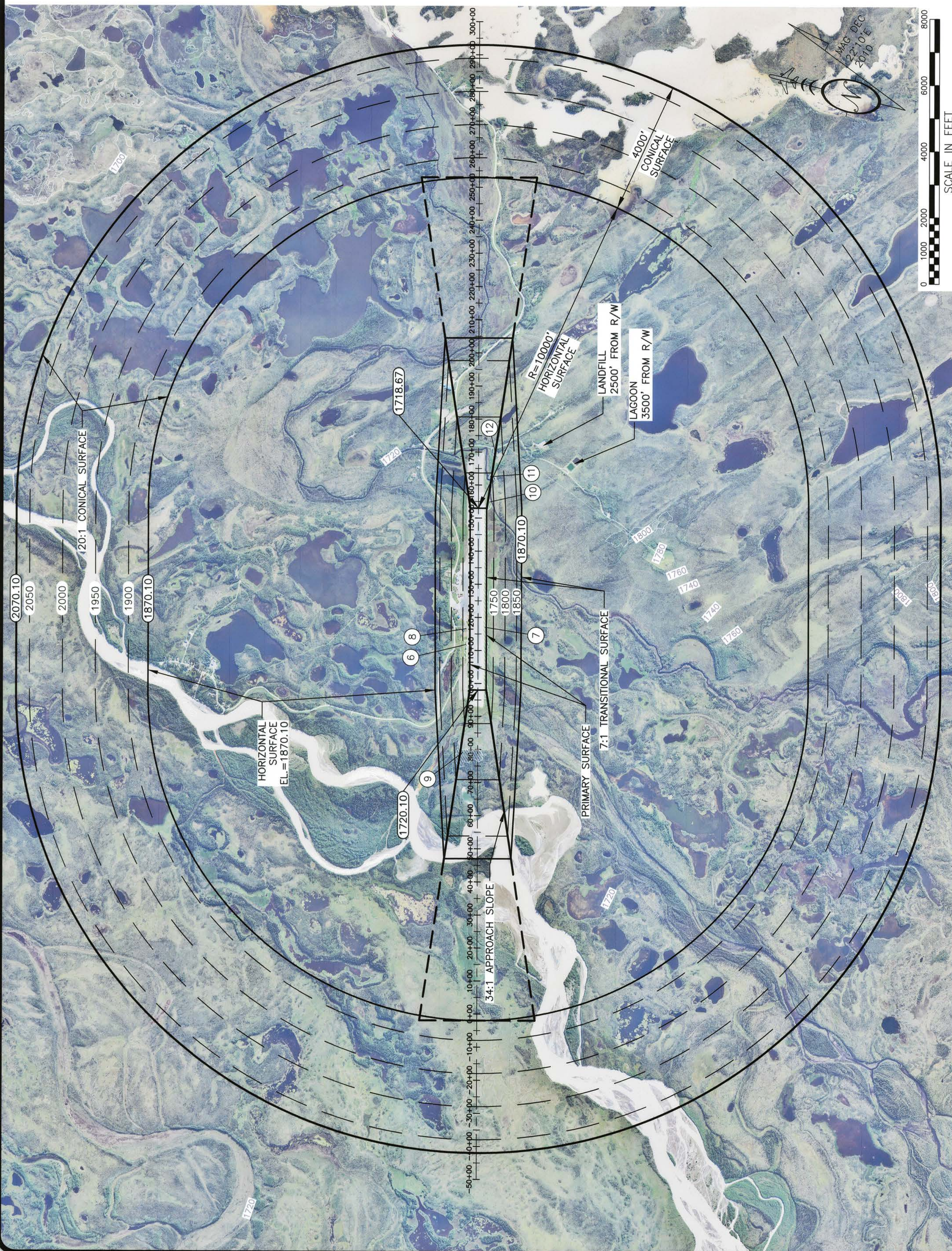
AIRPORT LAYOUT PLAN CONDITIONAL APPROVAL SUBJECT TO
 ALP APPROVAL LETTER DATED _____
 FAA AIRSPACE REVIEW NUMBER: _____

FAA, AIRPORTS DIVISION ALASKAN REGION, AAL-601
 DATE: _____

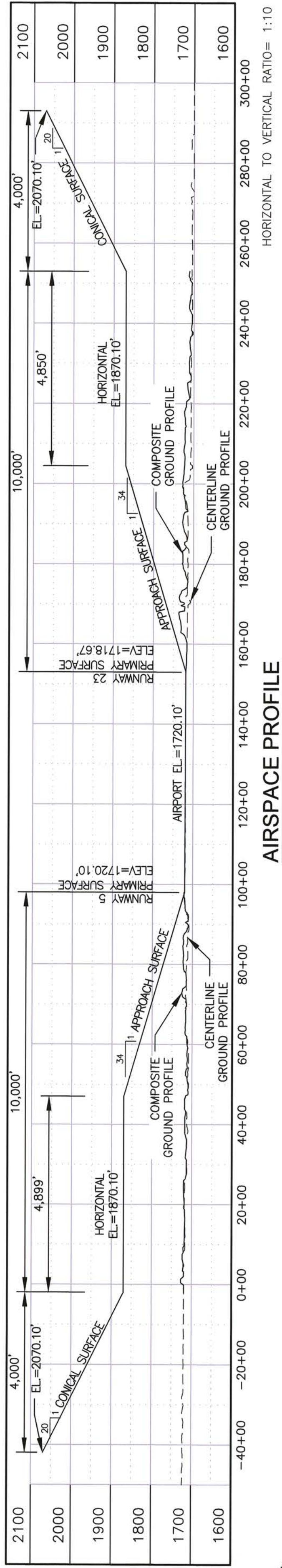
NORTHWAY AIRPORT
 NORTHWAY, ALASKA

INNER PORTION OF APPROACH SURFACE

SHEET 4 OF 6



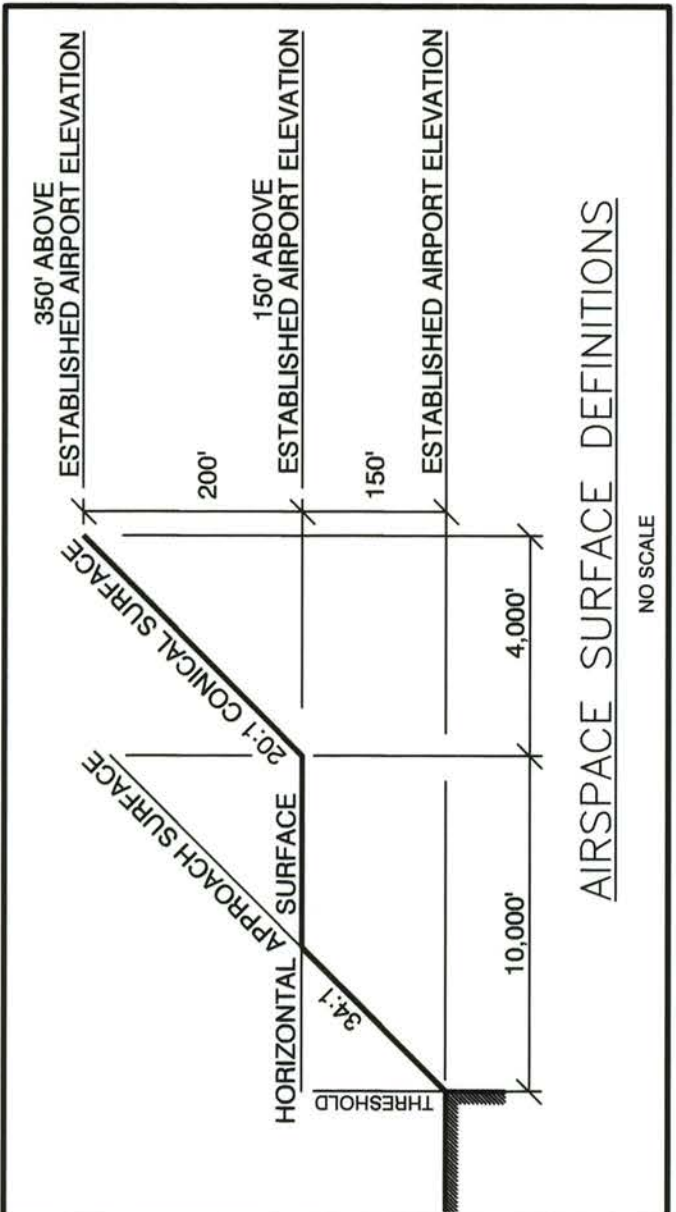
AIRSPACE PLAN



AIRSPACE PROFILE

LEGEND

(1870.10)	AIRSPACE ELEVATION (SURFACE DIVIDERS)
---	AIRSPACE SURFACE DIVIDERS (NON CONTROLLING)
---	AIRSPACE ELEVATION (50' INCREMENTS)
---	EXISTING GROUND ELEVATIONS
---	RUNWAY CENTERLINE (EXTENDED)
---	AIRSPACE TREE OBSTRUCTIONS



ULTIMATE RUNWAY F.A.R. PART 77 DIMENSIONS OTHER THAN UTILITY, NPA, >1 S.M.

DESCRIPTION	DIMENSION
ESTABLISHED AIRPORT ELEVATION	1720.10'
RUNWAY THRESHOLD ELEVATION	RW5: 1720.10' \ RW23: 1718.67
PRIMARY SURFACE	500'x5500'
HORIZONTAL SURFACE ELEVATION	1870.10'
HORIZONTAL SURFACE RADIUS	10000'
APPROACH SURFACE	500'x3500'x10000'
APPROACH SURFACE SLOPE	34:1
CONICAL SURFACE WIDTH	4000' @ 20:1
TRANSITIONAL SURFACE SLOPE	7:1

F.A.R. PART 77 SURFACE OBSTRUCTION TABLE

ID #	DESCRIPTION	STATION/OFFSET	ELEV.	SURFACE ELEV.	SURFACE PENETRATED	SURFACE PENETRATION	DISPOSITION
6	TREES (HF)	111+70/375' LT	1754	1738	TRANSITIONAL	16'	REMOVE
7	TREES	ALL RW/200' RT	1722±	1719	TRANSITIONAL	±3'	REMOVE
8	FLAGPOLE	116+60/350' LT	1746	1736	TRANSITIONAL	10'	RELOCATE/OBST. LIGHTING
9	TREES (HF)	79+20/460' RT	1799	1775	APPROACH	26'	REMOVE
10	TREES (HF)	154+90/360' RT	1748	1736	APPROACH	12'	REMOVE
11	TREES (HF)	162+50/390' RT	1776	1747	TRANSITIONAL	29'	REMOVE
12	TREES (HF)	169+90/510' RT	1775	1770	APPROACH	5'	REMOVE

HP = HIGH POINT

NOTES:

- REFER TO INNER PORTION OF APPROACH SURFACE (SHEET 4) FOR CLOSE IN OBSTRUCTIONS ANALYZED WITH THE TSS AND PART 77 APPROACH SURFACE.
- THERE ARE NO KNOWN HEIGHT RESTRICTIONS.
- REFER TO THE TERMINAL PLAN (SHEET 3) FOR BUILDING LOCATIONS AND ELEVATIONS.
- GROUND SURFACE INFORMATION WAS PROVIDED BY AN AERIAL MAPPING SUBCONTRACTOR. A CAREFUL COMPARISON WITH SURVEYED DATA WAS MADE TO ENSURE THAT ALL INFORMATION MEETS THE ACCURACY REQUIREMENTS ESTABLISHED IN AC 150-5300-18B AND 150-5300-13A.

DESIGN: LLC
 DRAWN: TCK
 CHECKED: JGL

BY: DATE: 6/26/15
 AS-BUILT
 REVISIONS:

APPROVED: *Albert M.L. Beck*
 ALBERT M.L. BECK, P.E. DESIGN GROUP CHIEF

STATE OF ALASKA
 DEPARTMENT OF TRANSPORTATION AND PUBLIC FACILITIES
 NORTHERN REGION

DATE: 6/18/15

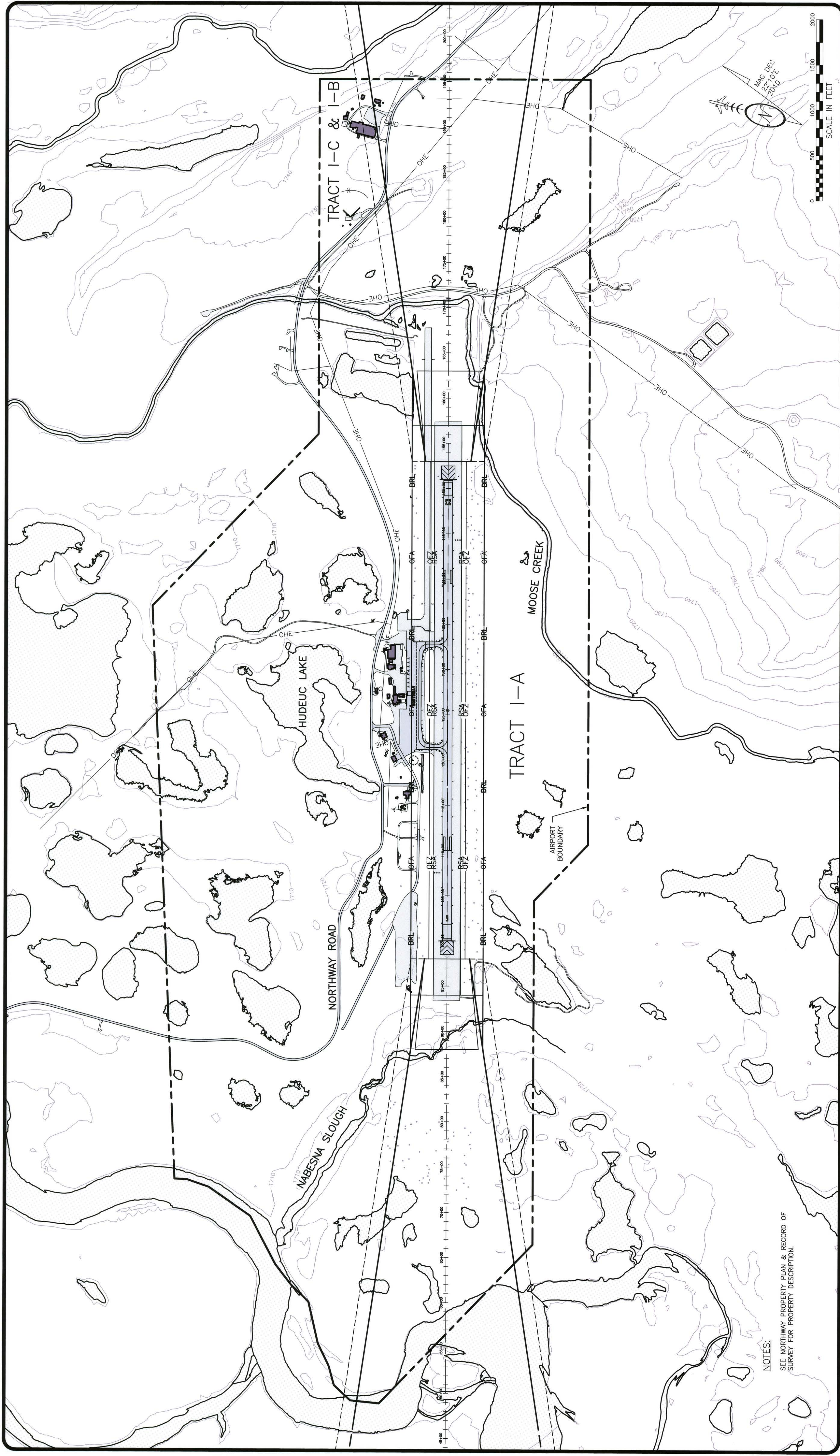
AIRPORT LAYOUT PLAN CONDITIONAL APPROVAL SUBJECT TO ALP APPROVAL LETTER DATED: / /
 FAA AIRSPACE REVIEW NUMBER: / /

FAA, AIRPORTS DIVISION ALASKAN REGION, AAL-601

DATE: / /

NORTHWAY AIRPORT
 NORTHWAY, ALASKA

AIRPORT AIRSPACE (FAR PART 77)



NOTES:
SEE NORTHWAY PROPERTY PLAN & RECORD OF SURVEY FOR PROPERTY DESCRIPTION.

DESIGN: LLC
DRAWN: TCK
CHECKED: JGL

BY	DATE	AS-BUILT	REVISIONS
JL	6/26/15		

STATE OF ALASKA
DEPARTMENT OF TRANSPORTATION AND PUBLIC FACILITIES
NORTHERN REGION

APPROVED: *Albert M.L. Beck* DATE: 6/19/15
ALBERT M.L. BECK, P.E. DESIGN GROUP CHIEF

AIRPORT LAYOUT PLAN CONDITIONAL APPROVAL SUBJECT TO ALP APPROVAL LETTER DATED: _____
FAA AIRSPACE REVIEW NUMBER: _____

DATE: _____
FAA, AIRPORTS DIVISION ALASKAN REGION, AAL-601

NORTHWAY AIRPORT
NORTHWAY, ALASKA
AIRPORT PROPERTY MAP

SHEET 6 OF 6

