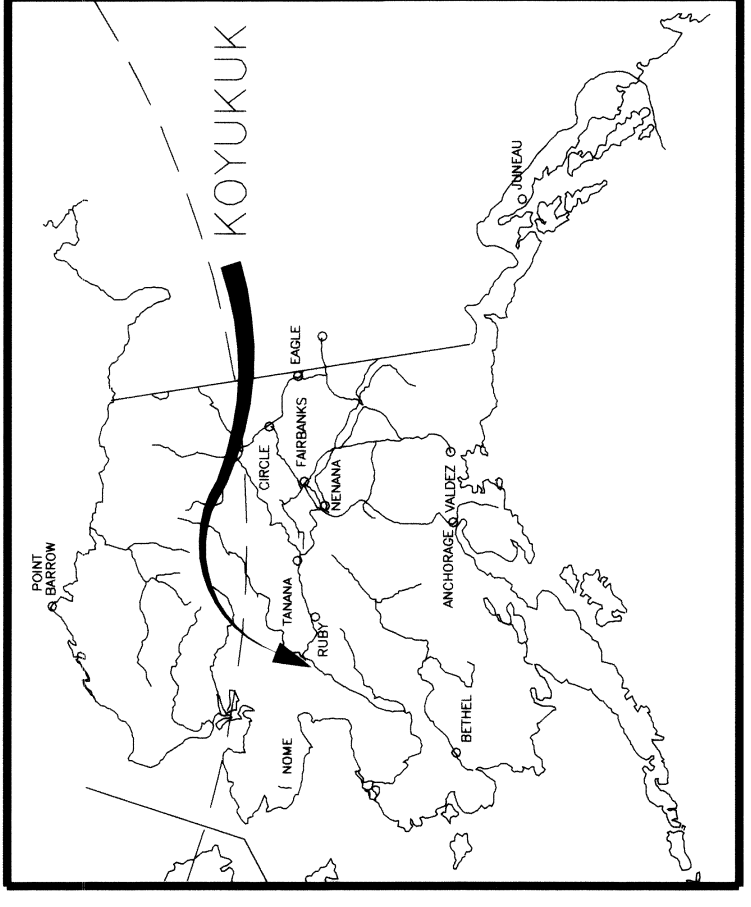
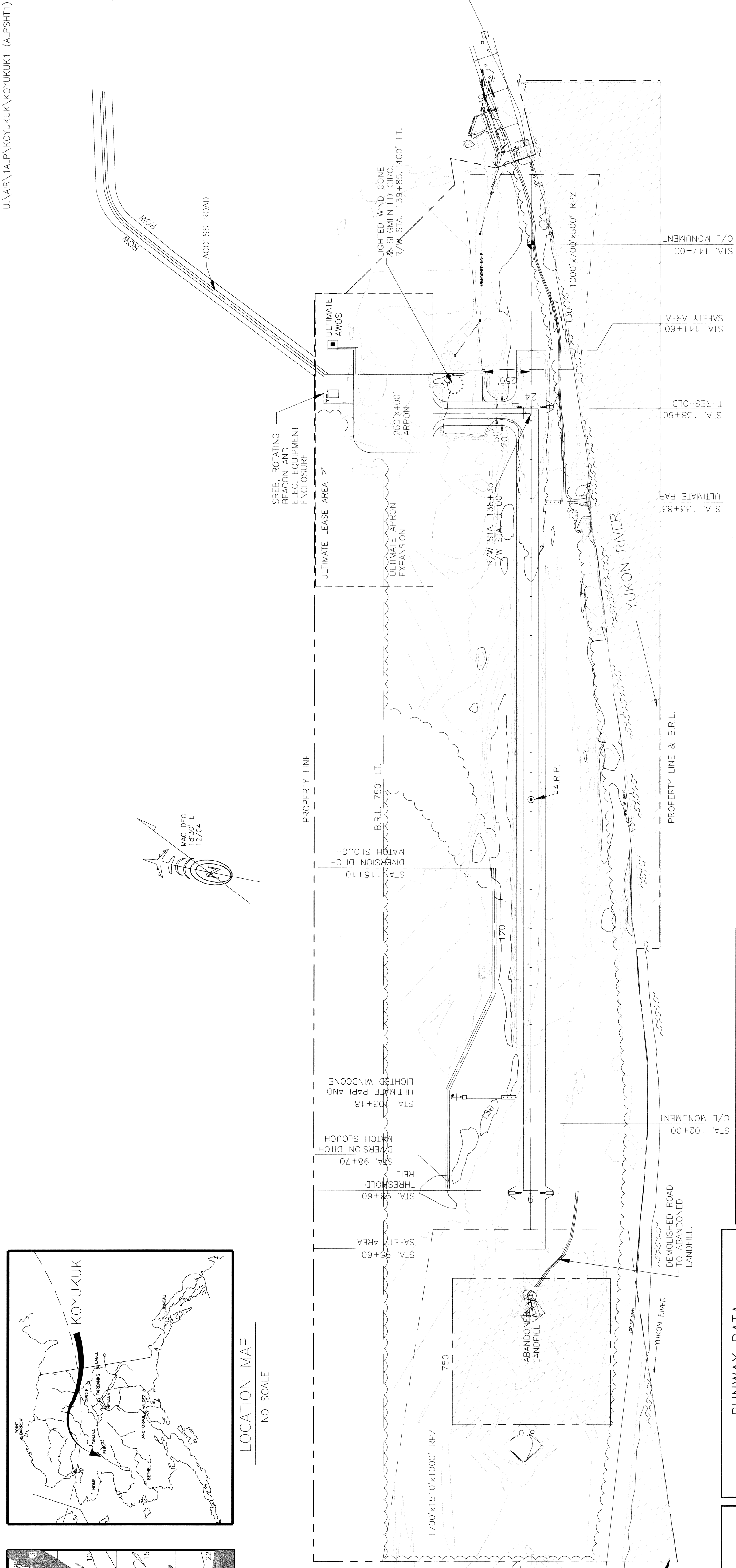


VICINITY MAP
SCALE: 1" = 1 MILE
USGS N1410 (0-4)
KATEEL RIVER MERIDIAN
1962



LOCATION MAP
NO SCALE



AIRPORT DATA	
AIRPORT ELEVATION (NAVD 88)	EXISTING: 143.96' / ULTIMATE: SAME
AIRPORT REFERENCE CODE	B-II
MEAN DAILY MAX. TEMP. HOTTEST MONTH (JULY)	67.4°F
TAXIWAY LIGHTING	MIL
RAMP LIGHTING	NONE
NAVIGATION AIDS	GPS
COMMUNICATION AIDS	NONE
AIRPORT REFERENCE POINT (ARP) STA. 118+80	LAT. N64°52'22.88" / LONG. W157°45'49.53"
THRESHOLD 6 STA. 98+60	LAT. N64°52'29.16" / LONG. W157°44'35.00"
THRESHOLD 24 STA. 138+60	LAT. N64°52'36.63" / LONG. W157°45'04.06"

- NOTES:
- NO OFZ OBJECT PENETRATIONS.
 - NO THRESHOLD SITING SURFACE OBJECT PENETRATIONS.
 - THE GEODETIC COORDINATES WERE DERIVED FROM CONTROLLED GPS WORK DONE BY LCMF, INC. IN 1998.
 - DATA BASE CONTROL YEAR: NAD 83.
 - DIMENSIONS ARE IN ENGLISH UNITS.
 - THE ALASKA STATE PLANE GRID BEARING FOR RUNWAY 06-24 CENTERLINE IS N 79°03'56" E.

RUNWAY DATA	
% WIND COVERAGE	NO DATA
INSTRUMENT RUNWAY	NONE
RUNWAY SURFACE TYPE	GRAVEL
PAVEMENT STRENGTH	N/A
APPROACH SURFACES	34-17/20-1
APPROACH VISIBILITY MINIMUM	3/4 MILE / 2.1 MILE
RUNWAY LIGHTING	MIRL
RUNWAY MARKING	NONE
VISUAL APPROACH AIDS	PAPI/REIL ON RUNWAY 06 / PAPI/REIL ON RUNWAY 24
R/W DIMENSIONS	75'x4000'
R/W SAFETY AREA	150'x4600'
R/W OBSTACLE FREE AREA (ROFA)	500'x4600'
R/W OBSTACLE FREE ZONE (ROFZ)	400'x4400'
T/W WIDTH	50'
T/W SAFETY AREA WIDTH	120'
T/W OFA WIDTH	186'

NONSTANDARD CONDITIONS		
ITEM	STANDARD	EXISTING / ULTIMATE
LANDFILL-R/W SEPARATION	5000'	SAME
T/W DIMENSION	B-II	B-III / SAME

LEGEND	
PROPERTY LINE	EXISTING / ULTIMATE
BUILDING RESTRICTION LINE (B.R.L.)	B.R.L. / SAME
DEVELOPMENT	EXISTING / ULTIMATE
WIND CONE & SEGMENTED CIRCLE	EXISTING / ULTIMATE
WIND CONE ONLY	EXISTING / ULTIMATE
BUILDING	EXISTING / ULTIMATE
ROADWAY	EXISTING / ULTIMATE
AIRPORT REFERENCE POINT	EXISTING / ULTIMATE
ROTATING BEACON	EXISTING / ULTIMATE
PRIMARY MONUMENT	EXISTING / ULTIMATE
THRESHOLD	EXISTING / ULTIMATE
PAPI	EXISTING / ULTIMATE
AVIATION & HAZARD EASEMENT	EXISTING / ULTIMATE

DESIGN: LHM
DRAWN: EJM
CHECKED: DML

BY	DATE	REVISIONS
EJM	6/21/07	AS-BUILT
	7/9/01	FAA APPROVED

STATE OF ALASKA
DEPARTMENT OF TRANSPORTATION AND PUBLIC FACILITIES
NORTHERN REGION-DESIGN AND CONSTRUCTION-AVIATION
APPROVED: *Patricia D. Miller*
DATE: 8/23/07
DESIGN GROUP CHIEF: PATRICIA D. MILLER, P.E.

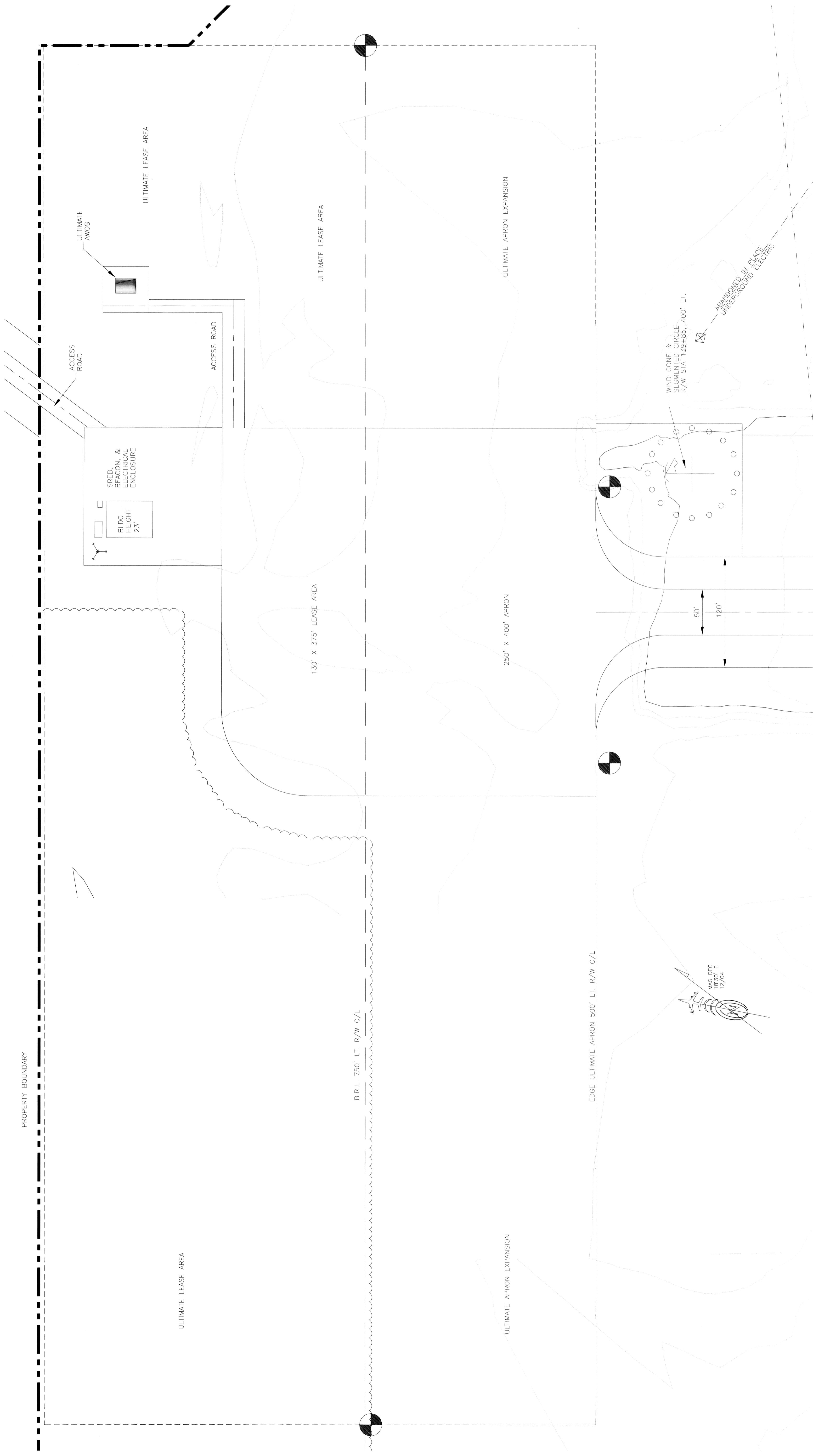
AIRPORT LAYOUT PLAN APPROVED
BY: *Patricia D. Miller* 8/24/07
AIRPORTS DIVISION, PAF
ALASKAN REGION, AAL-601
AIRSPACE REVIEW #01AAL-025NRA

THIS ALP SUPERCEDES ALP DATED 5/24/01.
THIS ALP IS BASED ON AS-BUILT DATED 9/30/2006, KOYUKUK AIRPORT IMPROVEMENTS PROJECT #60902, AP 3-02-0162-03.

KOYUKUK AIRPORT
AIRPORT LAYOUT PLAN
SHEET 1 OF 5

NO WIND DATA AVAILABLE

Koyukuk Airport Layout Plan '07
8-24-07



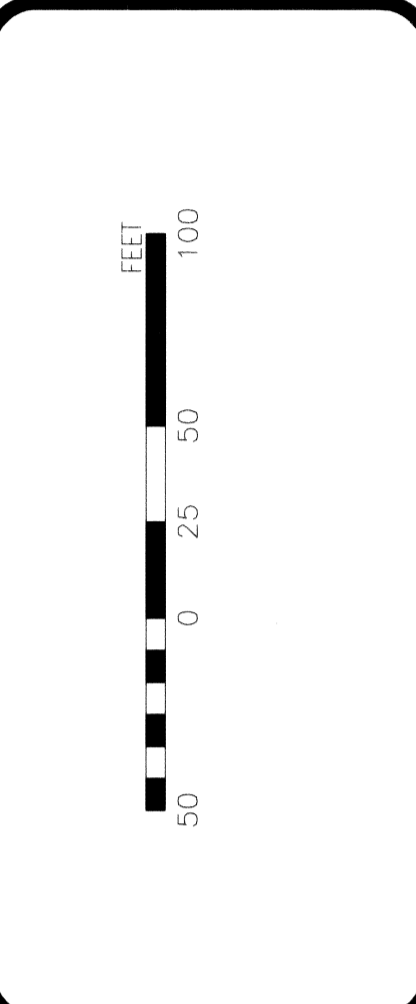
DATA BASE CONTROL YEAR: NAD 83

DESIGN: LHH
 DRAWN: EJM
 CHECKED: CML

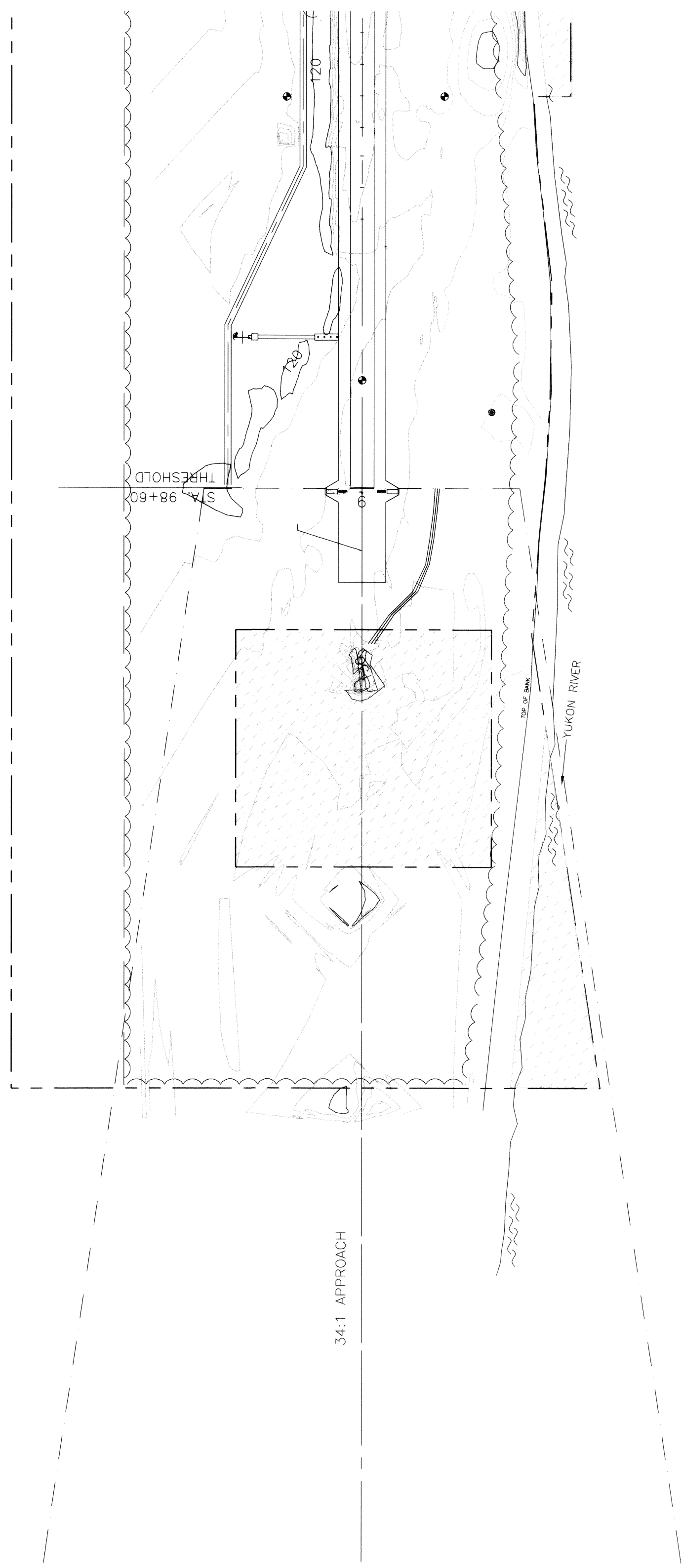
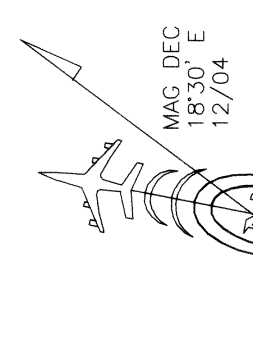
BY	DATE	REVISIONS
EJM	6/21/07	AS-BUILT
	7/9/01	FAA APPROVED

STATE OF ALASKA
 DEPARTMENT OF TRANSPORTATION AND PUBLIC FACILITIES
 NORTHERN REGION-DESIGN AND CONSTRUCTION-AVIATION
 APPROVED
Patricia D. Miller
 PATRICIA D. MILLER, P.E.
 DESIGN GROUP CHIEF
 DATE: 6/23/07

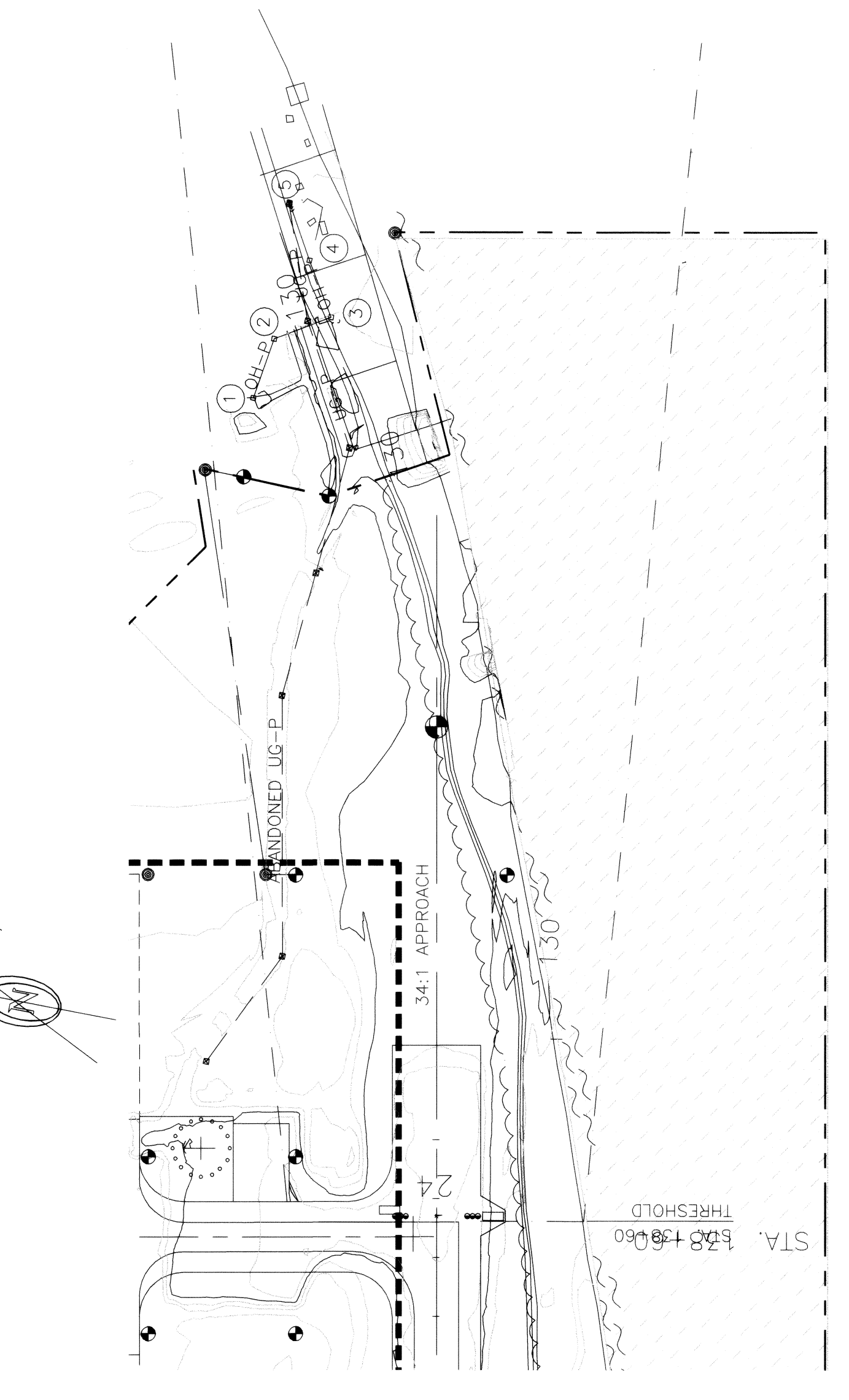
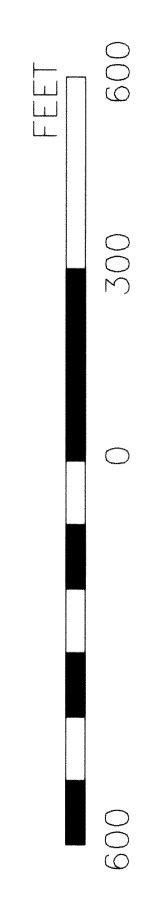
AIRPORT LAYOUT PLAN APPROVED
 BY: *[Signature]*
 DATED: 8/24/07
 AIRPORT DIVISION, AAL-601
 ALASKAN REGION
 AIRSPACE REVIEW #01AAL-025NRA



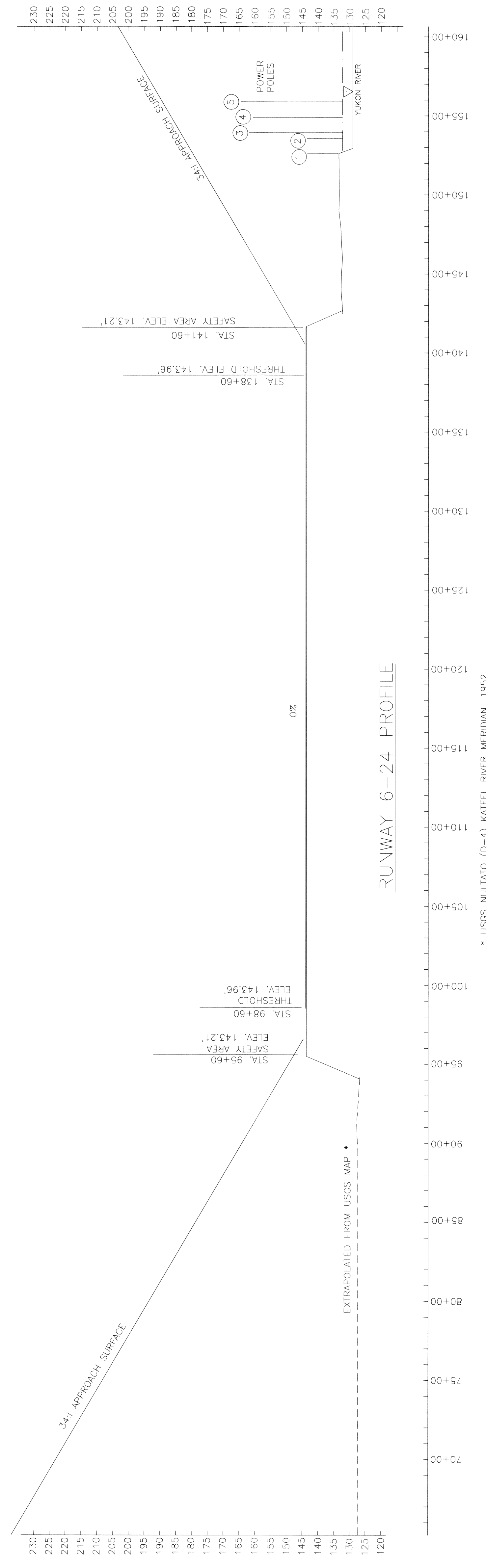
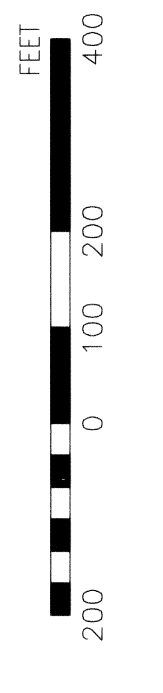
KOYUKUK AIRPORT
 TERMINAL PLAN



RUNWAY 6 INNER APPROACH PLAN



RUNWAY 24 INNER APPROACH PLAN



RUNWAY 6-24 PROFILE

DATA BASE CONTROL YEAR: NAD 83

DESIGN	LHH
DRAWN	EJM
CHECKED	CM

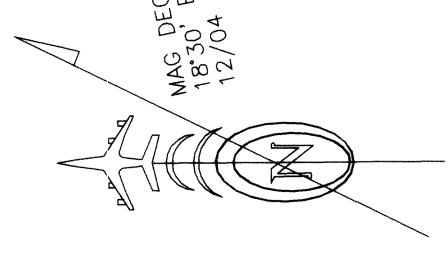
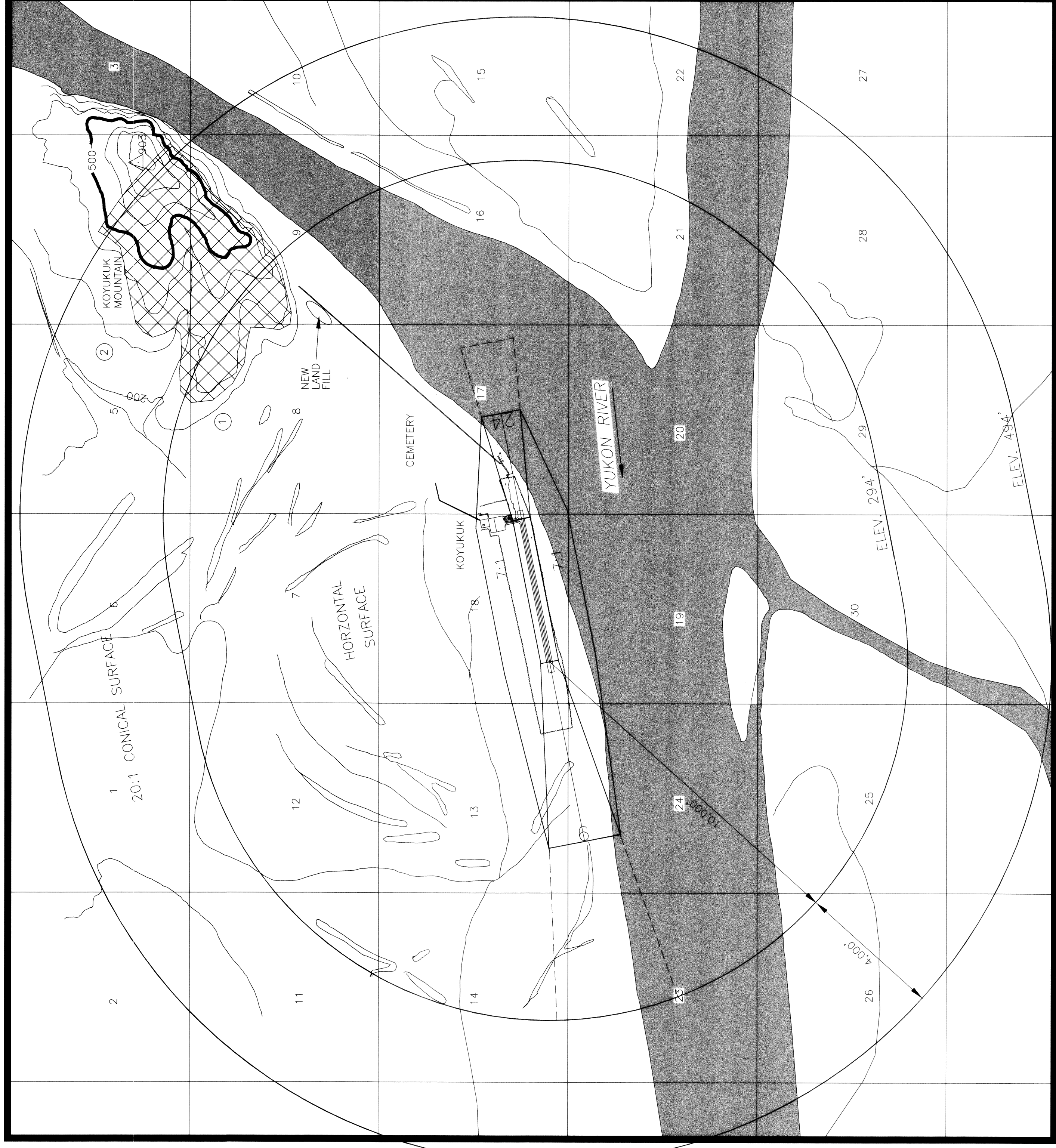
BY	DATE	REVISIONS
EJM	6/21/07	AS-BUILT
	7/9/01	FAA APPROVED

STATE OF ALASKA
 DEPARTMENT OF TRANSPORTATION AND PUBLIC FACILITIES
 NORTHERN REGION-DESIGN AND CONSTRUCTION-AVIATION
 APPROVED
Patricia D. Miller
 PATRICIA D. MILLER, P.E. DESIGN GROUP CHIEF
 DATE: 8/23/07

AIRPORT LAYOUT PLAN APPROVED
 BY LETTER DATED: 8/24/07
 AIRPORTS DIVISION, AAL-601
 ALASKAN REGION, AAL-601
 AIRSPACE REVIEW #01AAL-025NRA

INNER PORTION OF THE APPROACH
 SURFACE PLANS & PROFILE

KOYUKUK AIRPORT



FAR PART 77 OBSTRUCTIONS

#	OBSTRUCTION	LOCATION	TOP ELEV.	SURFACE ELEV.	SURFACE PENETRATION	SURFACE	DISPOSITION
1	KOTYUKUK MT.	N OF R/W 24	400'	294'	+106'	HORIZONTAL	NO ACTION
2	KOTYUKUK MT.	N OF R/W 24	750'	294'-494'	456'-256'	CONICAL	NO ACTION

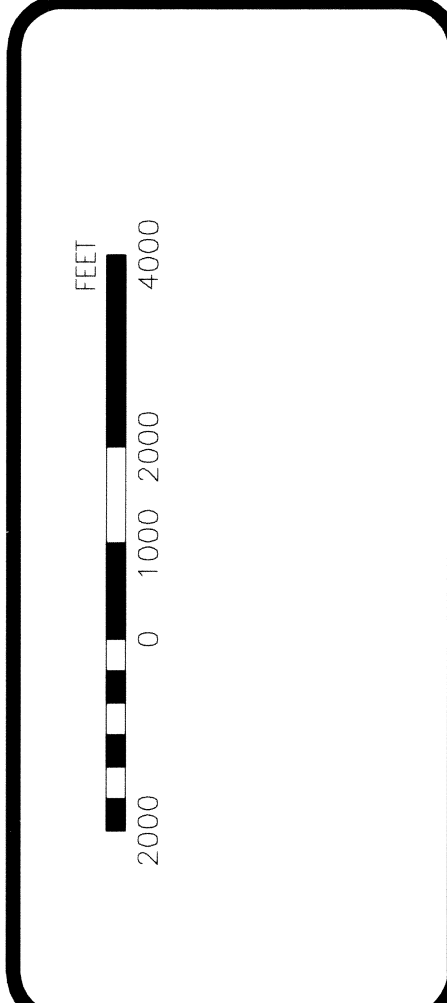
SEC. 17 & 18, T7S, R6E
 KATEEL RIVER MERIDIAN, ALASKA
 USGS NULATO (D-4)
 THRESHOLD 6 & 24 ELEV. 143.96'

DESIGN_LHH
 DRAWN_EJM
 CHECKED_OML

BY	DATE	REVISIONS
EJM	6/21/07	AS-BUILT
	7/9/01	FAA APPROVED

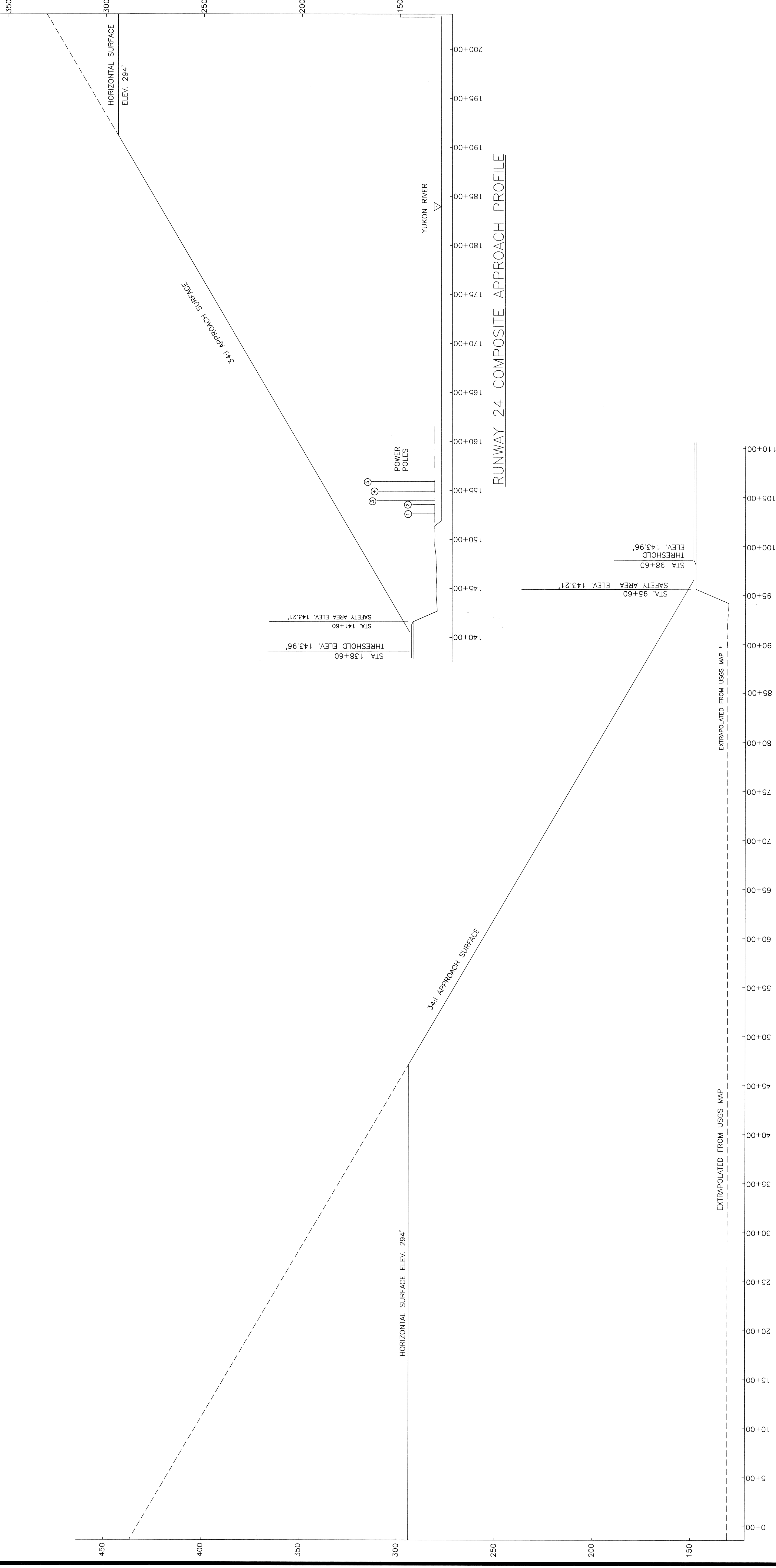
STATE OF ALASKA
 DEPARTMENT OF TRANSPORTATION AND PUBLIC FACILITIES
 NORTHERN REGION-DESIGN AND CONSTRUCTION-AVIATION
 APPROVED
Patricia D. Miller
 PATRICIA D. MILLER, P.E. DESIGN GROUP CHIEF
 DATE 8/23/07

AIRPORT LAYOUT PLAN APPROVED
 BY LETTER OF TOLERANCE 8/24/07
[Signature]
 AIRPORT DIVISION
 ALASKAN REGION, AAL-801
 AIRSPACE REVIEW #01AAL-025NRA



KOTYUKUK AIRPORT
 AIRSPACE

U:\AIR\TALP\KOYUKUK\KOYUKUK1 (01part5)



RUNWAY 24 COMPOSITE APPROACH PROFILE

RUNWAY 6 COMPOSITE APPROACH PROFILE

DESIGN_LHH	
DRAWN_EJM	
CHECKED_OML	

BY	DATE	REVISIONS
EJM	6/21/07	AS-BUILT
	7/9/01	FAA APPROVED

STATE OF ALASKA
 DEPARTMENT OF TRANSPORTATION AND PUBLIC FACILITIES
 NORTHERN REGION-DESIGN AND CONSTRUCTION-AVIATION

APPROVED
Patricia D. Miller
 PATRICIA D. MILLER, P.E. DESIGN GROUP CHIEF

DATE: 8/23/07

AIRPORT LAYOUT PLAN APPROVED
 BY LETTER NO. 8/24/07

AIRPORTS DIVISION,
 ALASKAN REGION, AAL-601
 AIRSPACE REVIEW #01AAL-025NRA

KOYUKUK AIRPORT
 COMPOSITE APPROACH PROFILES