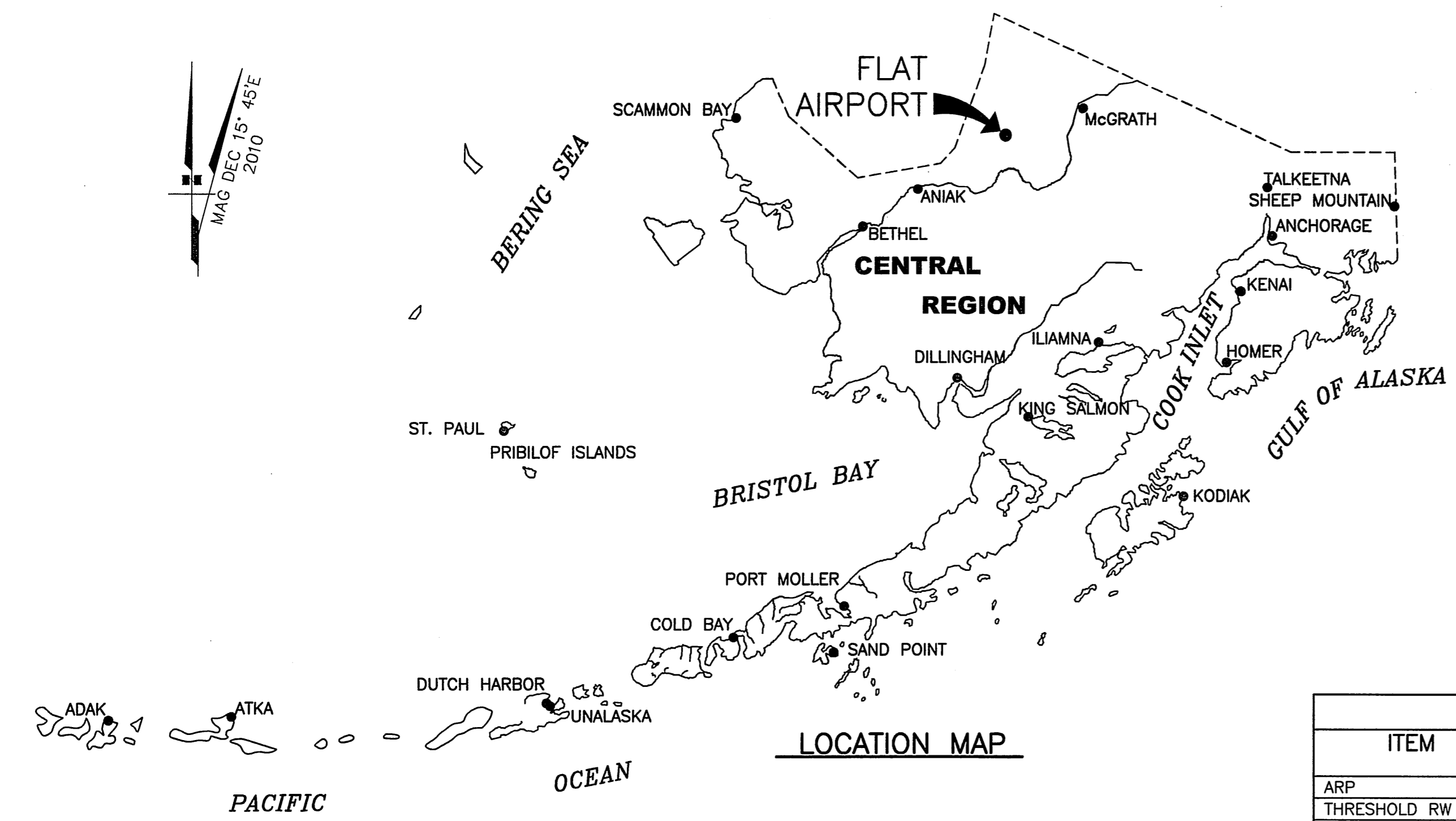


FILE No.: 232-101-1
 Date Plotted: 6/15/2011, 9:02 AM
 Layout Name: DATA (1)
 File Name: P:\Projects\0594227\GC\Flat\ALP\FAT_ALP.dwg
 Designed By: mllewellyn
 Drawn By: mbauer
 Checked By: bhanson

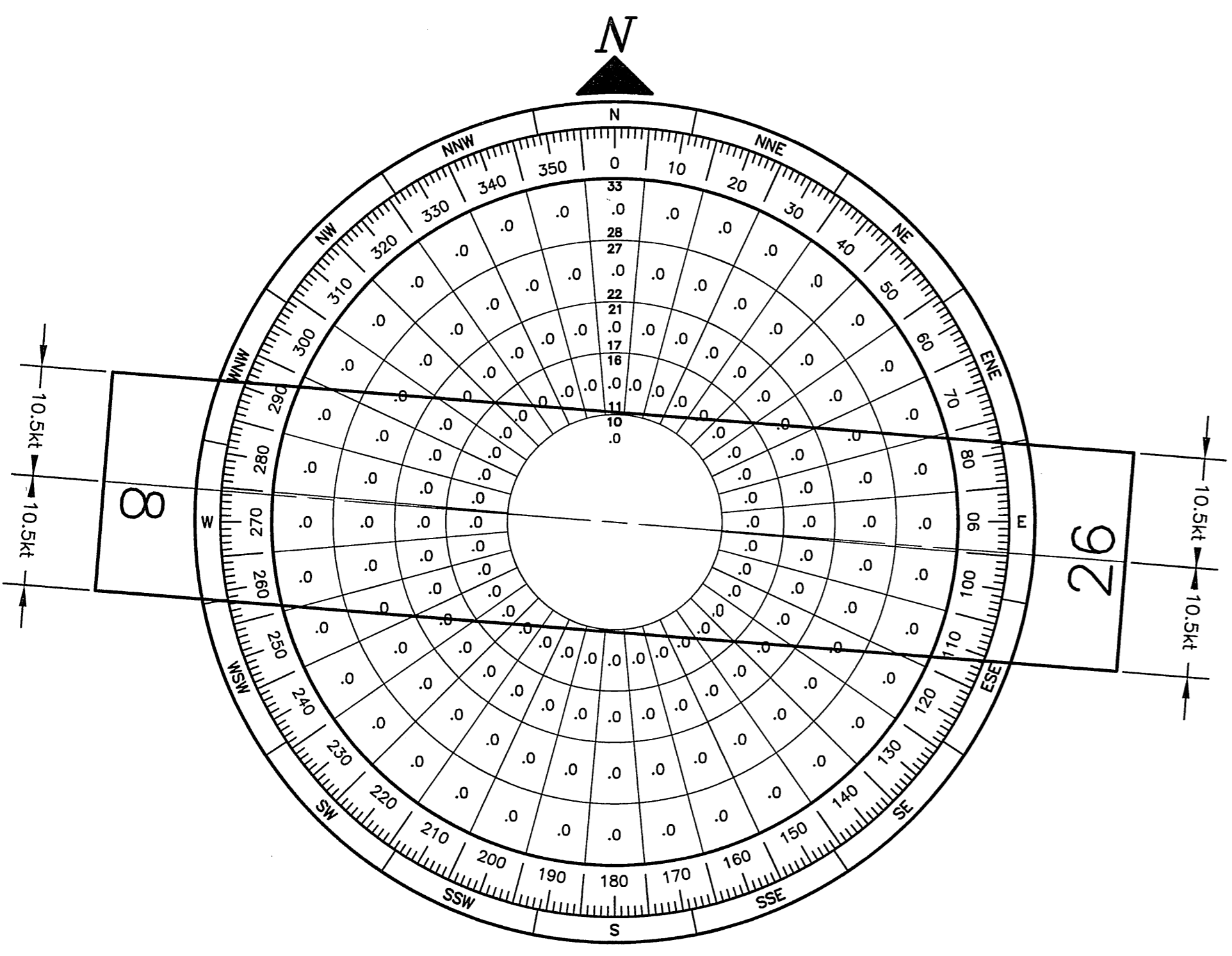


| LEGEND | | |
|---------------------------------|----------|----------|
| ITEM | EXISTING | ULTIMATE |
| AIRPORT REFERENCE POINT (ARP) | | |
| ANTENNA | | |
| BLUFF | | |
| BUILDINGS | | |
| BUILDING RESTRICTION LINE (BRL) | | |
| FENCE | | |
| PAPI | | |
| PROPERTY LINE | | |
| REIL | | |
| ROADWAYS | | |
| ROTATING BEACON | | |
| SHORELINE | | |
| SURVEY MONUMENT | | |
| THRESHOLD MARKERS/LIGHTS | | |
| TOPOGRAPHIC CONTOURS | | |
| TREE (LARGE SINGLE) | | |
| TREELINE | | |
| VASI | | |
| WIND CONE | | |
| WIND CONE AND SEGMENTED CIRCLE | | |

| AIRPORT DATA | | |
|--|----------------|-----------------|
| ITEM | EXISTING | ULTIMATE |
| ICAO IDENTIFIER | NONE | |
| NATIONAL AIRPORT IDENTIFIER | FLT | |
| FAA SITE NUMBER | 50230.*A | |
| AIRPORT ELEVATION NAVD88 | 343.0' | |
| AIRPORT REFERENCE CODE | A-1 | |
| MEAN MAX. TEMPERATURE, HOTTEST MONTH | 70°F, JULY | |
| AIRPORT AND TERMINAL NAVIGATION AIDS | NONE | |
| TAXIWAY LIGHTING/MARKING | NONE | |
| OBSTRUCTION SURVEY SOURCE & TYPE | NONE | |
| MAGNETIC DECLINATION, YEAR, RATE OF CHANGE | 15°45'E / 2010 | 0°16'(W) / YEAR |

| GEOGRAPHIC COORDINATES TABLE | | | | |
|------------------------------|-------------------|--------------------|-------------------|--------------------|
| ITEM | EXISTING LATITUDE | EXISTING LONGITUDE | ULTIMATE LATITUDE | ULTIMATE LONGITUDE |
| ARP | 62°27'10"N | 157°59'12"W | | |
| THRESHOLD RW 8 | 62°27'11.59"N | 157°59'55.15"W | | |
| THRESHOLD RW 26 | 62°27'08.43"N | 157°58'29.43"W | | |

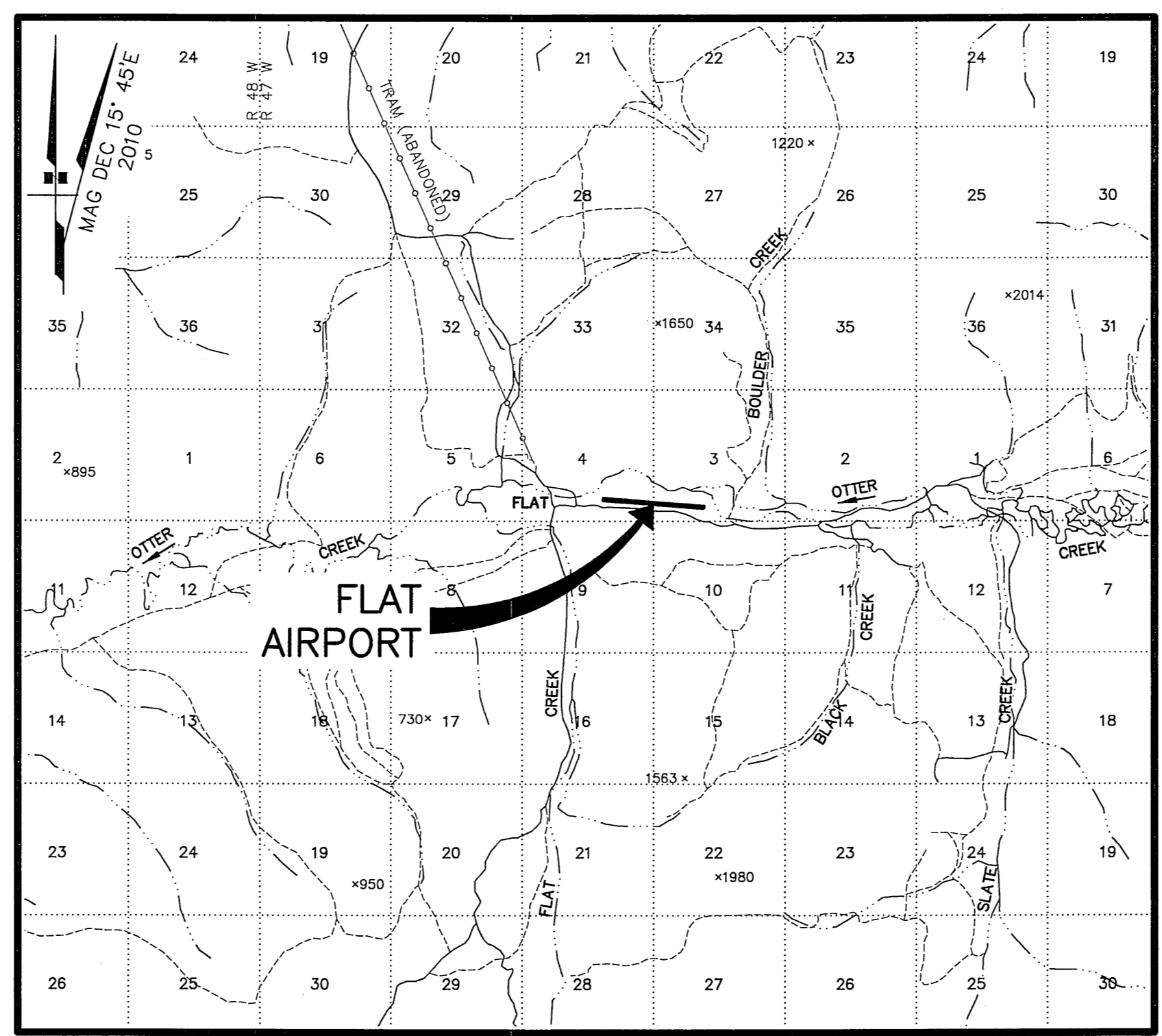
| RUNWAY 8/26 DATA | | | |
|--|-------------------------------|-----------|----------|
| ITEM | EXISTING | NEAR-TERM | ULTIMATE |
| RUNWAY TYPE | UTILITY OR OTHER THAN UTILITY | | |
| FAR PART 77 APPROACH CATEGORY (V, NPI, P) | V/V | | |
| APPROACH SURFACES | 20:1 / 20:1 | | |
| VISIBILITY MINIMUM | 1SM | | |
| RUNWAY SURFACE | GRAVEL | | |
| PAVEMENT STRENGTH SW,DW,DTW,DDTW x1000lbs | N/A | | |
| AIRCRAFT APPROACH CATEGORY | A | | |
| AIRPLANE DESIGN GROUP | I | | |
| MEAN GEODETIC BEARING | N85°27'17.82"W | | |
| EFFECTIVE GRADE | 0.49% | | |
| TOUCHDOWN ELEVATION NAVD88 (ESTIMATED) | 338.0' / 343.0' | | |
| RUNWAY DIMENSIONS | 90' x 4045' | | |
| RUNWAY SAFETY AREA (RSA) DIMENSIONS | 120' x 4525' | | |
| LENGTH BEYOND R/W END | 240' / 240' | | |
| RUNWAY PROTECTION ZONE (RPZ) DIMENSIONS | 250' x 450' x 1000' | | |
| RUNWAY OBJECT FREE AREA (OFA) DIMENSIONS | 250' x 4525' | | |
| LENGTH BEYOND R/W END OR STOPWAY | 240' / 240' | | |
| RUNWAY OBSTACLE FREE ZONE (OFZ) DIMENSIONS | 250' x 4445' | | |
| RUNWAY LIGHTING | NONE | | |
| RUNWAY MARKING TYPE | NONE | | |
| RUNWAY VISUAL APPROACH AIDS | NONE | | |



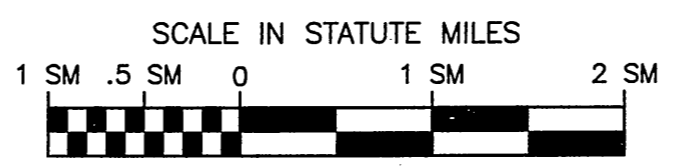
NOTE: WIND DATA NOT AVAILABLE.

| WIND DATA TABLE | | | | |
|-----------------|---------|-------|-------|-------|
| RUNWAY | 10.5 kt | 13 kt | 16 kt | 20 kt |
| 8/26 | | | | |
| | | | | |

SOURCE: NONE
PERIOD: NONE



VICINITY MAP
 SEC. 03, 04, T 27 N, R 47 W,
 SEWARD MERIDIAN
 U.S.G.S. IDITAROD (D-4), ALASKA



- NOTES:**
- THE INFORMATION SHOWN HEREIN IS BASED ON A FIELD SURVEY PERFORMED BY DOWL HKM ON JUNE 23, 2010.
 - THE HORIZONTAL DATUM IS NAD83(CORS98) (EPOCH:2003.0000) AS DETERMINED BY STATIC GPS OBSERVATIONS USING LEICA DUAL FREQUENCY GPS RECEIVERS AND PROCESSED USING THE NGS OPUS UTILITY.
 - ELEVATIONS ARE NAV88 ORTHOMETRIC HEIGHTS AS DETERMINED BY GPS OBSERVATIONS AND A HIGH RESOLUTION MODEL, GEOID-99.
 - THRESHOLD COORDINATES WERE DETERMINED USING A STATIC GPS NETWORK. THE TOPOGRAPHIC MAPPING IN THE AIRPORT VICINITY WAS DIGITIZED FROM U.S.G.S. IDITAROD (D-4), ALASKA.

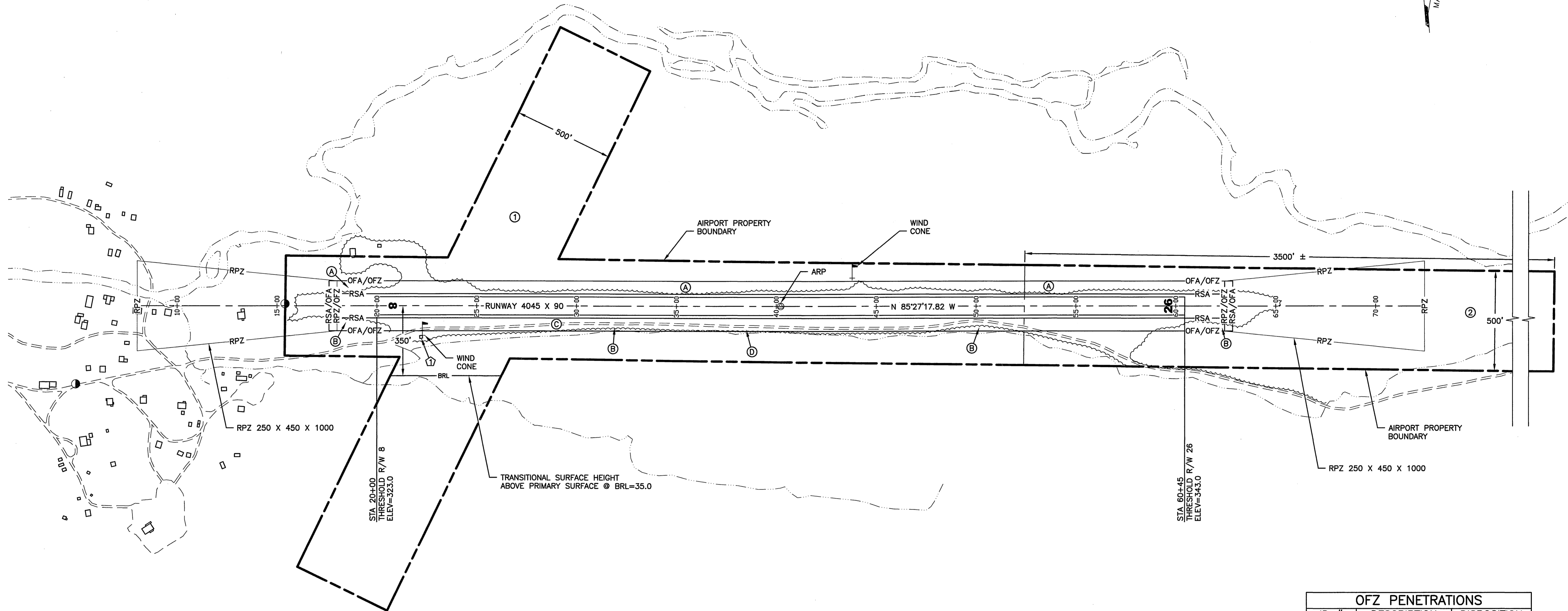
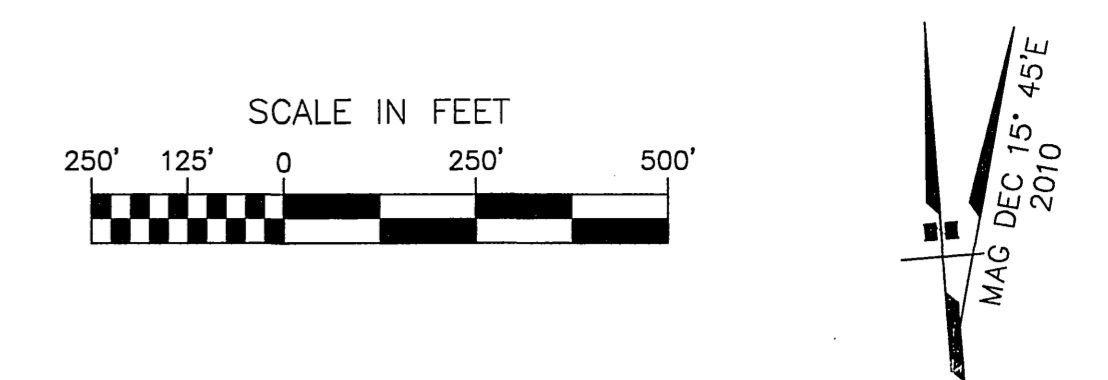
| DRAWING INDEX | | STATE OF ALASKA DEPARTMENT OF TRANSPORTATION AND PUBLIC FACILITIES CENTRAL REGION | |
|---------------|------------------|--|------|
| SHT # | TITLE | DATE | DATE |
| 1 | DATA | 6/15/2011 | |
| 2 | EXISTING LAYOUT | | |
| 3 | AIRPORT AIRSPACE | | |

| | | |
|--|--------------------------|-----------------|
| BY: _____ | DATE: _____ | REVISION: _____ |
| APPROVED: <i>K. Kim Rice</i> | DATE: 7/5/2011 | |
| K. KIM RICE, P.E. | PRECONSTRUCTION ENGINEER | |
| RECOMMENDED: <i>Harvey M. Douthett</i> | DATE: 7/5/2011 | |
| HARVEY M. DOUTHETT, P.E. | DESIGN SECTION CHIEF | |

| | |
|---|---|
| AIRPORT LAYOUT PLAN CONDITIONAL APPROVAL SUBJECT TO ALP APPROVAL LETTER DATED 7/22/11 FAA AIRSPACE REVIEW NUMBER: 2011-AAL-2-NRA | DATE: 7/22/11 FAA, AIRPORTS DIVISION ALASKAN REGION, AAL-621 |
|---|---|

| | |
|---|----------------------------------|
| FLAT AIRPORT FLAT, ALASKA AIRPORT LAYOUT PLAN DATA | DATE: 6/15/2011 SHEET: 1 OF 3 |
|---|----------------------------------|

Date Plotted: 6/15/2011, 9:02 AM
 Layout Name: ELAY(2)
 File Name: P:\Projects\0594227\001\01\ALP\ALP_FLAT.dwg
 Designed By: nilewilyn
 Drawn By: boatum
 Checked By: bhanson



● MONUMENT LOCATED DURING JUNE 23, 2010 SITE VISIT

| OFZ PENETRATIONS | | |
|------------------|---------------------|-------------|
| ID # | DESCRIPTION | DISPOSITION |
| (A) | BRUSH/TREES | REMOVE |
| (B) | BRUSH/TREES | REMOVE |
| (C) | ROAD | REMAIN |
| (D) | WILEY POST MONUMENT | REMAIN |

| BUILDING DATA TABLE | | | | |
|---------------------|--------------|----------------|-------------------|------------------|
| ID # | DESCRIPTION | STATION/OFFSET | TOP ELEV (NAVD88) | OBSTRUCT MARKING |
| 1 | STORAGE SHED | 22+13/149' R | 334.0' | NONE |
| | | | | |
| | | | | |

| PROPERTY STATUS | | | | | | | |
|-----------------|---------------------------|---------|-------------------------|-------------|---------------|------------------|------------------|
| ID # | INTEREST | GRANTOR | GRANTEE | PARCEL SIZE | DATE ACQUIRED | RECORDED DOC NO. | ACQUIRED AIP NO. |
| 1 | A.N.S NO. 142 | | STATE OF ALASKA, DOT/PF | 70.56± ac | 06-26-40 | | |
| 2 | Q.C.D.-SEC 45 OMNIBUS ACT | | STATE OF ALASKA, DOT/PF | 40.17± ac | 06-30-59 | | |

NOTE: PROPERTY BOUNDARY AND TRACT LINES ARE BASED ON 1969 PROPERTY PLAN.

NOTE:
1. CONTOUR DATA NOT AVAILABLE.

| BY | DATE | REVISION |
|----|------|----------|
| | | |
| | | |
| | | |

STATE OF ALASKA
DEPARTMENT OF TRANSPORTATION
AND PUBLIC FACILITIES
CENTRAL REGION

FLAT AIRPORT
 FLAT, ALASKA
 AIRPORT LAYOUT PLAN
 EXISTING LAYOUT

DATE:
6/15/2011
 SHEET:
2 OF 3

Date Plotted: 15/15/2011 9:02 AM
 Layout Name: P77 (3)
 File Name: F:\Projects\059422\CGC\Flat\ALP\FLAT_ALP.dwg
 Designed By: Alvarado
 Drawn By: Boudin
 Checked By: Boudin

RUNWAY 8/26

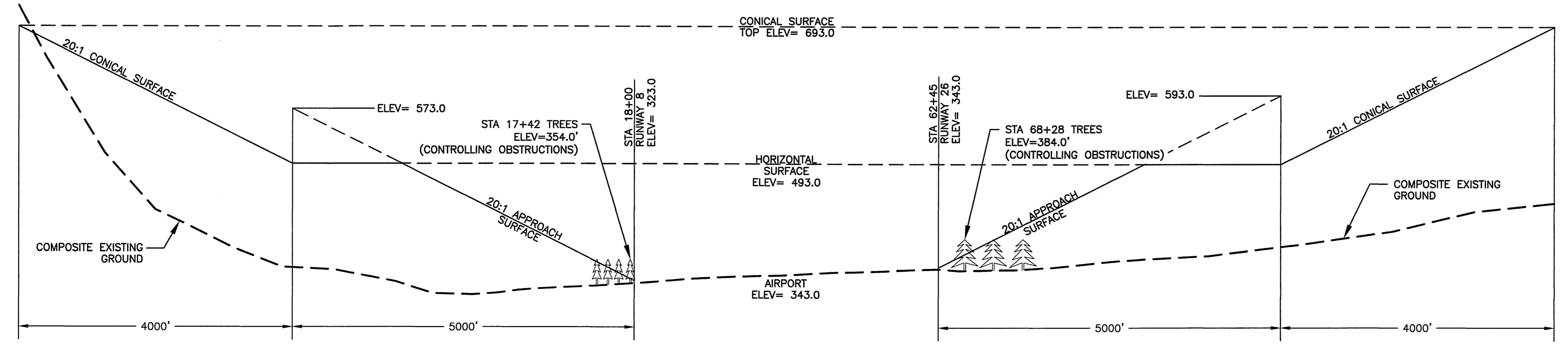
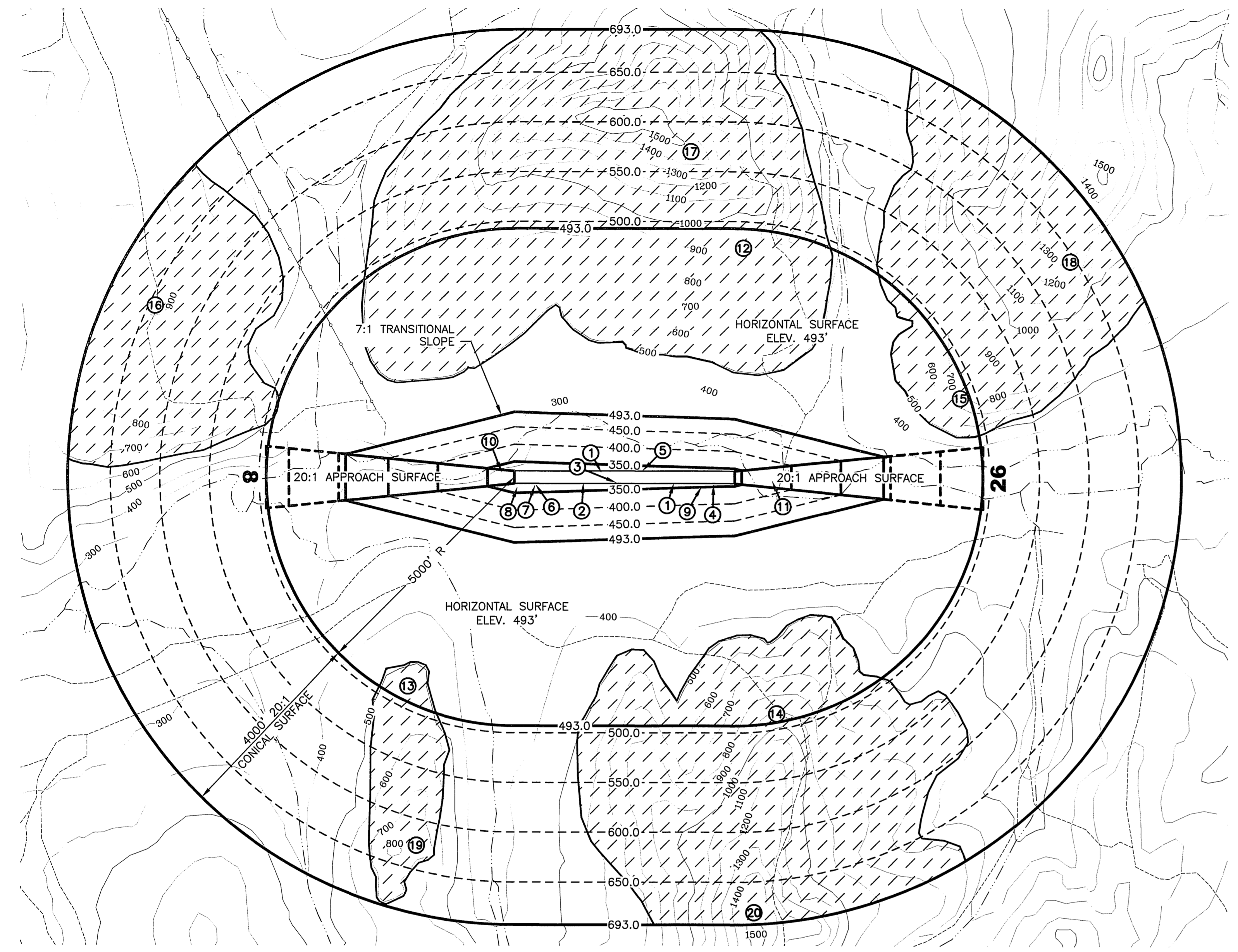
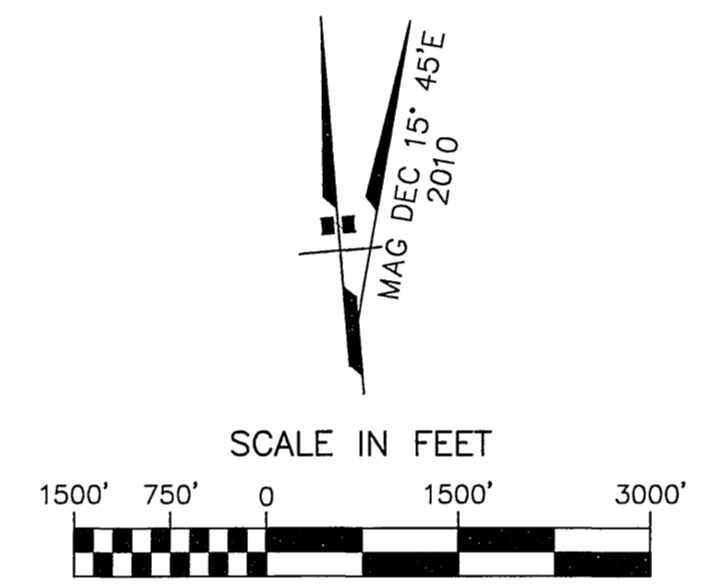
PART 77 SURFACE OBSTRUCTIONS (OUTER PORTION)

| ID # | DESCRIPTION | STATION/OFFSET | ELEVATION | SURFACE PENETRATED | SURFACE ELEVATION | AMOUNT PENETRATION | DISPOSITION | STAGE TO CORRECT |
|-------|----------------------|-----------------------------|------------|--------------------|-------------------|--------------------|-------------|------------------|
| 1 | BRUSH AND TREES | */60 TO 125 R/L | 328 TO 383 | PRIMARY | 323 TO 343 | 5 TO 40 | REMOVE | NEAR-TERM |
| 2 | ROAD | 21+63 TO 53+40/67 R | 338 TO 355 | PRIMARY | 323 TO 340 | 15 | REMAIN | |
| 3 | WILEY POST MONUMENT | 38+50/116 R | 347 | PRIMARY | 332 | 15 | REMAIN | |
| 4 | 3 FUEL STORAGE TANKS | 58+06/140 R | 350 | TRANSITIONAL | 345 | 5 | REMOVE | NEAR-TERM |
| 5 | WIND CONE | 43+80/130 L | 361 | TRANSITIONAL | 337 | 24 | REMAIN | |
| 6 | WIND CONE | 22+28/146 R | 358 | TRANSITIONAL | 328 | 30 | REMAIN | |
| 7 | STORAGE SHED | 22+14/146 R | 336 | TRANSITIONAL | 328 | 8 | REMAIN | |
| 8 | ROAD | 18+00 TO 21+80/125 TO 230 R | 338 | TRANSITIONAL | 323-338 | 0-15 | REMAIN | |
| 9 | ROAD | 53+41 TO 57+00/125 TO 230 R | 355 | TRANSITIONAL | 340-355 | 0-15 | REMAIN | |
| 10** | TREE | 17+42/100 L | 354 | APPROACH R/W 8 | 326 | 28 | REMOVE | NEAR-TERM |
| 11** | TREE | 68+28/70 R | 384 | APPROACH R/W 26 | 372 | 12 | REMOVE | NEAR-TERM |
| 12*** | TERRAIN | 64+13/4600 L | 900 | HORIZONTAL | 493 | 407 | REMAIN | |
| 13*** | TERRAIN | -3+37/4200 R | 500 | HORIZONTAL | 493 | 7 | REMAIN | |
| 14*** | TERRAIN | 71+00/4750 R | 900 | HORIZONTAL | 493 | 407 | REMAIN | |
| 15*** | TERRAIN | 107+85/1600 L | 800 | HORIZONTAL | 493 | 307 | REMAIN | |
| 16*** | TERRAIN | -54+40/3450 L | 900 | CONICAL | 630 | 270 | REMAIN | |
| 17*** | TERRAIN | 53+50/6550 L | 925 | CONICAL | 575 | 350 | REMAIN | |
| 18*** | TERRAIN | 130+00/4350 L | 1300 | CONICAL | 640 | 660 | REMAIN | |
| 19*** | TERRAIN | 1+60/7400 R | 800 | CONICAL | 630 | 170 | REMAIN | |
| 20*** | TERRAIN | 66+50/8750 R | 1490 | CONICAL | 693 | 797 | REMAIN | |

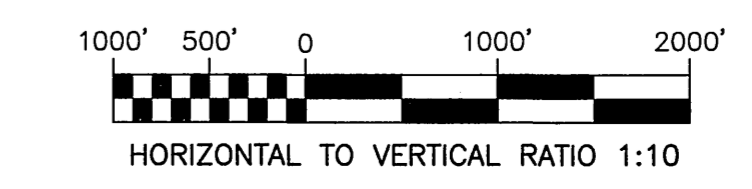
* BOTH SIDES, ALMOST ENTIRE LENGTH OF PRIMARY SURFACE.
 ** HIGHEST MEASURED FEATURE IN A VEGETATED AREA.
 *** HIGHEST FEATURE IN A LARGE AREA OF TERRAIN PENETRATION. REFER TO HATCHED AREAS ON MAP.

NOTES

- AIRPORT ELEVATION IS 343.0'.
- PRIMARY SURFACE WIDTH IS 250'.
- TOPO CONTOURS ARE SHOWN IN FEET. BASEMAP DATA FROM USGS IDITAROD (D-4).
- A RANGEFINDER WITH BUILT-IN INCLINOMETER WAS USED TO IDENTIFY OBSTRUCTIONS CLOSE TO THE RUNWAY IN THE PRIMARY AND TRANSITIONAL SURFACES.
- APPROACH SURFACES ARE 20:1, BEGINNING 200' BEYOND THE THRESHOLDS.
- THE RUNWAY 8 CONTROLLING OBSTRUCTION IS A GROUP OF TREES AT STA 17+42 100L, ELEVATION IS 31' ABOVE RUNWAY. THE OBSTRUCTION CLEARANCE SLOPE IS ESTABLISHED AS 8:1, PER FAA AC 150-5200-35, SECTION 4, DATA ELEMENT 57.
- THE RUNWAY 8 APPROACH END SITING SURFACES DO NOT MEET ANY THRESHOLD SITING CRITERIA BECAUSE OF VEGETATION (BRUSH & TREES) PENETRATIONS AS DEFINED IN FAA AC 150/5300-13, CHG 15, APPENDIX 2, TABLE A2-1.
- THE RUNWAY 26 CONTROLLING OBSTRUCTION IS A TREE AT STA 68+28 70R, ELEVATION IS 41' ABOVE RUNWAY. THE OBSTRUCTION CLEARANCE SLOPE IS ESTABLISHED AS 19:1, PER FAA AC 150-5200-35, SECTION 4, DATA ELEMENT 57.
- THE RUNWAY 26 APPROACH END SITING SURFACES DO NOT MEET ANY THRESHOLD SITING CRITERIA BECAUSE OF VEGETATION (BRUSH & TREES) PENETRATIONS. AS DEFINED IN FAA AC 150/5300-13, CHG 15, APPENDIX 2, TABLE A2-1.
- THERE ARE NO KNOWN ORDINANCES SPECIFYING HEIGHT RESTRICTIONS IN FLAT. FLAT IS AN UNINCORPORATED COMMUNITY IN AN UNORGANIZED BOROUGH.
- THERE IS NO LANDFILL, SEWAGE DISPOSAL SITE, OR WASTEWATER LAGOON IN FLAT.



RUNWAY PROFILE



| | | |
|--|------|---|
| BY | DATE | REVISION |
| | | |
| STATE OF ALASKA DEPARTMENT OF TRANSPORTATION AND PUBLIC FACILITIES CENTRAL REGION | | |
| FLAT AIRPORT FLAT, ALASKA AIRPORT LAYOUT PLAN | | DATE: 6/15/2011 SHEET: 3 OF 3 |
| AIRPORT AIRSPACE 14 CFR, PART 77 | | |