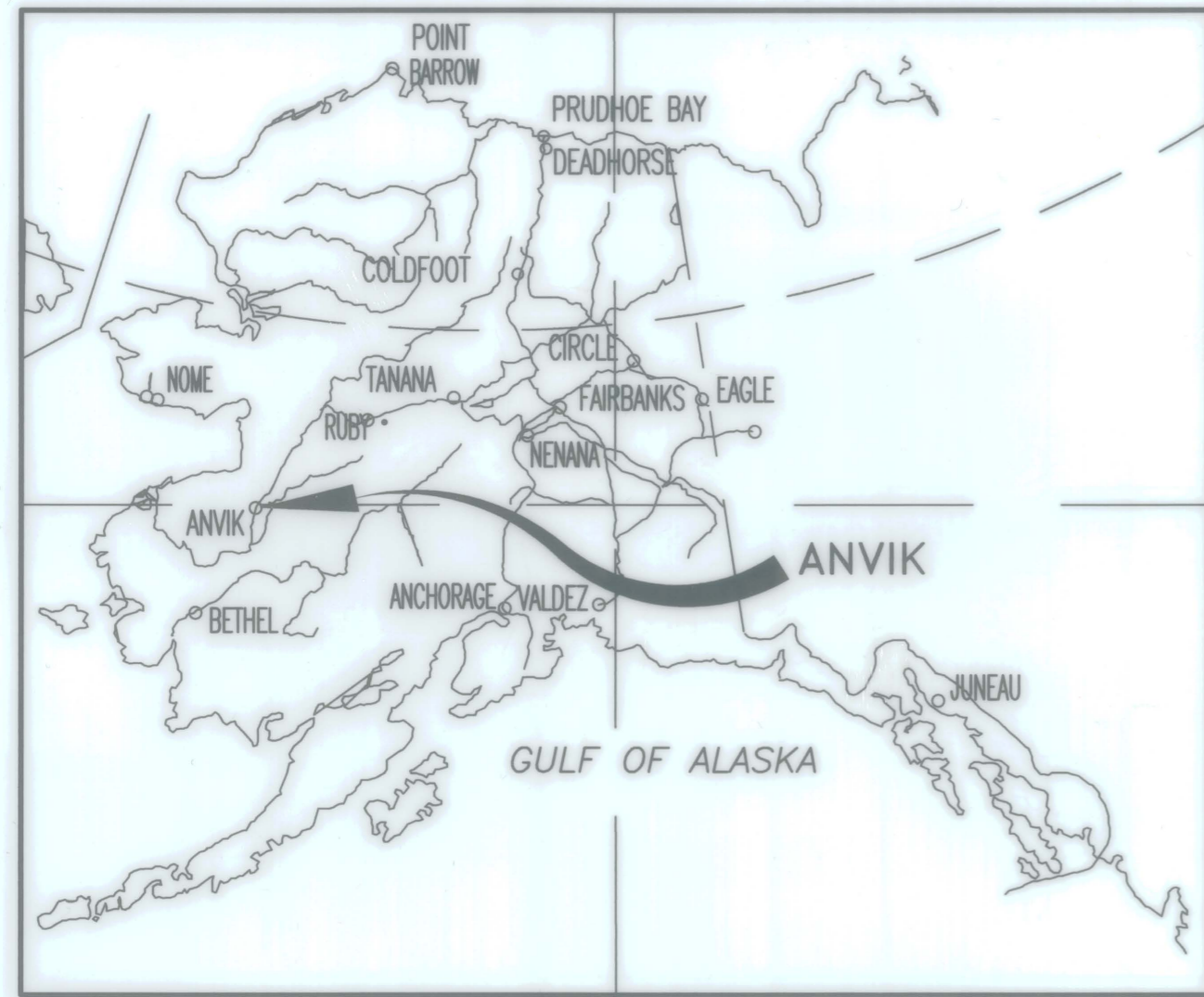


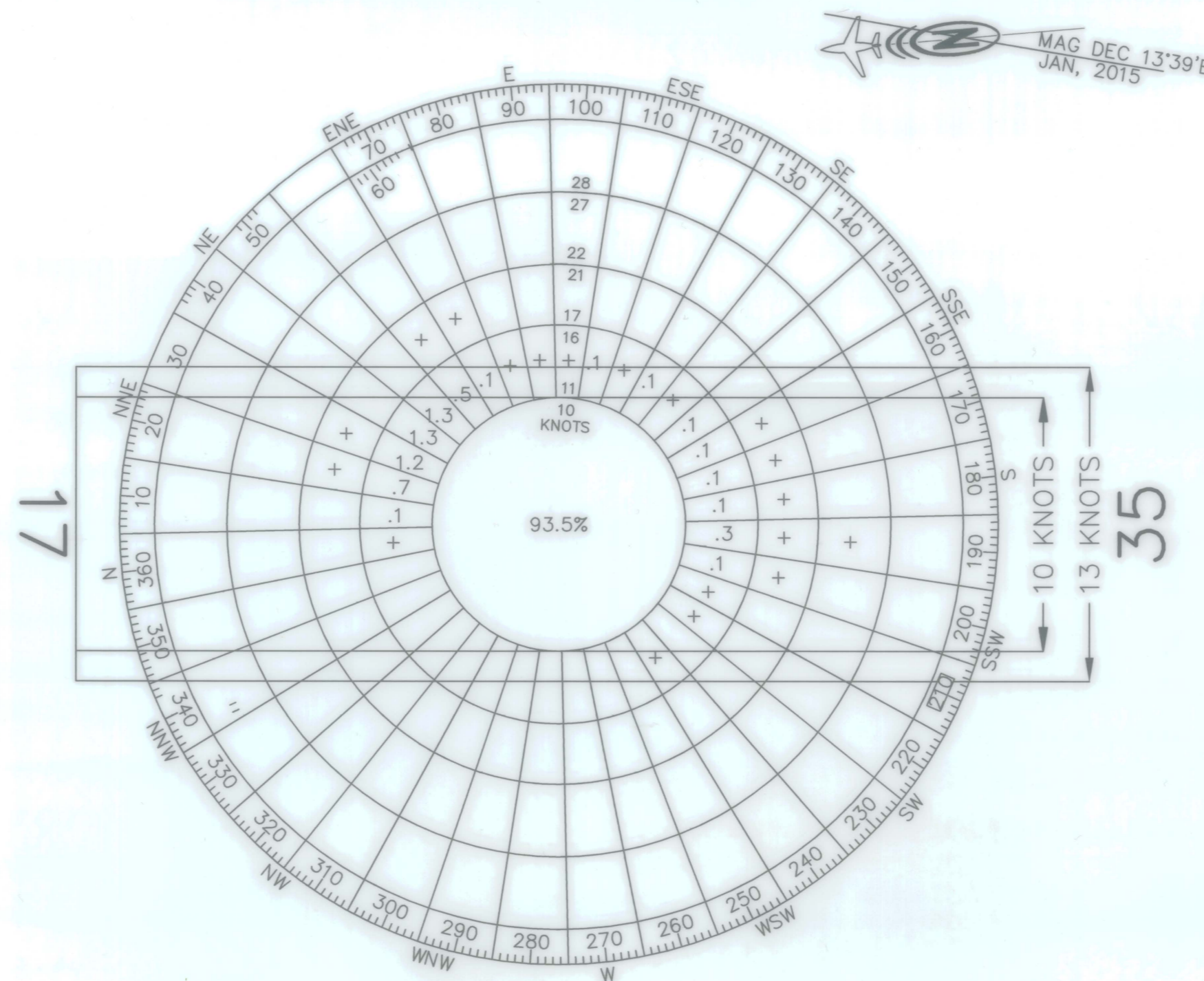
Z:\project\1605.04 DOT\_N Aeronautical\2009 Anvik Airport\Civil\ACAD\1605.04-1-Data\_MM.dwg  
Plotted 10/15/2013 10:22 AM by Matt Majoros



**LOCATION MAP**  
NO SCALE



**VICINITY MAP**  
USGS QUAD MAP HOLY CROSS (C-3), 1952  
T 30 N, R 59 W, SEC 29 & 32  
SEWARD MERIDIAN, KUSKOKWIM RECORDING DISTRICT  
1" = 1 MILE



**WIND ROSE**

WIND DATA		
RUNWAY	10 KNOTS	13 KNOTS
17-35	99.00%	99.76%
SOURCE: NOAA WESTERN REGION CLIMATE CENTER PERIOD: APRIL 2000 - MARCH 2001		

AIRPORT DATA		
ITEM	EXISTING	ULTIMATE
ICAO IDENTIFIER	PANV	
NATIONAL AIRPORT IDENTIFIER	ANV	
FAA SITE NUMBER	50039.11*C	
AIRPORT ELEVATION, NAVD88	297.3'	SAME
AIRPORT REFERENCE CODE	B - II	SAME
MEAN MAX. TEMPERATURE, HOTTEST MONTH *	67F IN JULY	
AIRPORT AND TERMINAL NAVIGATION AIDS	ROTATING BEACON, NDB, DME, AWOS, GPS	
TAXIWAY LIGHTING/MARKING	MITL	SAME
RAMP LIGHTING	NONE	
OBSTRUCTION SURVEY SOURCE & TYPE	R&M CONSULTANTS, INC. 2011/ VERTICALLY GUIDED AIRPORT AIRSPACE ANALYSIS SURVEY	
MAGNETIC DECLINATION, YEAR, RATE OF CHANGE **	13°39'E, JANUARY 2015 15.9°W/YEAR	
DATA FROM (*) THE WESTERN REGIONAL CLIMATE CENTER (**) NATIONAL GEOPHYSICAL DATA CENTER, HORIZONTAL GROUND DISTANCES IN US SURVEY FEET, BASIS OF ELEVATION IS THE NAVD88 ELEVATION INCORPORATED GEOID09.		

AIRPORT SURVEY CONTROL			
MONUMENT	LATITUDE	LONGITUDE	ELEVATION
ANV A (PACS)	62°39'13.05"N	160°11'14.99"W	286.2'
ANV B (SACS)	62°38'46.66"N	160°11'21.40"W	292.2'
ANV C (SACS)	62°38'30.69"N	160°11'19.26"W	318.8'

RUNWAY DATA		
ITEM	EXISTING	ULTIMATE
<b>RW 17-35</b>		
F.A.R. PART 77 APPROACH CATEGORY	NPI	SAME
F.A.R. PART 77 APPROACH SURFACE	34:1	SAME
APPROACH SURFACES/OCS*	20:1	SAME
VISIBILITY MINIMUM	≥ 1 MILE	SAME
RUNWAY SURFACE	GRAVEL	SAME
PAVEMENT STRENGTH	N/A	SAME
RUNWAY DESIGN CODE (RDC)	B-II-4000	SAME
RUNWAY REFERENCE CODE (RRC)	B/II/4000	SAME
RUNWAY DIMENSIONS	4000' X 75'	SAME
RUNWAY BEARING (TRUE)	S06°22'28"E	SAME
EFFECTIVE GRADE	0.17%	SAME
RUNWAY SAFETY AREA (RSA) DIMENSIONS	4600' X 150'	SAME
LENGTH BEYOND R/W ENDS	300'	SAME
RUNWAY PROTECTION ZONE (RPZ) DIMENSIONS	1000' X 500' X 700'	SAME
RUNWAY OBJECT FREE AREA (ROFA) DIMENSIONS	4600' X 500'	SAME
LENGTH BEYOND R/W ENDS OR STOPWAYS	300'	SAME
RUNWAY OBSTACLE FREE ZONE (OFZ) DIMENSIONS	4400' X 400'	SAME
RUNWAY LIGHTING TYPE	MIRL	SAME
RUNWAY MARKING TYPE	NONE	SAME
RUNWAY VISUAL APPROACH AIDS	PAPI, REIL	SAME
TOUCHDOWN ZONE ELEVATION NAVD88	293.9' / 297.3'	SAME
*FROM FAA AC 150/5300-13A		

GEOGRAPHIC COORDINATES						
ITEM	EXISTING LATITUDE*	EXISTING LONGITUDE*	EXISTING ELEVATION	ULTIMATE LATITUDE	ULTIMATE LONGITUDE	ULTIMATE ELEVATION
AIRPORT REFERENCE POINT	N62° 38' 50.38"	W160° 11' 24.23"	-	SAME	SAME	-
THRESHOLD 17	N62° 39' 09.95"	W160° 11' 19.48"	290.4'	SAME	SAME	SAME
THRESHOLD 35	N62° 38' 30.81"	W160° 11' 28.98"	297.3'	SAME	SAME	SAME
*NAD83						

LEGEND		
ITEM	EXISTING	ULTIMATE
AIRPORT REFERENCE POINT		
ANTENNA/TOWER		
BUILDING		
BUILDING RESTRICTION LINE		
PROPERTY LINE		
REIL		
ROADWAYS		
ROTATING BEACON		
SURVEY MONUMENT		
THRESHOLD LIGHTS		
TOPOGRAPHIC CONTOURS		
TREELINE		
WINDCONE		
WINDCONE WITH SEGMENTED CIRCLE		
RUNWAY/TAXIWAY CENTERLINE		
OFZ OBSTRUCTION (TREE, LARGE SINGLE)		
SHORELINE		
OVERHEAD POWERLINE		
AVIGATION AND HAZARD EASEMENT		
PAPI		

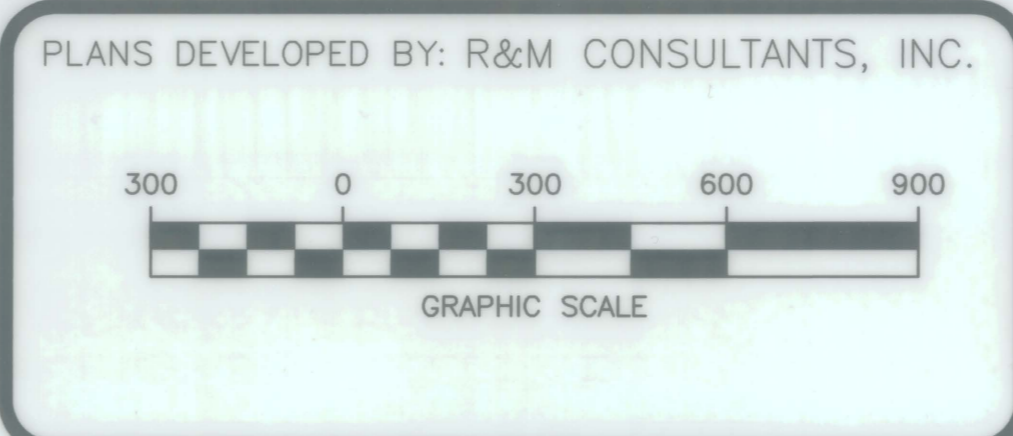
SHEET INDEX	
TITLE	NO.
AIRPORT DATA SHEET	1
AIRPORT LAYOUT PLAN	2
TERMINAL AREA PLAN	3
INNER PORTION OF THE APPROACH SURFACE	4
AIRPORT AIRSPACE PLAN AND PROFILE	5

DESIGN	BY	DATE	REVISIONS
NBS/PRB	NBS	7/3/2013	UPDATED BASED ON AERONAUTICAL SURVEY
DRAWN	MIM		
CHECKED	EJG		

STATE OF ALASKA  
DEPARTMENT OF TRANSPORTATION AND PUBLIC FACILITIES  
NORTHERN REGION - DESIGN AND CONSTRUCTION - AVIATION

APPROVED  
  
ALBERT M. L. BECK, P.E. DATE 10-23-13  
AIRPORT DESIGN GROUP CHIEF

AIRPORT LAYOUT PLAN APPROVED  
BY LETTER DATED: 10/31/13  
  
AIRPORTS DIVISION,  
ALASKAN REGION, AAL-601  
AIRSPACE REVIEW #2002-AAL-232-NRA

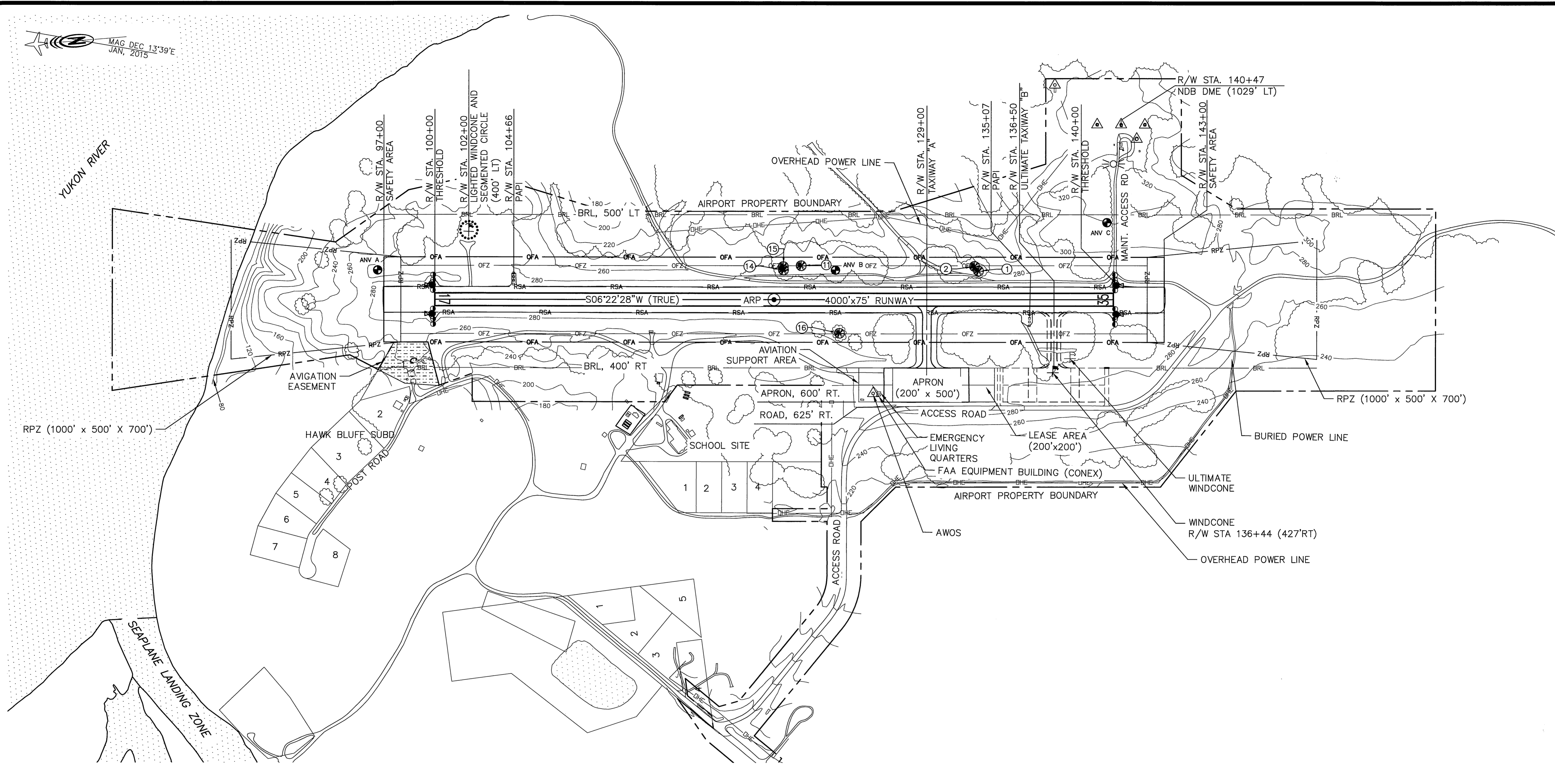


**ANVIK AIRPORT**  
**AIRPORT LAYOUT PLAN**  
**AIRPORT DATA SHEET**

SHEET  
**1**  
OF  
**5**

Z:\project\1605.04 DOT\_N Aeronautical 2009 Anvik Airport\Civil\ACAD\1605.04-2-Layout-airport.dwg  
Plotted 10/15/2013 10:22 AM by Matt Majoros

MAG DEC 13'39"E  
JAN, 2015



**NOTES**  
1. THERE ARE OFZ OBJECT PENETRATIONS, SEE SHEET 5 FOR OBSTRUCTION DATA.

**LEGEND**  
⊕ OFZ OBSTRUCTION

DESIGN_NBS/PRB	BY	DATE	REVISIONS
	NBS	7/3/2013	UPDATED BASED ON AERONAUTICAL SURVEY
DRAWN_MIM			
CHECKED_EJG			

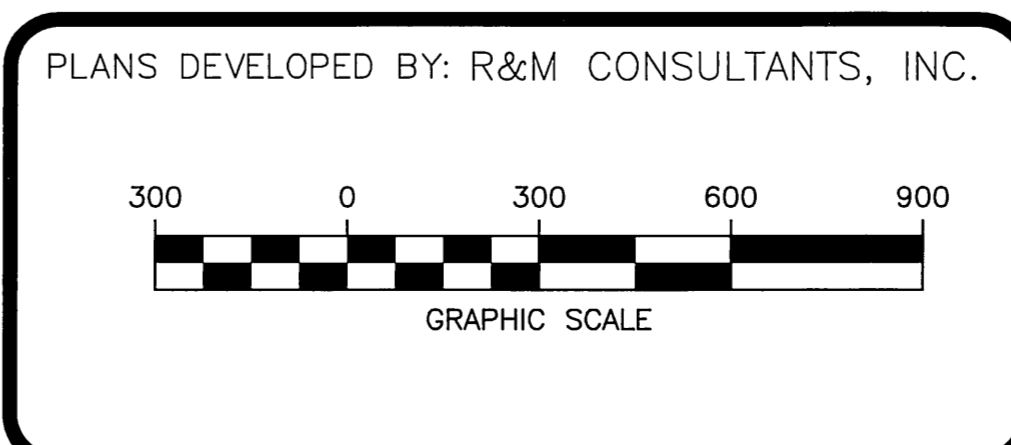
STATE OF ALASKA  
DEPARTMENT OF TRANSPORTATION AND PUBLIC FACILITIES  
NORTHERN REGION - DESIGN AND CONSTRUCTION - AVIATION

APPROVED  
*Albert M. Beck*  
ALBERT M. L. BECK, P.E. AIRPORT DESIGN GROUP CHIEF

DATE 10-23-13

AIRPORT LAYOUT PLAN APPROVED  
BY LETTER DATED: 10/31/13

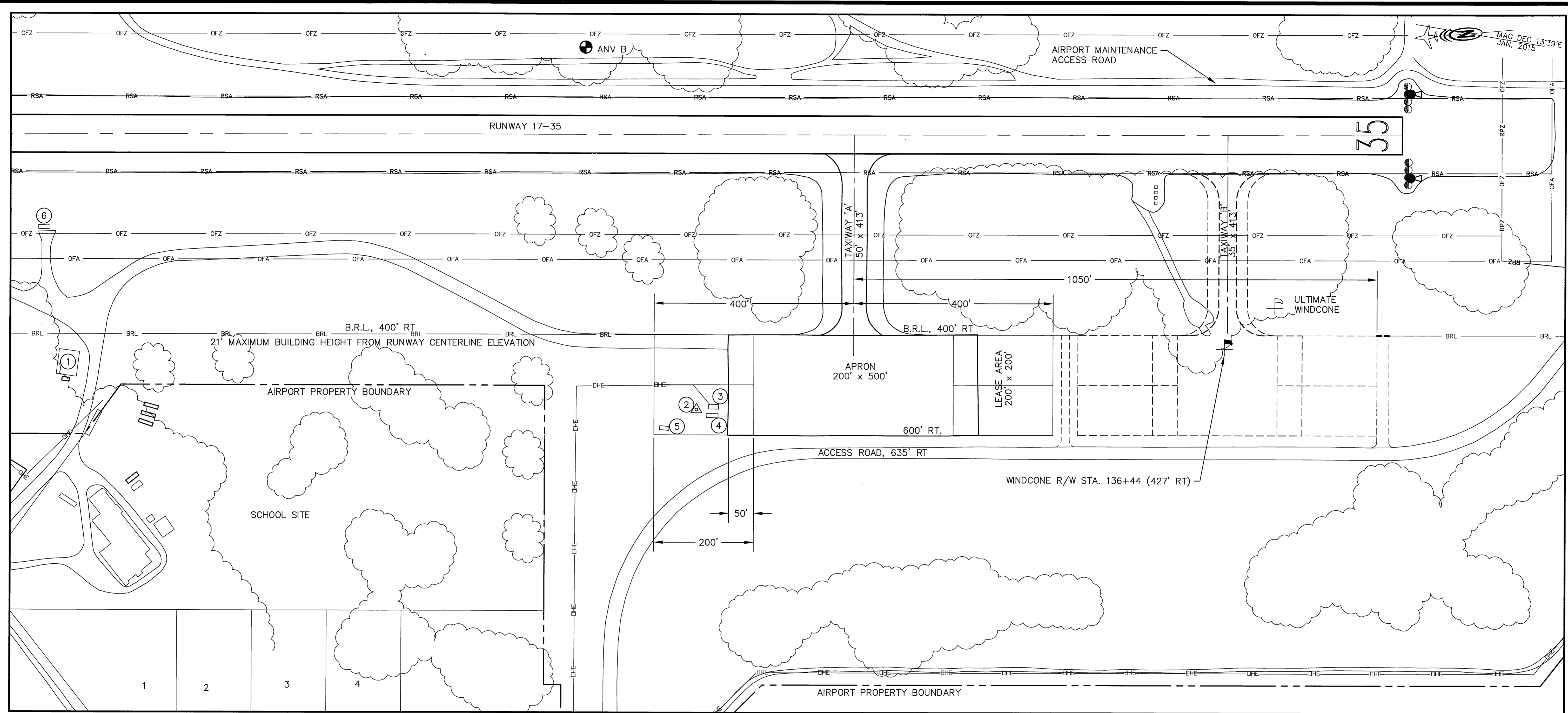
*[Signature]*  
AIRPORTS DIVISION,  
ALASKAN REGION, AAL-601  
AIRSPACE REVIEW #2002-AAL-232-NRA



# ANVIK AIRPORT AIRPORT LAYOUT PLAN

## LAYOUT PLAN

Z:\project\1605.04 DOT\_N Aeronautical 2009 Anvik Airport\Civil\ACAD\1605.04-3-LAYOUT-terminal.dwg  
Plotted 10/15/2013 10:22 AM by Matt Majoros



TAXIWAY DATA						
TAXIWAY	LENGTH (FEET)	WIDTH (FEET)	SAFETY AREA WIDTH (FEET)	OBJECT FREE AREA WIDTH (FEET)	AIRPLANE DESIGN GROUP	INTERSECTION WITH RUNWAY CENTERLINE
EXISTING TAXIWAY "A"	413	50	120	186	III	129+00
ULTIMATE TAXIWAY "B"	413	35	80	132	II	136+50

APRON DATA		
APRON	DIMENSIONS (FEET)	AREA (SQUARE FEET)
EXISTING APRON	200x500	100,000

BUILDING DATA						
BUILDING NUMBER	DESCRIPTION	STATION RW 17-35	OFFSET	TOP ELEV	OBSTRUCTION MARKING	DISPOSITION
1	SREB	113+26	434' RT	275.8'	NONE	NONE
2	AWOS	125+85	550' RT	314.1'	LIGHT	N/A
3	EMERGENCY LIVING QUARTERS	126+19	540' RT	298.7'	NONE	NONE
4	FAA EQUIPMENT BUILDING	126+16	558' RT	298.2'	NONE	NONE
5	BUILDING, UNKNOWN	125+20	583' RT	297.0'	NONE	NONE
6	8'x22' ELECTRICAL EQUIPMENT BUILDING	112+76	182' RT	278.5'	NONE	NONE

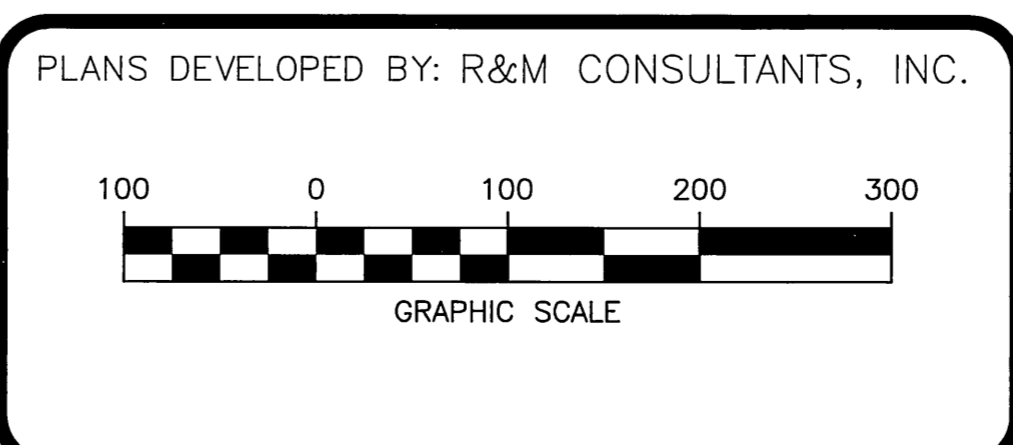
DESIGN_NBS/PRB	BY NBS	DATE 7/3/2013	REVISIONS UPDATED BASED ON AERONAUTICAL SURVEY
DRAWN_MIM			
CHECKED_EJC			

STATE OF ALASKA  
DEPARTMENT OF TRANSPORTATION AND PUBLIC FACILITIES  
NORTHERN REGION - DESIGN AND CONSTRUCTION - AVIATION

APPROVED  
*Albert M. L. Beck*  
ALBERT M. L. BECK, P.E.      DATE 10-23-13  
AIRPORT DESIGN GROUP CHIEF

AIRPORT LAYOUT PLAN APPROVED  
BY LETTER DATED: 10/31/13

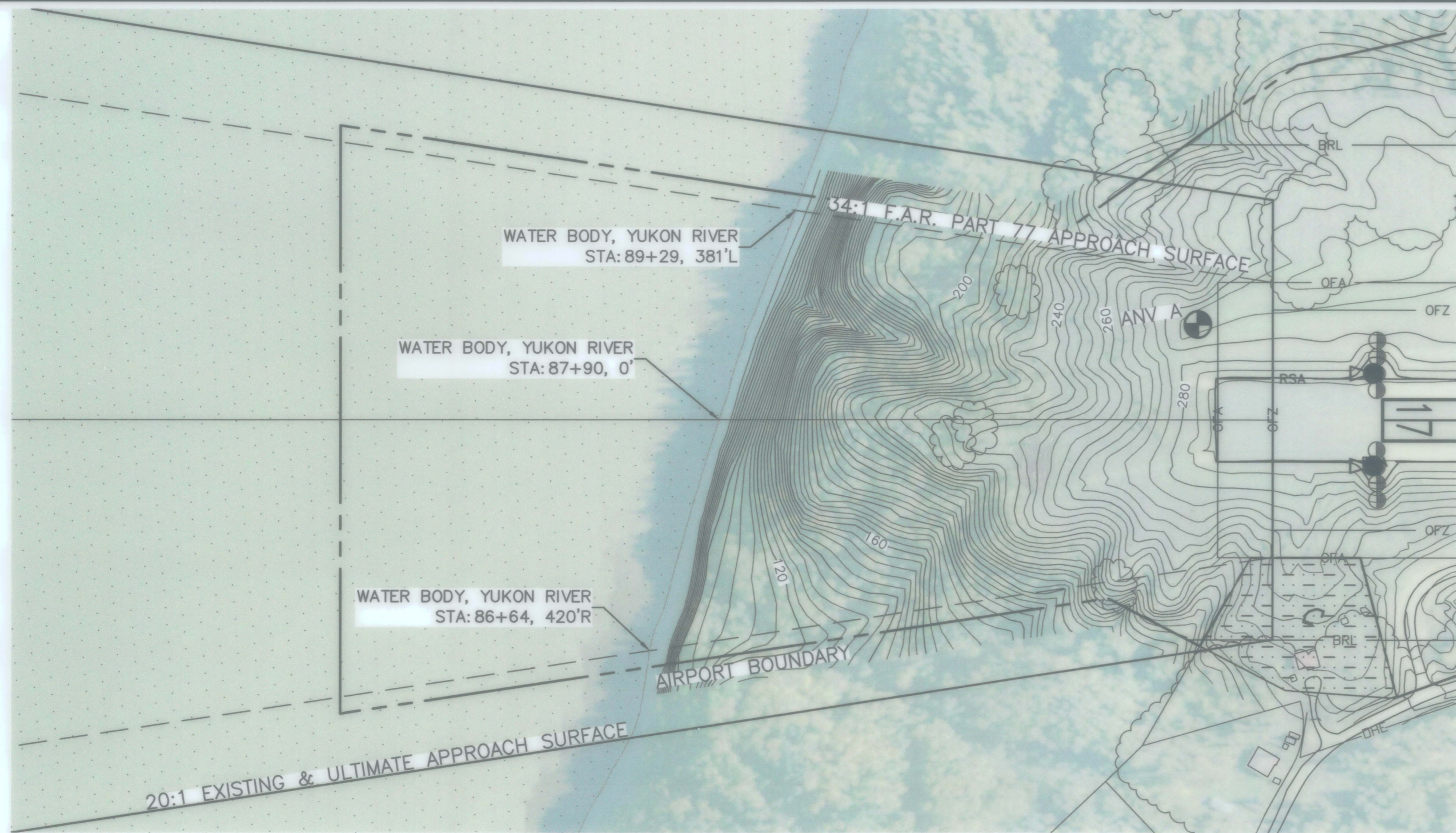
*R&M*  
AIRPORTS DIVISION,  
ALASKAN REGION, AAL-601  
AIRSPACE REVIEW #2002-AAL-232-NRA



**ANVIK AIRPORT**  
**AIRPORT LAYOUT PLAN**  
**TERMINAL PLAN**

SHEET  
**3**  
OF  
**5**

Plotted 10/15/2013 10:23 AM by Matt Majoros Z:\project\1605.04 DOT\_N Aeronautical 2009 Anvik Airport\Civil\ACAD\1605.04-4-Layout-inner-surf.dwg



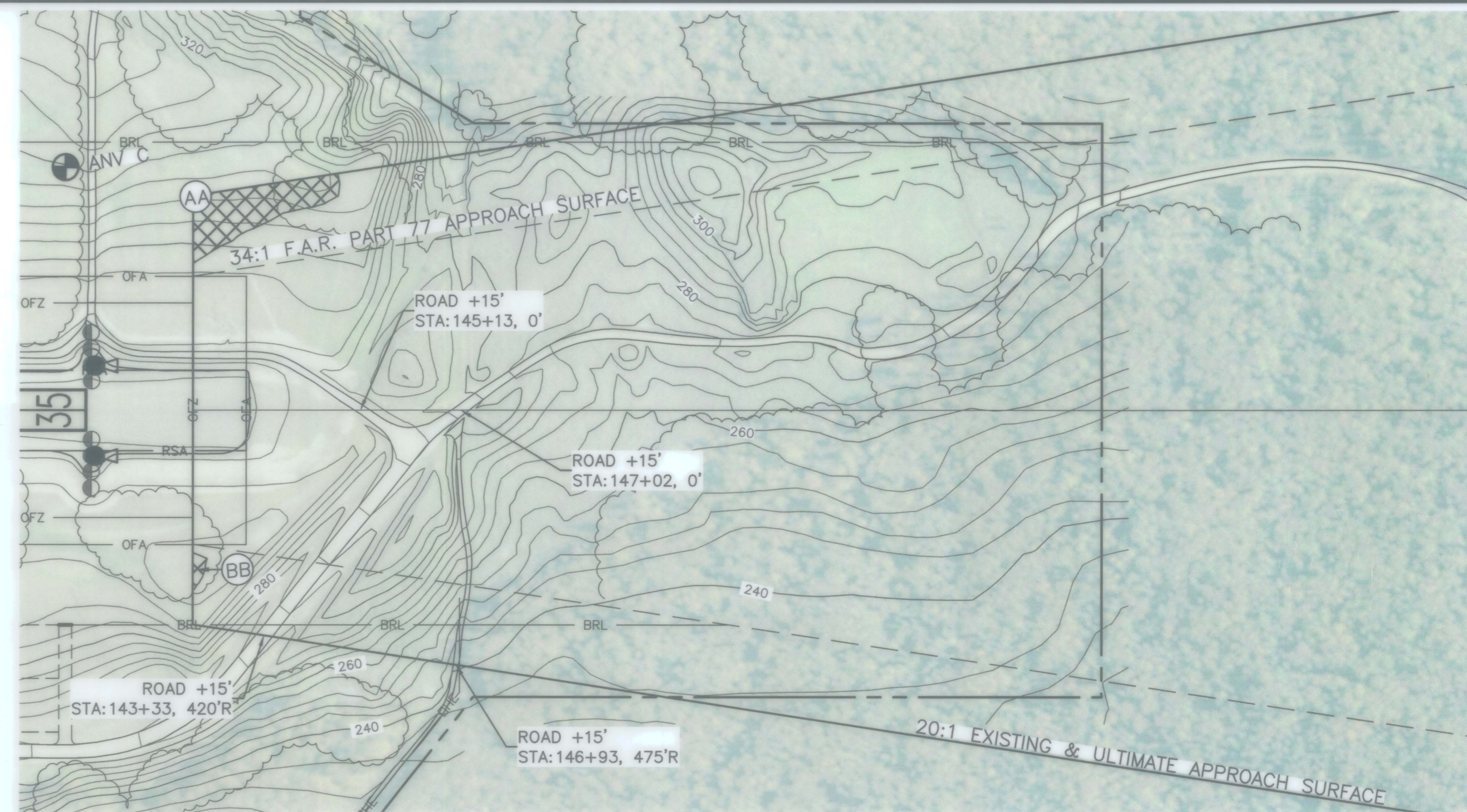
**RUNWAY 17**

**NOTES:**

- EXISTING GROUND COMPOSITE PROFILES ARE BASED ON THE HIGHEST TERRAIN ACROSS THE WIDTH AND ALONG THE LENGTH OF THE APPROACH SURFACES.
- THE HIGHEST THRESHOLD SITING CRITERIA FOR RW 17 AND RW 35 IS FOR INSTRUMENT OPERATIONS (DAY/NIGHT) SERVING GREATER THAN APPROACH CATEGORY B AIRCRAFT WITH VISIBILITY MINIMUMS ≥ 1 STATUTE MILE WITH A 20:1 OBSTRUCTION CLEARANCE SURFACE. REFERENCE FAA AC 150/5300-13A, TABLE 3-2, ROW 5.
- THERE ARE NO THRESHOLD SITING SURFACE OBJECT PENETRATIONS FOR RUNWAY 17.



RUNWAY 17-35  
4000' X 75'  
S06°22'28"W (TRUE)



**RUNWAY 35**

**LEGEND:**

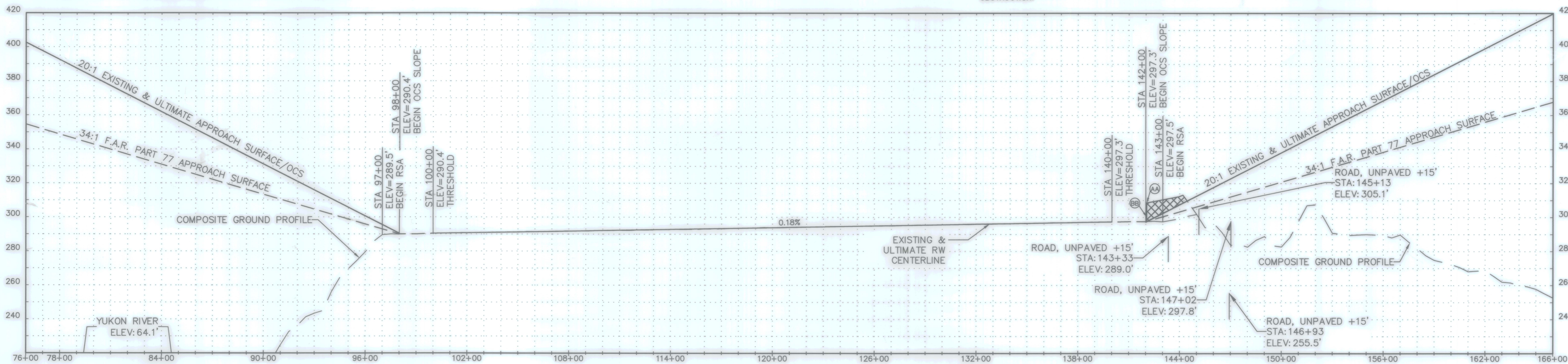
⊗ TERPS OBSTRUCTION

▣ LIMITS OF TERRAIN OBSTRUCTION

**OBSTACLES NOT CLEARING THE RUNWAY 35 APPROACH SURFACE**

NO.	DESCRIPTION	STATION / OFFSET	ELEV. (NAVD 88)	SURFACE PENETRATED	SURFACE ELEV.	AMOUNT PENETRATED	DISPOSITION
AA	TERRAIN & VEGETATION <sup>1</sup>	142+05 / 398' LT	308.6'	APPROACH	297.6'	11.0'	REMOVE
BB	TERRAIN & VEGETATION	142+06 / 297' RT	300.3'	APPROACH	297.6'	2.7'	REMOVE

<sup>1</sup> STATION/OFFSET PROVIDED AT POINT OF MOST AMOUNT PENETRATED. SEE PLAN AND PROFILE FOR EXTENT OF TERRAIN OBSTRUCTION.



DESIGN\_NBS/PRB

DRAWN\_MIM

CHECKED\_EJG

BY	DATE	REVISIONS
NBS	7/3/2013	UPDATED BASED ON AERONAUTICAL SURVEY

STATE OF ALASKA  
DEPARTMENT OF TRANSPORTATION AND PUBLIC FACILITIES  
NORTHERN REGION - DESIGN AND CONSTRUCTION - AVIATION

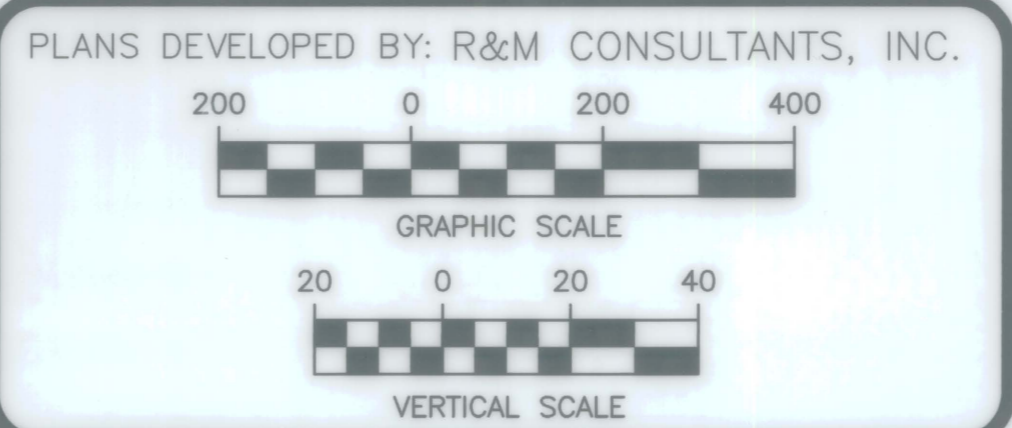
APPROVED  
*Albert M. L. Beck*  
ALBERT M. L. BECK, P.E.

DATE 10.23.13  
AIRPORT DESIGN GROUP CHIEF

AIRPORT LAYOUT PLAN APPROVED  
BY LETTER DATED: 10/31/13

*Robert Olin*

AIRPORTS DIVISION,  
ALASKAN REGION, AAL-601  
AIRSPACE REVIEW #2002-AAL-232-NRA

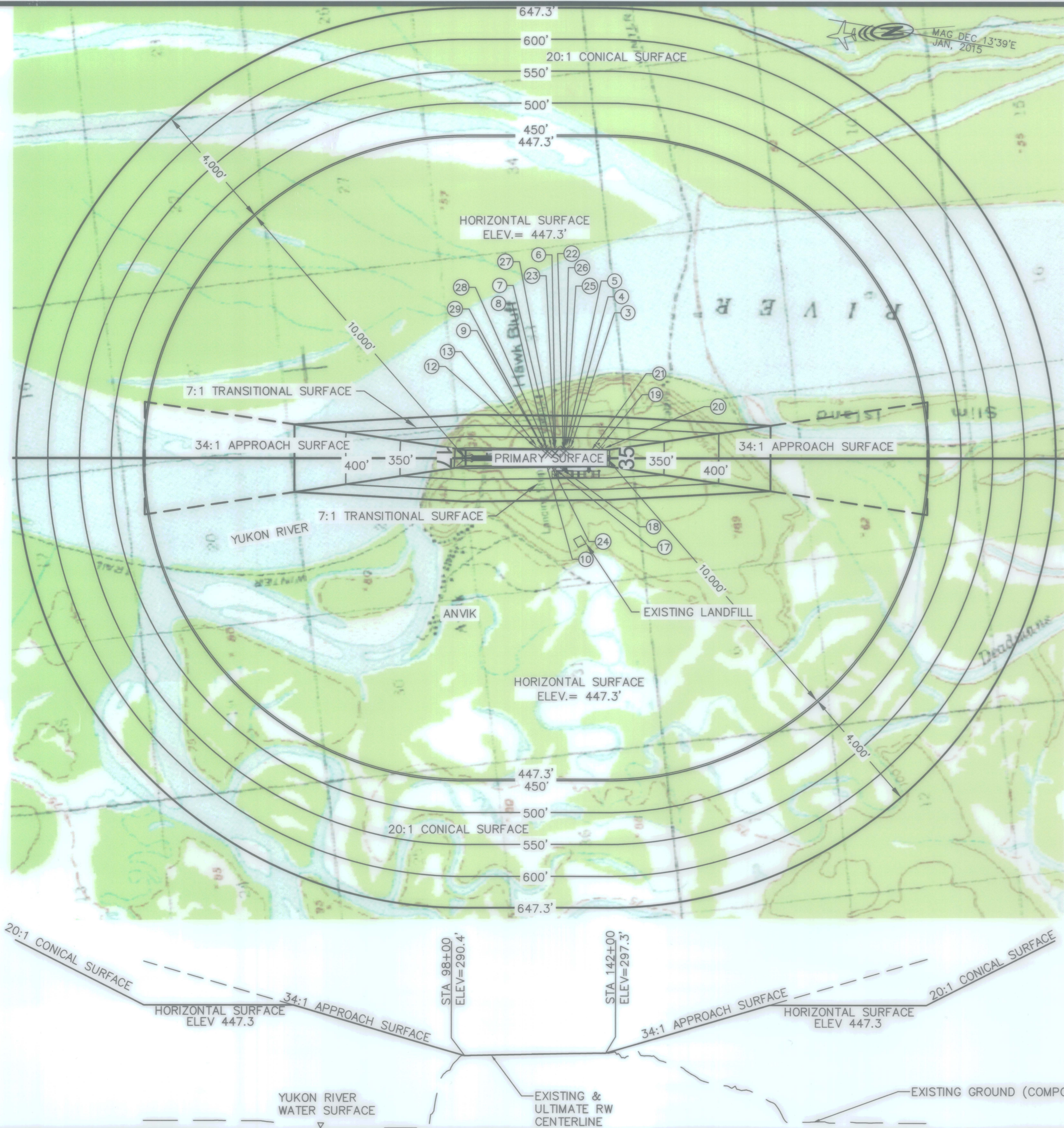


**ANVIK AIRPORT  
AIRPORT LAYOUT PLAN**

INNER PORTION OF THE APPROACH SURFACE

SHEET  
4  
OF  
5

Z:\project\1605.04 DOT\_N Aeronautical 2009 Anvik Airport\Civil\ACAD\1605.04-5-Layout-airspace.dwg  
 Plotted 10/15/2013 10:23 AM by Matt Majoros



**F.A.R. PART 77 SURFACE OBSTRUCTION DATA**

ITEM NO.*	DESCRIPTION	STATION	OFFSET	OBSTRUCTION ELEVATION	SURFACE PENETRATED	SURFACE ELEVATION	AMOUNT PENETRATED	DISPOSITION
3	BUSH	130+75.1	202.4' LT	298.4	PRIMARY	295.7	2.7	TO BE REMOVED
4	TREE	130+25.6	263.7' LT	300.2	TRANSITIONAL	297.5	2.7	TO BE REMOVED
5	BUSH	129+63.6	252.0' LT	298.0	TRANSITIONAL	295.8	2.2	TO BE REMOVED
6	TREE	126+38.3	215.4' LT	300.2	PRIMARY	295.0	5.2	TO BE REMOVED
7	TREE	125+40.6	214.1' LT	299.0	PRIMARY	294.8	4.2	TO BE REMOVED
8	TREE	123+71.1	216.7' LT	301.1	PRIMARY	294.5	6.6	TO BE REMOVED
9	TREE	122+78.6	260.2' LT	298.1	TRANSITIONAL	295.7	2.4	TO BE REMOVED
10	TREE	122+42.6	209.0' LT	301.7	PRIMARY	294.2	7.5	TO BE REMOVED
12	TREE	120+91.7	239.3' LT	298.3	PRIMARY	294.0	4.3	TO BE REMOVED
13	TREE	121+08.3	262.0' LT	298.8	TRANSITIONAL	295.8	3.0	TO BE REMOVED
17	TREE	124+37.6	250.3' RT	298.6	TRANSITIONAL	294.8	3.8	TO BE REMOVED
18	BUSH	126+43.0	242.6' RT	297.1	PRIMARY	295.0	2.1	TO BE REMOVED
19	ROAD +15'	140+71.5	359.8' LT	324.4	TRANSITIONAL	313.0	11.4	TO REMAIN
20	ROAD +15'	140+39.4	162.0' LT	305.7	PRIMARY	297.4	8.3	TO REMAIN
21	ROAD +15'	140+26.9	148.7' LT	305.7	PRIMARY	297.3	8.4	TO REMAIN
22	ROAD +15'	140+10.7	260.0' LT	312.5	TRANSITIONAL	298.8	13.7	TO REMAIN
23	ROAD +15'	136+42.2	107.8' LT	303.9	PRIMARY	296.8	7.1	TO REMAIN
24	ROAD +15'	131+94.2	140.7' LT	306.6	PRIMARY	295.9	10.7	TO REMAIN
25	ROAD +15'	129+06.6	239.6' LT	307.2	PRIMARY	295.4	11.8	TO REMAIN
26	ROAD +15'	128+74.4	151.2' LT	307.2	PRIMARY	295.4	11.8	TO REMAIN
27	ROAD +15'	126+06.3	148.0' LT	307.3	PRIMARY	294.9	12.3	TO REMAIN
28	ROAD +15'	124+07.6	146.6' LT	307.1	PRIMARY	294.5	12.6	TO REMAIN
29	ROAD +15'	123+08.1	145.0' LT	306.9	PRIMARY	294.4	12.5	TO REMAIN

\*ITEM NO. 1, 2, 11, 14-16 NOT SHOWN ON THIS SHEET. SEE LAYOUT PLAN, SHEET 2.

**LEGEND**

Ⓜ F.A.R. PART 77 OBSTRUCTION

**NOTES**

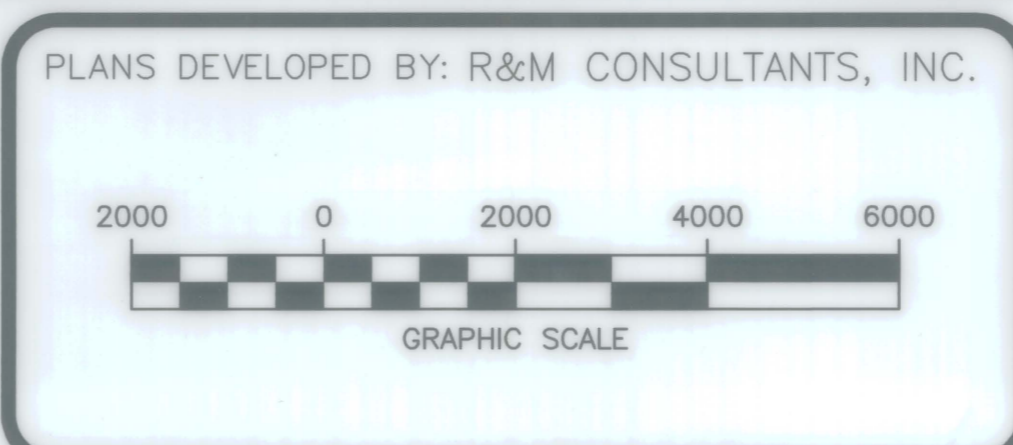
- AIRPORT ELEVATION = 297.3'.
- THE COMPOSITE PROFILE REPRESENTS THE HIGHEST TERRAIN ACROSS THE WIDTH AND ALONG THE LENGTH OF THE F.A.R. PART 77 APPROACH SURFACE.
- THE PRIMARY SURFACE WIDTH IS 500'.

DESIGN_NBS/PRB	BY	DATE	REVISIONS
DRAWN_MIM	NBS	7/3/2013	UPDATED BASED ON AERONAUTICAL SURVEY
CHECKED_EJG			

STATE OF ALASKA  
 DEPARTMENT OF TRANSPORTATION AND PUBLIC FACILITIES  
 NORTHERN REGION - DESIGN AND CONSTRUCTION - AVIATION

APPROVED  
  
 ALBERT M. L. BECK, P.E. DATE 10-23-13  
 AIRPORT DESIGN GROUP CHIEF

AIRPORT LAYOUT PLAN APPROVED  
 BY LETTER DATED: 10/31/13  
  
 AIRPORTS DIVISION,  
 ALASKAN REGION, AAL-601  
 AIRSPACE REVIEW #2002-AAL-232-NRA



**ANVIK AIRPORT**  
**AIRPORT LAYOUT PLAN**  
 AIRPORT AIRSPACE PLAN AND PROFILE

SHEET  
 5 OF 5