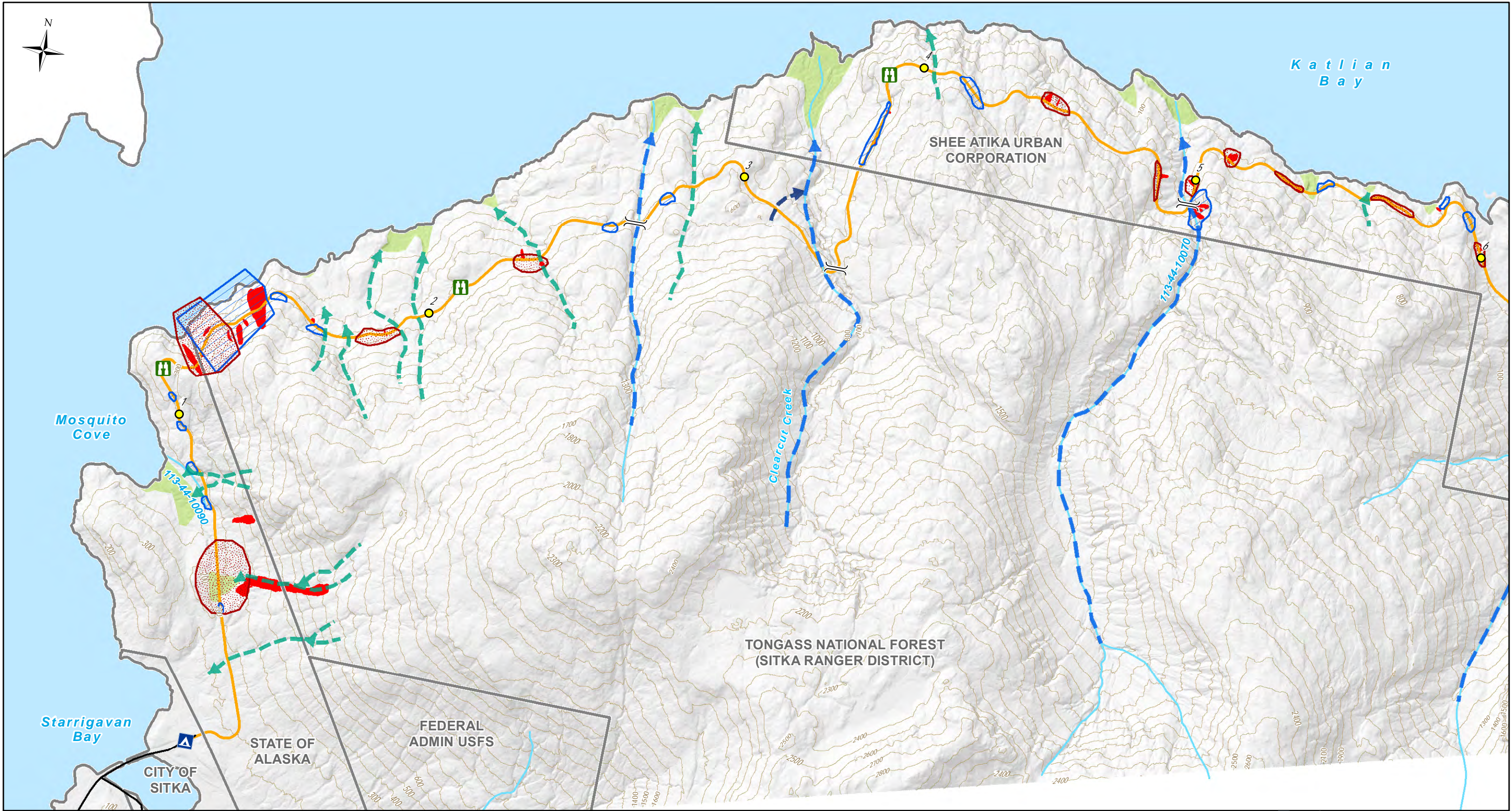


Appendix I: Geology and Soils

This page is intentionally left blank.



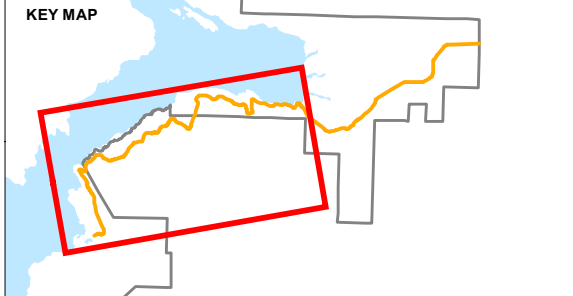
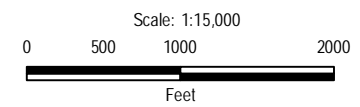
**KATLIAN BAY
ROAD
CONSTRUCTION
GEO-HAZARDS**

- Starrigavan Campsite
- Public Road
- Stream
- Contour (100 ft)
- Land Status

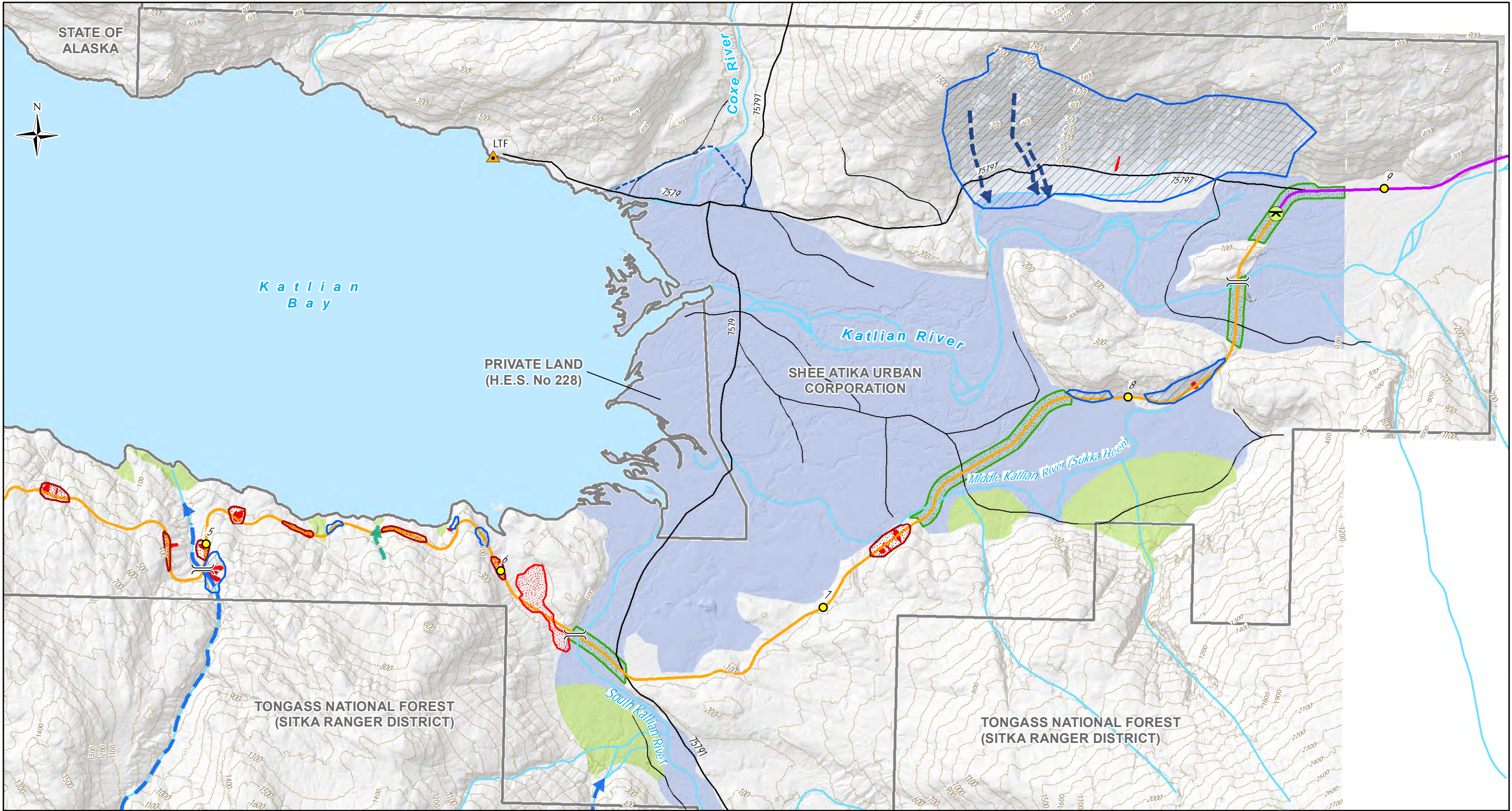
- Proposed Day Use Area
- Proposed Viewpoint
- Proposed Bridges
- Mile Mark
- Proposed Alignment

- Geo-hazards**
- Unstable soil slope
 - Unstable rock slope
 - Rock-Landslide/Debris Flow
- Surficial Geology**
- Alluvial Fan

- Debris Torrent**
- Active
 - High
 - Low



DRAWN BY: WR CHECKED BY: PG



KATLIAN BAY ROAD CONSTRUCTION GEO-HAZARDS

— Historic USFS Road
 — Stream
 — Contour (100 ft)
 □ Land Status

● Proposed Day Use Area
 } Proposed Bridges
 ● Mile Mark
 ▲ Existing Historic LTF
 — Proposed Alignment
 — OHV Trail
 - - - Proposed New Access Road Segment

Geo-hazards

- Seismic (Liquefaction)
- Soft Soil
- Unstable soil slope
- Unstable rock slope
- Rock-Landslide/Debris Flow

Surficial Geology

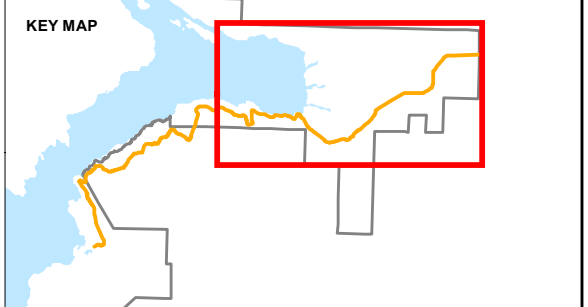
- Alluvial Fan
- Alluvial Plain

Debris Torrent

- Active
- High
- Low

Scale: 1:15,000

0 500 1000 2000 Feet



DRAWN BY: WR CHECKED BY: PG