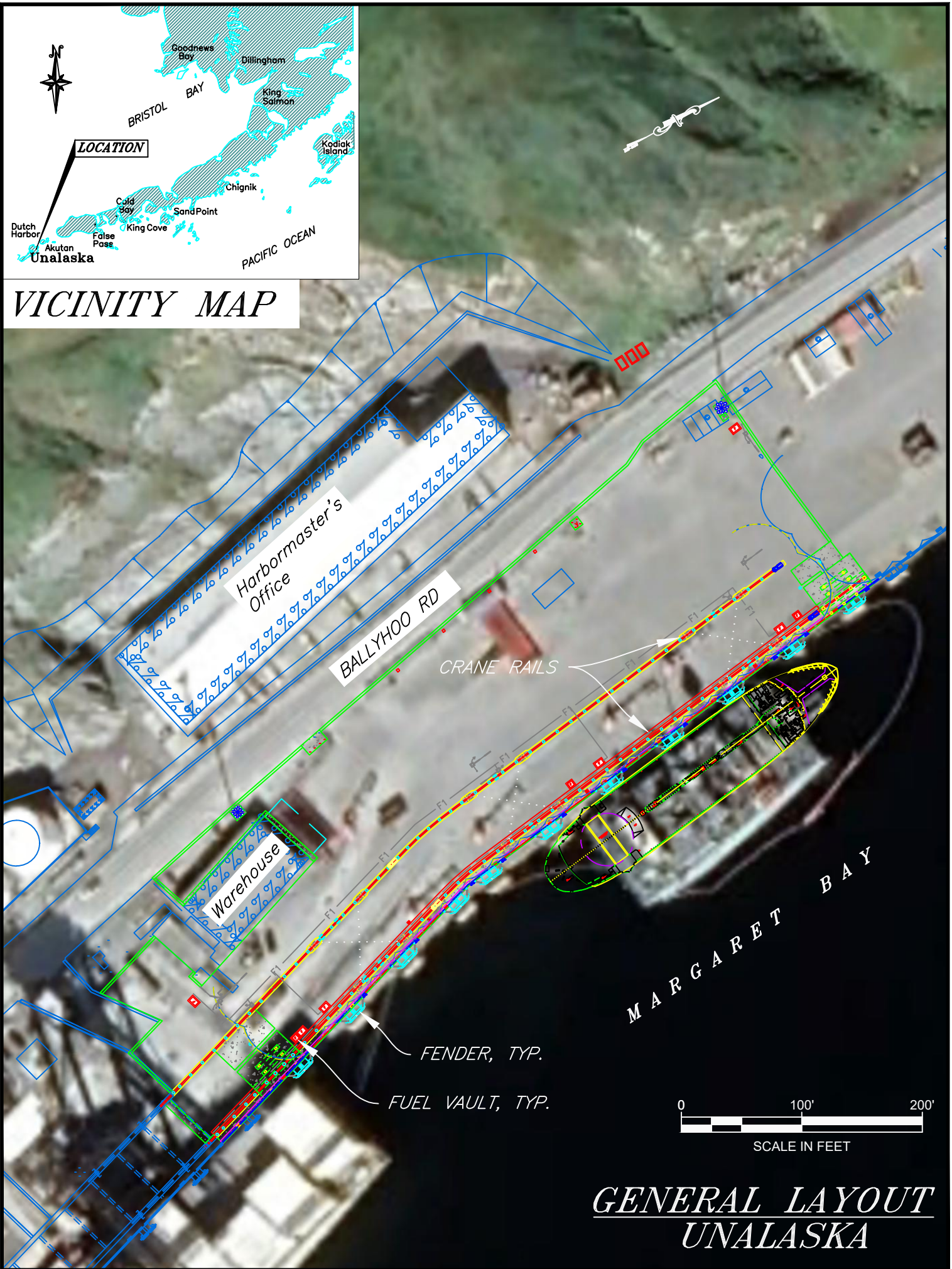


VICINITY MAP



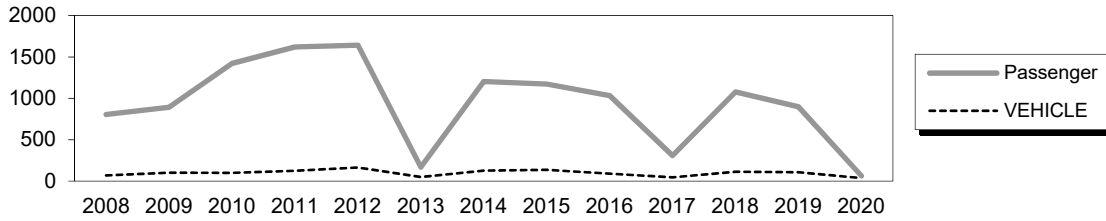
*GENERAL LAYOUT
UNALASKA*

Unalaska/Dutch Harbor Dock

Owner: City of Unalaska
Contact: Trevor Schliebe, Harbormaster, City of Unalaska 907-581-1254

Terminal Description: The M/V Tustumena's last stop on its westward route is at Dutch Harbor where it serves the City of Unalaska. The ferry berth once occupied portions of two City owned docks; the entire face of a timber dock and a portion of an adjoining concrete platform dock. Recently the timber dock was torn out and replaced with a continuous sheet-pile cell, earth filled wharf. The City of Unalaska designates these dock areas as Positions 3 and Position 4 respectively.

This is a multi-purpose facility utilized by other vessels. AMHS is not in control of operation or maintenance. The past 12 years of total passenger and vehicle traffic is shown below. The M/V Tustumena was out of service most of 2013 & 2017, causing steep drop-offs in traffic at the terminal. The global pandemic caused the decline in 2020.



The most recent above water survey was completed on September 23, 2018.

Tidal Data	
Highest Observed	6.70
MHHW	3.60
MHW	3.32
MLLW	0.00
Lowest Observed	-2.78

Uplands	
Short-Term Parking:	N/A
Long-Term Parking:	N/A
Staging Area:	N/A

Terminal Building
This facility does not have a terminal building.

City Dock	
Year Built:	2018
Construction:	Steel sheet pile bulkhead
Fenders:	(11) Heavy-duty steel pin-pile fenders
Mooring bollards/cleats:	Bollards & Cleats mounted along dock edge
Lighting:	High mast lights
Condition:	New
Design Load:	750 psf surcharge / HL93/ CAT 988 Loader

Generator & Building
This facility does not have a generator on-site.

Utilities @ Dock	
Water:	Yes
Fuel:	Yes
Sewer:	Yes

Terminal Projects			
Year	Project #	Project Name	Description
2018	111135	City of Unalaska UMC Dock Position III & IV/Replacement	Constructed new sheet pile bulkhead dock, with heavy-duty berthing fenders

GENERAL FACILITY EVALUATION

Facility Component	Rating
Uplands	8
Sheet pile Dock	8
Fendering System	8

9	EXCELLENT CONDITION
8	VERY GOOD CONDITION - no problems noted
7	GOOD CONDITION - some minor problems.
6	SATISFACTORY CONDITION - structural elements show minor deterioration
5	FAIR CONDITION - all primary structural elements are sound but may have minor corrosion, cracking or chipping. May include minor erosion on bridge piers.
4	POOR CONDITION - advanced corrosion, deterioration, cracking or chipping. Also significant erosion of concrete bridge piers.
3	SERIOUS CONDITION - corrosion, deterioration, cracking and chipping, or erosion of concrete bridge piers have seriously affected deck, superstructure, or substructure. Local failures are possible.
2	CRITICAL CONDITION - advanced deterioration of deck, superstructure, or substructure. May have cracks in steel or concrete, or erosion may have removed substructure support. It may be necessary to close the bridge until corrective action is taken.
1	"IMMINENT" FAILURE CONDITION - major deterioration or corrosion in deck, superstructure, or substructure, or obvious vertical or horizontal movement affecting structure stability. Bridge is closed to traffic but corrective action may put back in light service.
0	FAILED CONDITION - out of service - beyond corrective action
N	Not applicable

For a copy of the latest facility inspection reports contact the AK DOT&PF Marine Design Department. Contact information is located in the Comments and Feedback section.