

3' DIAMETER X 3' DEEP STEEL VAULT SPRAYED WITH URETHANE FOAM AND POLYSHIELD COATING

SCREENED CAP ABOVE GROUND

GROUND SURFACE, SLOPED AWAY FROM WELL

ABANDONED (2006) 1" GALVANIZED WATER PIPE - CAPPED

URETHANE FOAM SPRAYED TO SEAL DUCT TERMINATION AT CASING W/ POLYSHIELD OUTER COATING

1/4" ARMOR SHIELDED POWER CABLE FROM WATER DISTRIBUTION POINT TO J-BOX @ VAULT

NEW WATER PIPE IN ARCTIC PIPE UTILIDUCT (SEE NOTE 3)

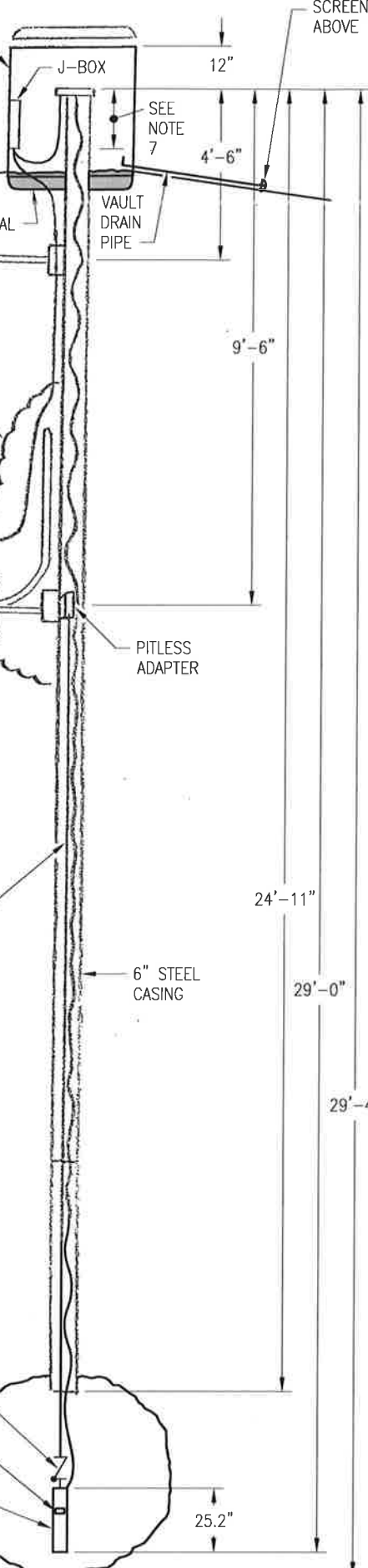
1" X ~12' GALVANIZED PIPE FROM PITLESS ADAPTER TO PUMP

1" CHECK VALVE

PUMP INLET

1/2 H.P. X 6.5 GPM GOULDS SUBMERSIBLE PUMP

RECHARGE "VOID" ZONE BELOW WELL CASING



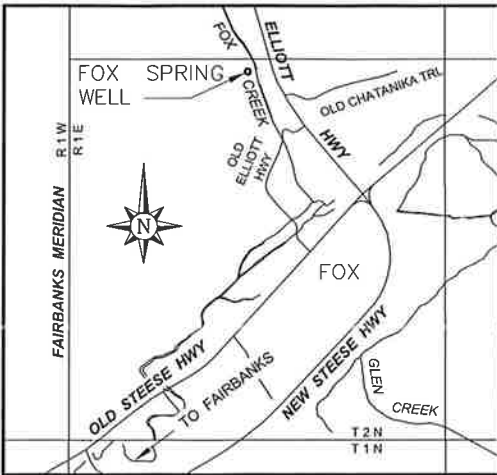
NOTES:

1. BENTONITE SEAL PLACED AT BASE OF VAULT (2007).
2. VAULT LID SECURED WITH KEYED DOUBLE LOCKS.
3. WATER LINE FROM WELL TO DISTRIBUTION POINT WAS REPLACED IN DEC. 2006 WITH ARCTIC PIPE UTILIDUCT CONSISTING OF 13" OD HDPE OUTER CASING WITH 6" OD HDPE PIPE DUCT INSIDE, AND ANNULAR SPACE FILLED WITH URETHANE FOAM. LINES INSIDE THE PIPE DUCT FROM WELL TO ALUMINUM TANK AT DISTRIBUTION POINT ARE: 1" AQUAPEX TUBING WATERLINE, 2 EA 5/8" HEATPEX TUBING FOR GLYCOL HEAT TRACE LOOP, & 5 WATT ELECTRICAL HEAT TRACE.
4. WATER LINE INCLUDING UTILIDUCT WAS SHORTENED TO 200' IN OCT. 2007 IN CONJUNCTION WITH DISTRIBUTION POINT RELOCATION.
5. BOTTOM OF PITLESS ADAPTER AT 9'-10" BELOW TOP OF CASING.
6. VAULT DRAIN IS APPROX. 8' LENGTH WITH IN-LINE SWING CHECK VALVE.
7. TOP OF WELL CASING EXTENDED 18" IN OCT. 2007.
8. PUMP INLET AT DEPTH OF 28'-2 1/2".

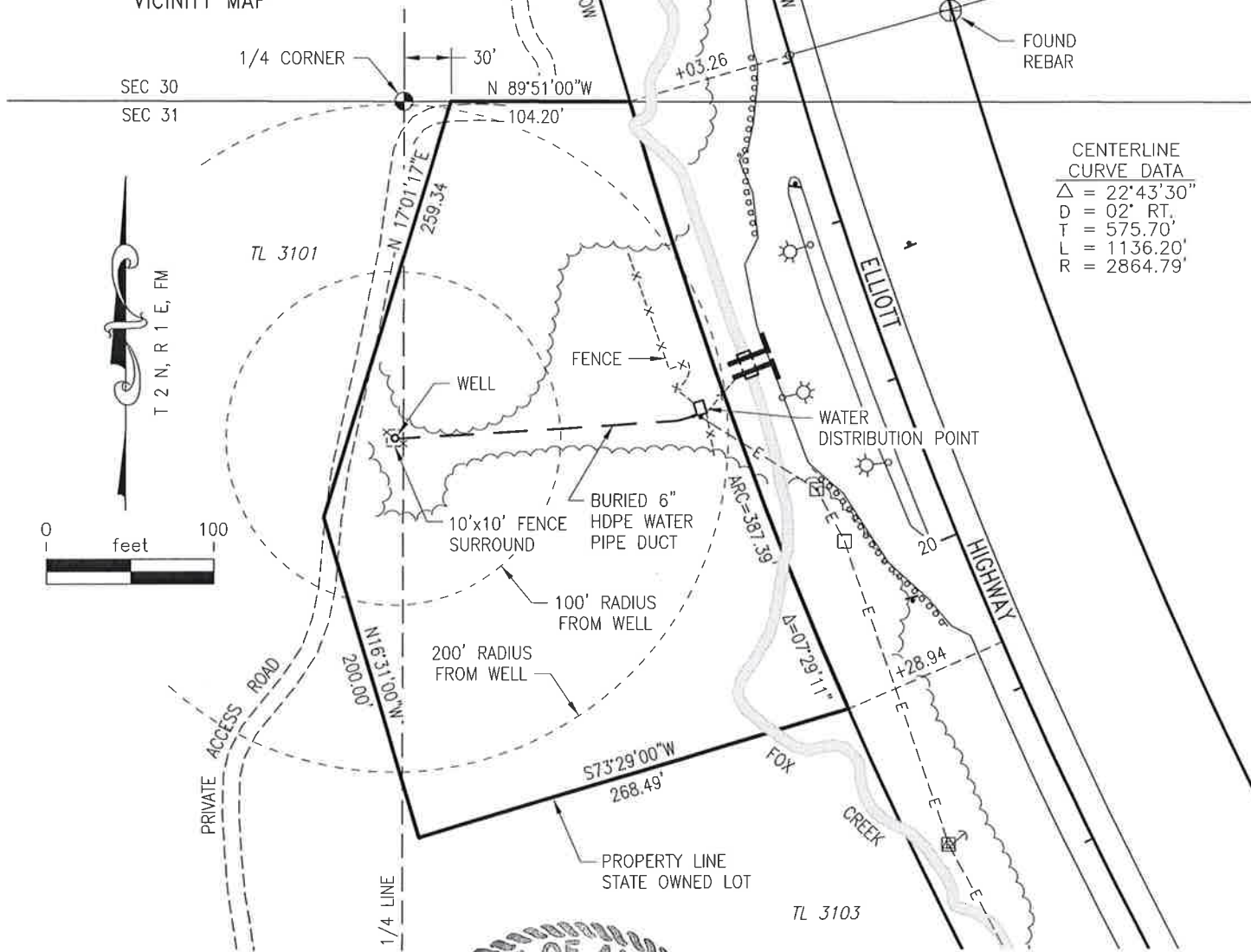


DRAWING NOT TO SCALE

STATE OF ALASKA Department of Transportation and Public Facilities Maintenance & Operations Northern Region		
FOX WELL REVISED AS-BUILT		
SKETCH - SHOWING BASIC COMPONENTS IN PROFILE VIEW		
FOX, ALASKA		
DATE: NOV 2013	DRAWN: SLC	SHEET 3 of 3

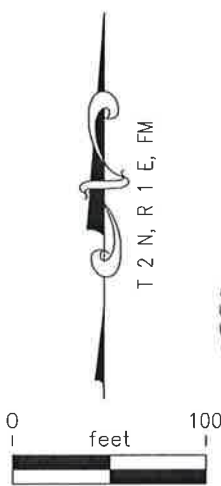


VICINITY MAP



CENTERLINE CURVE DATA

Δ	= 22°43'30"
D	= 02' RT,
T	= 575.70'
L	= 1136.20'
R	= 2864.79'



- NOTE:
1. ALL HIGHWAY INFORMATION IS FROM AS BUILT PLANS: ALASKA PROJECT NO. SPO680(12) 1964.
 2. ALL PARCEL RECORD INFORMATION IS FROM AK DOT&PF RIGHT OF WAY PARCEL PLAT, 6/23/88.



STATE OF ALASKA Department of Transportation and Public Facilities Maintenance & Operations Northern Region		
FOX SPRING - WELL		
PARCEL PLAN DEPICTION		
FOX, ALASKA		
DATE: DEC 2009	DRAWN: SLC	SHEET 1 of 3

INDICATES PAVEMENT

EOP

ELLIOTT HIGHWAY

NON-PAVED MEDIAN

STREETLIGHT
(TYPICAL)

FOX SPRING
TURNOUT

96" DIA. CULVERT

JERSEY BARRIERS

OVERHEAD ELECTRIC
POWER LINE

FOX

CREEK

ROW

WATER
DISTRIBUTION POINT

FENCE

WATER METER BOX

TREES AND BRUSH

BURIED 6" HDPE WATER
PIPE DUCT. SEE NOTE 3,
SHEET 3 OF 3 FOR
DETAILED DESCRIPTION

WATER PIPE DUCT -
ABOVE GROUND W/ EXTERNAL
INSULATION OF URETHANE FOAM
W/ POLYSHIELD OUTER COATING

T 2 N, R 1 E, FM



STATE OF ALASKA
Department of Transportation and Public Facilities
Maintenance & Operations
Northern Region

FOX SPRING - WELL

DETAIL PLAN

FOX, ALASKA

DATE: DEC 2009

DRAWN: SLC

SHEET 2 of 3